



MT. DIABLO UNIFIED SCHOOL DISTRICT

ATI ARCHITECTS + ENGINEERS

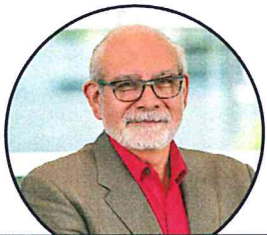
April 19, 2019



MEET YOUR TEAM



THE PEOPLE BEHIND THE SCENES



Mark Bello, AIA
Principal-in-Charge



Anna Win, AIA, LEED AP
Principal, Sr. Project Manager



May Mohamed, R.A.
Architect



Vinson Lao, R.A.
Architect

NOTES:

KEY HIGHLIGHTS



REGIONAL CLIENT LIST

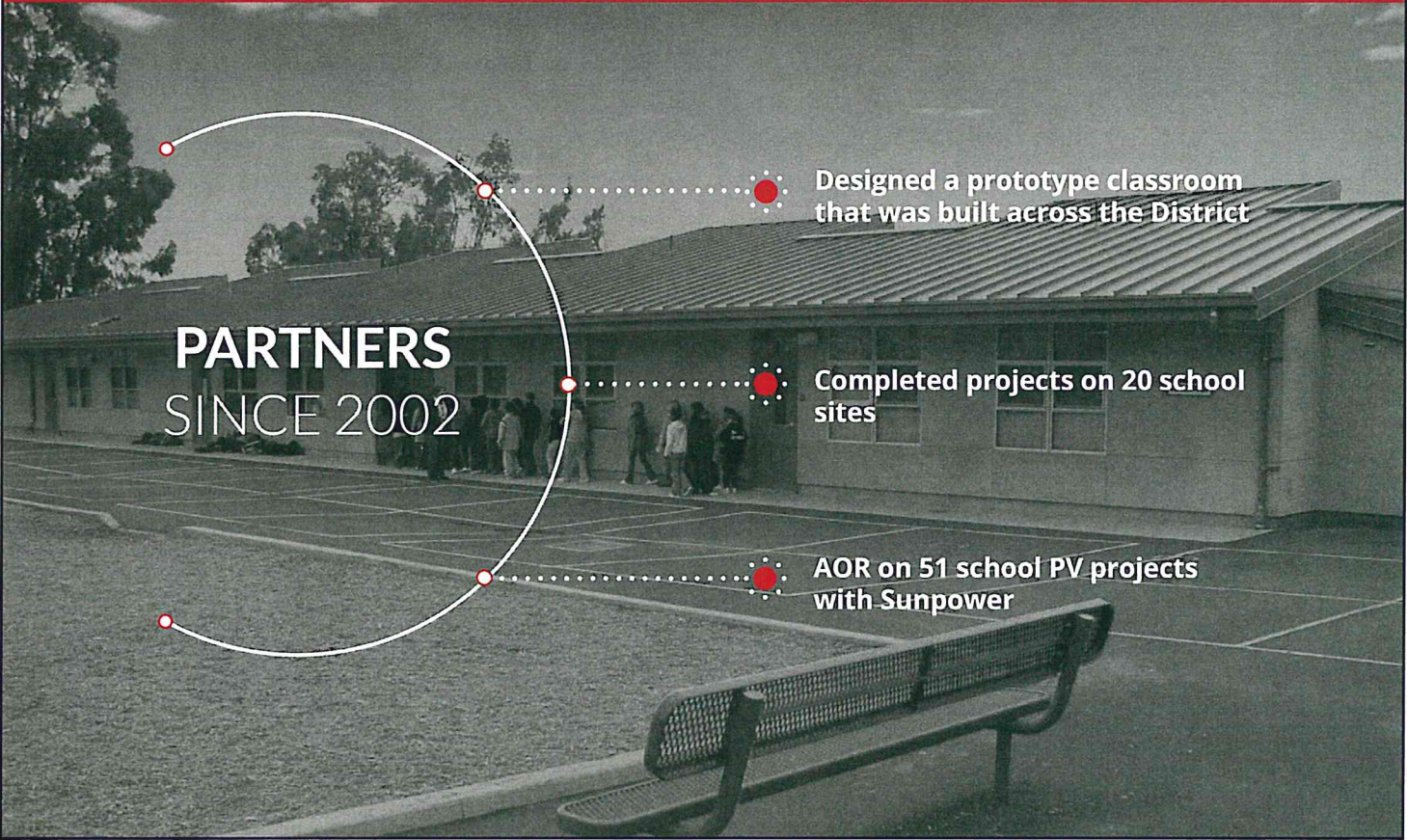
San Ramon Valley USD
Antioch USD
Piedmont USD
Sonoma County Office of Education

Acalanes UHSD
Fairfield-Suisun USD
Pittsburg USD
Cloverdale USD

Walnut Creek SD
Napa Valley USD
Dublin USD
...and many others

NOTES:

MT. DIABLO EXPERIENCE



PARTNERS
SINCE 2002

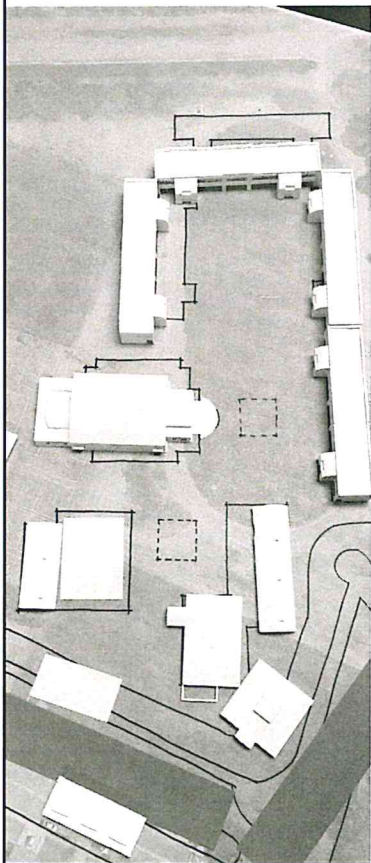
Designed a prototype classroom that was built across the District

Completed projects on 20 school sites

AOR on 51 school PV projects with Sunpower

NOTES:

COLLABORATION



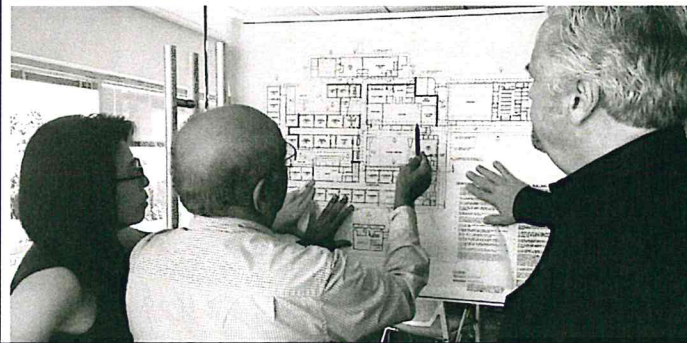
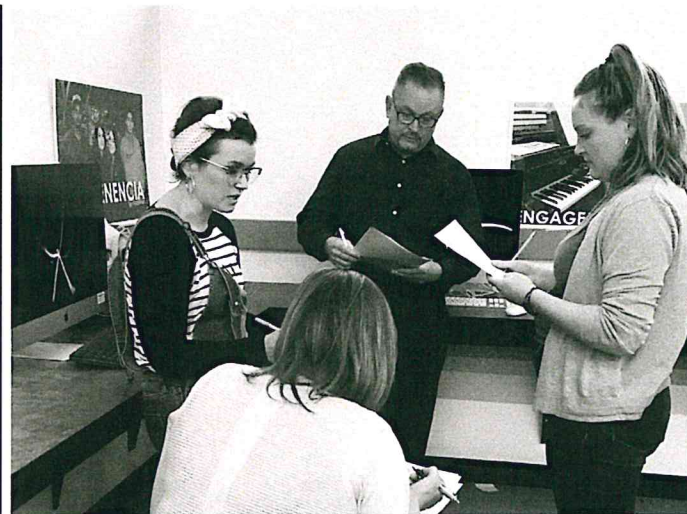
LISTEN



LEARN



SHARE
IDEAS



NOTES:

SETTING EXPECTATIONS

NEEDS ASSESSMENT



PRIORITIZE



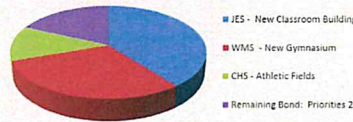
DEFINE SCOPE



PRIORITY RANKING FOR MEASURE H BOND PROJECTS CLOVERDALE HIGH

RANK	ITEMS	PRIORITY V						
		#1	#2	#3	#4	#5	#6	#7
1	Athletic Field Improvements	11	3	0	0	2	3	0
1	Deferred Maintenance	1	1	4	1	1	1	2
2	West Gym Renovation	0	2	5	1	4	2	2
5	East Gym Renovation	0	0	2	5	5	4	1
8	Facility Improvements	0	2	1	5	1	2	1
14	Front Office - Remodel	0	0	0	1	1	0	1
6	Relocate Bus/Maint. Barn	0	7	1	1	1	0	0
11	Traffic Calming Devices	1	1	0	1	2	1	1
7	Improve Outdoor Facilities	2	2	1	3	1	1	3
14	Dust Collector for Woodshop	0	0	1	2	0	0	0
10	Update all Existing Restrooms	1	0	1	2	1	1	0
4	New Campus Security System	1	4	4	0	2	0	0
12	Additional Staff Restrooms	0	2	0	0	0	0	0
9	HVAC Upgrades	2	0	2	1	2		

Scope / Budget Breakdown



Cloverdale Unified School District

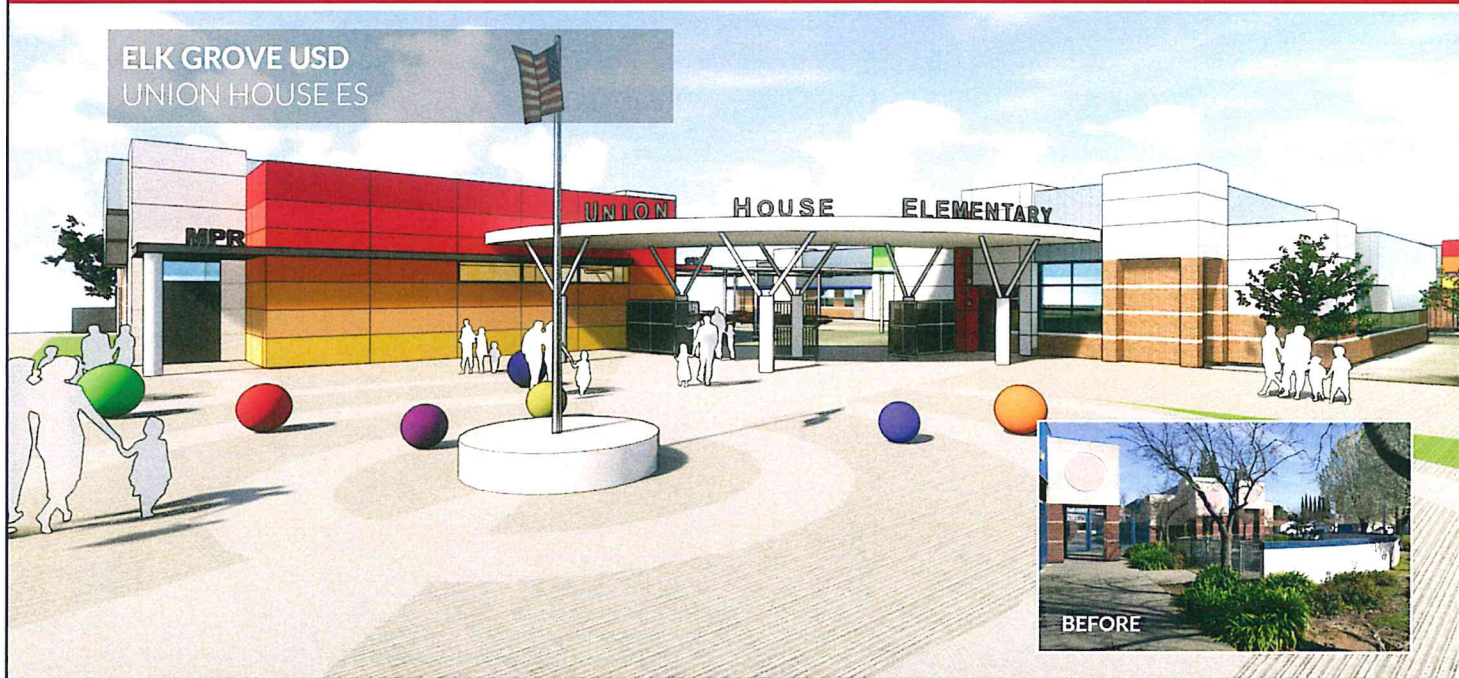


Jefferson Elementary School Aerial View / Prioritization List



NOTES:

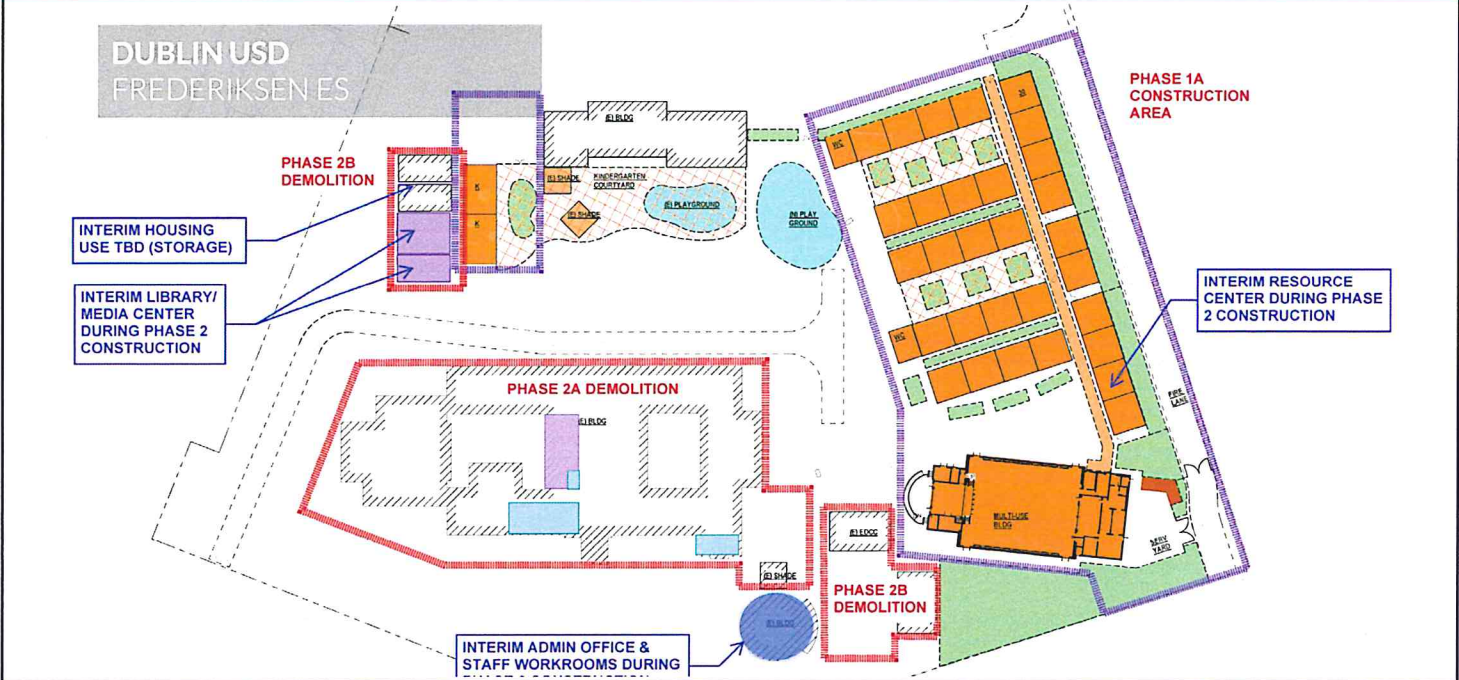
COMMUNITY ENGAGEMENT



- Collaborated with Large Constituents Group
- Front Entry Plaza & Circulation Improvements
- Modernization of the MPR, Kitchen, & Library
- Technology Upgrades

NOTES:

SOLUTION DRIVEN APPROACH



- Collaborated with Key Constituents
- Evaluated Cost Effectiveness of Modernization vs New Construction
- Reconfigure Campus Circulation
- Controlled Entry Point

NOTES:

DEEP MODERNIZATION



- Modernization & New Construction
- Technology & Infrastructure Replacements
- Safety & Security System Upgrades
- Building Performance/Energy Savings

NOTES:

INFRASTRUCTURE IMPROVEMENTS

FREMONT USD IT INFRASTRUCTURE ON 7 SCHOOL SITES



FIRE ALARM SYSTEM
UPGRADES
& DATA POINT
CONNECTIONS



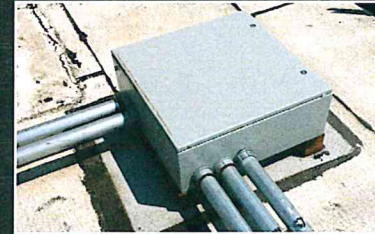
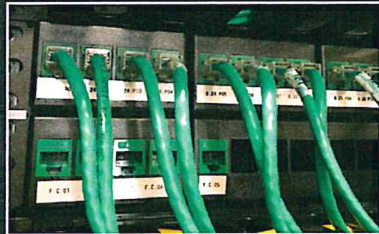
REPLACED
AGING NETWORK
INFRASTRUCTURES
& EQUIPMENT



DESIGNED NETWORK
ELECTRONICS FOR PoE
(POWER-OVER-ETHERNET)



UPGRADED POWER
& HVAC SYSTEMS
TO SUPPORT
ADDITIONAL LOADS



NOTES:

21ST CENTURY LEARNING



SAN JUAN USD
WINSTON CHURCHILL MS



- Collaborated with 16 Key Constituents
- Won Competition to Develop Pilot 21st Century Classroom Additions
- Wireless with No Front of Classroom
- Flexible Indoor/Outdoor Learning Spaces

NOTES:

NEXT GEN ENVIRONMENT



- 21st Century Technology
- New Building Construction

- Classrooms & Collaborative Spaces
- Next Gen Learning Environment

NOTES:

SAFE CAMPUSES



- Extensive Community Outreach & Involvement
- Hardship Funding

- STEAM Education
- Controlled Entry Points

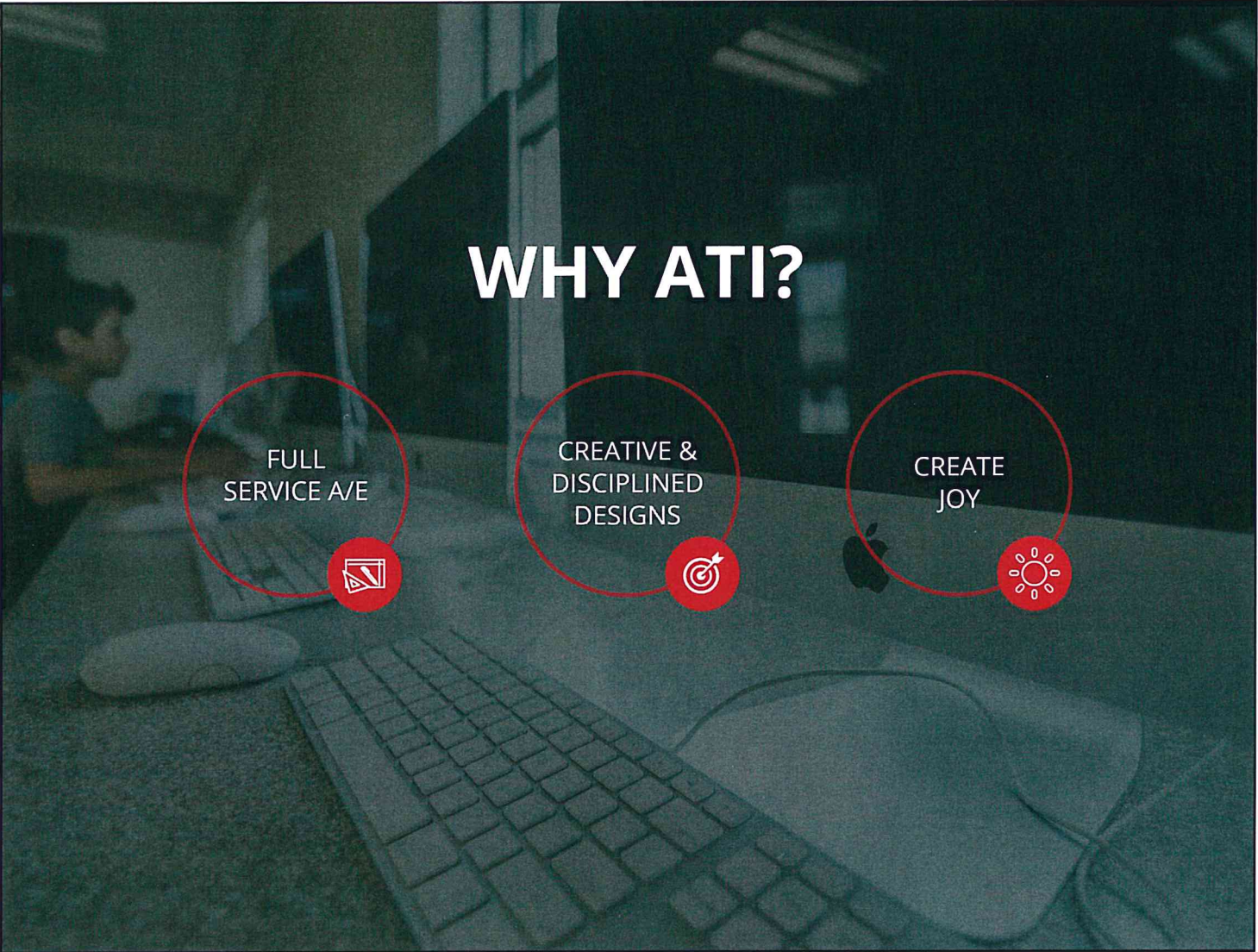
NOTES:

CTE PROGRAM

NAPA VALLEY USD
VINTAGE HS FARM
CULINARY ARTS AND AGRICULTURAL SCIENCES
CTE PROGRAMS



NOTES:



WHY ATI?

FULL
SERVICE A/E



CREATIVE &
DISCIPLINED
DESIGNS



CREATE
JOY



NOTES:

An aerial photograph of a modern school campus at dusk. The buildings are illuminated with warm lights, and the sky is a deep twilight blue. In the background, rolling mountains are visible under the darkening sky. The foreground shows a well-maintained lawn with several young trees and a paved walkway.

THANK YOU

MT. DIABLO USD

www.atiae.com