



COOPERATIVE STRATEGIES

COMPLETE FINANCIAL & DEMOGRAPHIC PLANNING FOR EDUCATION

MT. DIABLO UNIFIED SCHOOL DISTRICT

TRUSTEE AREA PROCESS

JUNE 24, 2019



TRUSTEE AREA PROCESS

Date	Activity
May 13, 2019	Board Meeting: School District Initiates Process to Transition to By-District Elections
June 10, 2019	Board Meeting: First Pre-Map Public Hearing and Presentation
June 24, 2019	Board Meeting: Second Pre-Map Public Hearing Public Hearing on General Waiver Request Board Consideration of General Waiver Request
August 21, 22, & 29, 2019	Community input meetings at various sites across the School District to review preliminary scenarios and receive public input on maps
September 23, 2019	Board Meeting: First Public Hearing on Trustee Area Scenarios Board Consideration of General Waiver Request (if necessary)
October 14, 2019	Board Meeting: Final Public Hearing on Trustee Area Scenarios Board Section of Trustee Area Map Board Consideration of Change in Election Method
November 2019	County Committee on School District Organization Holds a Public Hearing and Considers Approval of Change in Election Method and Trustee Area Map
By November 2019	State Board of Education Meeting; Waiver Application Consideration
November 2019	Cooperative Strategies sends Final Trustee area Map to the County Registrar of Voters
November 2020	First Election Held Utilizing Trustee Areas



COMMUNITY INPUT MEETINGS

- Review draft trustee area maps
- Provide feedback on maps
- Provide suggestions on changes or new scenarios
- Get answers to questions
- Open house format

Date	12:00 p.m. to 1:00 p.m.	5:00 p.m. to 6:00 p.m.	6:30 p.m. to 7:30 p.m.
Wednesday, August 21st	Loma Vista Adult Center 1266 San Carlos Avenue Concord	Willow Creek Center Multi-Use Room 1026 Mohr Lane Concord	Pleasant Hill Middle School Community Room 1 Santa Barbara Road Pleasant Hill
Thursday, August 22nd		Pine Hollow Middle School Library 5522 Pine Hollow Road Concord	Foothill Middle School Library 2775 Cedro Lane Walnut Creek
Thursday, August 29th		District Office Board Room 1936 Carlotta Drive Concord	Riverview Middle School Library 205 Pacifica Avenue Bay Point



CONSIDERATIONS IN TRUSTEE AREAS



Each area shall contain nearly equal number of inhabitants



Follow man-made and natural geographic features, as much as possible



Drawn to comply with the Federal Voting Rights Act



Respect incumbency, if possible



Compact and contiguous, as much as possible



Other local considerations (i.e., school boundaries, locations of school sites)

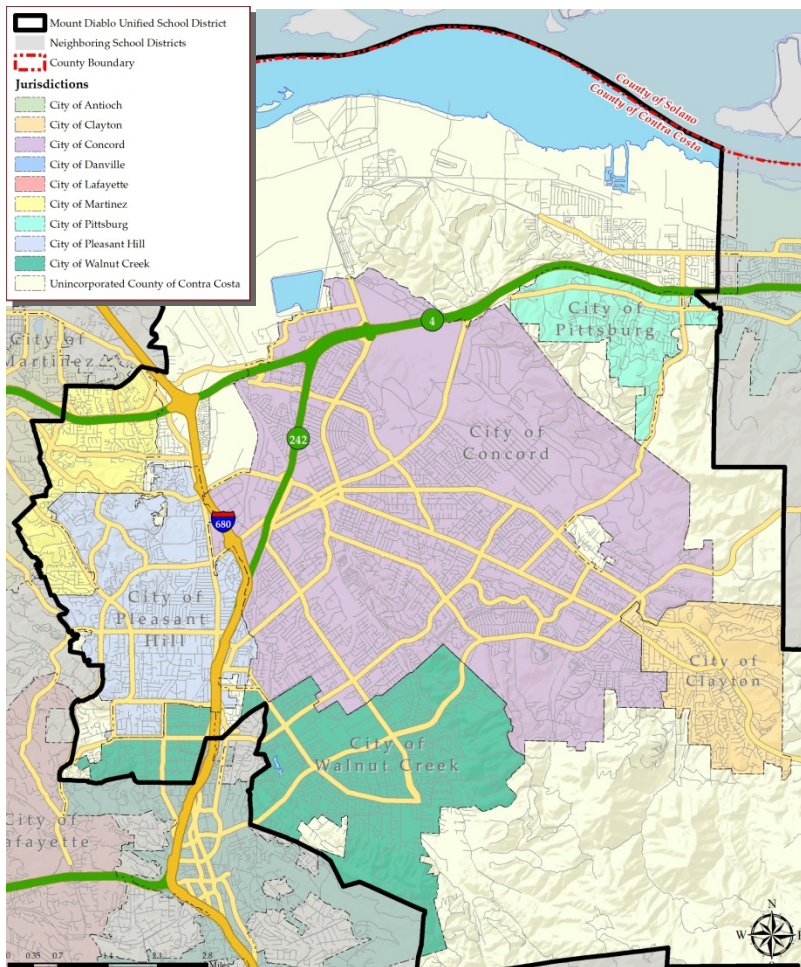


Respect communities of interest, as much as possible



DISTRICT DEMOGRAPHICS

2010 CENSUS DATA



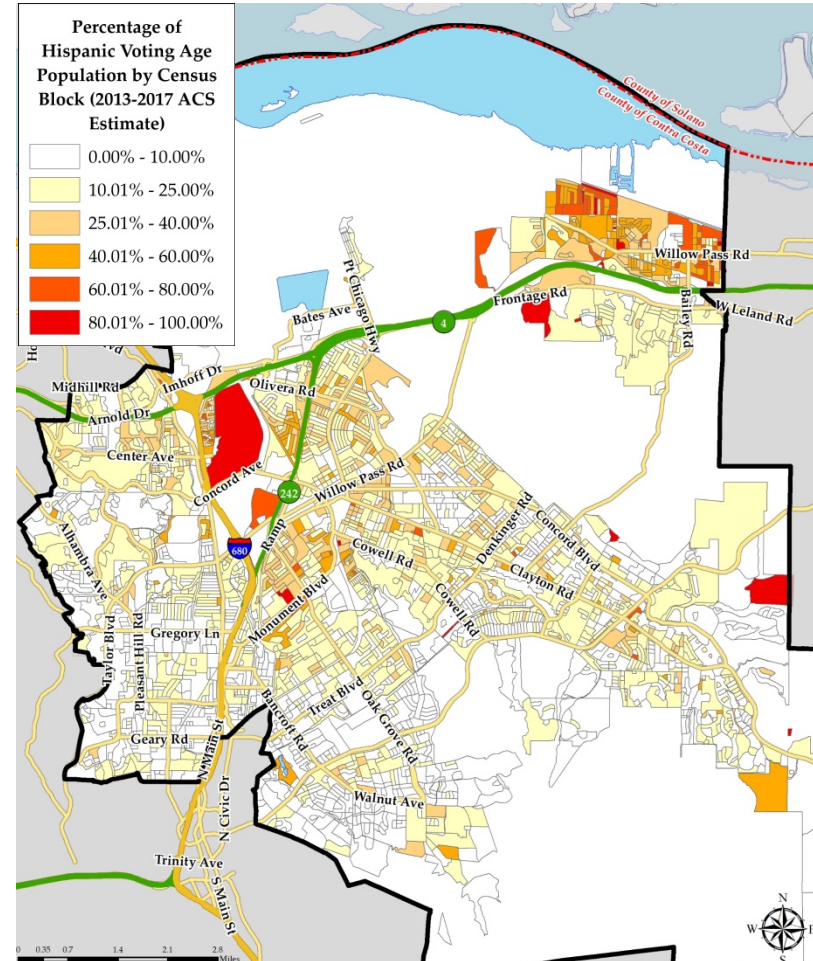
Population	Total Population		Age 18 and over	
	Total	%	Total	%
Hispanic/Latino	61,290	24.48%	40,720	21.03%
White	137,460	54.90%	114,004	58.86%
Black/ African American	9,017	3.60%	6,722	3.47%
American Indian/ Alaska Native	709	0.28%	584	0.30%
Asian	30,712	12.27%	25,169	13.00%
Native Hawaiian/ Pacific Islander	1,114	0.44%	810	0.42%
Other	605	0.24%	405	0.21%
Two or More Races	9,464	3.78%	5,257	2.71%
Total Population	250,371	100.00%	193,671	100.00%



DISTRICT DEMOGRAPHICS

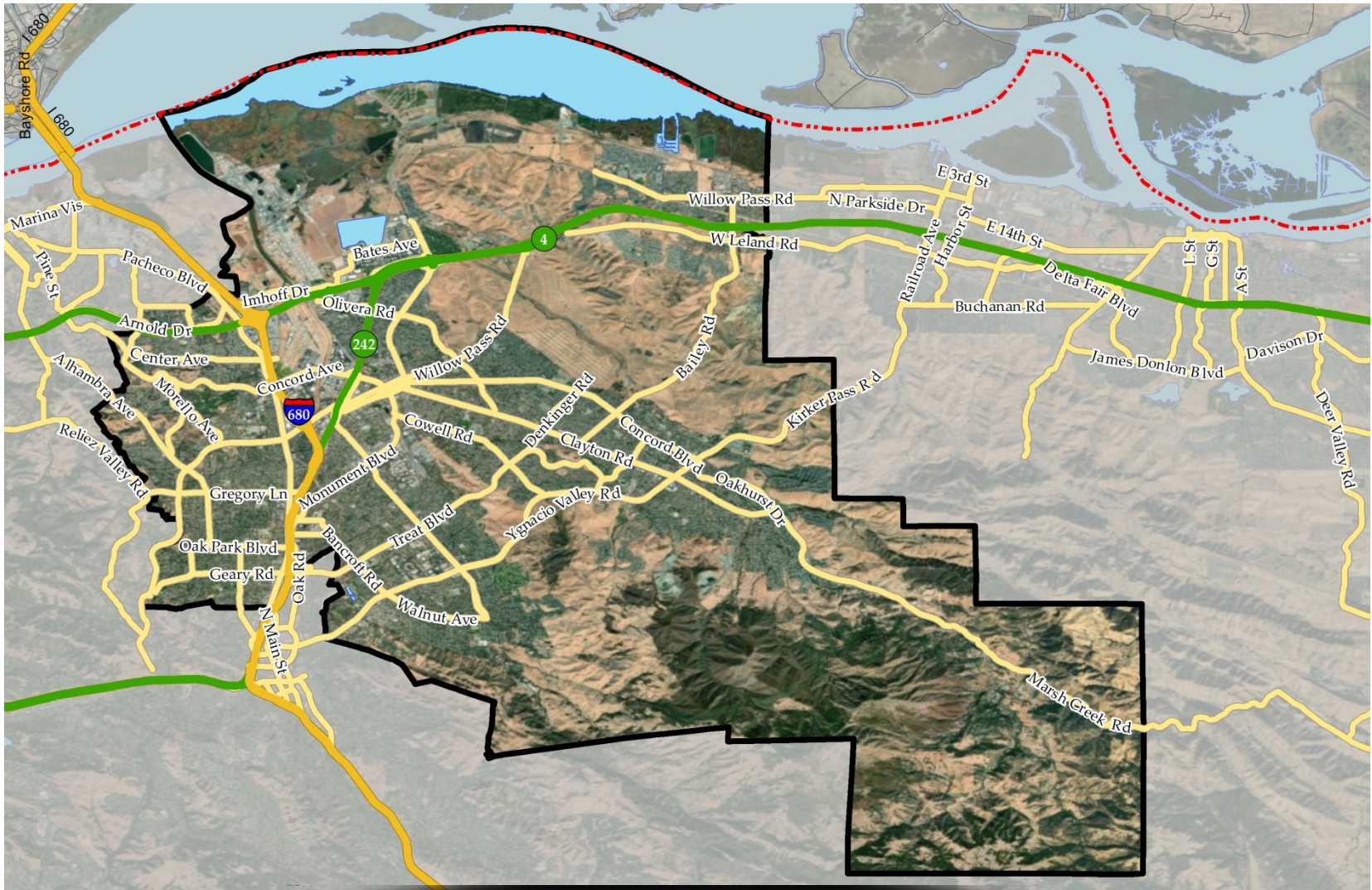
CITIZEN VOTING AGE POPULATION ESTIMATES

Population	2013-2017 CVAP	
	Total	%
Hispanic/Latino	29,769	16.38%
White	113,706	62.56%
Black/African American	8,260	4.54%
American Indian/ Alaska Native	464	0.26%
Asian	22,239	12.24%
Native Hawaiian/ Pacific Islander	726	0.40%
Two or More Races	6,596	3.63%
Total Population	181,760	100.00%





HOW SHOULD LINES BE DRAWN?





PRE-MAP PUBLIC HEARING

EXAMPLES OF FEEDBACK FOR MAPPING PROCESS

“I would like to keep Neighborhood X and Neighborhood Y in the same trustee area...”



PRE-MAP PUBLIC HEARING

EXAMPLES OF FEEDBACK FOR MAPPING PROCESS

I think:

- Highway 242
- Highway 4
- Highway 680
- Clayton Road

... may make sense as a trustee area boundary because ...

- It keeps communities together
- It provides good representation



PRE-MAP PUBLIC HEARING

EXAMPLES OF FEEDBACK FOR MAPPING PROCESS

I think:

- All of Y community should be in one area
- Each elementary or middle boundary should be in multiple/single areas
- Every trustee area should serve multiple school boundaries/sites

... may make sense as a trustee area boundary because ...

- It keeps communities together
- It provides good representation



QUESTIONS

Larry Ferchaw
Cooperative Strategies
949.250.8300
lferchaw@coopstrategies.com

Lawrence M. Schoenke
Atkinson, Andelson, Loya, Ruud & Romo
925.251.8505
lschoenke@aalrr.com