

Update on In-Person Learning

GOVERNING BOARD MEETING

February 24, 2021

February 16, 2021

*Purple Tier

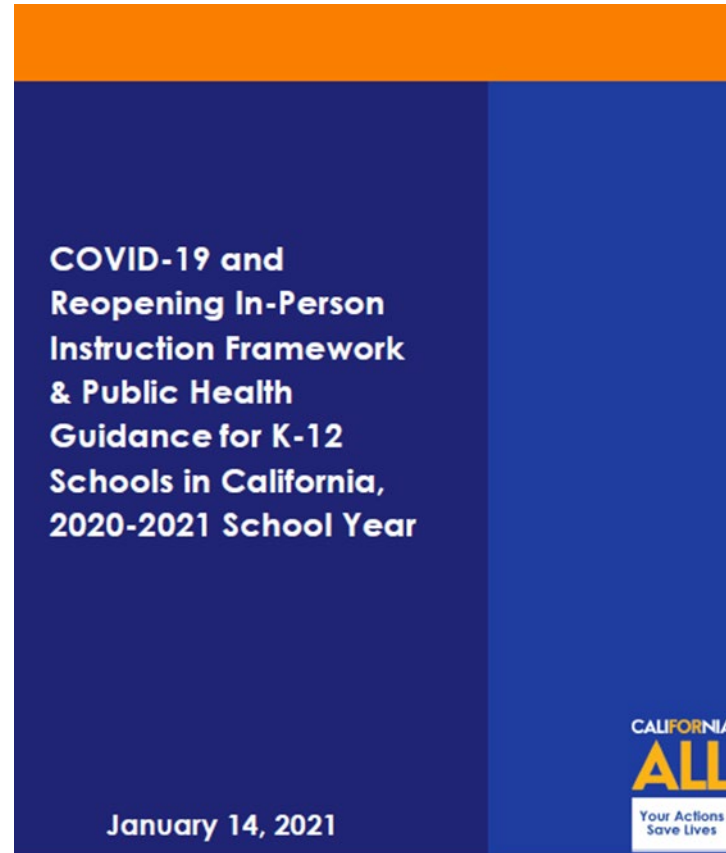
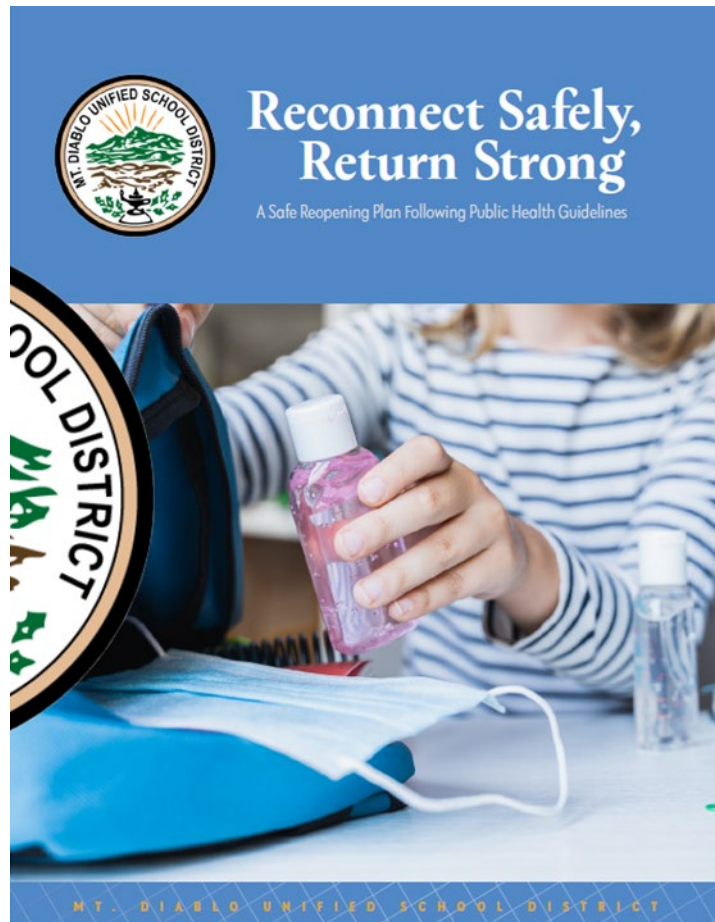
Red Tier

Orange Tier

Yellow Tier



Safety Guidelines



CALIFORNIA
ALL
Your Actions
Save Lives

January 14, 2021



Safety Measures

1. Masks are Mandatory for Everyone (Students and Staff)
2. Passive and Active Screening
3. Social Distancing (Reduced Number of Students and Classroom Spacing)
4. Hand Washing and Hand Sanitizers Available Throughout Campus
5. Testing Available for all Staff

MDUSD Employees

- I. Regular on Site COVID-19 Testing
- II. Link to Register for Vaccine Shared with all Staff, February 18th
- III. Full Reopening Fall/2021 (Pending Updated Guidance from County and State)



Phasing In Students

- I. Legal Testing and Meetings
- II. Support Groups (Red Tier)
- III. Hybrid Elementary Students & Secondary Students (Red Tier & Final Agreement with Labor Partners)
- IV. Full Reopening Fall/2021 (Pending Updated Guidance from County and State)



Academic and Social Emotional Support Groups

1. Special Education Populations
2. Homeless
3. Foster Youth
4. Limited English Proficiency
5. Students in Need



Stable Groups

Academic and Social Emotional Support

- Voluntary for Students
- Students and Staff Groups Will Remain Together



LIMITED HYBRID

Elementary Phase

- a. TK, K, 1 – *March 2021
- b. 2-3 – *March 2021
- c. 4-5 – *March 2021

*Pending County Metrics and Labor Agreements



LIMITED HYBRID

Middle School Phase

- a. 6th Grade – *March / April
- b. 7th Grade – *March / April
- c. 8th Grade – *March / April

*Pending County Metrics and Labor Agreements



LIMITED HYBRID

High School Phase

- a. 9th Grade – *March / April
- b. 10th Grade – *March / April
- c. 11th & 12th Grade – *March / April

*Pending County Metrics and Labor Agreements



Family Survey

Sent - February 20, 2021

Due – March 1, 2021

- Grade
- School Site
- Return Face to Face
- Remain Distance Learning
- Special Considerations



Next Steps

1. School Sites are Continuing to Prepare Classrooms and Non-Instructional Spaces
2. PPE has been Delivered to all Schools
3. Survey has been Deployed
4. Negotiations are Ongoing
5. Monitoring County Health Metrics
6. Finalizing Schedule
7. Sending Compact to Families who Wish to Return
8. County Health Estimates Mid March Potential Opening

