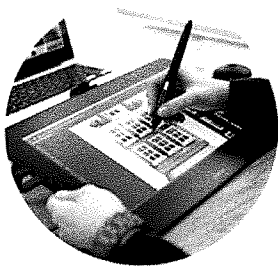
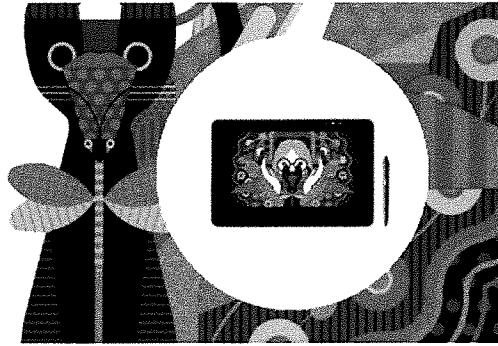


Wacom Cintiq Pro 13

WACOM  
Cintiq Pro

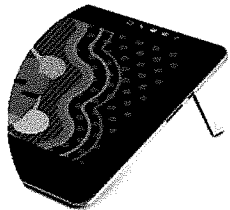
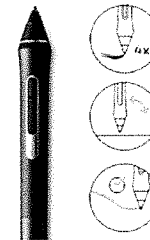
Create directly on screen  
with our most natural pen  
experience ever.

Live. Dare. Create.



For professional artists and designers who want to add a world-class pen-on-screen creative experience to their Mac or PC, Wacom Cintiq Pro offers Wacom's most powerful array of capabilities in a creative pen display. Cintiq Pro features the Wacom Pro Pen 2, high display resolution and color performance, and multi-touch control.

The new Wacom Pro Pen 2 gives you Wacom's most accurate and advanced pen performance and realistic pen-on-paper feel. With 4x higher pen accuracy and pressure sensitivity (compared to previous models), outstanding tilt recognition and virtually lag-free tracking, the Pro Pen 2 delivers the ultimate in creative control.



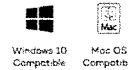
The Wacom Cintiq Pro 13 features a beautiful new design with an etched-glass screen and an integrated stand for working at an inclined angle. Wacom Cintiq Pro works with your favorite 2D and 3D creative software to give you the authentic feel, accuracy and control to create anything that you can imagine.



Wacom Cintiq Pro 13 packs HD resolution (1920 x 1080px) into a pin-sharp 13" LCD display. And with a wide color gamut (87% of Adobe RGB), you can be sure what you see is what you're going to get.



All models support intuitive multi-touch gestures to speed your workflow, letting you zoom, pan and navigate with a sweep of your fingers. You can also customize your workflow with programmable on-screen Radial Menus, and pen side switches or you can add the ExpressKey Remote (sold separately) for additional shortcut keys and navigational controls.



Connect Cintiq Pro to your Mac or PC with the included USB-C cable or use the included Wacom Link and cables to connect via Mini DisplayPort or standard USB.

Product Trailer

