



**MT. DIABLO UNIFIED SCHOOL DISTRICT
HOMELESS OUTREACH PROGRAM FOR EDUCATION
(MT. DIABLO HOPE)**



925.682.8000; 3054
hope@mdusd.org
www.mdusd.org/hope

Mt. Diablo Unified School District
School and Community Services
Homeless Outreach Program for Education (HOPE)

MT. DIABLO HOPE: INTRODUCTIONS

SCHOOL AND COMMUNITY SERVICES

Felicia Stuckey-Smith
Director, Student Services

~

Kim Hendrick
School Counselor

~

Monie Bohnsack
Social Work Specialist

Evelyn Mercado
Family School Resource Worker

~

Chris Carlay
Social Work Specialist

~

Vicky Conerly
Senior Secretary

James Wogan,
Assistant Director
School and Community Services

WWW.MDUSD.ORG/HOPE

DEFINITION OF "HOMELESS"

Who is considered homeless? Under the McKinney-Vento Act, reauthorized under Every Student Succeeds Act (ESSA), students who lack a fixed, regular, and adequate nighttime residence are legally “homeless.”

- “doubled up” - family moves in with another family
- motels, hotels, shelters, trailer parks, or camping grounds
- on the streets or in vehicle
- Unaccompanied minors, “couch surfing” runaway teens
- Recent immigrant (migrant) students who lived in one of these circumstances this school year.

HOMELESSNESS HAS LASTING IMPACT

Homelessness has significant negative impacts on children academically, socially, and emotionally.

- ▶ Absenteeism
- ▶ School mobility
- ▶ Missing school work
- ▶ Lower grades
- ▶ Increased risk of dropping out of school
- ▶ Lower rates of A-G completion

HOMELESS STUDENTS ARE ...

2 TIMES AS LIKELY AS THEIR HOUSED PEERS TO SCORE POORLY ON STANDARDIZED TESTS IN MATH AND READING.

3 TIMES MORE LIKELY TO BE PLACED IN SPECIAL EDUCATION PROGRAMS.

4 TIMES MORE LIKELY TO DROP OUT OF SCHOOL.

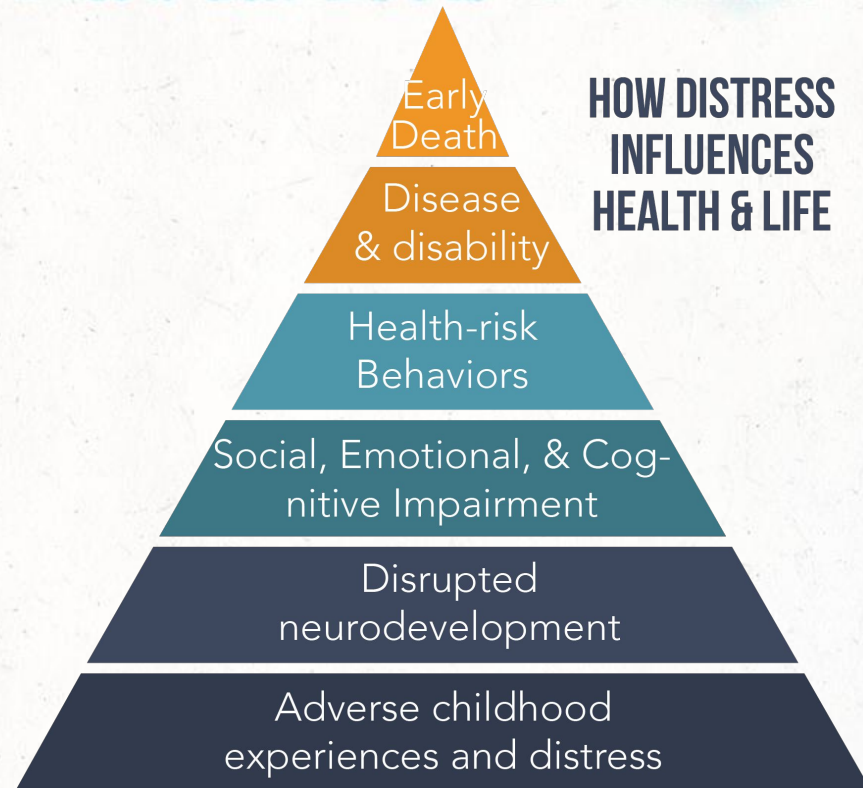
8 TO 9 TIMES MORE LIKELY TO REPEAT GRADES.

SOURCES

Homes for the Homeless,
Access to Success:
Educational Needs of Homeless
Children and Families, 1993,
and
National Center on Family Homelessness,
"Homeless Children: America's
New Outcasts," 1999.

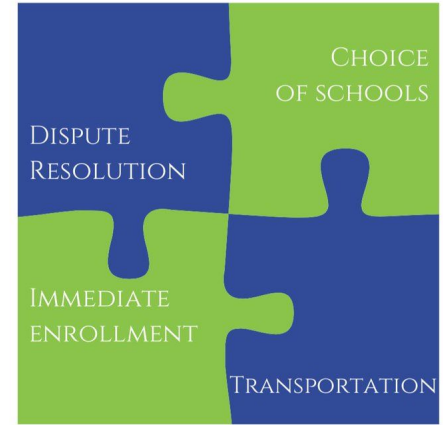
HOMELESSNESS HAS LASTING IMPACT

- ▶ Chronic health conditions (asthma, diabetes, STD's)
- ▶ Trauma - i.e. Adverse Childhood Experiences (ACEs)
- ▶ Increased mental health conditions, anxiety, depression, PTSD
- ▶ Higher rates of substance abuse
- ▶ Fewer friendships / participation in activities
- ▶ Increased involvement with Juvenile Probation



MCKINNEY VENTO PROTECTIONS

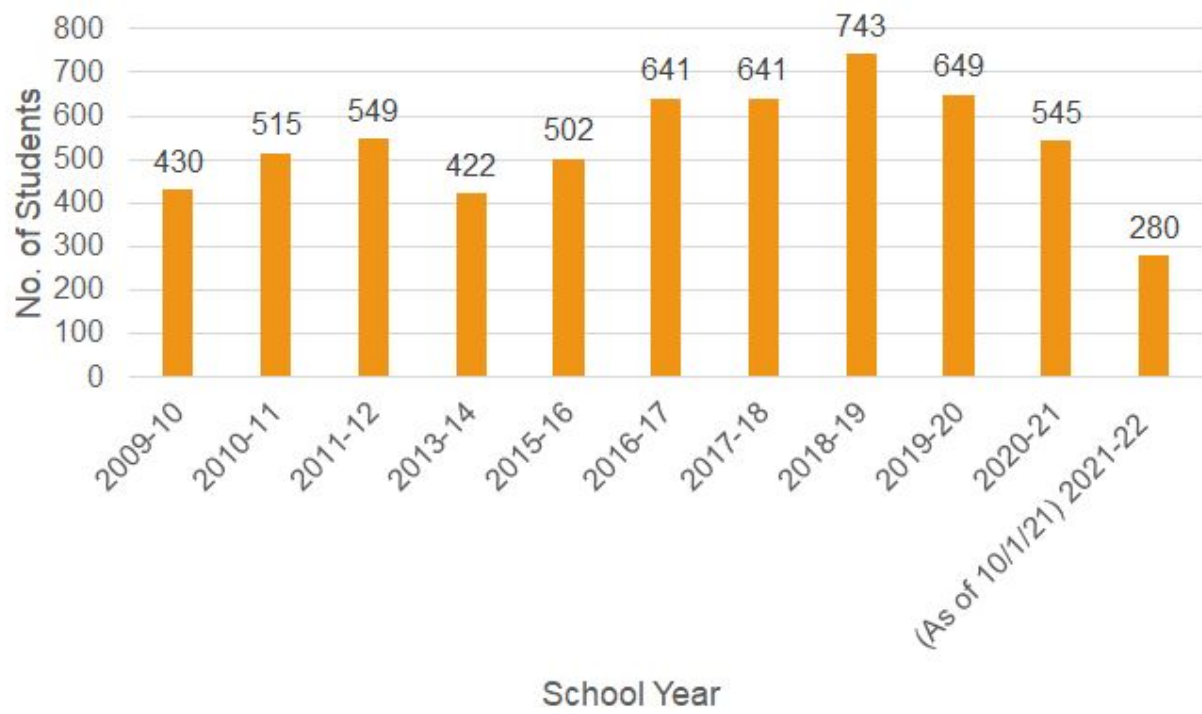
- ▶ Right to immediate enrollment, even if no records or uniforms.
- ▶ Right to remain at school of origin, even if they move.
- ▶ Transportation to/from school (public transportation).
- ▶ Nutrition (meals served at school).
- ▶ Access to all school-sponsored events and programs.
- ▶ Right to dispute homeless status determination or enrollment decisions.



**RIGHTS UNDER
MCKINNEY
VENTO**

"HOPE IN MDUSD"

YEAR-TO-YEAR COMPARISON

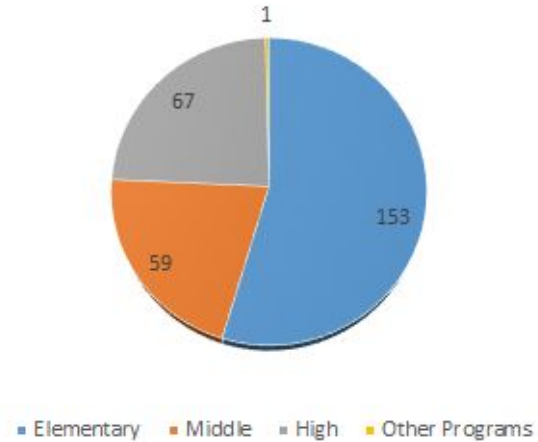


HOPE BY SCHOOL LEVEL

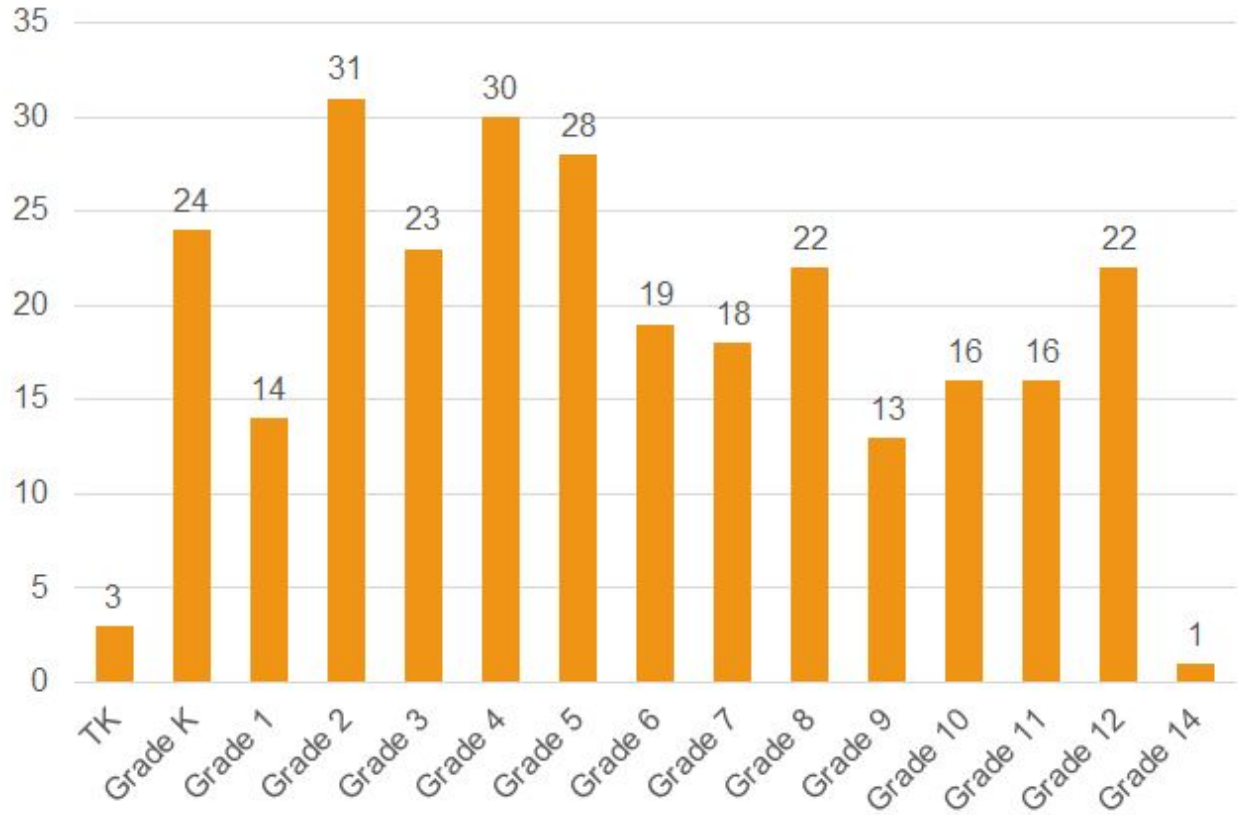
AS OF OCT. 1, 2021

School Level	No of Students	Population Breakdown
Elementary	153	54.64%
Middle	59	21.07%
High	67	23.93%
Other Programs	1	0.36%
Totals	280	100.00%

HOPE by School Level

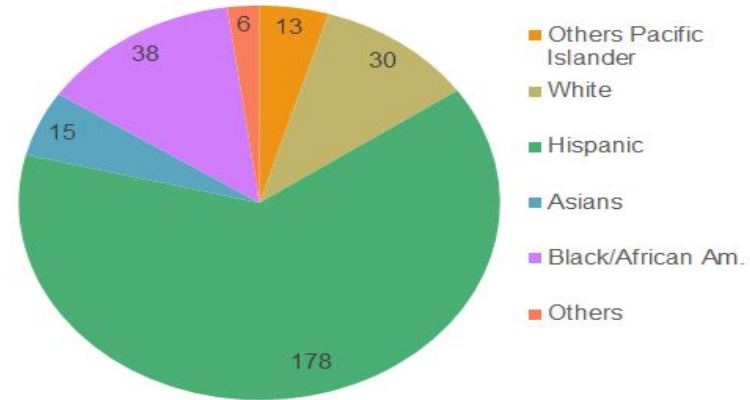


HOPE BY GRADE (AS OF OCT, 2021)





HOPE Students by Ethnicity
(as of 10/1/21)

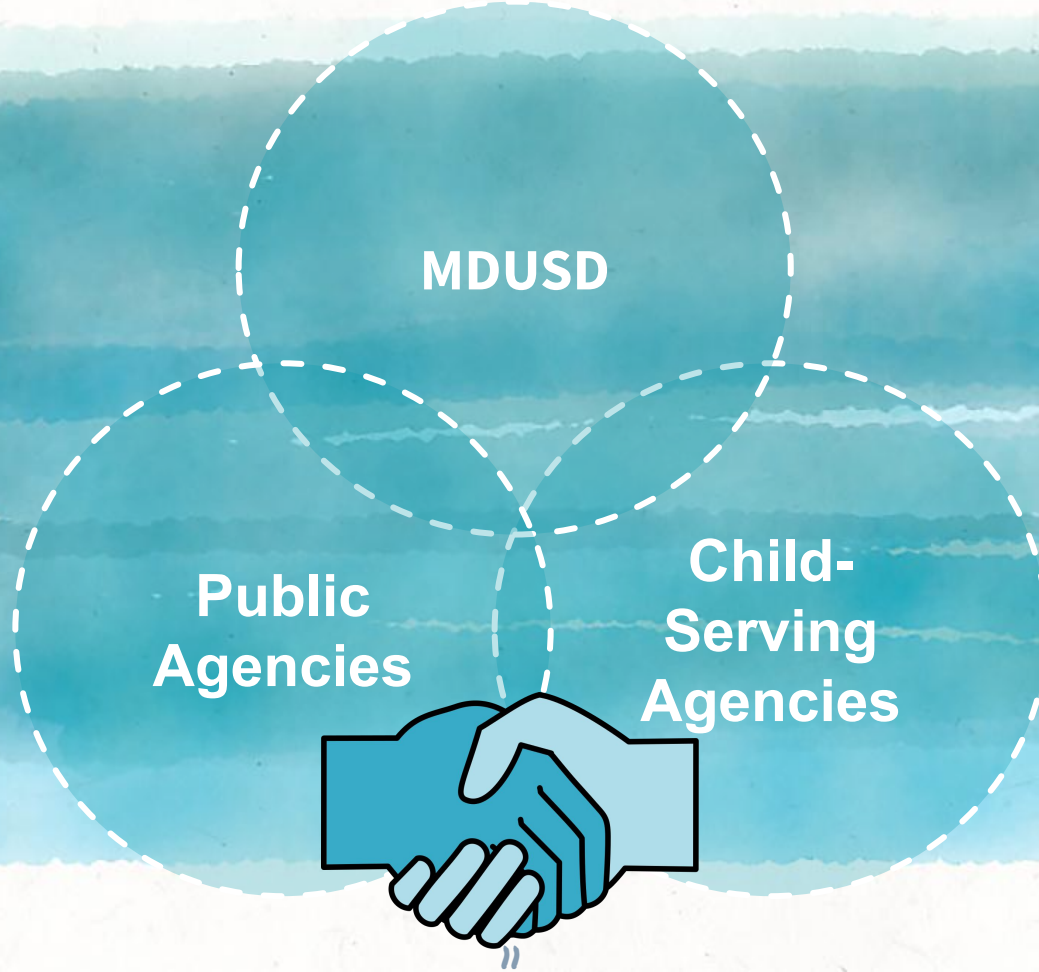


Latinx and African American students are overrepresented in MDUSD’s homeless population.

- ▶ ***Latino students comprise 64% of HOPE vs. 43% of MDUSD Population***
- ▶ ***African-American students comprise 14% of HOPE vs. 2.89% of MDUSD***

Race/Ethnicity	Percentage
African American	13.57%
Hispanic	63.57%
White	10.71%
Asian	5.36%
Other Pacific Islander	4.64%
Other	2.14%
Total	100.00%

INTERAGENCY COLLABORATION



INTERSECTIONALITY AND HOMELESSNESS

LGBTQ+

LGBTQ youth have more than twice the risk of being homeless than their cisgender and heterosexual peers.

IMMIGRANT STATUS / ENGLISH LANGUAGE LEARNERS

Recent immigrant families often are susceptible to poverty, difficulty accessing services, employment/housing insecurity, high stress, language challenges, mental health concerns, etc. Recent immigrant students are identified for HOPE when they meet criteria for “homeless.”

MENTAL HEALTH

Stress connected to homelessness often leads to increased anxiety, fear, depression, and sleeplessness. Pre-existing mental health symptoms are exacerbated by the stress of housing instability.

TRAUMA

Homeless students are more likely to experience trauma, which has a significant impact on , as well as social/emotional and behavioral challenges in schools.

DISABILITIES

Homeless students with disabilities face significant risk of chronic homelessness and hardship.

COMMERCIAL SEXUAL EXPLOITATION OF CHILDREN (CSEC)

Homeless students are a particularly vulnerable to higher risk of exploitation, and school problems. Specialized support is needed for intervention to mitigate the critical risk of this population.

MT. DIABLO HOPE: SERVICES AND SUPPORT

Counseling

School Wellness Centers
Social Work Specialists
Social Work Interns



Case Management

Care Coordination
Linkage to resources
(health, mental health)
Multi-generational support



Academic Support

Tracking, Monitoring & Tutoring
After-School Program
Access to Instruction



Training/Raising Awareness

Not a “them” issue
Opportunities for community
members to “give back”



MDUSD STUDENT SERVICES DEPT. HOMELESS OUTREACH PROGRAM FOR EDUCATION (MT. DIABLO HOPE)

- Identifies and serves students experiencing homelessness
- Provides professional development (Registrars, Counselors, other role groups)
- Raises awareness and creates opportunities for communities to “give back”
- Intersectionality: LGBTQ+ - Equity - Recent Immigrant - Poverty - Trauma
- Trauma-Informed: attended training by Leanne Wheeler, CDE
- Upholds protections under McKinney Vento (ESSA):
- Data / Equity: Continuous cycle of inquiry and program improvement
- Seeks guidance from MDUSD Board and Superintendent

THANK YOU!

Questions?

hope@mdusd.org

925.682.8000; 3054