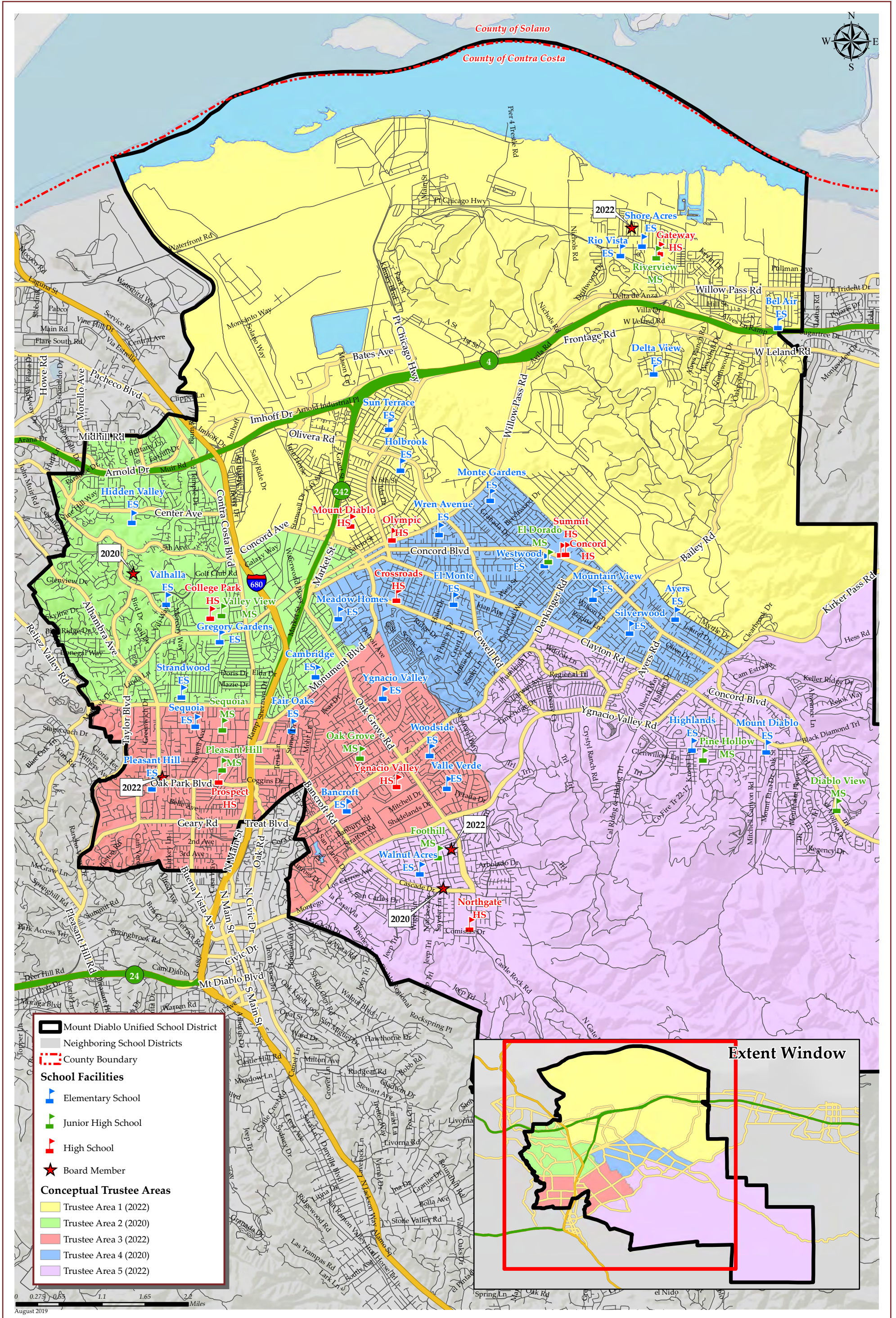


MT DIABLO UNIFIED SCHOOL DISTRICT CONCEPTUAL TRUSTEE AREAS - SCENARIO BLUE



MT DIABLO UNIFIED SCHOOL DISTRICT

CONCEPTUAL TRUSTEE AREAS - SCENARIO BLUE

Total Population (2010 Census)						
	Trustee Area 1	Trustee Area 2	Trustee Area 3	Trustee Area 4	Trustee Area 5	Variance
Population	49,669	49,345	49,817	52,666	48,874	
Population Variance	-405	-729	-257	2,592	-1,200	7.57%
	-0.81%	-1.46%	-0.51%	5.18%	-2.40%	
Hispanic/Latino	19,445	11,898	7,661	16,783	5,503	
	39.15%	24.11%	15.38%	31.87%	11.26%	
White	17,137	27,912	32,227	26,527	33,657	
	34.50%	56.57%	64.69%	50.37%	68.86%	
Black/ African American	3,807	1,319	1,190	1,791	910	
	7.66%	2.67%	2.39%	3.40%	1.86%	
American Indian/ Alaska Native	170	129	113	169	128	
	0.34%	0.26%	0.23%	0.32%	0.26%	
Asian	6,871	6,017	6,275	5,102	6,447	
	13.83%	12.19%	12.60%	9.69%	13.19%	
Native Hawaiian/ Other Pacific Islander	387	185	158	288	96	
	0.78%	0.37%	0.32%	0.55%	0.20%	
Other	120	80	137	134	134	
	0.24%	0.16%	0.28%	0.25%	0.27%	
Two or More Races	1,732	1,805	2,056	1,872	1,999	
	3.49%	3.66%	4.13%	3.55%	4.09%	

Population 18 and Over (2010 Census)						
	Trustee Area 1	Trustee Area 2	Trustee Area 3	Trustee Area 4	Trustee Area 5	Variance
Population	36,993	38,476	39,893	40,586	37,723	
Population Variance	-1,741	-258	1,159	1,852	-1,011	
	-4.50%	-0.67%	2.99%	4.78%	-2.61%	
Hispanic/Latino	12,586	7,915	5,338	11,113	3,768	
	34.02%	20.57%	13.38%	27.38%	9.99%	
White	14,656	23,233	26,981	22,329	26,805	
	39.62%	60.38%	67.63%	55.02%	71.06%	
Black/ African American	2,726	973	935	1,375	713	
	7.37%	2.53%	2.34%	3.39%	1.89%	
American Indian/ Alaska Native	144	114	97	138	91	
	0.39%	0.30%	0.24%	0.34%	0.24%	
Asian	5,492	5,073	5,176	4,216	5,212	
	14.85%	13.18%	12.97%	10.39%	13.82%	
Native Hawaiian/ Other Pacific Islander	270	136	108	221	75	
	0.73%	0.35%	0.27%	0.54%	0.20%	
Other	84	57	89	93	82	
	0.23%	0.15%	0.22%	0.23%	0.22%	
Two or More Races	1,035	975	1,169	1,101	977	
	2.80%	2.53%	2.93%	2.71%	2.59%	

Citizens by Voting Age Population Estimate (2013-2017)						
	Trustee Area 1	Trustee Area 2	Trustee Area 3	Trustee Area 4	Trustee Area 5	Variance
Population	35,060	34,210	38,811	35,687	37,992	
Population Variance	-1,292	-2,142	2,459	-665	1,640	
	-3.55%	-5.89%	6.76%	-1.83%	4.51%	
Hispanic/Latino	9,677	5,336	4,043	6,715	3,998	
	27.60%	15.60%	10.42%	18.82%	10.52%	
White	14,811	22,387	27,368	21,775	27,365	
	42.24%	65.44%	70.52%	61.02%	72.03%	
Black/ African American	3,104	972	1,240	2,086	858	
	8.85%	2.84%	3.19%	5.85%	2.26%	
American Indian/ Alaska Native	153	86	23	39	163	
	0.44%	0.25%	0.06%	0.11%	0.43%	
Asian	5,984	3,591	4,659	3,576	4,429	
	17.07%	10.50%	12.00%	10.02%	11.66%	
Native Hawaiian/ Other Pacific Islander	235	137	134	150	70	
	0.67%	0.40%	0.35%	0.42%	0.18%	
Other	0	0	0	0	0	
	0.00%	0.00%	0.00%	0.00%	0.00%	
Two or More Races	1,096	1,701	1,344	1,346	1,109	
	3.13%	4.97%	3.46%	3.77%	2.92%	