

Mt. Diablo Unified School District AY20-21 Partnership Roadmap



DATE:	12/10/2020
PREPARED FOR:	Maria Candelaria Perez Barreto and Carmen Garcés, Mt. Diablo Unified School District
FEV Tutor Contact:	Parisa Moradi, parisa.m@fevtutor.com

FEV Tutor **Partners** with K-12 Educators to Ensure **Effective** 1:1, Live Tutoring **Programs**

Organization & Mission

Our Approach

Our Core Team

FEV Tutor Platform Features

The Academic Success Team

Family & Student Engagement Team

The Data Analysis Team

Evidence of Success: Our Partners & Research

Expected Outcomes

Services Timeline

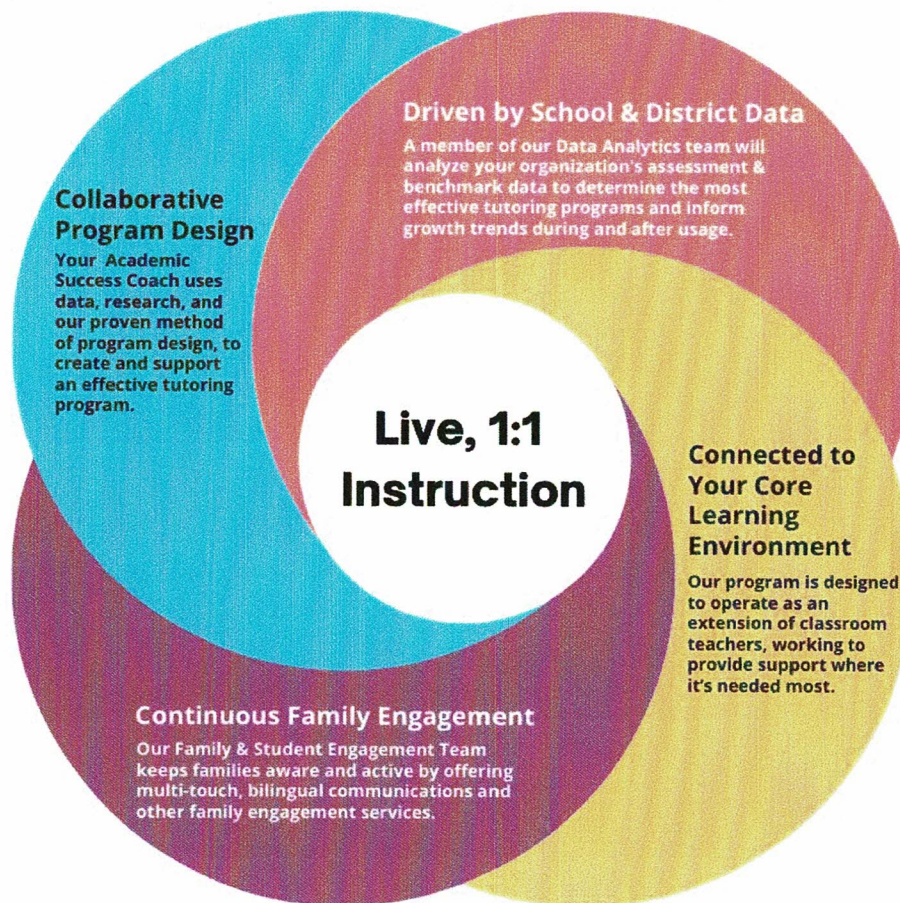
Appendix

Our Organization

FEV Tutor partners with K-12 school districts nationally to provide **1:1 online tutoring services** that operate **as a natural extension of each student's core learning environment**. Our **ESSA-approved programs** are strategically designed in close collaboration with each partner district to accelerate learning for every student.

Our Approach

We believe that the common denominator for all successful initiatives is a strategic partnership. This principle has become central to our model to help districts reach goals and drive key learning initiatives. We've found that our collaborative approach ensures that **you have unparalleled support** across planning and implementation, buy-in and usage, and analysis and growth. Starting on day one of our partnership, **we work closely with your educators to design an effective program that allows for rapid deployment**. This approach empowers teachers to **activate scalable, data-driven support services quickly and easily**.



Our Core Team

Highly-Qualified Tutors



FEV Tutor's live, 1:1 tutors operate as an extension of classroom teachers, working to provide support where it's needed most. Every tutor is extensively trained on how to effectively deliver content virtually and how to adapt instruction to align with each student's learning style. Our tutors are also SEL sensitive and trained to respond to any student issues and escalate with the appropriate steps.

Tutor Snapshot:

- Subject Matter Expert
- Minimum BA Degree
- At Least Two Years of Teaching and/or Tutoring
- Participates in a Rigorous Training Program
- Passes a Full Background Check

Academic Success Coaches



Our Academic Success Coaches (ASC) are former educators and subject matter experts who collaborate with our partners to ensure our tutoring is adopted with high levels of fidelity. This includes Blueprint Planning and ongoing support.

Academic Coach Roles:

- Identify targeted populations and recommend program models to fit within the existing learning ecosystems
- Analyze data to inform planning and align our programs with your instructional strategies
- Create personalized learning plans for each student for maximum impact
- Actively communicate and adjust to ensure effective program outcomes

Our Core Team Cont.

Family & Student Engagement Team



The Family & Student Engagement Team develops a productive partnership with parents.

For no-cost, members of the FSE team offer weekly, multi-touch communications and other engagement services that help keep session attendance high and stakeholder buy-in.

Family & Student Engagement Roles:

- Introduce families to FEV Tutor's programs, benefits, and expectations
- Develop flexible schedules to meet each student's availability
- Notify parents with reminders, updates, and changes to tutoring services
- Communicate about student engagement, participation, and progress

Data Analysis Team



Your Academic Success Coach works with FEV Tutor's internal Data Analysis Team in order to provide your school with ongoing, easy-to-read student achievement reports, commentary from tutors, raw data, snapshot summaries, and recent trends. With access to this level of expertly analyzed data, teachers feel empowered to make informed instructional decisions as part of their daily routine.

FEV Tutor's custom reports provide educators with the most relevant data to inform initiatives. Leaders have deep insight into program efficacy and can share data and easy-to-understand reports quickly.

Data Reports for Individual Students:

- Attendance
- Learning Objectives
- Grades and Subjects
- Benchmark Scores
- Formative Assessment Data – Exit Ticket Scores
- Commentary From Tutors
- Student Feedback
- Session Recordings – for Review/Study Tool

Reports for Stakeholders:

- Principals
- Assistant Principal
- Instructional Specialists
- Classroom Teachers
- Program Leaders
- District Administration

FEV Tutor Platform Features



LIVE 1:1 SUPPORT

Flexible session options to meet busy students' schedules



24/7 ACCESS

On-demand availability for homework help and support



INTUITIVE DESIGN

Clear dashboards for easy navigation and action



LANGUAGE TOGGLE

Multilingual site capabilities to guide every student



RECORDED SESSIONS

On-demand access to previous sessions for review



EXIT TICKETS

Captured session feedback to inform next steps or improve



ESSAY UPLOAD

Pre-session document review to guide tutoring discussion



INTERACTIVE WHITEBOARD

Virtual environment to interact with live tutors



SCREEN SHARING

Ability for students to screen share an activity with their tutor for improved collaboration



SCAFFOLDED LESSONS

"I Do, We Do, You Do" Gradual Release of Responsibility to lead students to concept mastery



FLEXIBLE LEARNING STYLES

Multiple communication tools empower students to engage using a preferred learning style



EASY-TO-ACCESS REPORTS

Personalized reports about each session to inform learning

Academic Success Team

Cultivating Successful Partnerships to Create Positive Learning Trajectories

Our Academic Success Coaches (ASC) leverage data, research, and practitioner experience to design a personalized tutoring program that operates as a natural extension of your learning environment. Each district's designated coach will collaborate with partners to ensure our ESSA-approved solution is adopted with high levels of fidelity. This includes strategic onboarding, planning, and ongoing support.

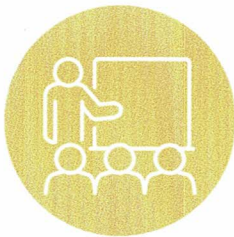
FEV Tutor's Academic Success Coaches Support Learning



Develop Blueprint Plans

Prior to launch, your dedicated Academic Success Coach (ASC) will analyze existing student data, explore core learning environments, and review district initiatives. Based on this information, the ASC will develop a tailor-fit Blueprint Plan that includes:

- Creating SMART Goals
- Identifying targeted student cohorts and determining the most qualified tutors for the population's needs
- Designing effective learning plans
- Establishing schedules for 1:1 tutoring service



Provide Training

After stakeholders approve FEV Tutor's custom Blueprint Plan, your ASC will provide comprehensive training. These interactive sessions establish the foundations for a live, 1:1 virtual tutoring program. Classroom teachers and key educators will discover:

- Best practices to communicate and collaborate with our team
- Successful tutoring models across similar districts
- Methods for effective 21st-century learning
- How to leverage weekly 2-way data shares and reports



Support Ongoing Efforts

After students have started working within the appropriate tutoring services, your assigned ASC will continue to engage and nurture our partnership. Throughout the process, your team will have:

- Full access to the Family & Student Engagement services
- Weekly communication about program updates, feedback, data reviews, and recommendations for improvement
- Monthly in-depth progress reports and data walk-throughs
- A summative impact analysis report to analyze FEV Tutor data with school benchmark data

Family & Student Engagement Team

Your Partner for Driving Stakeholder Engagement

There are several factors that contribute to a student's success. However, research has demonstrated that **family engagement is among the most critical indicators of academic growth**. The National Education Association has reported that high levels of home engagement correlate with student achievement, social-emotional wellness, and attendance. These positive outcomes were found across all socioeconomic backgrounds.

FEV Tutor Family & Student Engagement Team

To ensure families have insight into FEV Tutor's services, our Family & Student Engagement Team develops a productive partnership with parents. **For no additional cost**, a member of the FEV team offers multi-touch communications and other family engagement services that include:



INITIAL OUTREACH

Introduce families to virtual tutoring and share FEV Tutor's benefits & expectations.



FLEXIBLE SCHEDULING

Create a tutoring schedule that meets each student's availability.



NOTIFICATION MESSAGES

Deploy frequent reminders & updates about upcoming sessions, missed lessons, or changes to services.



ONGOING UPDATES

Communicate updates about student engagement, participation, and progress.



24/7 SUPPORT

Access to customer support & tutoring services any time, day or night.



BILINGUAL SERVICES

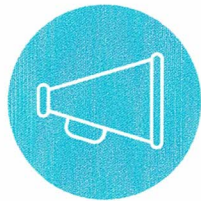
All activities are available in multiple languages.

The Data Analysis Team

Continuous Data Analysis for Continued Growth

Using the benchmark and assessment data from each district, our data team compiles internal usage data alongside the district's standardized assessment data so that we can accurately assess the overall effectiveness of the intervention. The team is also responsible for weekly, monthly, and annual data analysis and impact reports.

Our Data Analysis Team Provides Actionable Meaningful Reports



Daily Session Alerts & Reminders

As part of our systematic approach to ensuring high-levels of student engagement, our platform sends daily session alerts and reminders via text and email back to parents and students.



Weekly Progress Reports

All stakeholders including Teachers, Admin, Students, and Parents receive weekly email snapshots with a quick summary of student attendance, academic performance and feedback.



24/7 Access to Reporting Dashboards

FEV Tutor Reporting Dashboards will be made available to all stakeholders and our Academic Success Coach (ASC) will provide training on best practices for leveraging the reports for data-driven-instruction (DDI).



Academic Growth Analysis

Our Data Analysis Team runs seasonal (Fall, Winter, and Spring) analyses correlating FEV Tutor performance and participation data back to tangible measures of student achievement and results that matter, including MDUSD, state, and benchmark assessments. Summative reports are provided to key stakeholders for further analysis, review, and board presentations.

Evidence of Success

Research

1. An Examination of an Online Tutoring Program's Impact on Low-Achieving Middle School Students' Mathematics Achievement

Abstract: The purpose of this mixed-methods study was to determine the impact of synchronous online tutoring services on struggling middle school students' mathematics achievement. The online tutoring was provided as a response to intervention (RTI) Tier 3 support (intensive, individualized intervention) in schools implementing a school-wide mathematics program that addresses Tier 1 (high-quality classroom instruction) and Tier 2 (small group interventions).

CHAPPELL, Shanan et al. An Examination of an Online Tutoring Program's Impact on Low-Achieving Middle School Students' Mathematics Achievement. *Online Learning*, [S.l.], v. 19, n. 5, oct. 2015. ISSN 2472-5730.

Full Text Available in Appendix A.

2. FEV Tutor: Level 2 ESSA Evidence-Based Intervention

Full Text Available in Appendix B.

3. Research Consulting Letter: Critique and Analysis of ODU Research Study (Level 2 ESSA Evidence Based Intervention)

Full Text Available in Appendix C.

4. Baltimore City Schools: Achievement Office, Letter of Review (Level 2 ESSA Evidence Based Intervention)

Full Text Available in Appendix D.

5. The COVID-19 slide: What summer learning loss can tell us about the potential impact of school closures on student academic achievement

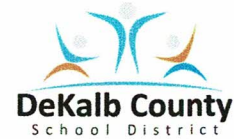
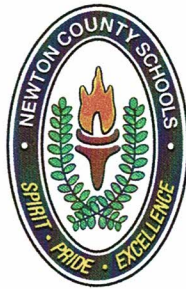
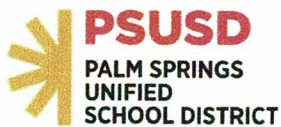
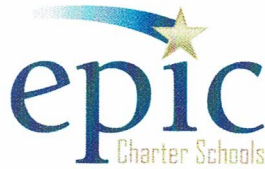
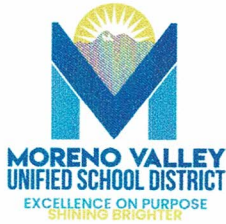
Full Text Available in Appendix C.

Abstract: COVID-19 school closures will likely impact student academic achievement. Research on summer learning loss can offer insights to help educators, policymakers, and families understand, plan for, and address some potential impacts of this extended pause when students return to school.

Kuhfeld, Megan et al. The COVID-19 slide: What summer learning loss can tell us about the potential impact of school closures on student academic achievement April 20, 2020

Our Partners

The following districts have worked with FEV Tutor over multiple years. They have used our services and the portal to effectively drive learning for students within their respective districts, and have continued to grow, and expand their services with our team. References are available upon request



Expected Outcomes

Your Success Is Our Success.

Live, 1:1 tutoring services aren't new to education. In fact, many districts are required by law to provide tutoring services to struggling students. While countless education organizations sell personalized learning or virtual tutoring portals, only **FEV Tutor partners with every district daily, weekly, and monthly to provide every student the support to thrive.**

Mt. Diablo Unified School District and FEV Tutor: Partnership by the Numbers*

TBD

NUMBER OF MDUSD STUDENTS ENROLLED

TBD

NUMBER OF ACTIVE FEV LICENSES

TBD

PERCENT OF ENGAGED STUDENTS

TBD

TOTAL LIVE LESSONS DELIVERED

TBD

PERCENT OF SCHEDULED SESSIONS ATTENDED

TBD

NUMBER OF FAMILIES ENGAGED

ACADEMIC RESULTS

120%

ACCELERATED LEARNING OUTCOMES

For students who participate in 10-12 Hours of Live 1:1 Instruction with incrementally more gains for higher attendance bands.

*Projected numbers are based on similar districts. Evidence of growth for this data is contingent on timely access to MDUSD benchmark and other district data.

Expected Outcomes Cont.

We Align Our Services to Learning Goals and Priorities

Our Data Analysis Team Provides Actionable Meaningful Reports



GOAL: Provide high-quality teaching & learning environments for all students.

Mt. Diablo Unified School District will provide students rigorous, standards-aligned instruction through FEV Tutor's engaging web-platform. Mt. Diablo Unified School District teachers and administrators work closely with their assigned Academic Success Coach to create individualized learning plans designed to support students. Since no learners are alike, MDUSD can deliver flexible tutoring services in the manner that best fits the needs of your students. Educators can execute 1:1 Live tutoring on-demand, via structured sessions, for intervention purposes, as test prep, or to meet remote learning needs.



GOAL: Prepare all students to be college, career, and world ready upon graduation.

Mt. Diablo Unified School District students will have access to standards-aligned, differentiated material through FEV Tutor's targeted online tutoring support model. If provided, benchmark and state assessment data will be used to create individualized learning plans for students designed to bridge skill-gaps, boost proficiency rates, and improve all learning. FEV provides open communication and collaboration with teachers and administrators through ongoing progress monitoring and academic growth.



GOAL: Fully engage students, parents, and the community in support of short and long term educational outcomes.

Mt. Diablo Unified School District will work to increase family engagement and provide parent outreach through FEV Tutor's bilingual Family & Student Engagement Team, empowering parents to guide and support students academically.



GOAL: Close the Opportunity Gap

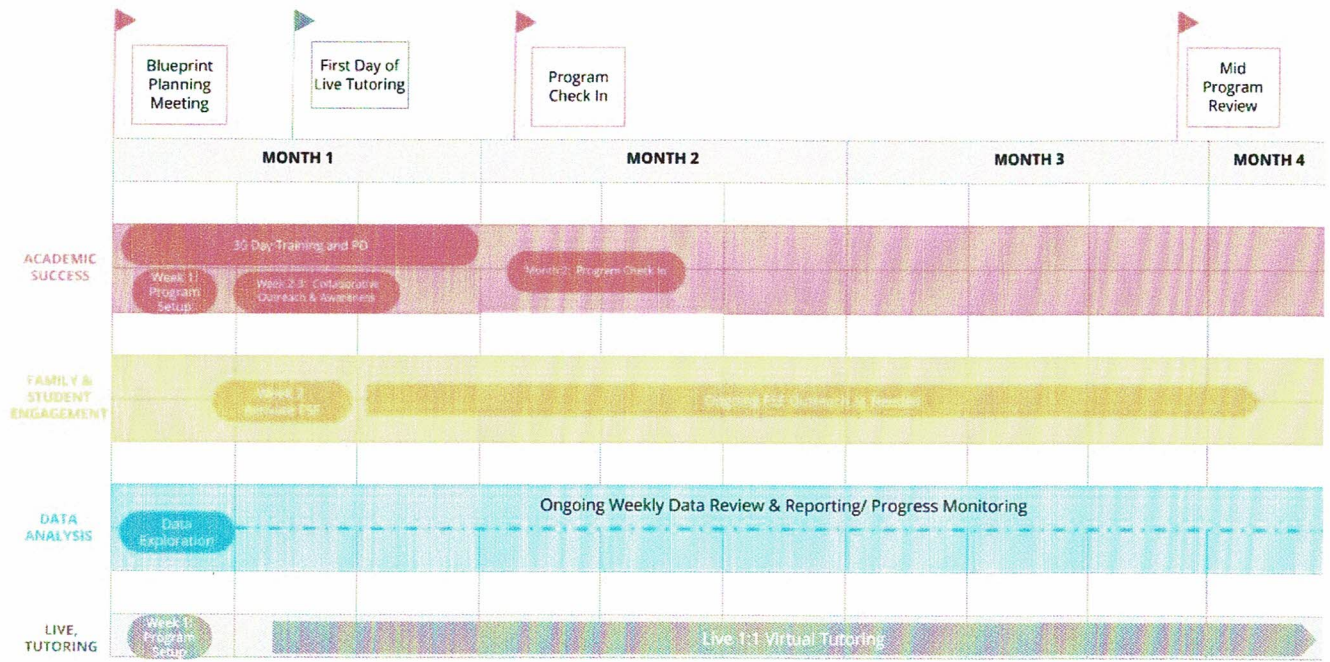
Mt. Diablo Unified School District will provide all eligible students with access to 24/7 live tutoring support that is individualized and personalized. ELL students will receive support with acquiring English proficiency through FEV Tutor's online platform and language toggle.



GOAL: Support Effective Remote Learning

As traditional models of learning shift, students may experience urgent support needs. Due to the nature of distance learning, teacher availability may be limited, and parents may not have the bandwidth nor the skill sets necessary for effective at-home learning. FEV Tutor will provide MDUSD students with on-demand Homework Help for students to access 24/7. With this model, students can request tutoring services across the core subject areas at any time.

Services Timeline



Week One: Blueprint Planning Meeting

- Collaboratively design the program with district-level curriculum and instruction leaders & other key program stakeholders.
 - Establish shared program SMARTgoals
 - Identify priority student cohorts
 - Analyze data and curriculum resources
 - Map a precise timeline for implementation

Week One: Program Setup & Registration

- Register student, teacher, and admin licenses
- Access benchmark assessment and other key integrations
- Set up customized reporting and program management
- Design and build Family & Student Engagement (FSE) Team
- Determine instructional and tutoring readiness

Week Two: Collaborative Outreach and Build Awareness

- Empowering the district with resources and district-specific content for community outreach
- Activate Family & Student Engagement (FSE) Team for awareness building and student enrollment

- FSE outreach will continue throughout the school in an adaptive manner based on ongoing data analytics and progress monitoring

Week Two: First Day of Tutoring - Go Live!

First Month: Training and Professional Development

- Virtual training workshops for school leaders, instructional coaches, teachers, and any other stakeholders
 - Led by FEV Tutor's Academic Success Coach (ASC)
 - Training on Best Practices for collaborating with the FEV Tutor Academic Success Team
 - All stakeholders will be set up with access to data & reporting and trained on Data-Driven-Instruction (DDI) best practices
 - Flexible scheduling options available for hosting multiple training and PD workshops to sync up with district and school schedules
 - ASC will collaborate ongoing with teachers, staff, and school leaders throughout the course of the school year

Week Six: Program Check-In

- Academic Success Coach connects with each school-level leader to review initial program data/feedback and make adjustments as needed. (Pending availability)
- The FEV Tutor team meets with the Mt. Diablo Unified School District leadership team to share student data, feedback, and solicit district-level feedback.