

COMMUNITY INPUT REGARDING

# REMOVAL & DISPOSITION OF TOWER; RELOCATION OF BROADCASTING EQUIPMENT

---

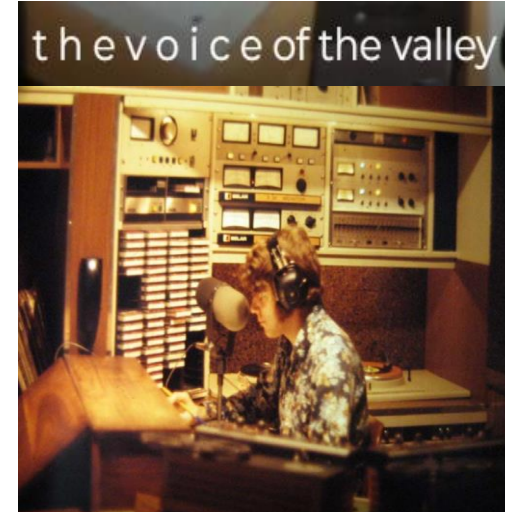
Presented by KVHS Community Group



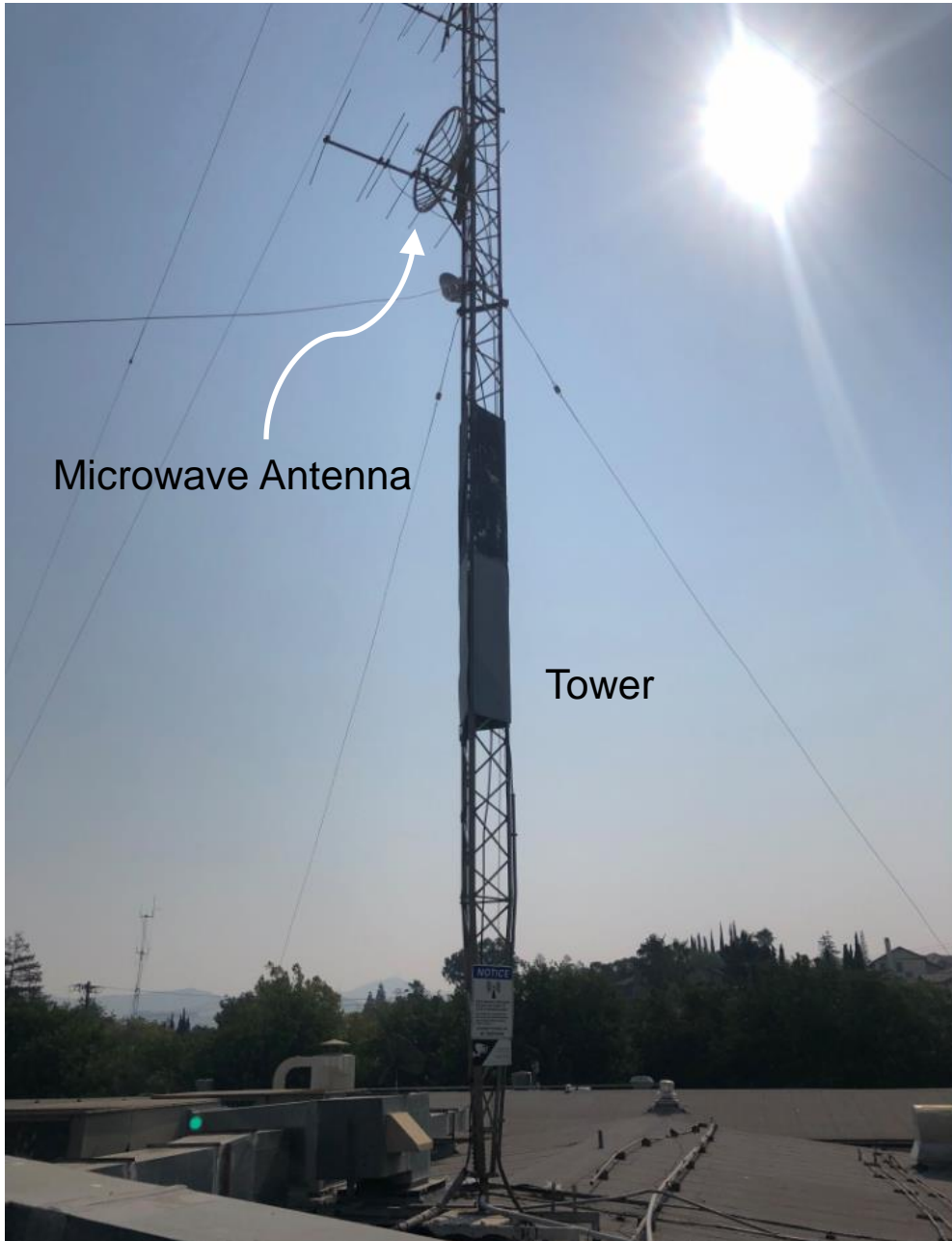
# ABOUT THE KVHS COMMUNITY GROUP

---

- Local community devoted to preservation of KVHS Radio
- Industry Experts
- KVHS Alumni and Volunteers
- The KVHS station Founder and Station Manager







# The “TOWER”

ALSO KNOWN AS “THE ANTENNA”

---

Current radio content is being sent to Television Hill thru a microwave antenna on the tower that is currently located on the CVCHS campus.

When the broadcast equipment is transferred to TV Hill the charter school tower is no longer needed.

## Removal Process

- Detach
- Dismantle & Disposition of Tower
- Roof Patch





## ERNE WILSON - CVHS EDUCATOR AND STATION FOUNDER

---

- Instrumental in the foundation of the station in the late 60's
- Sourced the donated tower that stands today
- KVHS Community Group member
- Nonprofit org: Paradise Amateur Radio Society - dedicated to assisting authorities during emergency operations



# BROADCASTING EQUIPMENT

CURRENTLY LOCATED ON CVCHS CAMPUS

---

- Small Footprint
- Physical Studio is nonessential
- Relocate to American Tower Site aka TV Hill
- Easy Transfer and Minimal Disruption



# PROPOSED LOCATION: TV HILL

---

- Since 1975, TV Hill has been the transmission site
- Consolidate all essential KVHS station equipment
- MDUSD is currently paying monthly rent
- No labor cost for relocation





# KVHS COMMUNITY GROUP SOLUTIONS

Safety



Tower structural issues don't necessitate the decommissioning of KVHS radio station.

Cost

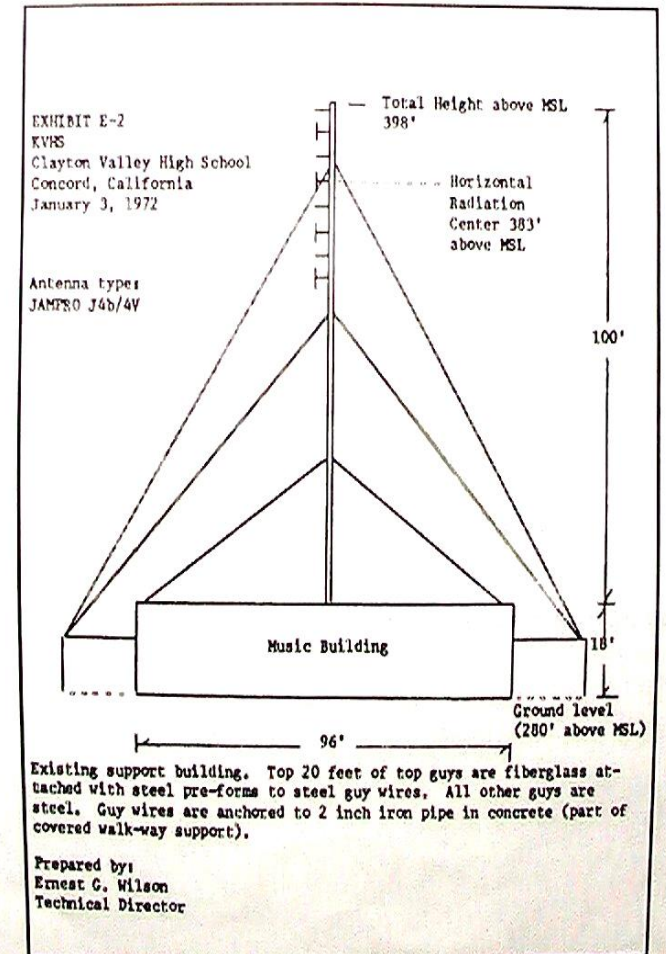


Rescoped tower removal with lower cost estimates and identified a no-cost solution for Tower disposition.

Relocation



Located a new home for the broadcasting equipment, and a no cost plan to transfer.





# CONCLUSION

---

KVHS Community Group appreciates the Board's considerations.

Recommend establishing a Committee made up of district personnel and the community.

Committee's goal would be to continue to assist the District in decision making pertaining to the renowned KVHS Station.



PUBLIC  
Q&A COMMENTS

SCHOOL BOARD  
Q&A COMMENTS

