

MOUNT DIABLO UNIFIED SCHOOL DISTRICT



nine
teen
six
ARCHITECTS

19.6

INTERVIEW
ARCHITECTURAL/ENGINEERING SERVICES No. P-20-21/22
JUNE 20, 2022

OUTLINE

Introduction

About 19six

Experience

Client Concerns

Why 19six Architects?

Q & A



LEGACY & COMMITMENT

FIRM LEGACY FOUNDED IN 1906



1906 A.B. Higginson
1908 Ray & Higginson
1910 E. Russell Ray
1912 Ray & Soule
1917 Winsor Soule

Henry Howell 1920
Edwards, Plunkett & Howell 1927
Henry Howell 1929
Howell & Arendt 1946

LARGE MERGE

1921 Soule, Murphy & Hastings
1931 Soule & Murphy
1954 Soule & Mosher
1955 Glen Mosher

1956

Howell Arendt Mosher Grant

1959 Arendt Mosher Grant
1975 Arendt/Mosher/Grant/Pedersen/Phillips
1983 Grant Pedersen Phillips
1993 Grant Pedersen Phillips Metsch Sweeney
1995 Phillips Metsch Sweeney Moore

Kerr Beggs 1959
Kerr 1967
D. Stewart Kerr & Associates 1969
Kerr Hall Hurley Deutsch 1975
Hall Hurley Deutsch 1980

ACQUISITION

2004

Hall Hurley Deutsch
joins Phillips Metsch Sweeney Moore

2009

PMSM Architects

2015 DJW Architects
joins PMSM Architects

2018

19six Architects

2020 MADI Group
joins 19six Architects

2021 Ehlen Spiess & Haight Structural Engineers
joins 19six Architects



19·6
ARCHITECTS

PROVEN TEAM



ALAN KROEKER
SENIOR PRINCIPAL
COMMUNITY ENGAGEMENT



MONISHA ADNANI
PRINCIPAL THEATER & STUDENT
UNION DESIGN



MARIANA ALVAREZ-PARGA
PRINCIPAL-IN-CHARGE
MAIN CONTACT



JEFFREY HAIGHT
PRINCIPAL
STRUCTURAL ENGINEER



ROSA ALVARADO
PRINCIPAL
WELLNESS CENTER DESIGN



QUINN PULLEN
ARCHITECT \ CIVIL ENGINEER



DANIEL VILLARREAL
PROJECT MANAGER /
DOCUMENTATION &
COORDINATION



HENRICK MALINOWSKI
PROJECT ARCHITECT /
CONSTRUCTIBILITY REVIEW



ZAHRA MALEKLOO
DESIGNER / JOB CAPTAIN



MELISSA SCHRAMM
INTERIOR DESIGNER /
FF&E SPECIALIST



KAILA SISON
DOCUMENTATION



MARTIN BLANCARTE
DOCUMENTATION



PROJECT SUPPORT
ETHEL QUEBRAL
DOCUMENTATION



AIMEE MERCEDES
CA SUPPORT



STEPHEN KING
SPECIFICATIONS & CA SUPPORT

CONSULTANT TEAM

Civil Engineer
**CARROLL ENGINEERING
INC.**

Structural Engineer
**MIYAMOTO INTL
INNOVATIVE STRUCTURAL**

Mechanical Engineer
**SALAS O'BRIEN
CAPITAL ENGINEERING**

Electrical Engineer
ATIUM ENGINEERING

CONSULTANT TEAM

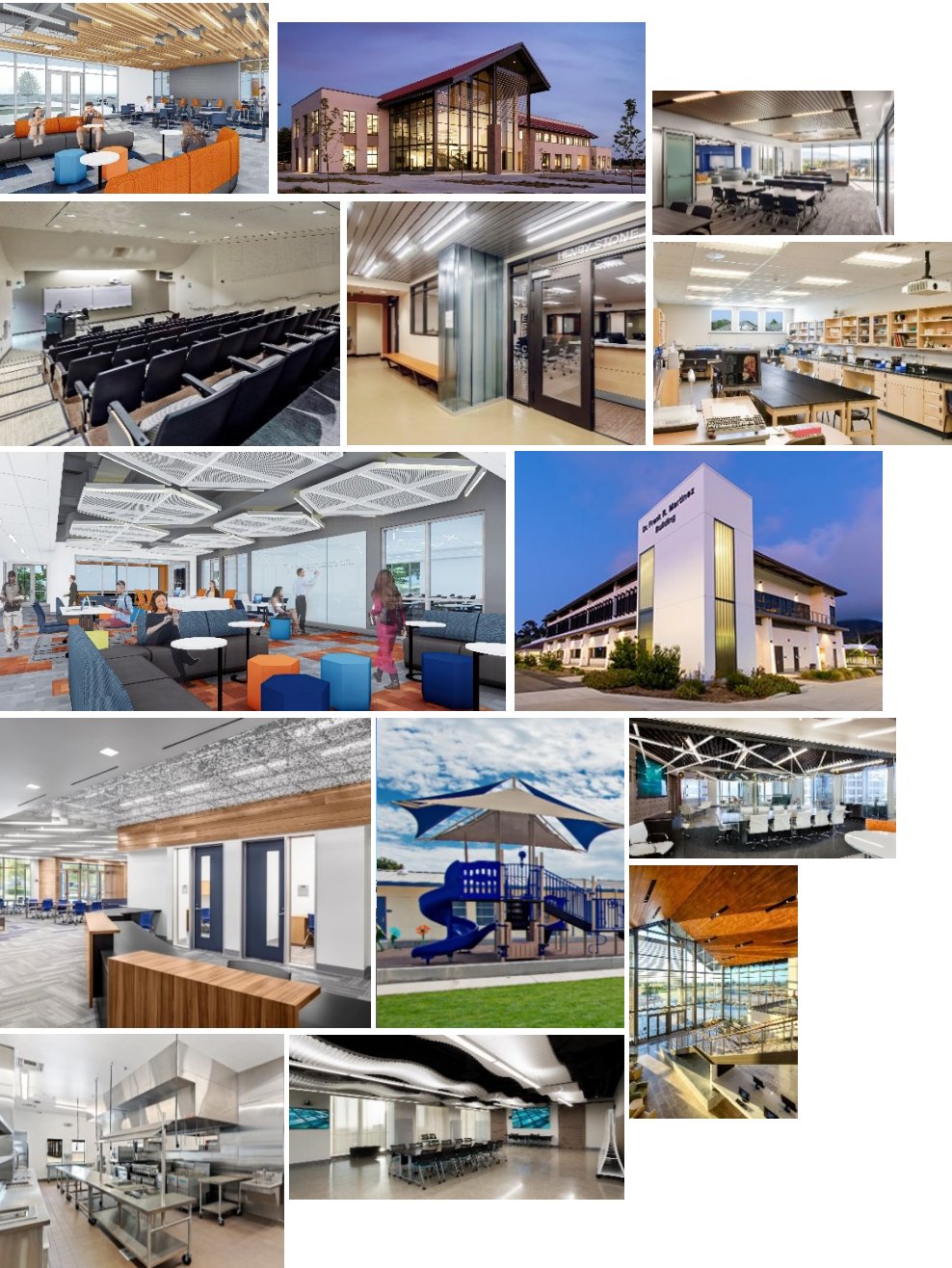
Acoustics/AV
SALTER

Food Service Design
AMD FOODSERVICE DESIGN

Technology & Fire-Life
Safety
KMM SERVICES INC.

Landscape Design
ANLA ASSOCIATES, INC.

Cost Estimator
SIERRA WEST GROUP



K-12 EXPERIENCE

- | | | |
|------------------------------|-------------------------------|-------------------------------|
| FAIRFIELD-SUISUN USD | NEW HAVEN USD | SAN JUAN USD |
| SOLANO COUNTY OE | PACIFIC ELEMENTARY SD | SAN LORENZO VALLEY USD |
| PITTSBURG USD | PAJARO VALLEY USD | SCOTTS VALLEY USD |
| EVERGREEN ESD | HOPE ELEMENTARY SD | SOLEDAD USD |
| FREMONT USD | BRIGGS ESD | LIVE OAK USD |
| SANTA CRUZ USD | MESA UNION ESD | SAN LUIS COASTAL USD |
| SOQUEL ESD | SANTA BARBARA USD | ATASCADERO USD |
| COVINA-VALLEY USD | GOLETA USD | TEMPLETON USD |
| EASTSIDE USD | SANTA YNEZ VALLEY UHSD | PASO ROBLES JOINT USD |
| EL TEJON USD | SOLVANG SD | MADERA USD |
| SIMI VALLEY USD | SANTA MARIA JOINT UHSD | OXNARD JOINT UHSD |
| OCEAN VIEW SD | SANTA MARIA-BONITA SD | SLO COUNTY OE |
| HUENEME ELEMENTARY SD | LUCIA MAR USD | |

COMMUNITY COLLEGE EXPERIENCE

- | | | |
|---------------------------|-----------------------------------|--------------------------|
| SOLANO COUNTY CCD | RANCHO SANTIAGO CCD | SANTA BARBARA CCD |
| GLENDALE CCD | DESERT CCD | ALLAN HANCOCK CCD |
| CHAFFEY CCD | MT SAN JACINTO CCD | STATE CENTER CCD |
| RIO HONDO CCD | SAN LUIS OBISPO CCD | |
| SAN BERNARDINO CCD | SAINT MARY'S COLLEGE OF CA | |
| RIVERSIDE CCD | KERN CCD | |

CLASSROOM
MODERNIZATIONS

196

Soquel Union Elementary School District
Soquel Elementary School New 2-Story Classroom

CLASSROOMS



SANTA CRUZ CITY SCHOOL DISTRICT
BRANCIFORTE SMALL SCHOOLS
NEW CLASSROOM



SOQUEL UNION ELEMENTARY SCHOOL DISTRICT
SOQUEL ELEMENTARY SCHOOL
NEW TWO-STORY CLASSROOM BUILDING



SANTA CRUZ CITY SCHOOLS DISTRICT
SOQUEL HIGH SCHOOL
CAMPUS WIDE MODERNIZATION



SOQUEL UNION ELEMENTARY SCHOOL DISTRICT
SANTA CRUZ GARDENS ELEMENTARY SCHOOL
NEW CLASSROOMS



FAIRFIELD- SUISUN UNIFIED SCHOOL DISTRICT
MARY BIRD EARLY CHILDHOOD EDUCATION
NEW CLASSROOM BUILDING & ADMIN



SOQUEL UNION ELEMENTARY SCHOOL DISTRICT
NEW BRIGHTON MIDDLE SCHOOL
MODERNIZATION

SCIENCE, CTE, and STEAM

19.6

Santa Cruz City Schools District
SOQUEL HIGH SCHOOL CAMPUS-WIDE MODERNIZATION

SCIENCE, CTE, and STEAM



SANTA YNEZ VALLEY UNION HIGH SCHOOL DISTRICT
SANTA YNEZ HIGH SCHOOL CULINARY
CTE CLASS MODERNIZATION



SANTA MARIA JOINT UNION HIGH SCHOOL DISTRICT
SANTA MARIA HIGH SCHOOL
CTE CENTER / AG FARM



FAIRFIELD-SUISUN UNIFIED SCHOOL DISTRICT
SUISUN VALLEY K-8 SCHOOL
NEW INNOVATION LAB



SANTA CRUZ CITY SCHOOLS DISTRICT
NEW BRIGHTON MIDDLE SCHOOL
NEW CTE AND DANCE CLASSROOM



SANTA CRUZ CITY SCHOOLS DISTRICT
NEW BRIGHTON MIDDLE SCHOOL
NEW CTE AND ART CLASSROOM



SANTA CRUZ CITY SCHOOLS DISTRICT
SOQUEL HIGH SCHOOL
SCIENCE MODERNIZATION

ADMINISTRATION, LIBRARY
and MEDIA CENTERS

196

Santa Cruz City Schools District
SOQUEL HIGH SCHOOL CAMPUS-WIDE MODERNIZATION

ADMINISTRATION, LIBRARY and MEDIA CENTERS



SANTA CRUZ CITY SCHOOLS DISTRICT
BAY VIEW ELEMENTARY SCHOOL
MODERNIZATION



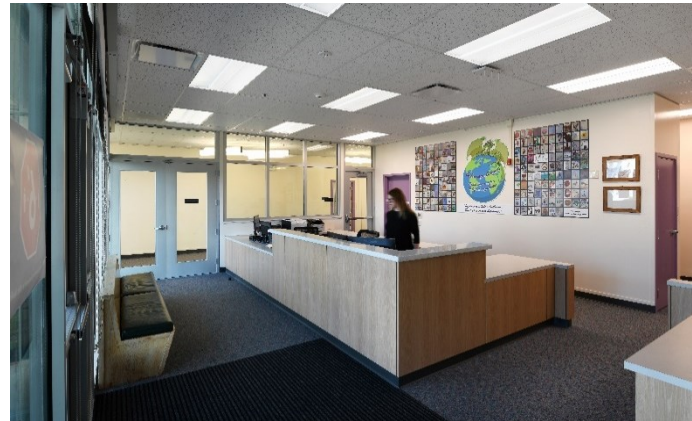
SANTA CRUZ CITY SCHOOLS DISTRICT
SOQUEL HIGH SCHOOL
LIBRARY/ADMIN MODERNIZATION



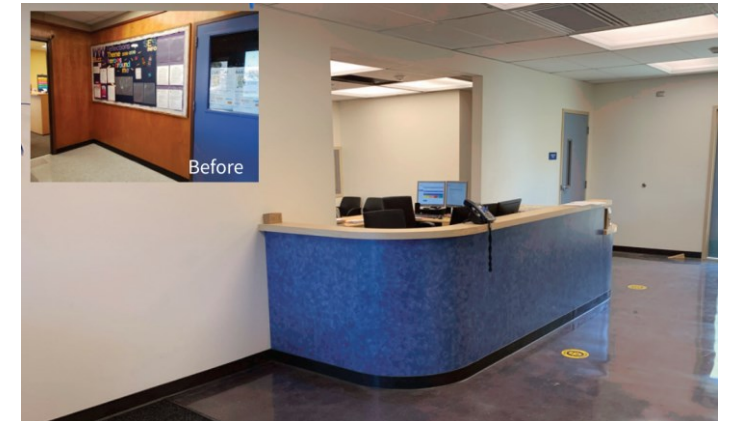
FAIRFIELD-SUISUN UNIFIED SCHOOL DISTRICT
SUISUN VALLEY K-8 ADMIN & LIBRARY BUILDING
NEW CONSTRUCTION



FAIRFIELD-SUISUN UNIFIED SCHOOL DISTRICT
PSA AT AMY BLANC LIBRARY
NEW CONSTRUCTION



SANTA CRUZ CITY SCHOOLS DISTRICT
DELAVEAGA ELEMENTARY SCHOOL
MODERNIZATION



FAIRFIELD-SUISUN UNIFIED SCHOOL DISTRICT
SUISUN ELEMENTARY SCHOOL
ADMIN MODERNIZATION

GYMNASIUMS,
MULTIPURPOSE ROOM,
and PERFORMING ARTS

196

Fairfield-Suisun Unified School District
PSA NEW GYMNASIUM & LIBRARY COMPLEX

GYMNASIUMS, MULTI-PURPOSE, and PERFORMING ARTS



FAIRFIELD-SUISUN UNIFIED SCHOOL DISTRICT
OAKBROOK VISUAL & PERFORMING ARTS
CENTER NEW CONSTRUCTION



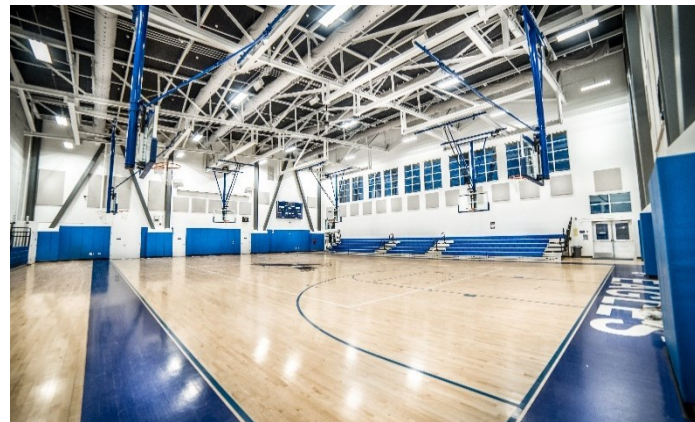
SOQUEL UNION ELEMENTARY SCHOOL DISTRICT
NEW BRIGHTON MS GYMNASIUM
MODERNIZATION & NEW CLASSROOMS



SAN LUIS OBISPO COMMUNITY COLLEGE DISTRICT
CUESTA COLLEGE CAMPUS CENTER
STUDENT CENTER



SANTA CRUZ CITY SCHOOL DISTRICT
NATURAL BRIDGES ES GYMNASIUM
MODERNIZATION



FAIRFIELD-SUISUN UNIFIED SCHOOL DISTRICT
PSA NEW GYMNASIUM & LIBRARY COMPLEX
NEW CONSTRUCTION



WILLIAM S. HART UNION HIGH SCHOOL DISTRICT
WEST RANCH & GOLDEN VALLEY HS PAC'S

PLAYGROUNDS, FIELDS,
and SITE IMPROVEMENTS

196

Santa Cruz City Schools District
BRANCIFORTE SMALL SCHOOLS NEW PLAYGROUND

PLAYGROUNDS, FIELDS, and SITE IMPROVEMENTS



FAIRFIELD-SUISUN UNIFIED SCHOOL DISTRICT
BAY VIEW ELEMENTARY SCHOOL
SITE IMPROVEMENT & WATER CONSERVATION



FAIRFIELD-SUISUN UNIFIED SCHOOL DISTRICT
SUISUN ELEMENTARY SCHOOL
PLAYGROUNDS & SHADE STRUCTURE



FAIRFIELD-SUISUN UNIFIED SCHOOL DISTRICT
DOVER ELEMENTARY SCHOOL
NEW DROP-OFF AREA & PARKING LOT



FAIRFIELD-SUISUN UNIFIED SCHOOL DISTRICT
SUISUN ELEMENTARY SCHOOL ADMIN
MODERNIZATION & SITE IMPROVEMENTS



LIVE OAK SCHOOL DISTRICT
SHORELINE MIDDLE SCHOOL ATHLETIC FIELD
IMPROVEMENTS & MODERNIZATION



SANTA CRUZ CITY SCHOOLS DISTRICT
BRANCFORTE SMALL SCHOOLS PLAYGROUND
NEW CONSTRUCTION

CLIENT CONCERNS

What keeps you up at night?

196

DESIGN FOR ALL

- Inclusive Design Process
- Innovative Designs Tied to the Architectural Fabric of the Campus
- Flexible Design Spaces
- Tailor Design to Different Learning Methods
- Empathic Design through Persona Mapping process.
- Safety and Security
- Transparency
- Technology for Future Expansion

PROJECT MANAGEMENT

- Weekly Project Updates
- Program Follow Through
- Meeting Schedule
- Work with DSA

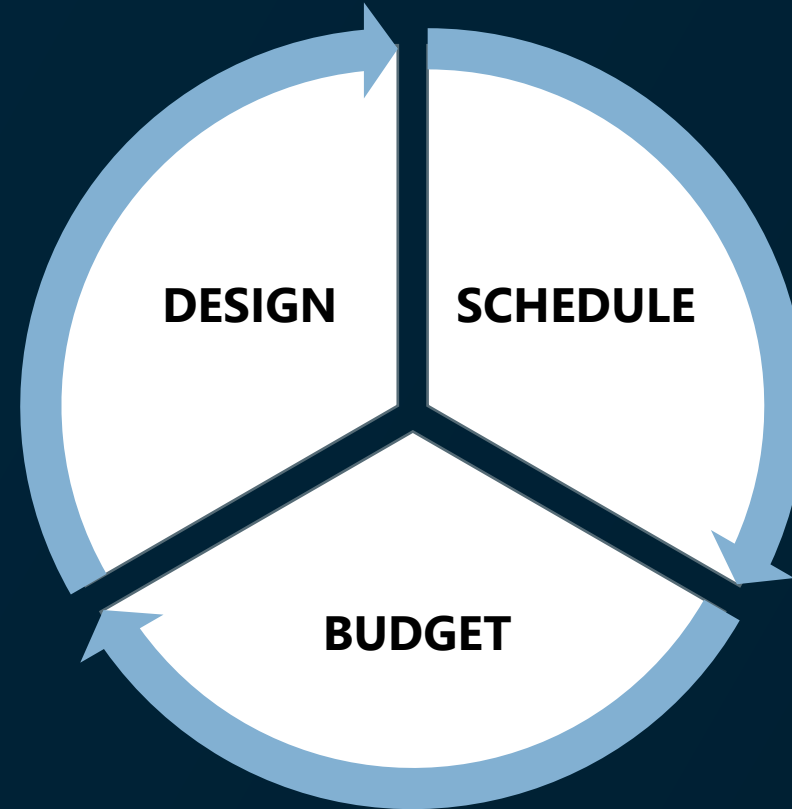
BUDGET & SCHEDULE

- Interrelationship
- Verification and Coordination with Steering Committee

CONSTRUCTION ADMINISTRATION

- Team Approach
- Firm Procedures

PROJECT CLOSEOUT



MEETING BUDGETS

196

COST MANAGEMENT & MEETING BUDGETS

- Transparent and Frank Conversations
- Experienced/Seasoned Team
- Simple, Elegant Design
- Buildable
- An Independent Cost Estimator
- Working Collaboratively w/Contractor & Inspector
- Construction Administrator / Represent the District's Interest

DOCUMENT PRODUCTION

- Thorough Documentation
- Intact Team From Start to Finish
 - Revit & BIM Standards
- Bluebeam Sessions (cloud-based)
 - Site Due Diligence and Testing
 - Experienced Consultant Team
- Mentoring & Continued Education

196

QUALITY CONTROL

- Cross Discipline & Peer Review
- Page-Turn Meetings with Facilities and M&O
 - Review of Drawings and Specifications

196



QUALITY CONTROL 196

- Project Check List for key milestone deliverables
 - Blue Beam session
 - BIM 360 integration and Clash Detection

QUALITY CONTROL 19.6

- Project Check List for key milestone deliverables
 - Blue Beam session
- BIM 360 integration and Clash Detection



QUALITY CONTROL

- **Project Progress Review**
 - Consultant Coordination meetings
 - Individual meetings with Consultants
 - Monday check in with Project Team
- **Specifications**
 - Early start
 - SpecLink Cloud platform
 - MasterFormat 2020

196

QUALITY CONTROL

- Mentoring
 - Lessons Learned
- Measure of success

196

WHY OUR TEAM

Passion for Education

Architecture

Interior Design

Projects that Enrich the Community

Experience & Expertise

Relevant Project Experience

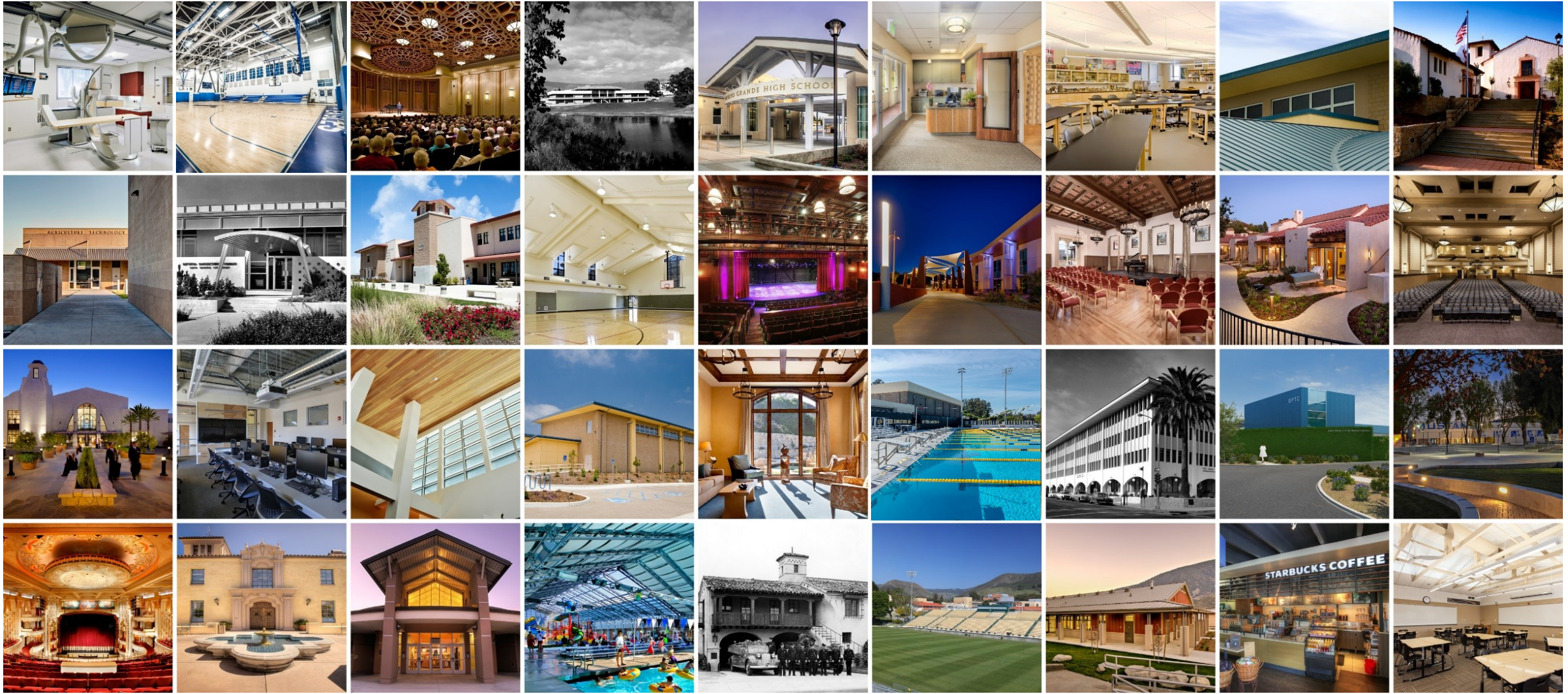
Local Commitment

Stakeholder Outreach

Consensus Building

19six team is always focused on customer satisfaction and never brings ideas to the team which will exceed the budget. The firm focuses on each district representative, from maintenance to educational services, to make sure we have the perfect blend of needs within the project. They often push us to continue to reach for ideas, even when we think we are satisfied. When they bring a design to Cabinet, I know it fits within our budget and can be trusted. Unfortunately, with many other architectural teams, this has not held true.

*Kris Corey, Superintendent,
Fairfield-Suisun Unified School District*



DEDICATED TO PROJECTS THAT ENRICH THE COMMUNITY

THANK YOU

P L A N N I N G

Consensus Building: A 5-Step Methodology

1

ESTABLISH DISTRICT, SCHOOL, & COMMUNITY PARTICIPATION

Who should participate and at what point in the process?

2

DEFINE EXPECTATIONS

Identify project parameters, restraints and opportunities as the basis of design.

3

DEVELOP DESIGN OPTIONS

Evaluate, develop and recommend options and design solutions based on Mount Diablo Unified School District's needs and budget.

4

PRIORITIZATION & DECISION-MAKING

Facilitate and guide the decision-making process to maximize the benefits for the project, district, and community.

5

TRANSPARENCY & COMMUNICATION

Communicate openly, honestly and publicly. Document the decision-making process to create support for the project.

COLLABORATION

PARAMETERS

EVALUATION

PRIORITIZATION

COMMUNICATION

196

PUBLIC AGENCY EXPERIENCE

- DSA
- Office of Public School Construction (OPSC)
- California Department of Education (CDE)
- California Geological Survey (CGS)
- Local Fire Department
- City Public Works
- County Health Department
- SCE and PG&E
- City Planning Department