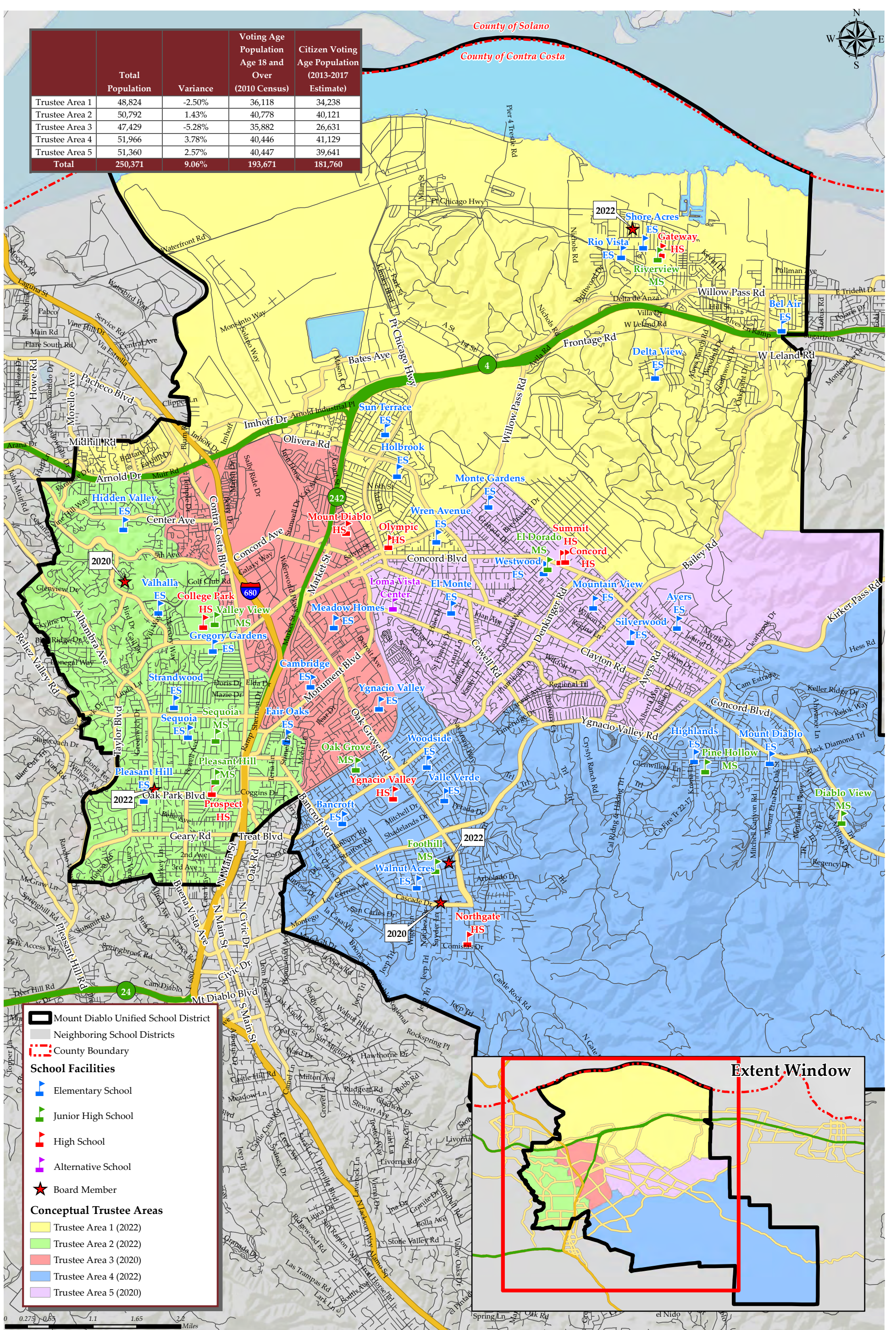


MT DIABLO UNIFIED SCHOOL DISTRICT CONCEPTUAL TRUSTEE AREAS - SCENARIO PURPLE

	Total Population	Variance	Voting Age Population Age 18 and Over (2010 Census)	Citizen Voting Age Population (2013-2017 Estimate)
Trustee Area 1	48,824	-2.50%	36,118	34,238
Trustee Area 2	50,792	1.43%	40,778	40,121
Trustee Area 3	47,429	-5.28%	35,882	26,631
Trustee Area 4	51,966	3.78%	40,446	41,129
Trustee Area 5	51,360	2.57%	40,447	39,641
Total	250,371	9.06%	193,671	181,760



Legend

- Mount Diablo Unified School District
- Neighboring School Districts
- County Boundary
- School Facilities**
 - Elementary School
 - Junior High School
 - High School
 - Alternative School
 - Board Member
- Conceptual Trustee Areas**
 - Trustee Area 1 (2022)
 - Trustee Area 2 (2022)
 - Trustee Area 3 (2020)
 - Trustee Area 4 (2022)
 - Trustee Area 5 (2020)

0 0.275 0.55 1.1 1.65 2.2 Miles
September 2019

MT DIABLO UNIFIED SCHOOL DISTRICT
CONCEPTUAL TRUSTEE AREAS - SCENARIO PURPLE

Total Population (2010 Census)						
	Trustee Area 1	Trustee Area 2	Trustee Area 3	Trustee Area 4	Trustee Area 5	Variance
Population	48,824	50,792	47,429	51,966	51,360	
Population Variance	-1,250	718	-2,645	1,892	1,286	
	-2.50%	1.43%	-5.28%	3.78%	2.57%	9.06%
Hispanic/Latino	18,530	6,012	21,733	4,855	10,160	
	37.95%	11.84%	45.82%	9.34%	19.78%	
White	17,017	35,289	16,676	37,391	31,087	
	34.85%	69.48%	35.16%	71.95%	60.53%	
Black/ African American	3,877	1,026	2,028	754	1,332	
	7.94%	2.02%	4.28%	1.45%	2.59%	
American Indian/ Alaska Native	176	119	135	120	159	
	0.36%	0.23%	0.28%	0.23%	0.31%	
Asian	6,993	6,138	4,859	6,630	6,092	
	14.32%	12.08%	10.24%	12.76%	11.86%	
Native Hawaiian/ Other Pacific Islander	354	77	355	113	215	
	0.73%	0.15%	0.75%	0.22%	0.42%	
Other	131	91	105	141	137	
	0.27%	0.18%	0.22%	0.27%	0.27%	
Two or More Races	1,746	2,040	1,538	1,962	2,178	
	3.58%	4.02%	3.24%	3.78%	4.24%	

Population 18 and Over (2010 Census)						
	Trustee Area 1	Trustee Area 2	Trustee Area 3	Trustee Area 4	Trustee Area 5	
Population	36,118	40,778	35,882	40,446	40,447	
Population Variance	-2,616	2,044	-2,852	1,712	1,713	
	-6.75%	5.28%	-7.36%	4.42%	4.42%	
Hispanic/Latino	11,937	4,190	14,407	3,299	6,887	
	33.05%	10.28%	40.15%	8.16%	17.03%	
White	14,343	29,237	14,450	30,065	25,909	
	39.71%	71.70%	40.27%	74.33%	64.06%	
Black/ African American	2,777	765	1,548	606	1,026	
	7.69%	1.88%	4.31%	1.50%	2.54%	
American Indian/ Alaska Native	152	107	108	87	130	
	0.42%	0.26%	0.30%	0.22%	0.32%	
Asian	5,564	5,249	4,091	5,268	4,997	
	15.41%	12.87%	11.40%	13.02%	12.35%	
Native Hawaiian/ Other Pacific Islander	247	61	252	88	162	
	0.68%	0.15%	0.70%	0.22%	0.40%	
Other	92	64	72	84	93	
	0.25%	0.16%	0.20%	0.21%	0.23%	
Two or More Races	1,006	1,105	954	949	1,243	
	2.79%	2.71%	2.66%	2.35%	3.07%	

Citizens by Voting Age Population Estimate (2013-2017)						
	Trustee Area 1	Trustee Area 2	Trustee Area 3	Trustee Area 4	Trustee Area 5	
Population	34,238	40,121	26,631	41,129	39,641	
Population Variance	-2,114	3,769	-9,721	4,777	3,289	
	-5.82%	10.37%	-26.74%	13.14%	9.05%	
Hispanic/Latino	8,962	3,955	6,796	3,812	6,244	
	26.18%	9.86%	25.52%	9.27%	15.75%	
White	14,593	29,381	13,253	30,527	25,952	
	42.62%	73.23%	49.77%	74.22%	65.47%	
Black/ African American	3,208	1,098	1,755	557	1,642	
	9.37%	2.74%	6.59%	1.35%	4.14%	
American Indian/ Alaska Native	153	70	58	95	88	
	0.45%	0.17%	0.22%	0.23%	0.22%	
Asian	5,808	3,834	3,485	4,870	4,242	
	16.96%	9.56%	13.09%	11.84%	10.70%	
Native Hawaiian/ Other Pacific Islander	255	197	84	70	120	
	0.74%	0.49%	0.32%	0.17%	0.30%	
Other	0	0	0	0	0	
	0.00%	0.00%	0.00%	0.00%	0.00%	
Two or More Races	1,259	1,586	1,200	1,198	1,353	
	3.68%	3.95%	4.51%	2.91%	3.41%	

ACS Age Groups (2017 Estimates) ^[1]						
	Trustee Area 1	Trustee Area 2	Trustee Area 3	Trustee Area 4	Trustee Area 5	
Under 18 Years Old	24.57%	18.69%	23.45%	21.58%	20.02%	
18-24 Years Old	10.23%	7.55%	8.36%	6.10%	7.64%	
25-34 Years Old	14.62%	14.19%	19.57%	9.79%	14.78%	
35-54 Years Old	27.82%	27.62%	27.63%	27.16%	26.71%	
55-64 Years Old	12.65%	14.79%	11.01%	15.22%	14.29%	
Over 64 Years Old	10.11%	17.16%	9.98%	20.15%	16.56%	
Total	100.00%	100.00%	100.00%	100.00%	100.00%	

ACS Renters vs Owners (2017 Estimates) ^[1]						
	Trustee Area 1	Trustee Area 2	Trustee Area 3	Trustee Area 4	Trustee Area 5	
Total Owners	60.76%	61.20%	38.91%	81.84%	68.76%	
Total Renters	39.24%	38.80%	61.09%	18.16%	31.24%	
Total	100.00%	100.00%	100.00%	100.00%	100.00%	

ACS Profile Income by Household (2017 Estimates) ^[1]						
	Trustee Area 1	Trustee Area 2	Trustee Area 3	Trustee Area 4	Trustee Area 5	
Income \$0-25k	17.90%	11.84%	19.21%	7.38%	11.07%	
Income \$25-50k	19.68%	11.23%	24.02%	10.06%	14.89%	
Income \$50-100k	30.72%	25.33%	31.68%	23.10%	31.06%	
Income \$100-150k	16.13%	22.54%	16.30%	18.69%	25.08%	
Income \$150k+	15.57%	29.06%	8.79%	40.77%	17.90%	
Total	100.00%	100.00%	100.00%	100.00%	100.00%	

[1] Based off estimates prepared by the Census Bureau

School Boundaries						
	Trustee Area 1	Trustee Area 2	Trustee Area 3	Trustee Area 4	Trustee Area 5	
School Boundaries	Ayers ES	Fair Oaks ES	Cambridge ES	Ayers ES	Ayers ES	
	Bel Air ES	Gregory Gardens ES	El Monte ES	Bancroft ES	El Monte ES	
	Delta View ES	Hidden Valley ES	Fair Oaks ES	Highlands ES	Highlands ES	
	Halbrook ES	Pleasant Hill ES	Gregory Gardens ES	Mt. Diablo ES	Monte Gardens ES	
	Hidden Valley ES	Strandwood ES	Hidden Valley ES	Valle Verde ES	Mountain View ES	
	Monte Gardens ES	Valhalla ES	Holbrook ES	Walnut Acres ES	Silverwood ES	
	Mountain View ES	Pleasant Hill MS	Meadow Homes ES	Woodside ES	Westwood ES	
	Rio Vista ES	Valley View MS	Sun Terrace ES	Foothill MS	Woodside ES	
	Shores Acres ES	College Park HS	Wren Avenue ES	Oak Grove MS	Wren Avenue ES	
	Sun Terrace ES	Ygnacio Valley HS	Ygnacio Valley ES	Pine Hollow MS	El Dorado MS	
	West Wood ES		El Dorado MS	Choice HS	Foothill MS	
	Wren Avenue ES		Oak Grove MS	Northgate HS	Oak Grove MS	
	El Dorado MS		Pleasant Hill MS	Ygnacio Valley HS	Pine Hollow MS	
	Pine Hollow MS		Valley View MS		Choice HS	
	Riverview MS		College Park HS		Concord HS	
	Valley View MS		Mt. Diablo HS		Mt. Diablo HS	
	Choice HS		Ygnacio Valley HS		Northgate HS	
	College Park HS				Ygnacio Valley ES	
	Concord HS					
	Mt. Diablo HS					