



MT. DIABLO UNIFIED SCHOOL DISTRICT

HED

INTERVIEW for A/E SERVICES RFQ NO. 1912

INTRODUCTIONS

HED

Your Interview Team



Mary
Ruppenthal
PRINCIPAL-IN-CHARGE &
PRIMARY ARCHITECT



Rob
Filary
PRE K-12 MARKET
SECTOR LEADERSHIP &
DESIGN LEADER



Scott
Berge
PROJECT
MANAGER

Project Support Team



Erwin
Lee
PRE K-12 MARKET
SECTOR LEADERSHIP



Mike
Myers
ARCHITECT OF RECORD /
CONSTRUCTION ADMIN.



Juan
Pagan
PROJECT DESIGNER



Lien
Pham
PROJECT ARCHITECT

Project Support Team



How can we help advance Mt. Diablo USD?

- **A partner and collaborator that can help you achieve your goals of upgrading existing and adding new educational facilities.**
- **A seasoned, expert team that can realize your projects efficiently on time and on budget.**
- **Creative collaborators that will realize your vision and create new facilities befitting of a vibrant community.**

HED brings the experience, skillsets, drive and commitment to realize your goals for Mt. Diablo Unified School District. We offer a VALUE-BASED DESIGN APPROACH that will help take you to the next level and exceed your expectations.

Advancing Your World.

It is our promise that through the **Positive Impact** of design, our teams create exceptional, sustainable solutions for our clients, the community, and the world.

About HED



AIA 2030

Commitment for All
New Projects to Be
Carbon Neutral by 2030



400+

Staff Members

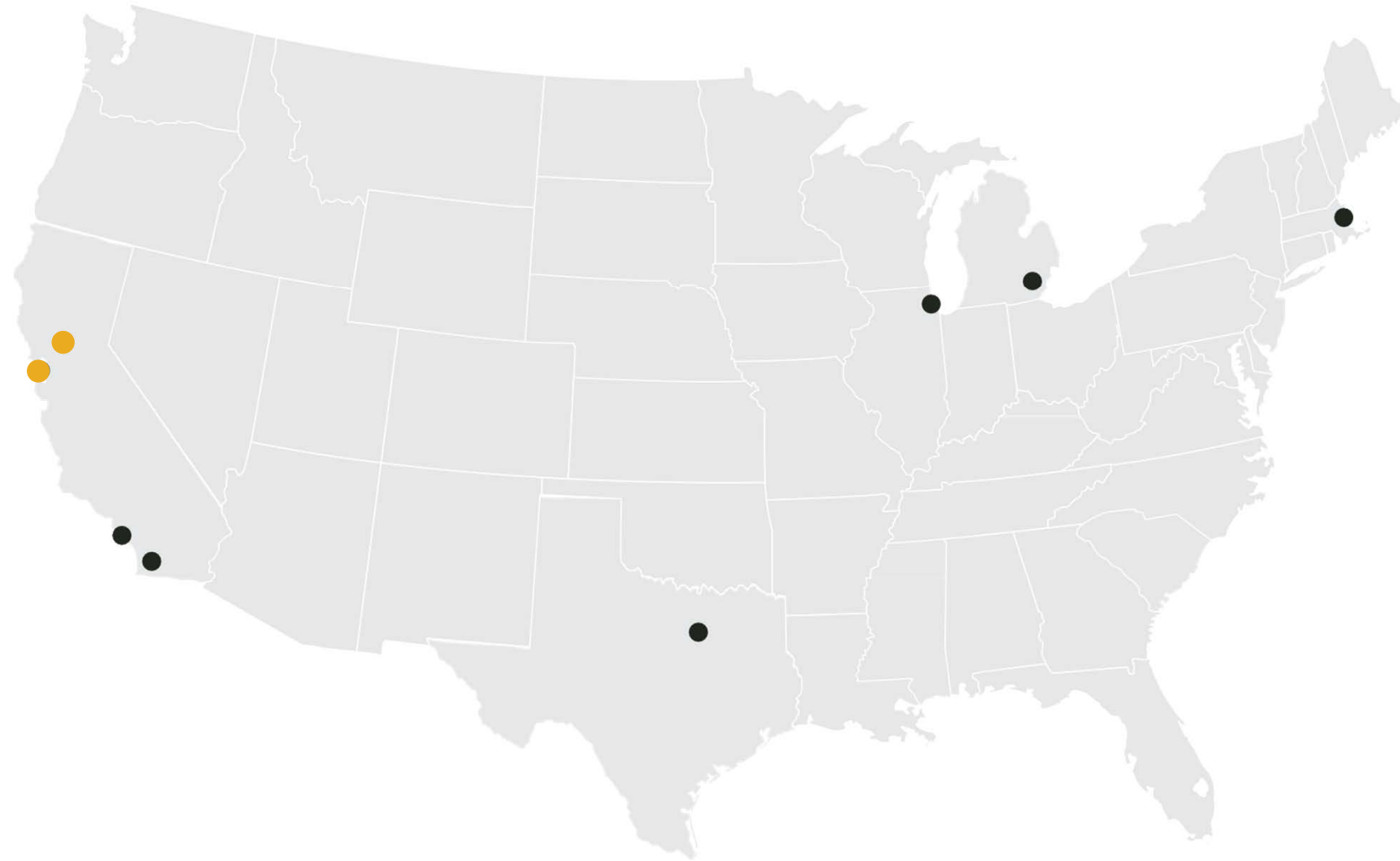


8.3M

Total CHPS & LEED
Certified
Square Feet

Just.

Label 2022 Certified



Office Locations

- Boston
- Chicago
- Dallas
- Detroit
- Los Angeles
- Sacramento**
- San Diego
- San Francisco**

Market Sectors

- Community and Civic
- Government (Federal)
- Healthcare
- Higher Education
- Housing and Mixed-Use
- Mission Critical
- Pre K-12**
- Science
- Transportation,
Manufacturing and
Product Development
- Workplace

Planning Services

- Master Planning
- Urban Planning
- Laboratory Planning

Architecture and Design

- Architecture
- Experiential Graphics
- Interior
- Landscape

Engineering Services

- Electrical
- Mechanical and Plumbing
- Structural
- ICT Information and
Communications
Technology

Consulting Services

- Sustainable Design
- Net Zero

HED

**PAST
PRESENT
FUTURE**

HED

Where YOU Have Been



FACILITIES MASTER PLAN
MT. DIABLO UNIFIED SCHOOL DISTRICT

[Home](#)

[Process](#)

[Planning](#)

[Vision](#)

[Assessments](#)

[Implementation](#)

MT. DIABLO UNIFIED SCHOOL DISTRICT FACILITIES MASTER PLAN 2018



PROCESS



PLANNING



VISION



ASSESSMENTS



IMPLEMENTATION

Where WE Have Been

Covid-19 impacts all aspects of society

Education



1.6bn

students out
of school

Climate



-30%

investment in clean
energy transition

Poverty



+251m

people pushed into
poverty by 2030

Source: ACT-Accelerator Plan and Investment Opportunity presentation.
Data from the World Bank, market intelligence and the United Nations.
<https://www.who.int/publications/m/item/act-accelerator-plan-and-investment-opportunity-presentation>
SDG Integration: <https://sdgintegration.undp.org/accelerating-development-progressduring-covid-19>

Where WE are Today



Engagement Exercise

Stop, collaborate and listen.

HED

Engagement Exercise

Stop, collaborate and listen.
-Vanilla Ice

HED

Question 1

Challenges and Fears

Relative to the next steps in the process, what do you see as the biggest challenges and what are your greatest fears?

What keeps you up at night?



Question 2

Hopes and Aspirations

What are some of your dreams, hopes and aspirations for future projects?

What does success look like to you?



POSITIVE IMPACT

HED



HED

Early Childhood Development Center



Carlos Santana Arts Academy

Fun!!!!

- After the past couple of years, let's return to good old-fashioned fun



Mill Valley SD Edna Maguire Elementary School

Connection to Nature

- It is in our DNA
- Biophilic Design & Wellbeing
- Outdoor Learning Opportunities
- Views, Daylighting, Discovery
- Natural Ventilation



HED

Santa Monica High School Discovery Building



Flintridge Preparatory Collaboration Building

Flexible Spaces

- Open Building Concepts
- Ensure Learning can happen outside the Classroom
- Provide Choice/ Give Students Ownership of their Environments
- Flexible Furniture
- Embrace Digital Options



HED

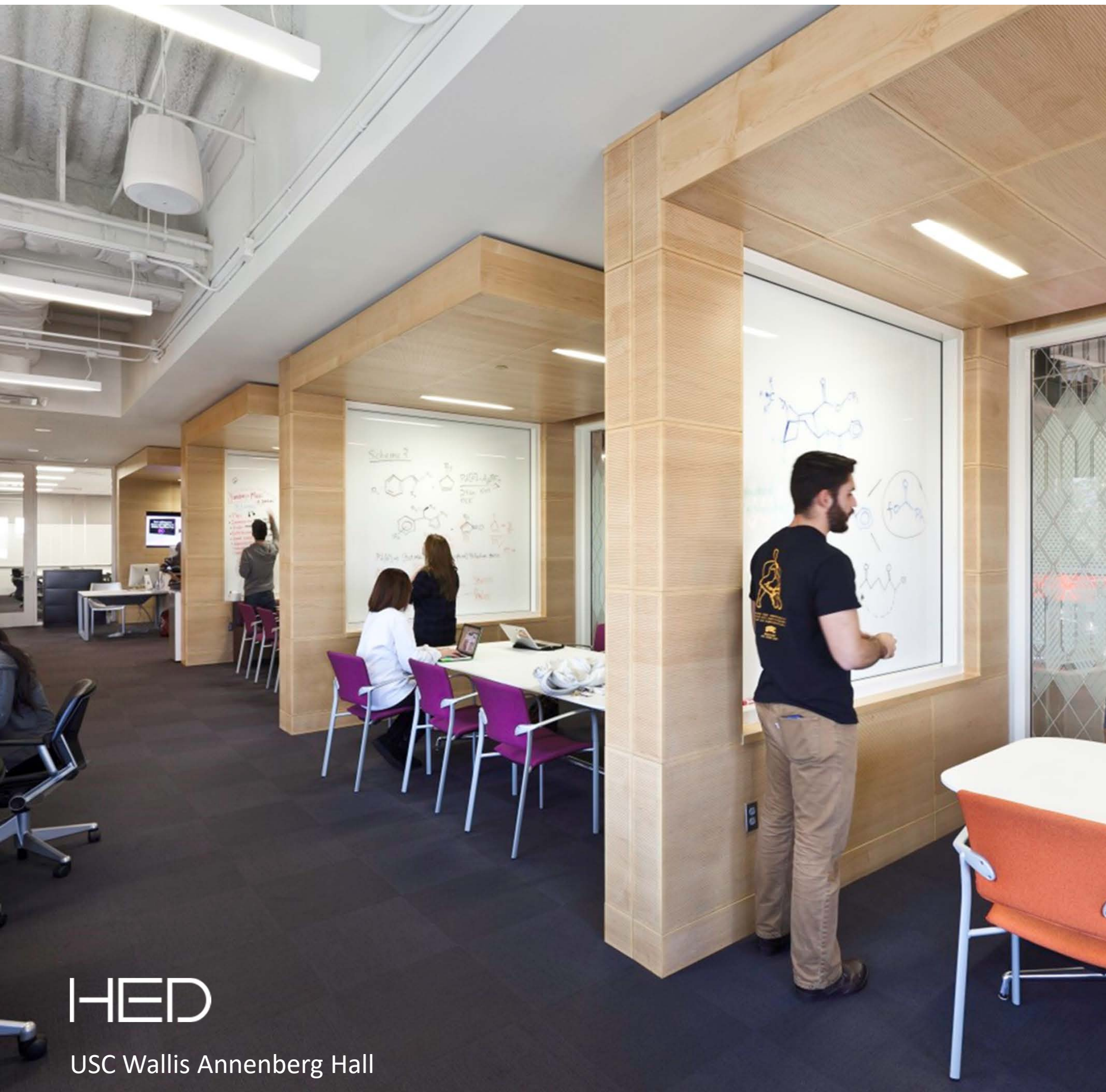
Santana High School Administration Building Modernization



Flintridge Preparatory School
Collaboration Building

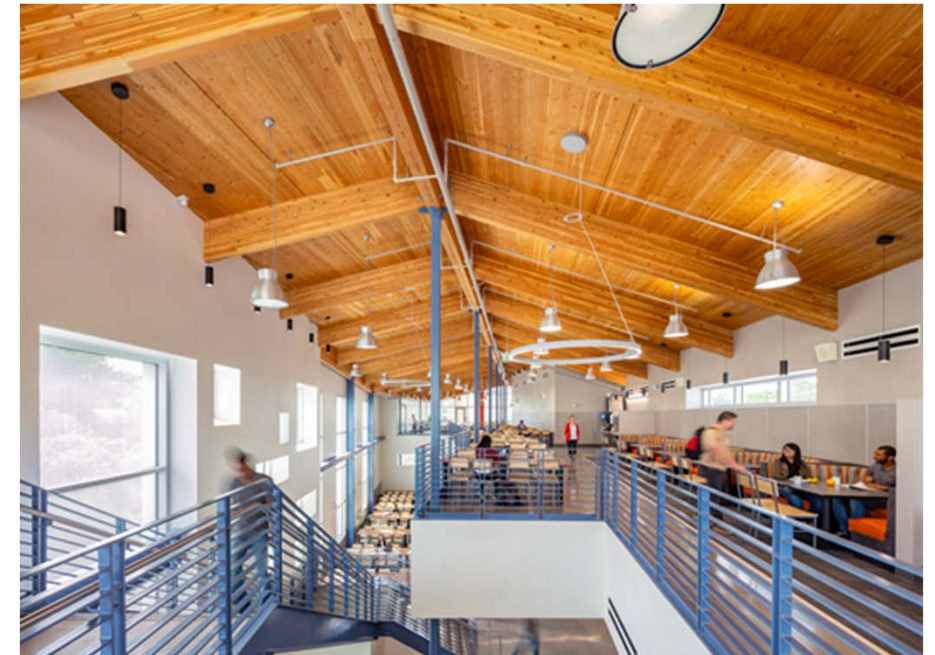
Safety & Security – Relational Safety:

- Clear Site Organization
- Natural Surveillance through Lines of Sight
- Access Point Management
- Defined Boundaries



HED

USC Wallis Annenberg Hall



UC Davis Latitude Student Commons

Higher Education Inspiration

- Extremely Collaborative Environments
- High School College Preparatory
- Student Unions
- Student Pride and Engagement

Sustainability Highlights



8M

TOTAL LEED CERTIFIED
SQUARE FEET



2

AIA COTE TOP 10
AWARDS



3.1M

SQUARE FEET PENDING
LEED CERTIFICATION



80+

LEED CERTIFIED
PROJECTS



AIA 2030

COMMITMENT FOR ALL
NEW PROJECTS TO BE
CARBON NEUTRAL BY 2030

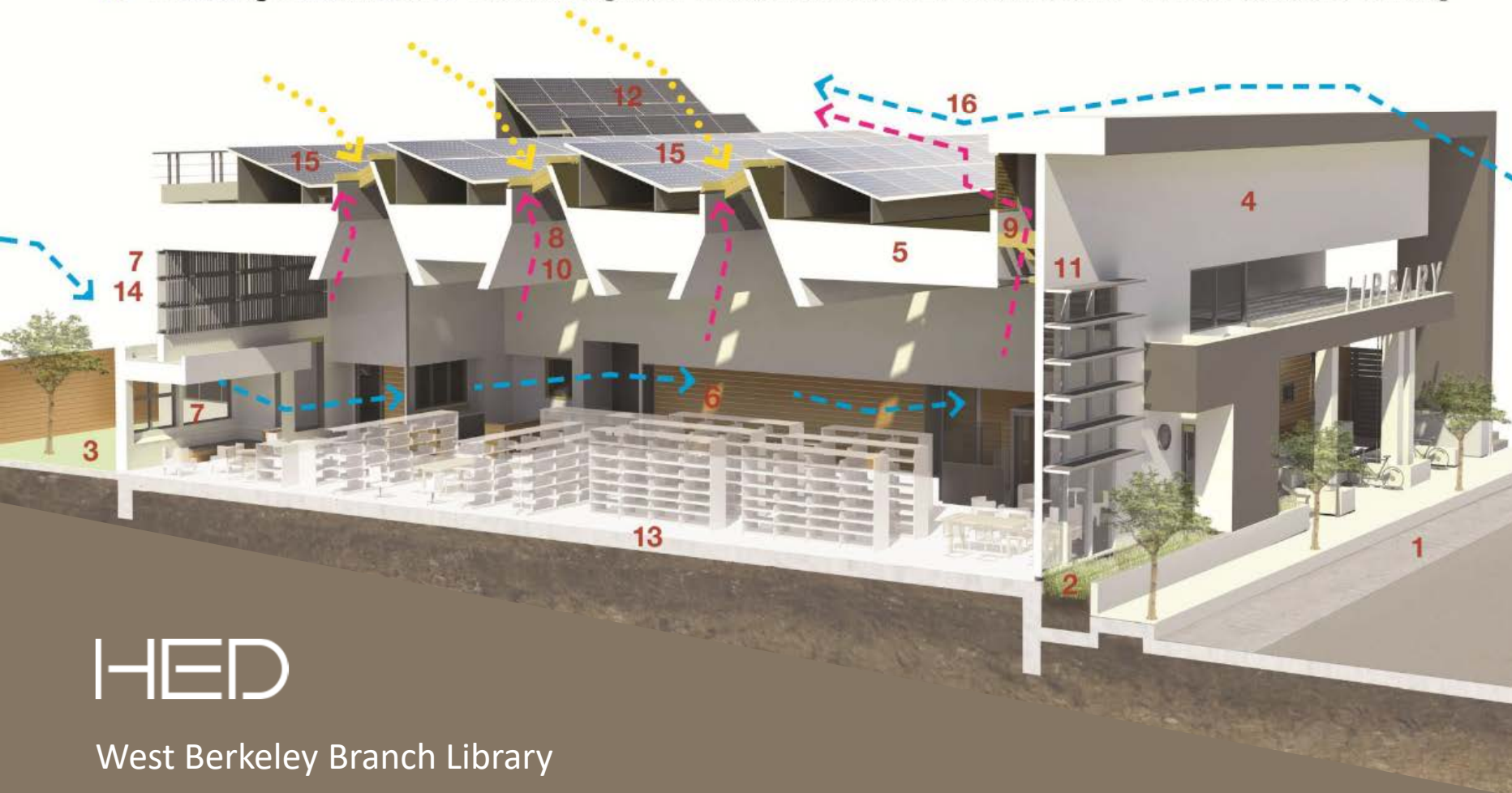


118

LEED / WELL CERTIFIED
PROFESSIONALS
(40% OF PROFESSIONAL STAFF)

Sustainable Design Strategies

- 1 **Site Selection** Urban Site, No Onsite Parking, Promotes Public Transportation
- 2 **Storm Water Technology** Gardens and Low Flow Planters
- 3 **Native Trees and Planting** Ecological Education Opportunities
- 4 **Building Materials** Thermal Efficient High Performance Rain Screen - R31
- 5 **Building Materials** Thermal Efficient Cool Roof - R40
- 6 **Building Materials** FSC Certified Wood - 97%
- 7 **Natural Ventilation** Operable Windows for Air Intake
- 8 **Natural Ventilation** Venting Skylights for Air Exhaust
- 9 **Natural Ventilation** Wind Chimney for Air Exhaust - Stack Ventilation / Bernoulli Concepts
- 10 **Daylighting** Operable Skylights
- 11 **Daylighting** Sunshading for Direct Southern Light
- 12 **Daylighting** Vertical Shading / No Shading for Diffuse Northern Light
- 13 **Solar Thermal** Panels Supplying Radiant Floor and Runtal Radiators
- 14 **Solar Thermal** Runtal Radiators
- 15 **Energy Generation** PV Panels - Feed back to Grid
- 16 **Prevailing Ocean Breeze** Creates Negative Pressure at Backside of Front Facade - Pulls Air out of the Building



HED

West Berkeley Branch Library



Environmental Stewardship

- Zero Net Energy Design Leaders
- Lower Operating Costs
- AIA 2030 Commitment

YOUR FMP PROJECTS AND HED CASE STUDIES

HED

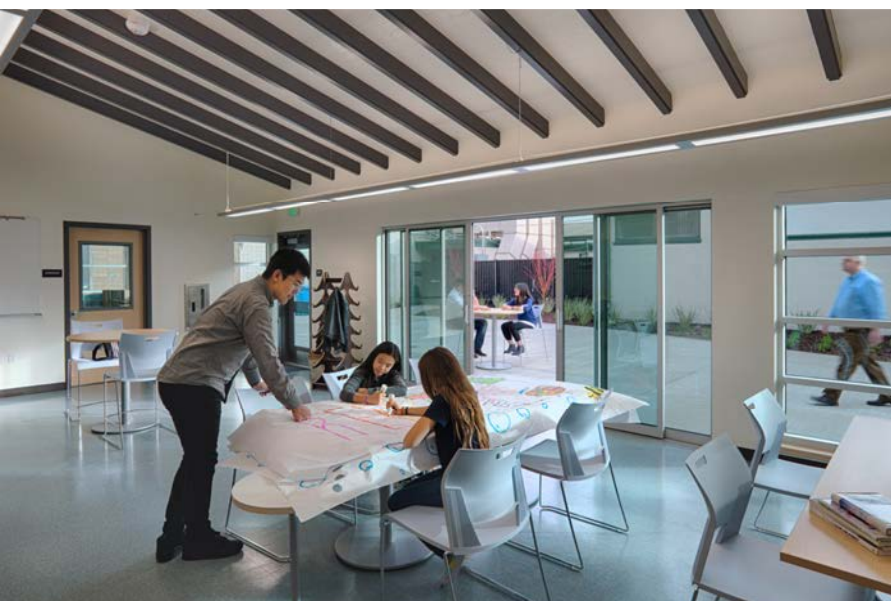
Your FMP PROJECTS:

- Improved Dropoff/Entry/Admin/Parking
- Safety and Security
- Pre-K/TK/K and Play Areas
- Teacher Collabs + Learning Centers + Media Centers
- Music + STEAM + Innovation Labs
- Community Rooms
- Special Day Classrooms
- Administration
- Outdoor Learning Courts
- Shade Structures
- Playfields
- Variety of Classroom and Support Spaces
- Student Union, Gym, Theater, Sports Facilities

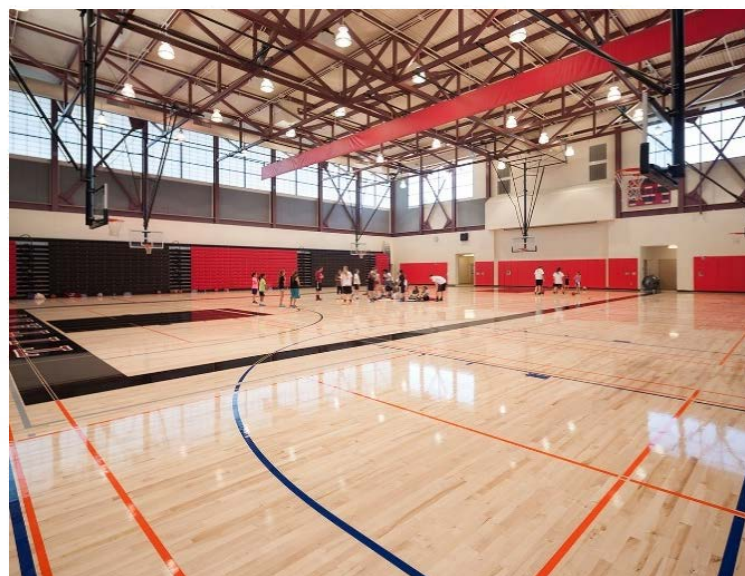
Childhood Development Facilities



Elementary and Middle School Facilities



High School Facilities



Redwood City School District

Garfield ES Community School

- Full Campus Modernization
- New Library and Classroom Building
- New Amphitheater and Central Campus Courtyard
- New construction to connect disparate portions of site and create new "heart" of campus.

HED





Garfield ES Community School Classroom & Library Building

- 2-Story Classroom & Library Building
- Library connects with courtyard and rest of campus
- New lunch shelter incorporated into building canopy
- New multi-use amphitheater for both school and community
- Library and plaza oriented to tie existing and new together



2 AXONOMETRIC VIEW: LEVEL 02



3 AXONOMETRIC VIEW: ROOF LEVEL

Redwood City School District

Kennedy Middle School

- Full Campus Modernization
- New Administration & Family Center
- New Identifiable Dropoff and Entry to Campus
- Creating a welcoming front door for a diverse community

HED





Kennedy Middle School Admin & Family Center Building

- Resource space for students, families and community members
- Administrative & Workspaces
- Existing Admin Office converted to Classrooms
- Holistic approach to community engagement and student support. Family Center provides services and counseling for those who need it.



San Mateo-Foster City Unified School District

Bowditch Middle School

- Campus Master Plan
- District Parity
- New Gym and Academic Core
- New Frontage and Neighborhood Presence
- Modernization

HED





Bowditch Middle School Biophilia in Schools

- Restorative Benefits
- Enhanced Creativity
- Improves Cognitive Function and Productivity
- Increased Memory and Concentration
- Reduces Boredom, Stress, and Aggression

HED

San Rafael City Schools

Terra Linda High School

- Re-envisioned the Master Plan
- Created a new heart to the campus with the Student Commons
- Reallocated the existing library into a CTE Academy





Terra Linda High School Student Commons

- Media Center
- Cafeteria/Kitchen
- Fabrication Lab Classroom
- Music Classrooms
- Drama Classrooms
- Black Box Theater
- Career Center
- Staff Lounge

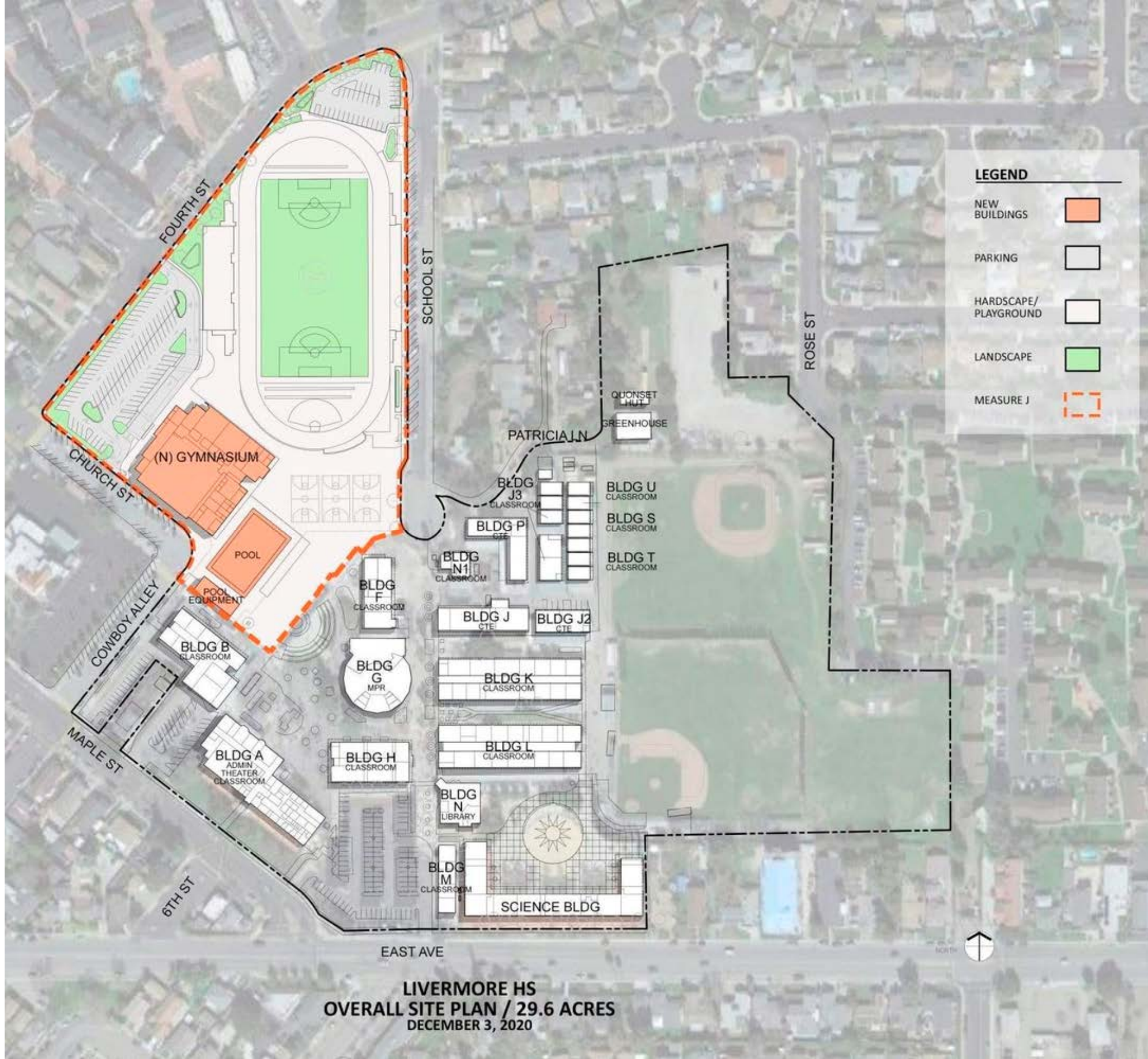
Livermore Valley Joint Union School District

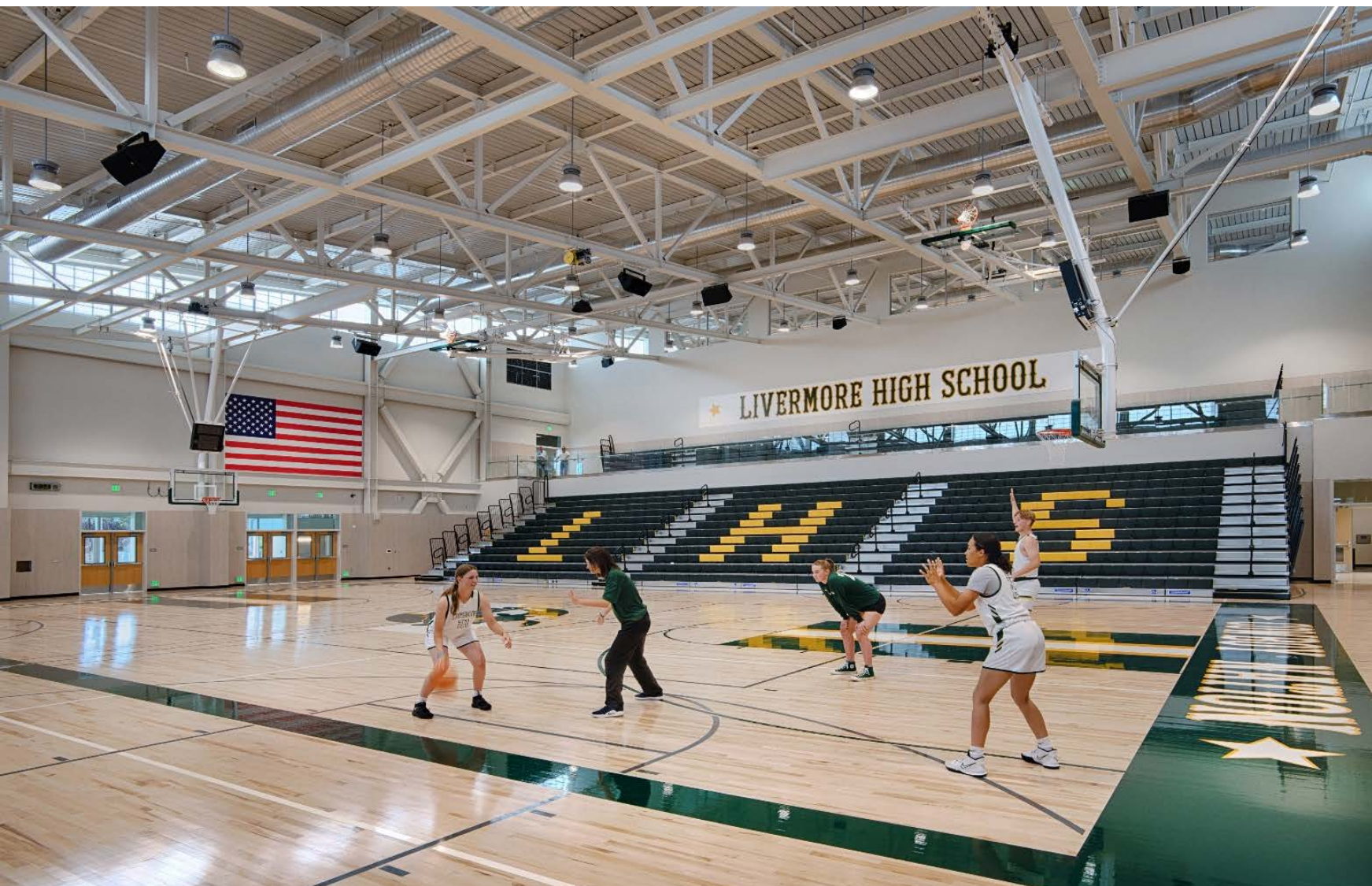
Livermore High School

- Campus Master Planning
- 1st step in the Campus Transformation
- Student Pride and Engagement



HED





LIVERMORE HIGH SCHOOL

Colors



Green
PANTONE 2411 C
RGB: 28 66 32
HEX/HTML: #1C4220
CMYK: 58, 0, 52, 74
75210077



Gold
PANTONE 116 U
RGB: 255 181 17
HEX/HTML: #FFB511
CMYK: 0, 29, 93, 0
0191000

Logos



CA Bronco Logo



Official IHS Bronco



Official CN Logo



Official ASB Logo



Alternate CN Logo



Official IHS Logo



Official Today Logo

Fonts

HEADLINES

Stahls - TiffanyBlock

Subheads

DIN Condensed

Body Copy

Futura - Light

Lorem ipsum dolor sit amet, consectetur adipiscing elit, sed diam nonummy nibh euismod tincidunt ut laoreet dolore magna aliquam erat volutpat.

Banners/Headers



Official CN Banner



Alternate CN Banner



Official CN Flags

Livermore High School Athletic Complex

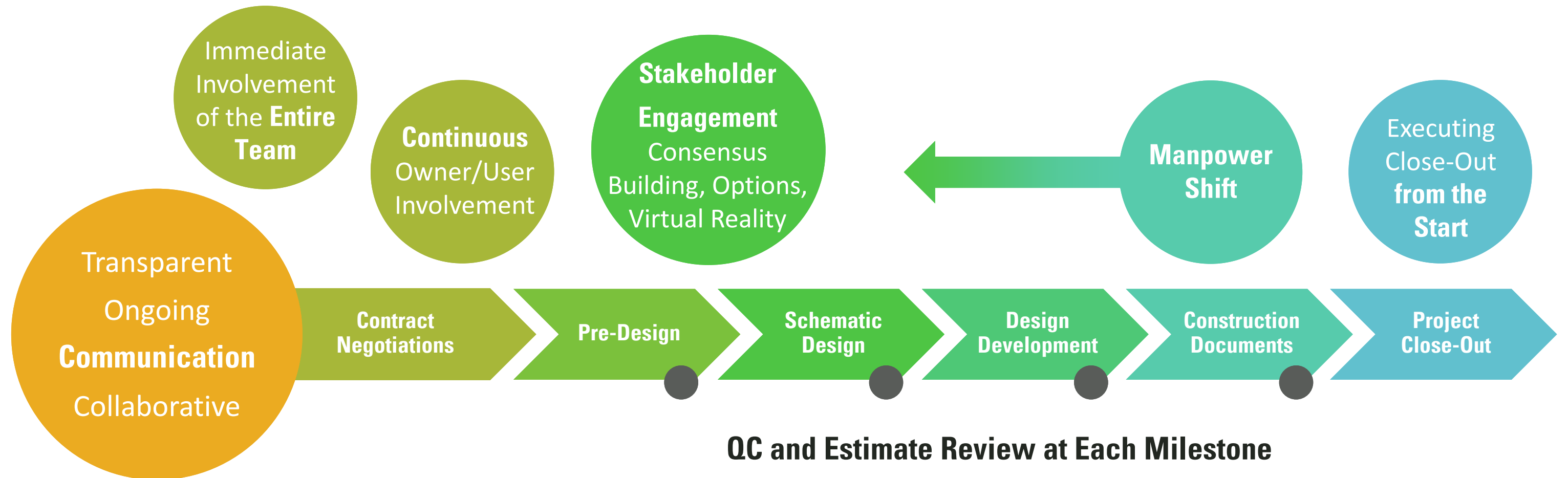
- Daylighting
- Competition Swimming Pool
- Stacking of Gyms
- Solar Array (A/C demand)
- Environmental Graphics
- Community Events Center

CHALLENGES AND OUR ROAD TO SUCCESS

HOW DO WE GET THERE?

HED

Our Collaborative, Integrated Design Process:

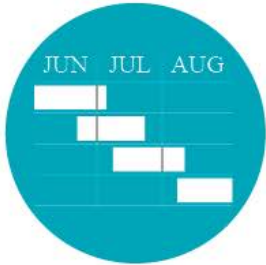


- Prioritize NEEDS vs WANTS
- Provide bid alternates of scope as 'relief valves'

Quality Documentation | QA / QC Process



Project Workplan



Wallboard Session



Internal Team Meetings



Open Issue Log



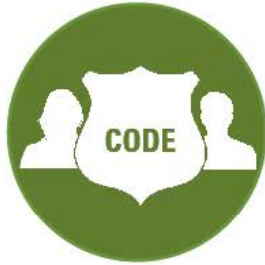
Systems Space Allocation



Building Envelope Review



Room-by-Room Review



Code Authority Meetings



Drawing Phase Checklist



Final Document Check

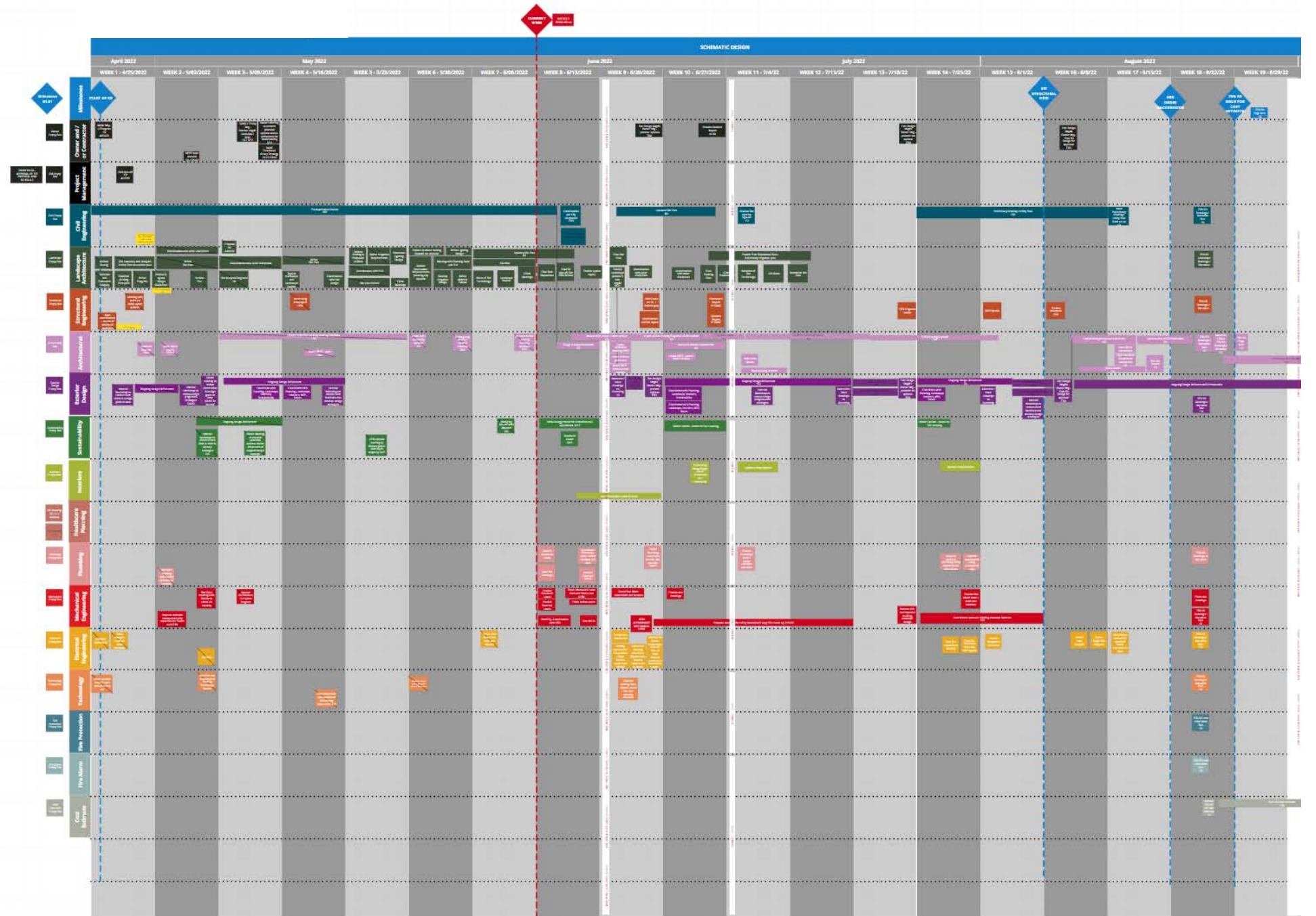
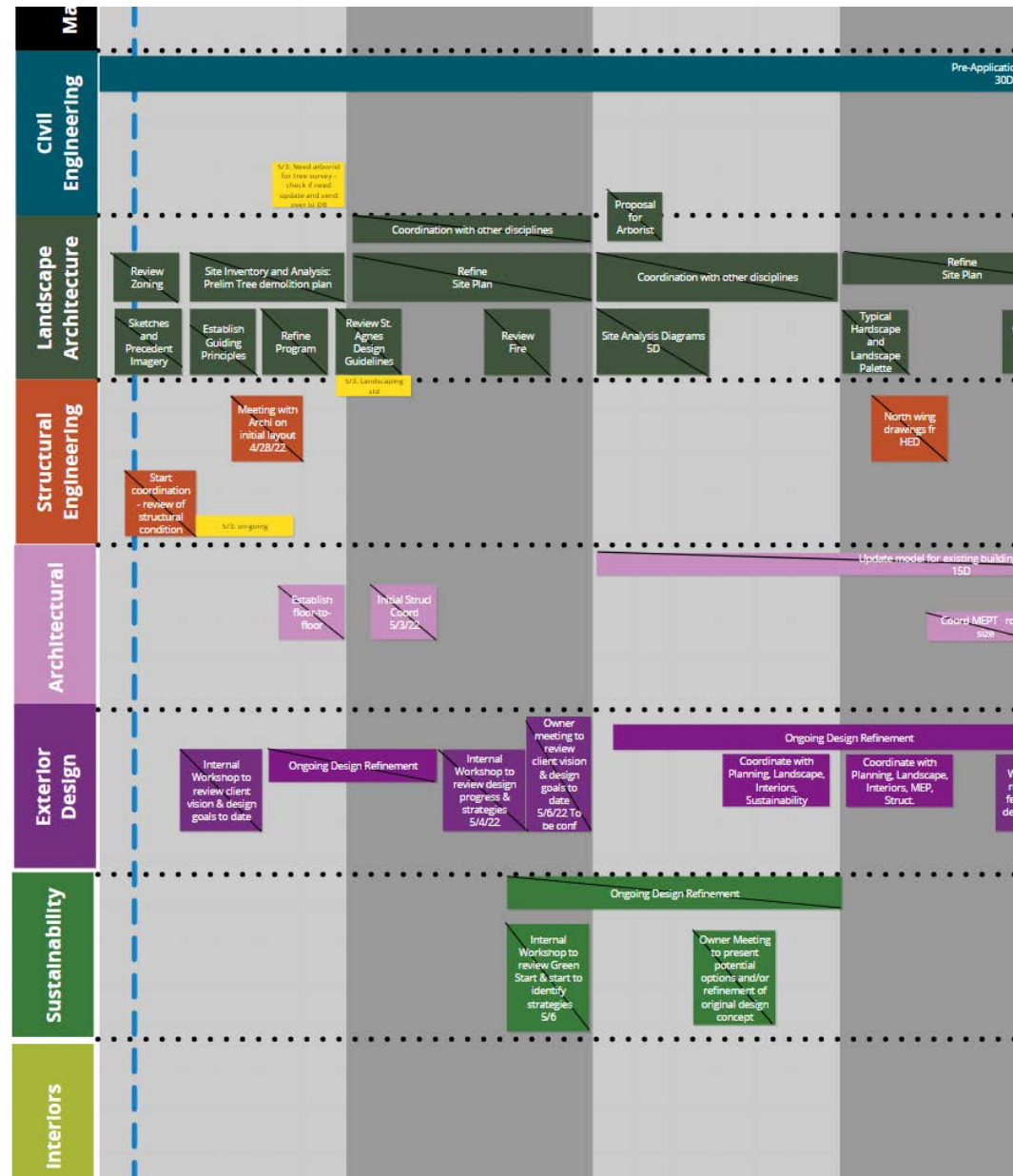


Continuous Improvement Procedures



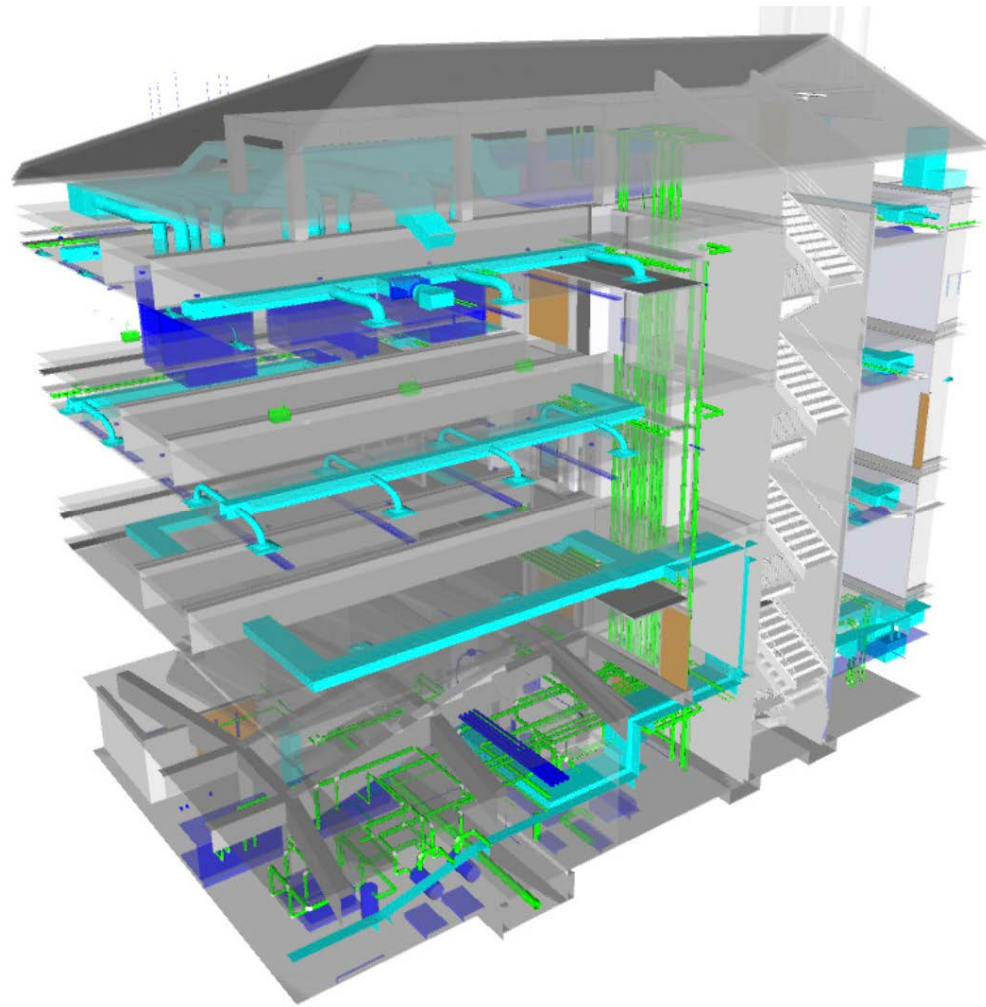
Building Information Modeling

Team Collaboration

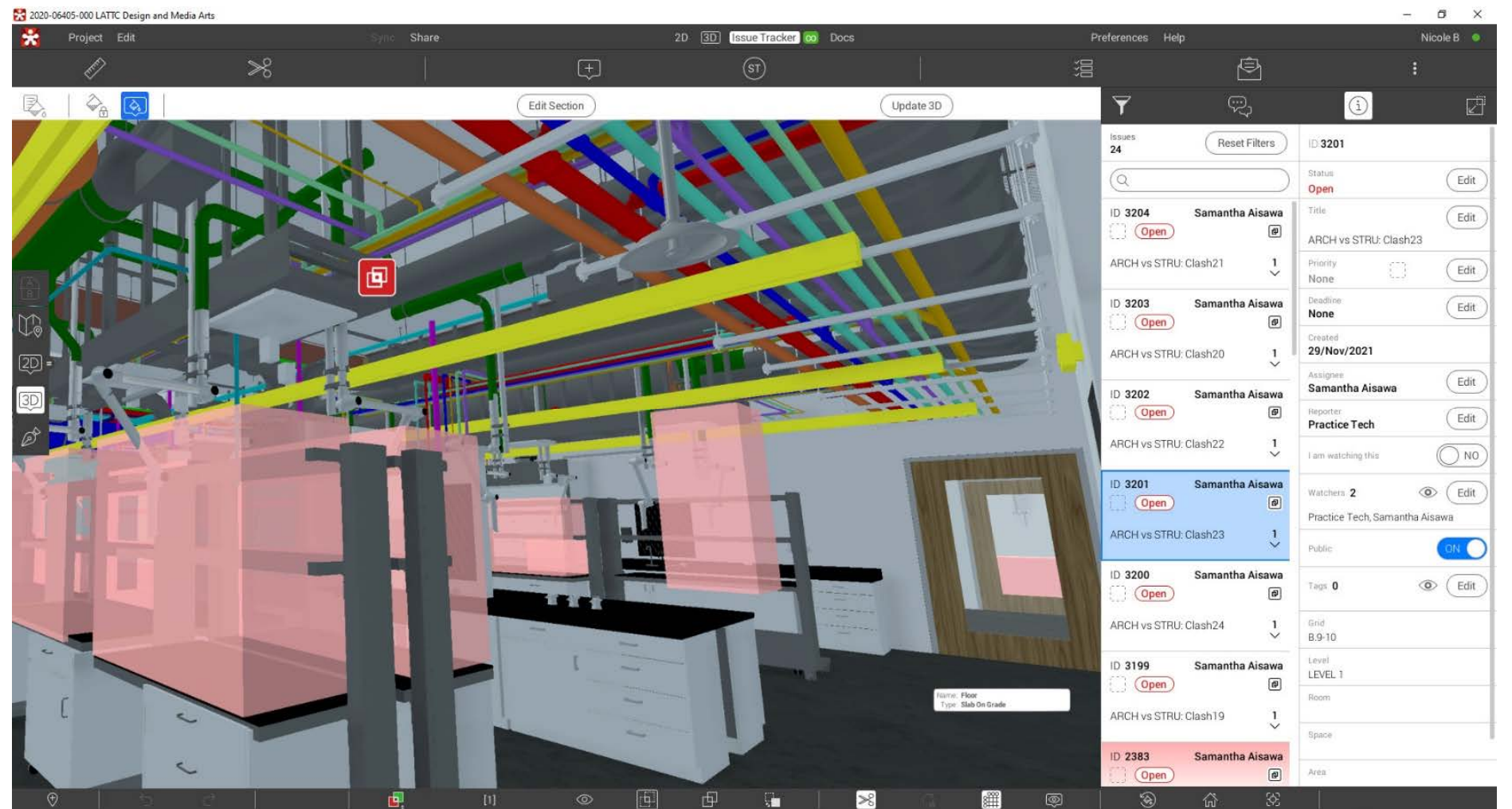


Integrated Approach | QA / QC

Building Information Modeling (BIM)



Revizto Interface with Clash Detection



Quality Documentation | Minimizing Uncertainty

Quality Assurance

Project Architect reviews the project team's work on a weekly basis

Quality Control

Project Manager or Principal performs review at specific milestones with time for team to address comments

DSA

- Early meetings during SD and DD
- Early structural design review
- Proactive pre-check meetings
- Proactive back-check meetings
- Use DSA Box daily
- Closeouts are swift

Consultants and manufacturer reps are part of our QA / QC team!

Construction Administration A Collaborative Approach

- Establish roles and responsibilities for all parties early in the process
- Engage a platform for seamless communication
- Work in partnership with CMs
- Frequent communications to circumvent major issues
- Frequent site visits
- Swift response times
- Consistent Design/Construction Team

HED



Project Close-Out A Collaborative Approach

- Engage all partners and complete the required certifications
- All punch list items are cleared
- All drawing revisions are approved and recorded
- All documents, manuals, and instructions are issued and staff is offered training
- Post-Occupancy survey
- Warranty period follow-up

I-HED



WHAT SUCCESS LOOKS LIKE

HED

Link to the video shared of the recently completed Livermore HS Athletic Complex: <https://youtu.be/3lhiYQSwAuE>



*"First we shape our buildings;
thereafter they shape us."*

Winston Churchill

DISCUSSION

HED

