

Exclusively For:

MDUSD

Northgate High School

Dealer is responsible for verifying all dimensions needed for furniture & decor in this book prior to PO.

VERIFIED MEASUREMENTS REQUIRED

Date Measured: _____
Initials: _____

INTAKE MEETING REVIEW

Attendees:

Alex Emmott (FSD), Assistant Paula, Assistant Deanna, Shelley Carmichael (Food Service Manager), Ron Otero (I.T.), Tucker Farrar (VP), Shannon Bottorff (Campus Supervisor)

Desired Seating Capacity: Show Supplemental Furnishings for Review

Requirements:

- To have new look/artwork within the serving area and on main façade.
- Cover the exposed side of the fume hood.
- Accent pendant lighting recommendations welcome.
- Main graphics theme to focus on nutrition and wellness.
- Utilize school colors/mascot as an accent theme in the artwork.
- Show new queue rail setup.
- Provide bulletin boards.
- Take positions of new screens on the main wall into account in the design.
- Show café tables around entryway and in sunken forum area as an option.

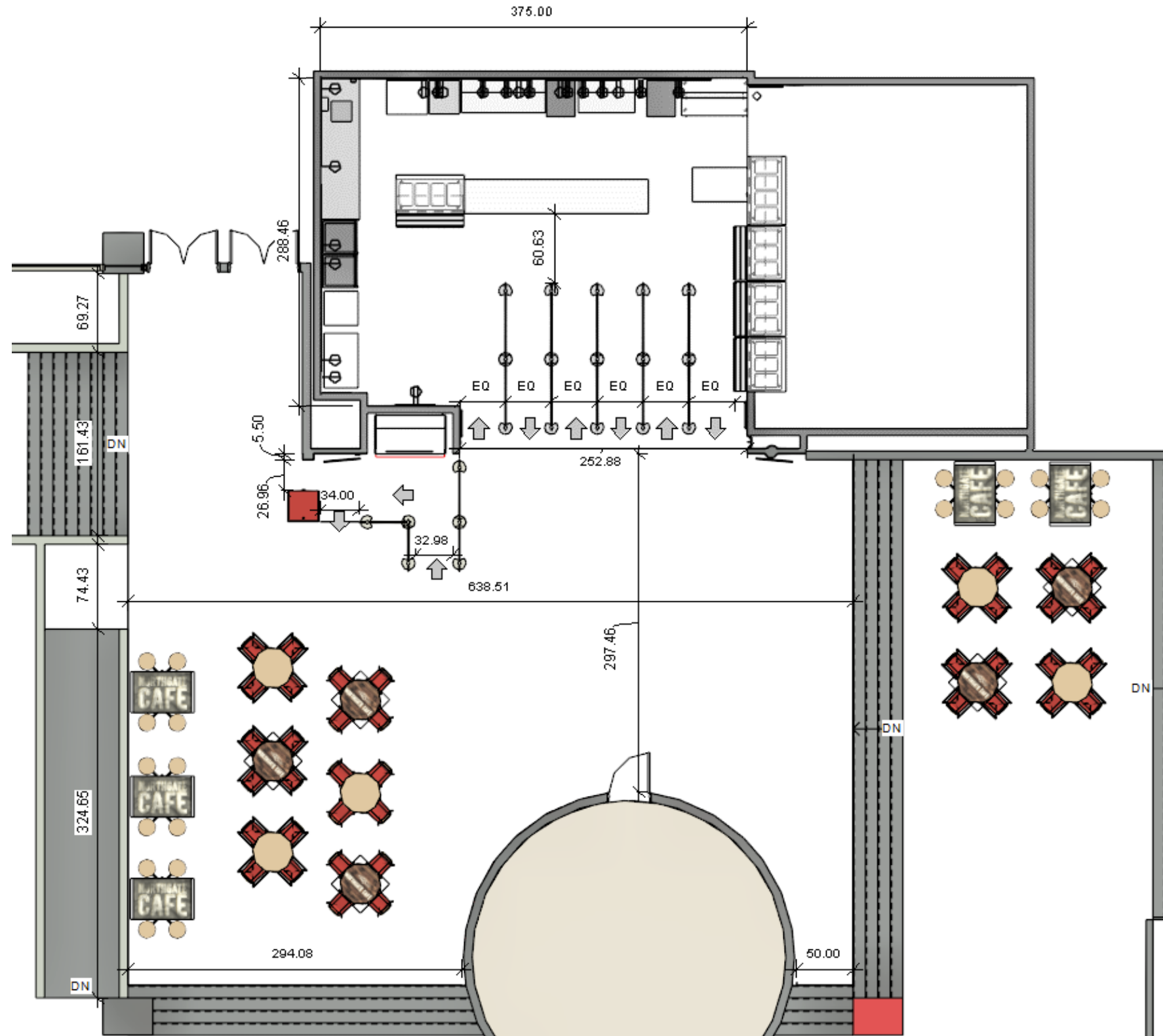
Overall Objective:

Update the serving area and immediate spaces with a new artwork style and opportunities to promote healthy choices and school spirit.



CURRENT

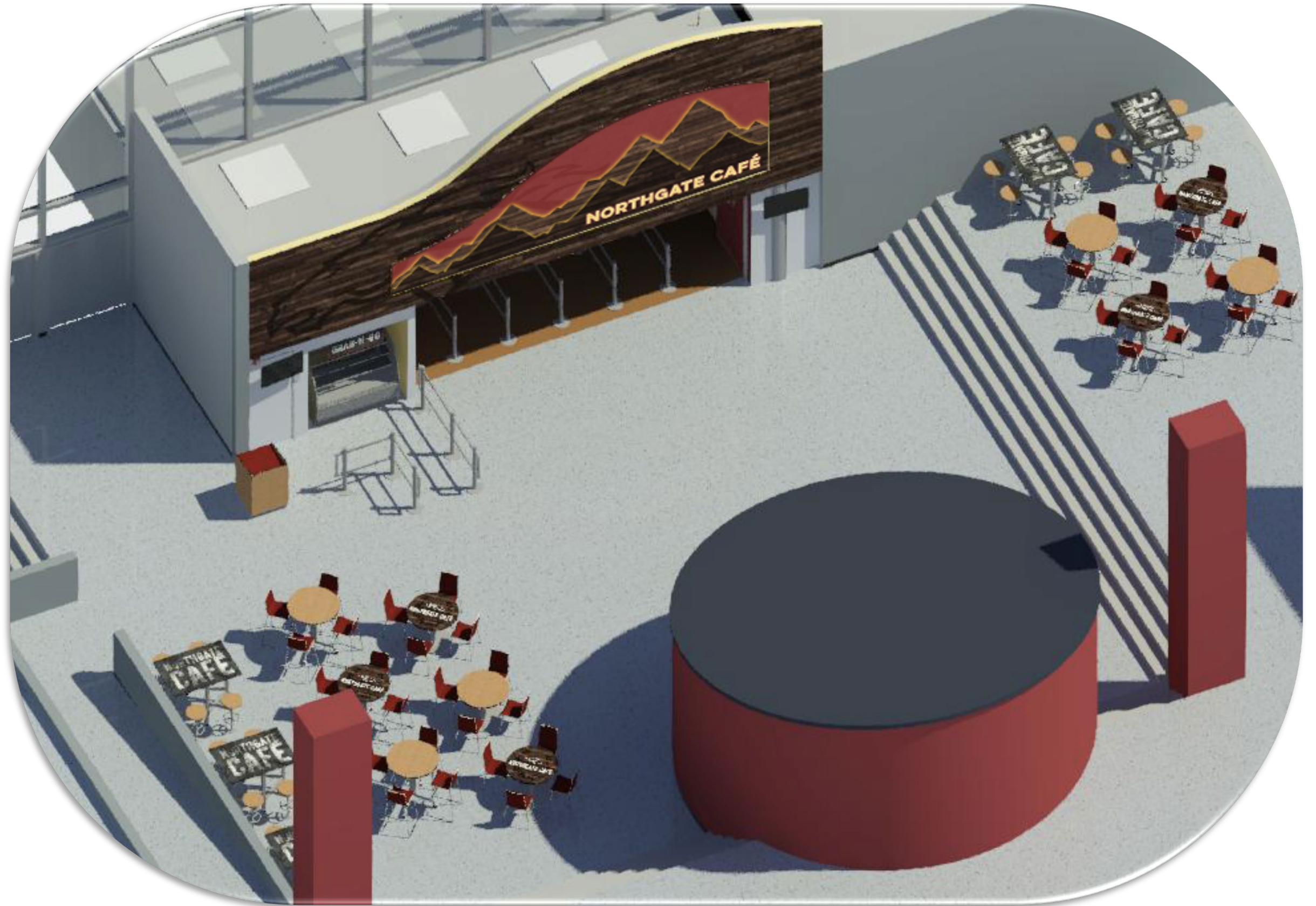
CAPACITY SHOWN: 60



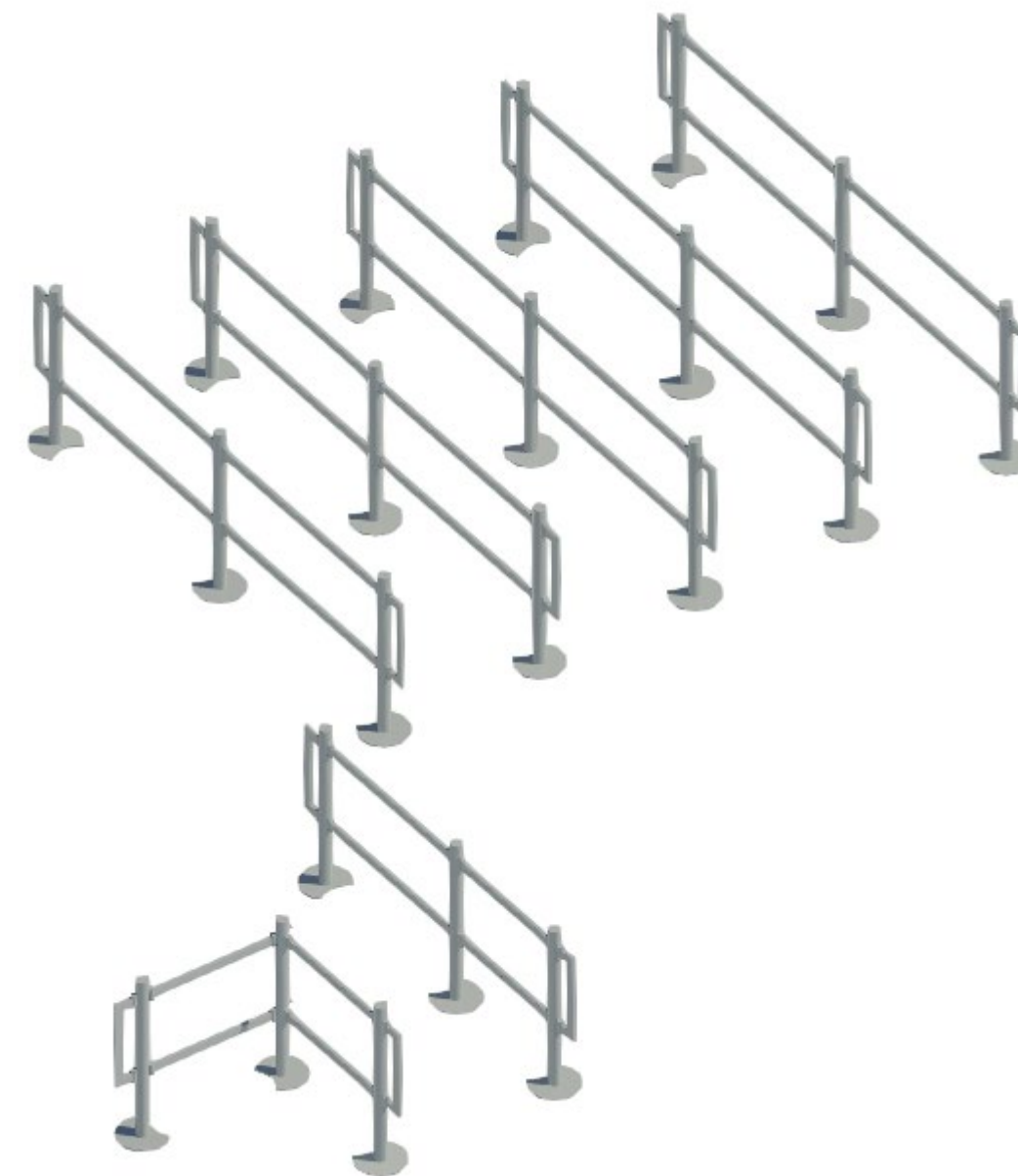
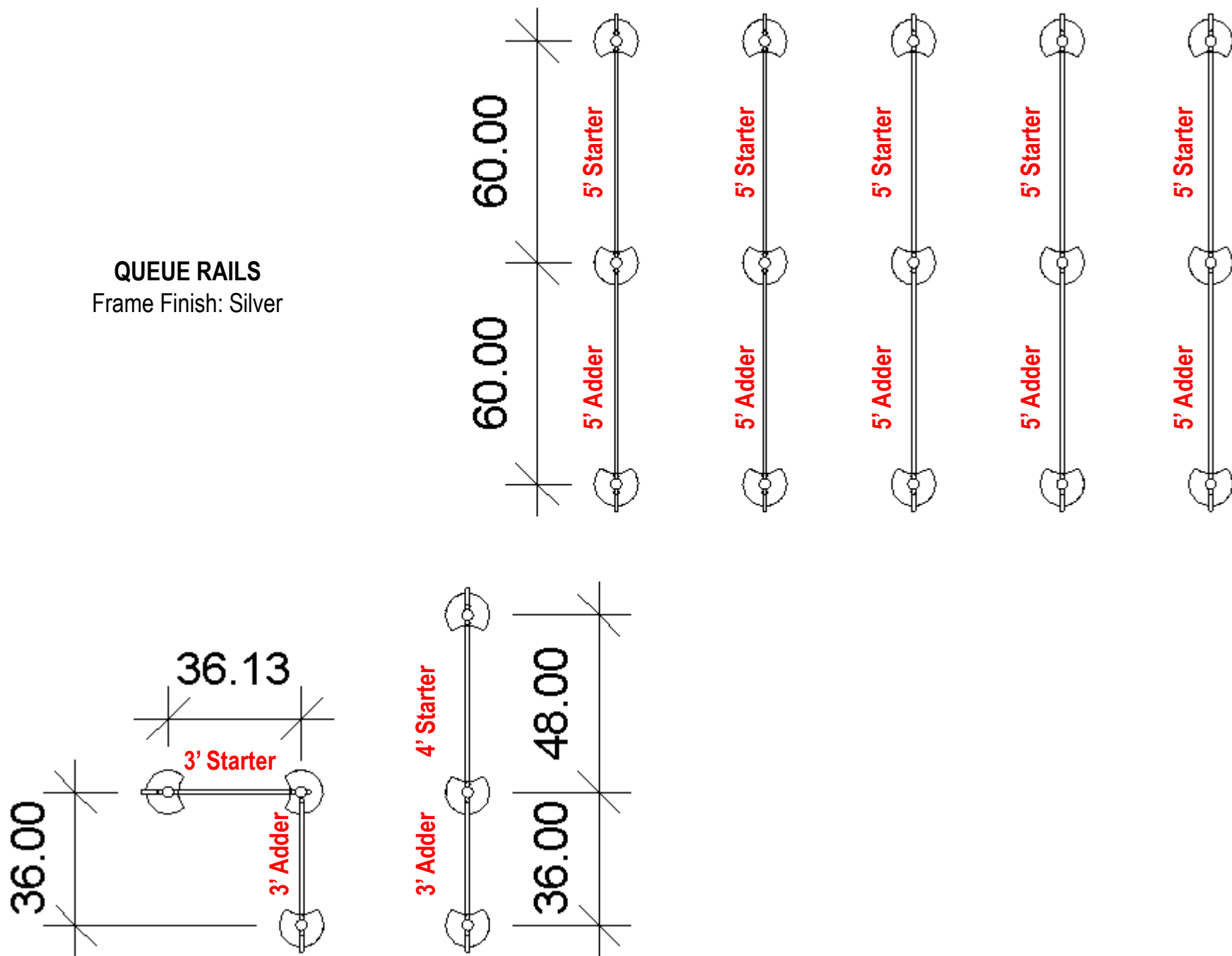
NOTE: Layout is not ADA compliant. School is responsible to indicate if additional ADA spots are required.



ISOMETRIC VIEW



QUEUE RAILS
Frame Finish: Silver





RALLY TABLES
 Laminate Top: Custom
 EdgeGuard: Black
 Frame: Silver
 Stools: Natural Hardwood Stain
 Locking Casters
**Legs swing in and out from magnetic base.*
***Legs spring down to floor when occupied. When not occupied, leg base plates hover slightly above floor to prevent scratching when pushed in to base.*



KURPIE CHAIRS AND STOOLS
 Laminate Shell: WA Port
 Frame: Chrome



KURPIE DOLLY
 *usable on stairs
 Stacks 4 pub or 8 std



PHLIP 36" ROUND PUB HT. TABLES
 Laminate Top: Custom or WA Limber Maple
 EdgeGuard: Black
 Frame: Silver
 Locking Casters; Tables Flip & Nest

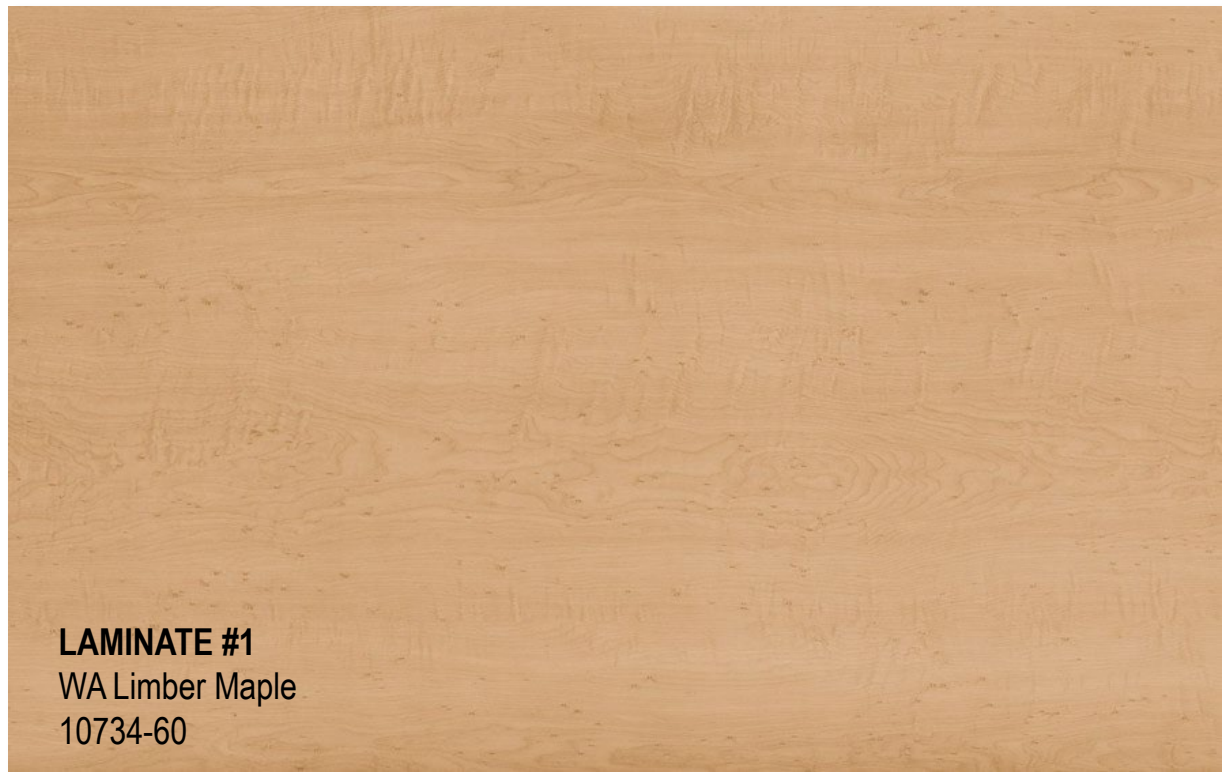


AERO FLAT BASE TABLES
 Laminate Top: Custom or WA Limber Maple
 EdgeGuard: Black
 Frame: Silver



CASHIER STAND
 Laminate Top/Drawer: WA Port
 Laminate Sides/Back: WA Limber Maple
 EdgeGuard: Black
 Locking, Grommet Hole





LAMINATE #1
WA Limber Maple
10734-60



LAMINATE #2
WA Port
D14-60



NATURAL
RALLY STOOL STAIN



LAMINATE #3
36" Round - Custom



LAMINATE #4
Rally 4-seat - Custom

NOTE: Logo shown is a representation of the school logo – please supply a working vector file in .eps or .ai format.



RENDERED VIEWS

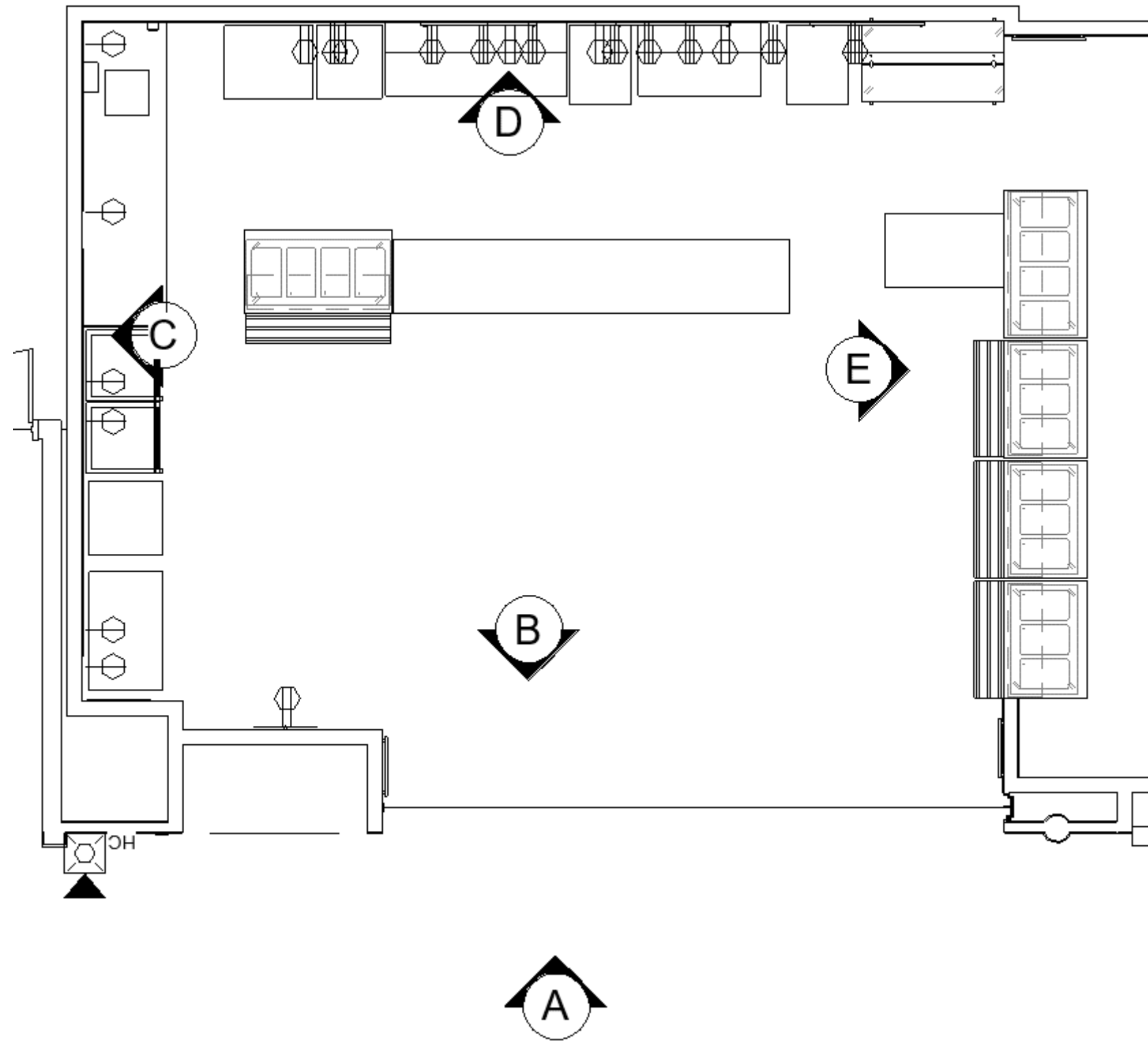
OPTION TWO



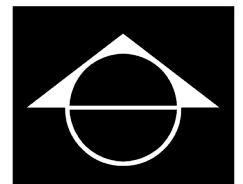




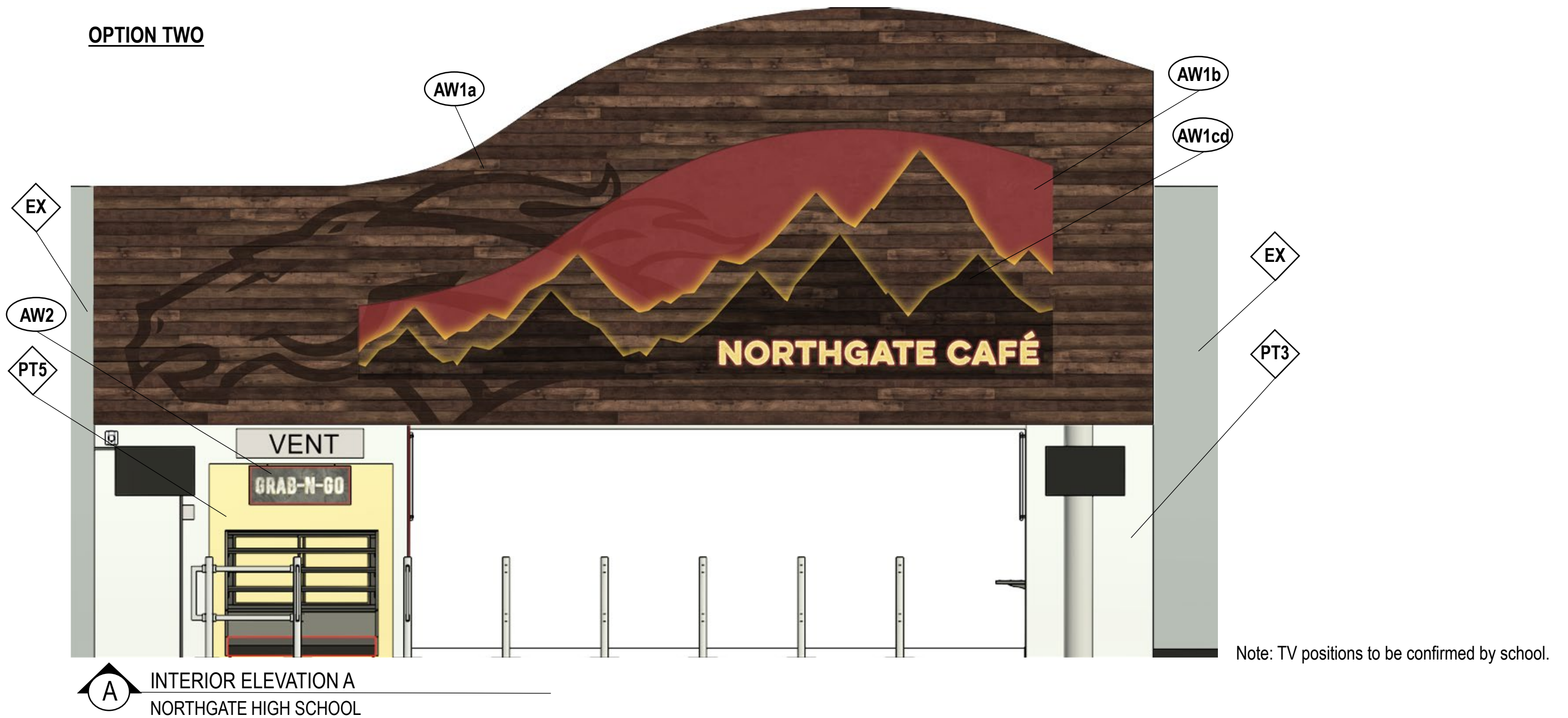




ELEVATION PLAN



OPTION TWO



A INTERIOR ELEVATION A
NORTHGATE HIGH SCHOOL

Note: TV positions to be confirmed by school.



AW2 –OPTION ONE

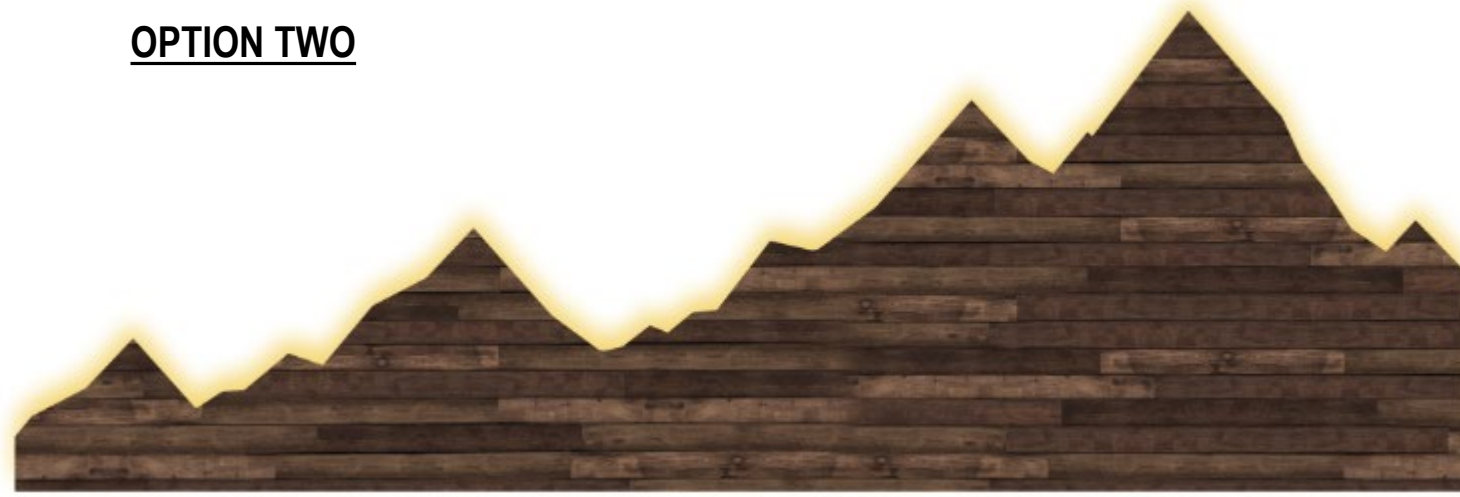
Direct print on 13mm Gatorplast.

Ceiling hung within alcove 63" AFF with silver aircraft cables.

Size: 41.65"W x 16"H

**Install Note – please keep this piece removeable for future sign swap-outs as needed by client.*

OPTION TWO



School is responsible to ensure appropriate electrical hookups are installed. Requires one standard outlet per transformer.



Graphic font modified by SB

AW1c (Option 2)

Layer 1: Background Mountains
Direct Print on 3mm White Dibond
Cut to Shape
Wall Mounted w 2" Silver Standoffs
RGB LED Halo Glow

Size: 284"W x 98.3"H

AW1d (Option 2)

Layer 2: Topical Mountains
Direct Print on 3mm White Dibond
Cut to Shape
Wall Mounted w/ 4.5" Silver Standoffs
RGB LED Halo Glow

Layer 3: Letters

3mm White Acrylic
Adhered to Back of White Dibond Layer

Size: 284"W x 59"H



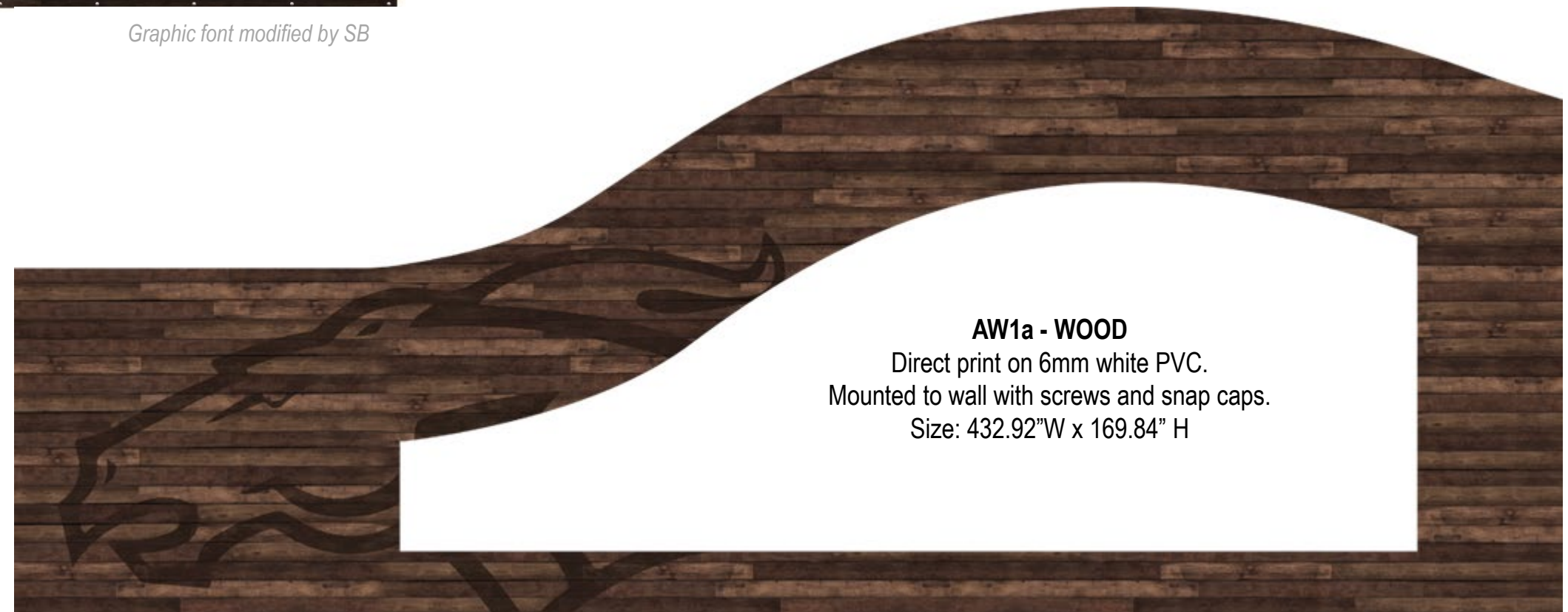
AW1b - BACKGROUND

Direct print on 3M 480c Smoothwall with overlam.

Cut to shape.

Applied to wall with high heat.

Size: 284"W x 169.84"H



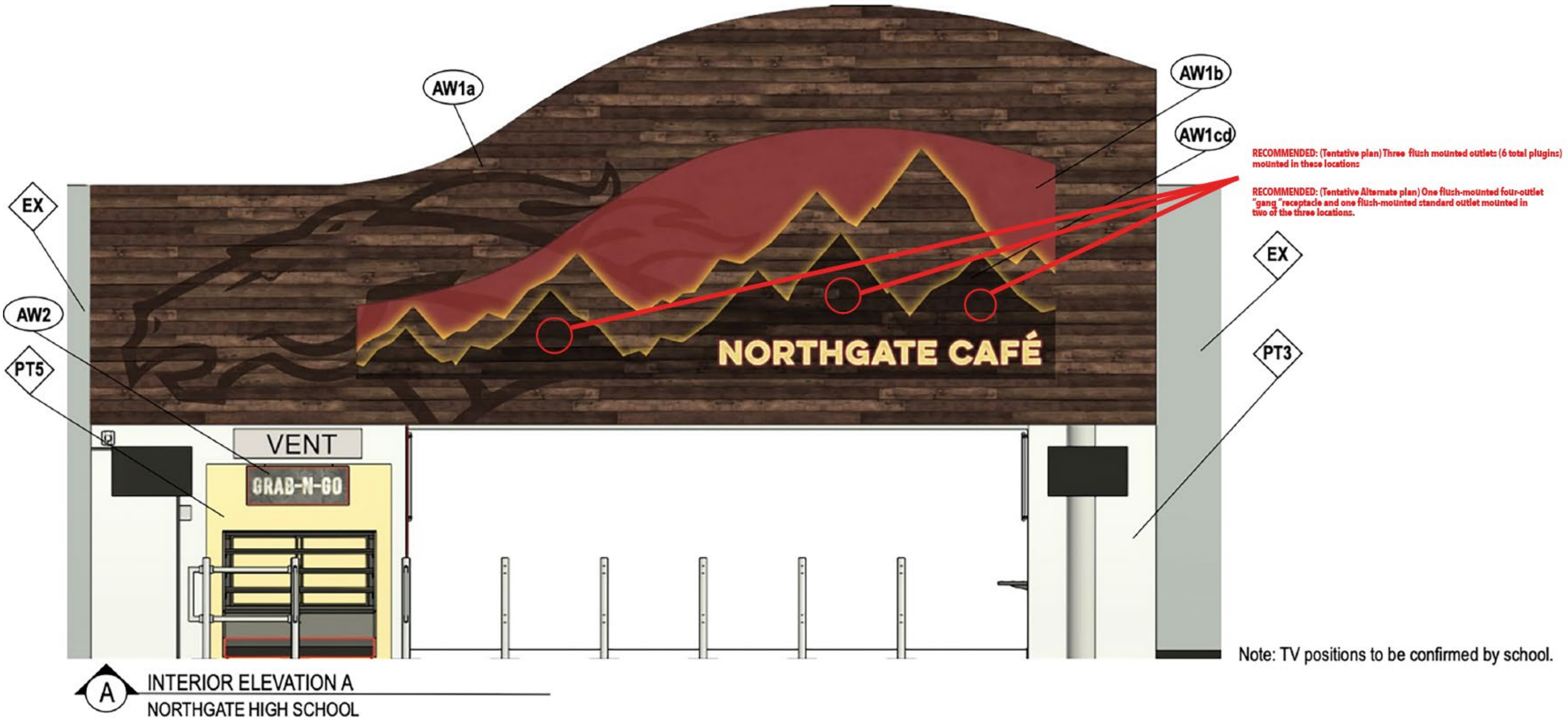
AW1a - WOOD

Direct print on 6mm white PVC.

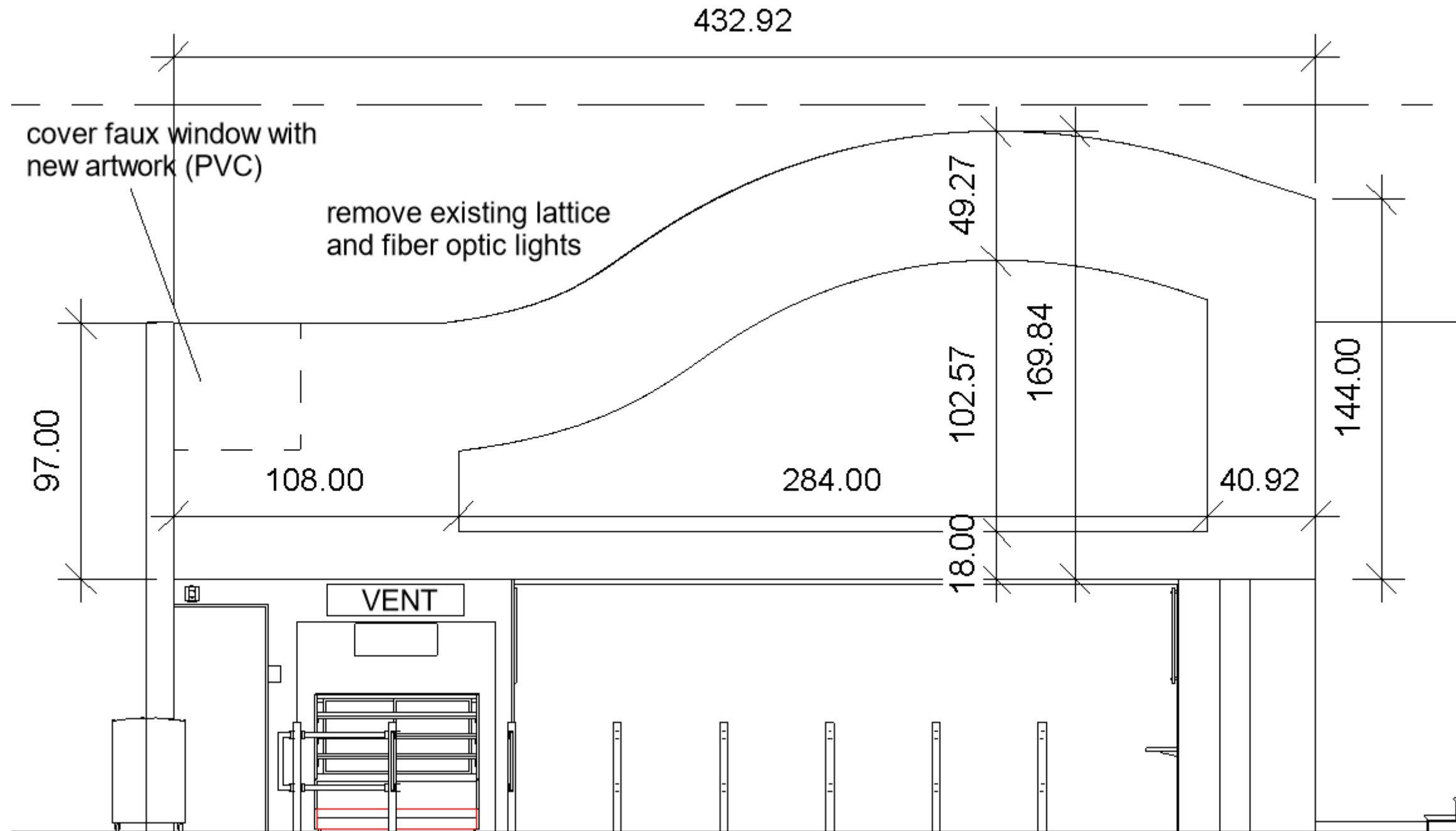
Mounted to wall with screws and snap caps.

Size: 432.92"W x 169.84" H





ELEVATION A: DIMENSIONS





B INTERIOR ELEVATION B
NORTHGATE HIGH SCHOOL

NOTE: School is responsible to remove hooks from this area.

GATHER, EAT, AND BE **INSPIRED** – THE RECIPE FOR A BRIGHT FUTURE

AW8

Second surface print on 6mm clear acrylic.
Cut to shape. Wall mounted with aluminum screw caps.
Size: 292.7"W x 10"H



AW7b - LED

Direct print on 3mm white dibond.
Cut to shape.

Wall mounted with 2.5" silver standoffs.

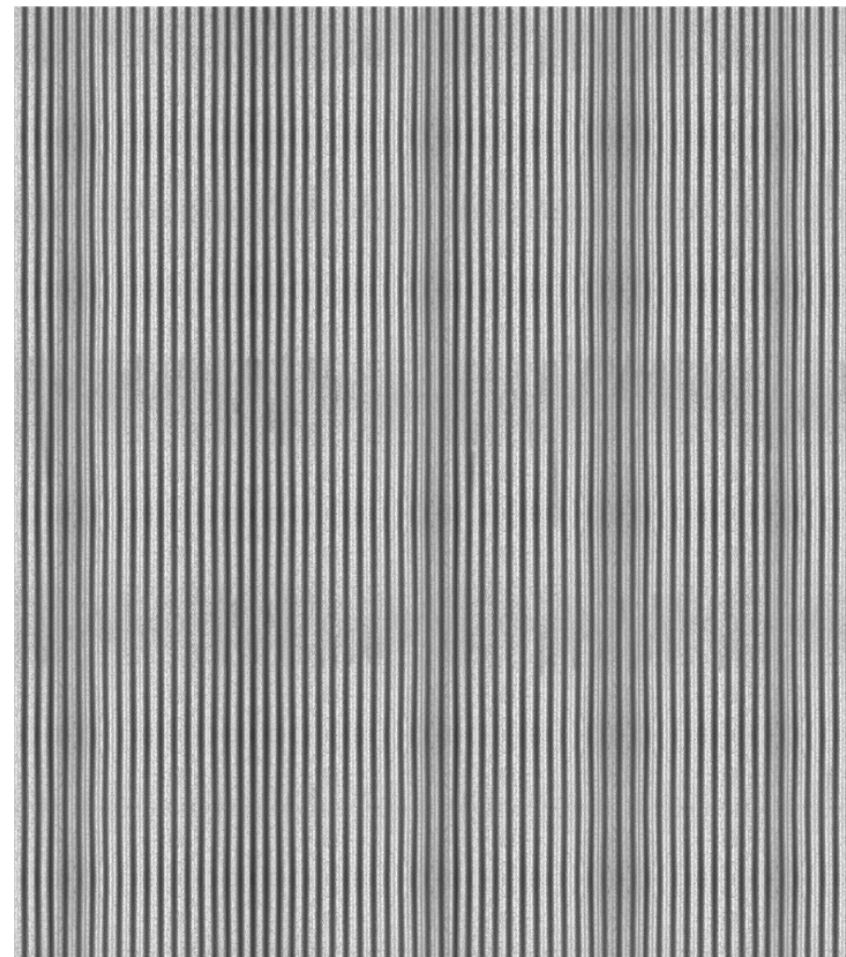
White areas GLOW – 3mm white acrylic, cut to shape,
adhere to back of layer one.

6500K UL certified LEDs mounted behind layer two.

Powered by remote control.

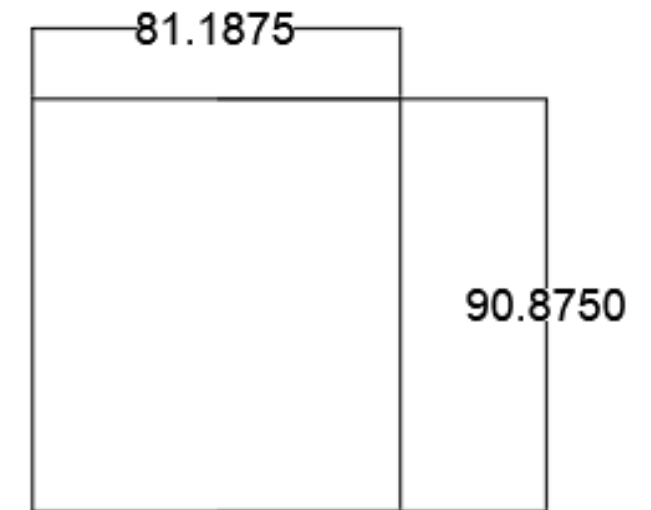
Size: 36" Diameter

Plug into wall below.

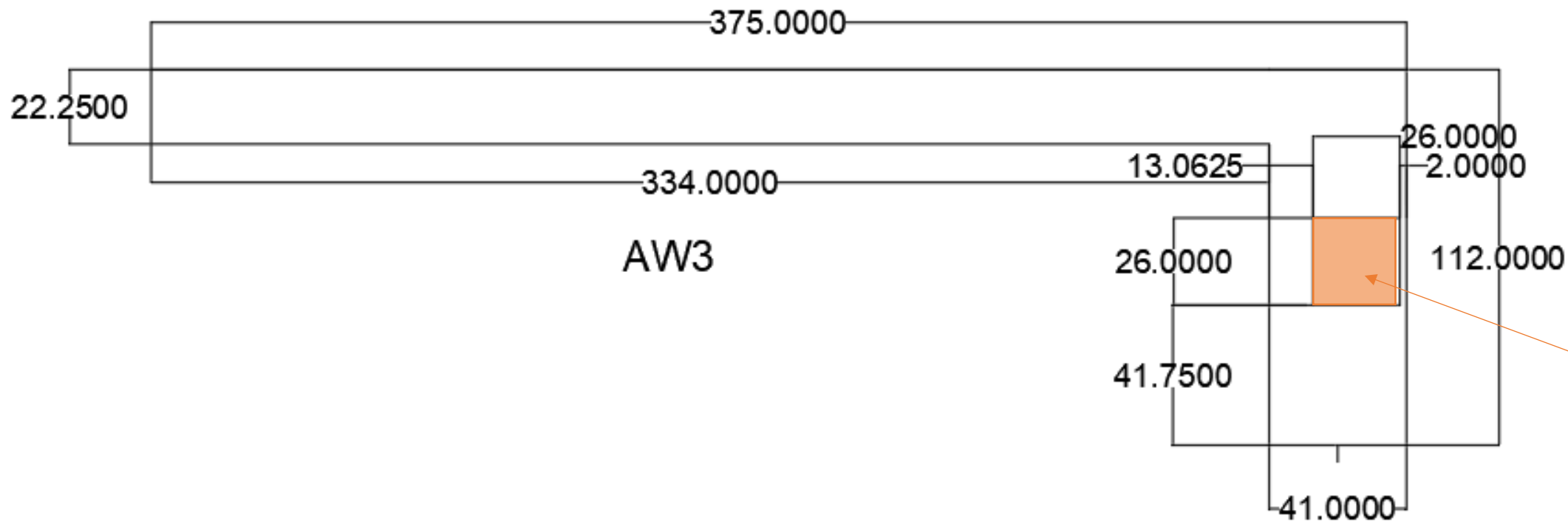


AW7a

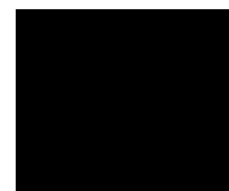
Direct print on 6mm white PVC.
Mounted to wall with screws and snap caps.
Left edge trimmed with silver L channel.
Size: 81.1875"W x 90.8750"H

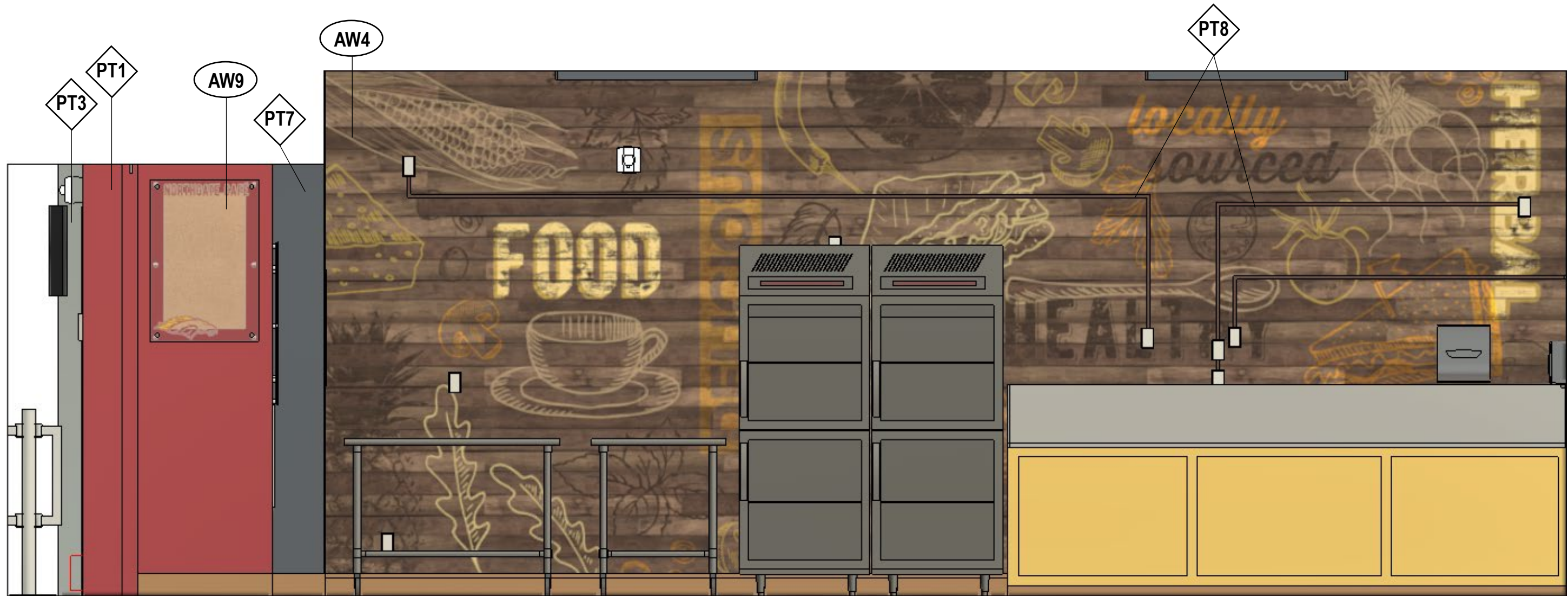


AW7A



AW3
 Direct print on 6mm white PVC.
 Mounted to wall with screws and
 snap caps.
 3M patch for 26x26" area indicated –
 to preserve access panel
 Size: 375"W x 112"H





C INTERIOR ELEVATION C
NORTHGATE HIGH SCHOOL



AW9

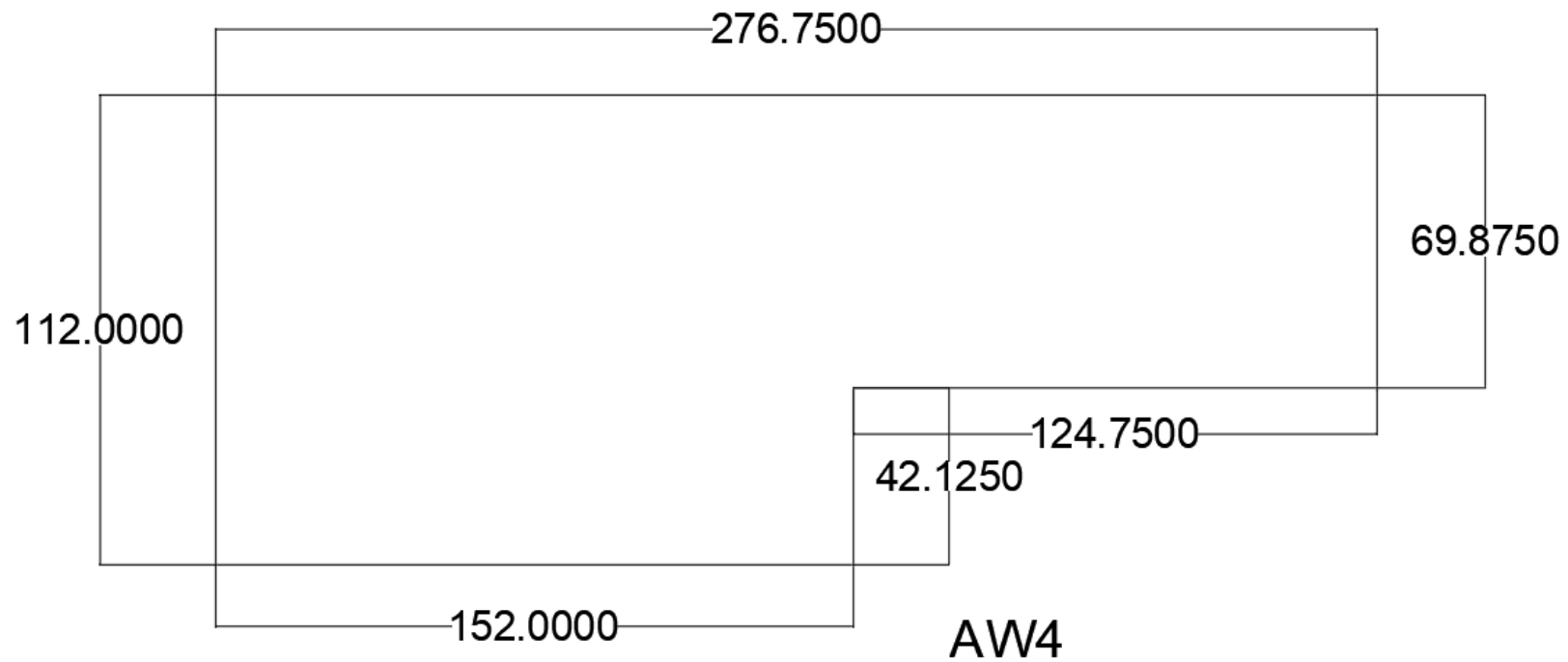
Second surface print on 6mm clear acrylic.
Wall mounted over layer 2 with 1" silver standoffs.
Layer Two: Cork adhered to 6mm white PVC
backer. Wall mounted with snap caps.
Size: 24"W x 36"H

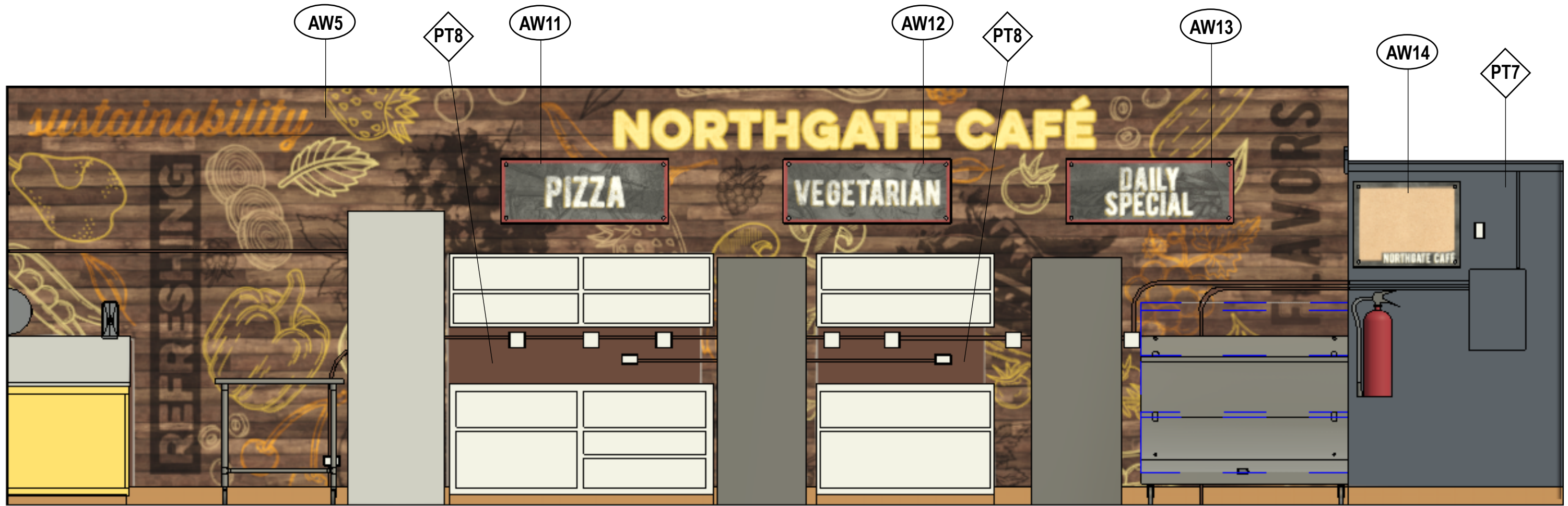


Wall shown with equipment removed.



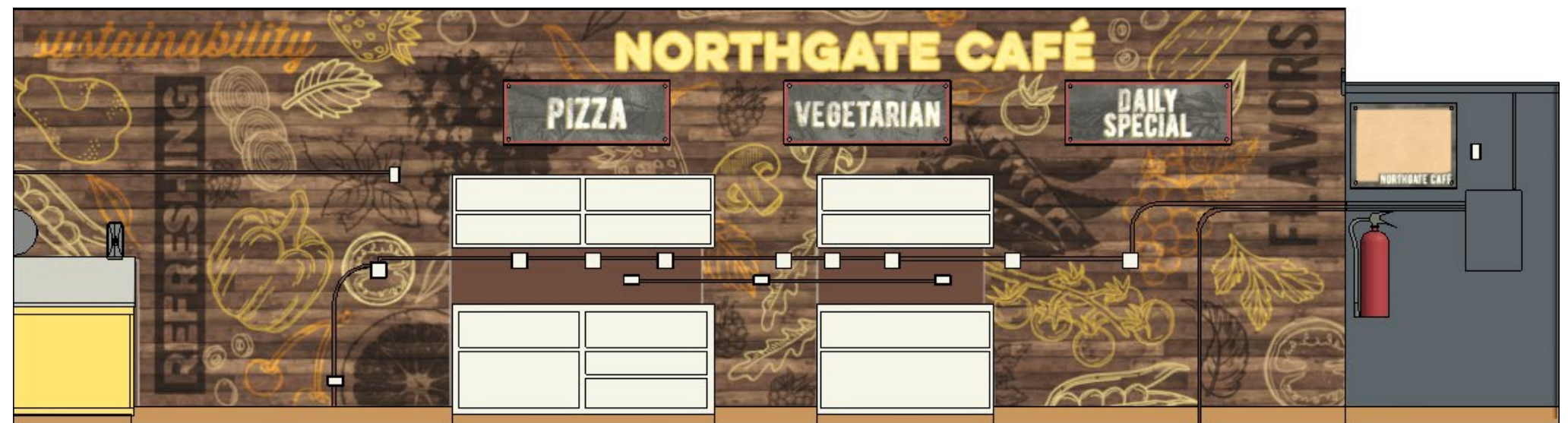
AW4
 Direct print on 6mm white PVC.
 Mounted to wall with screws and snap caps.
 Size: 276.75"W x 112"H



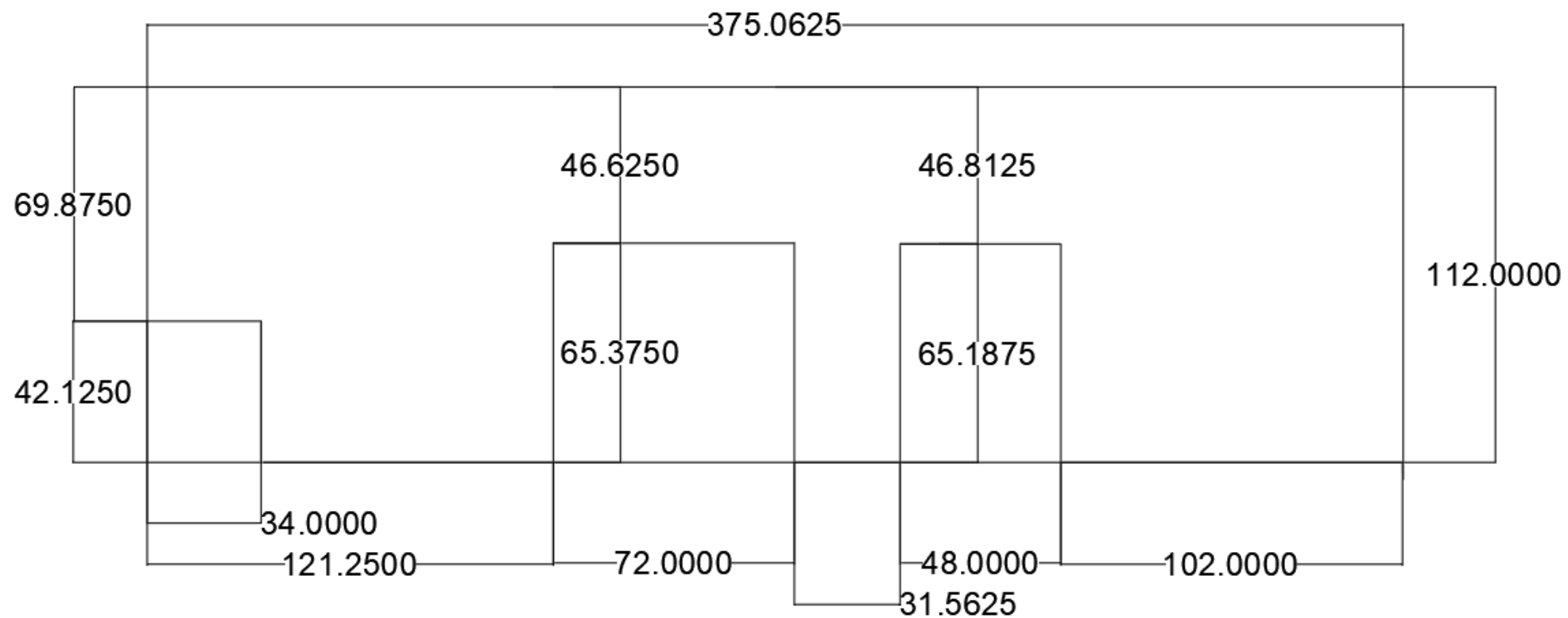


D INTERIOR ELEVATION D
NORTHGATE HIGH SCHOOL

NOTE: School is responsible to remove unwanted wall-hung items and patch walls prior to painting.



Shown with equipment removed.



AW5

AW5
 Direct print on 6mm white PVC.
 Mounted to wall with screws and
 snap caps.
 Size: 375.0625"W x 112"H





AW11-13

Direct print on 6mm white PVC.
Mounted to wall with screws
and snap caps.
Size: 47"W x 18"H Each

**Install Note – please keep these pieces
removeable for future sign swap-outs
as needed by client.*



AW14

Direct print on 6mm white PVC.
Cut to shape. Adhered to 6mm white PVC
backer. Wall mounted with snap caps.
Layer Two: Cork insert cut to shape, adhered
to 6mm white PVC backer.
Size: 30"W x 24"H

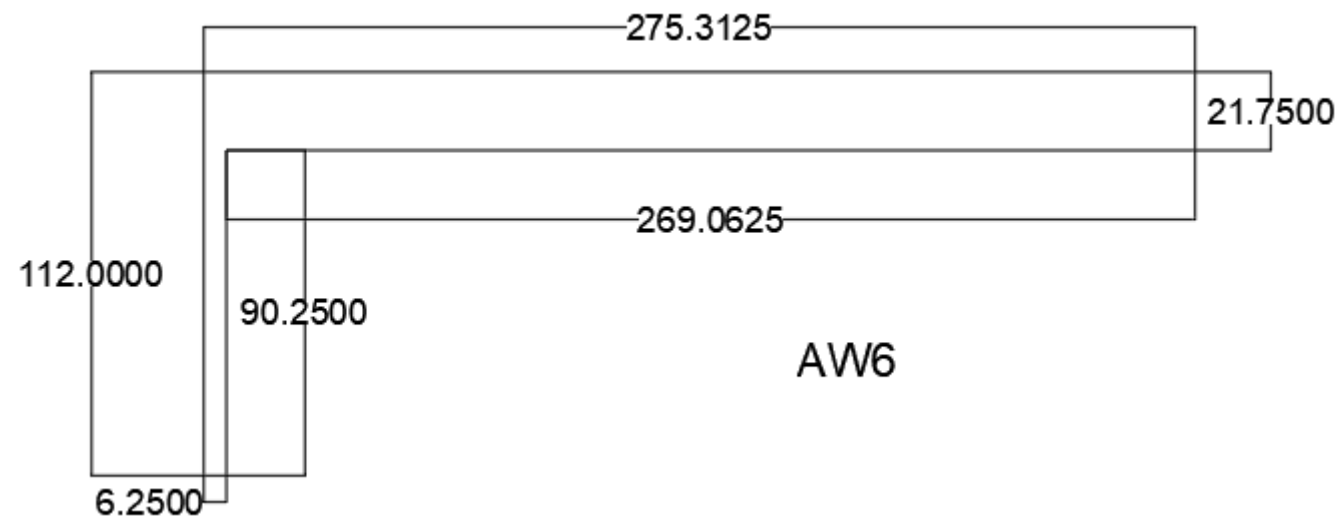
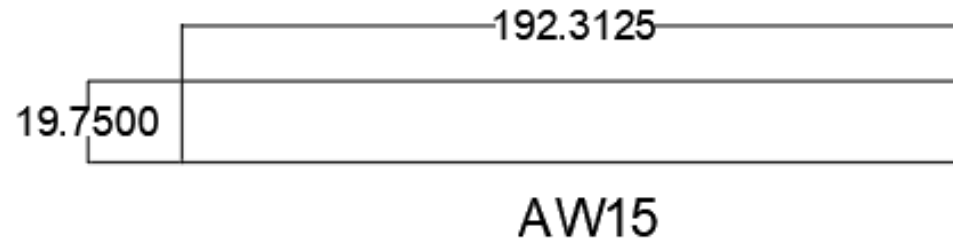
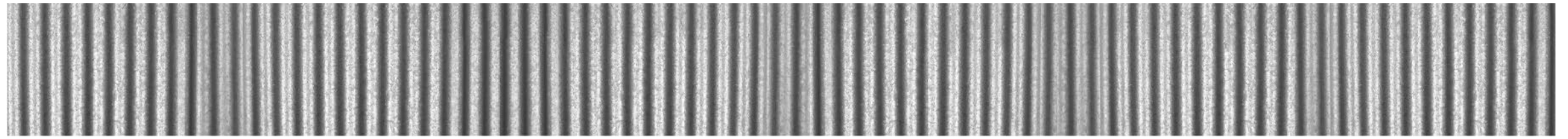




E INTERIOR ELEVATION E
NORTHGATE HIGH SCHOOL

AW15

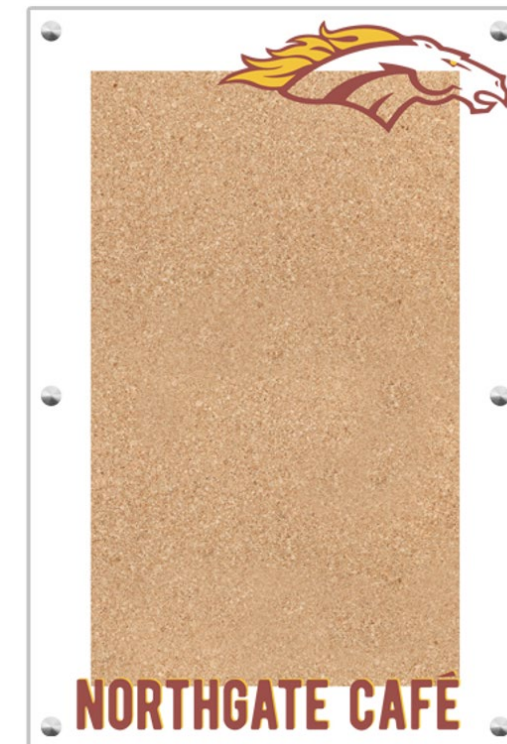
Direct print on 3M 480c Smoothwall with overlam.
Applied to fume hood with high heat.
Size: 192.3125"W x 19.75"H

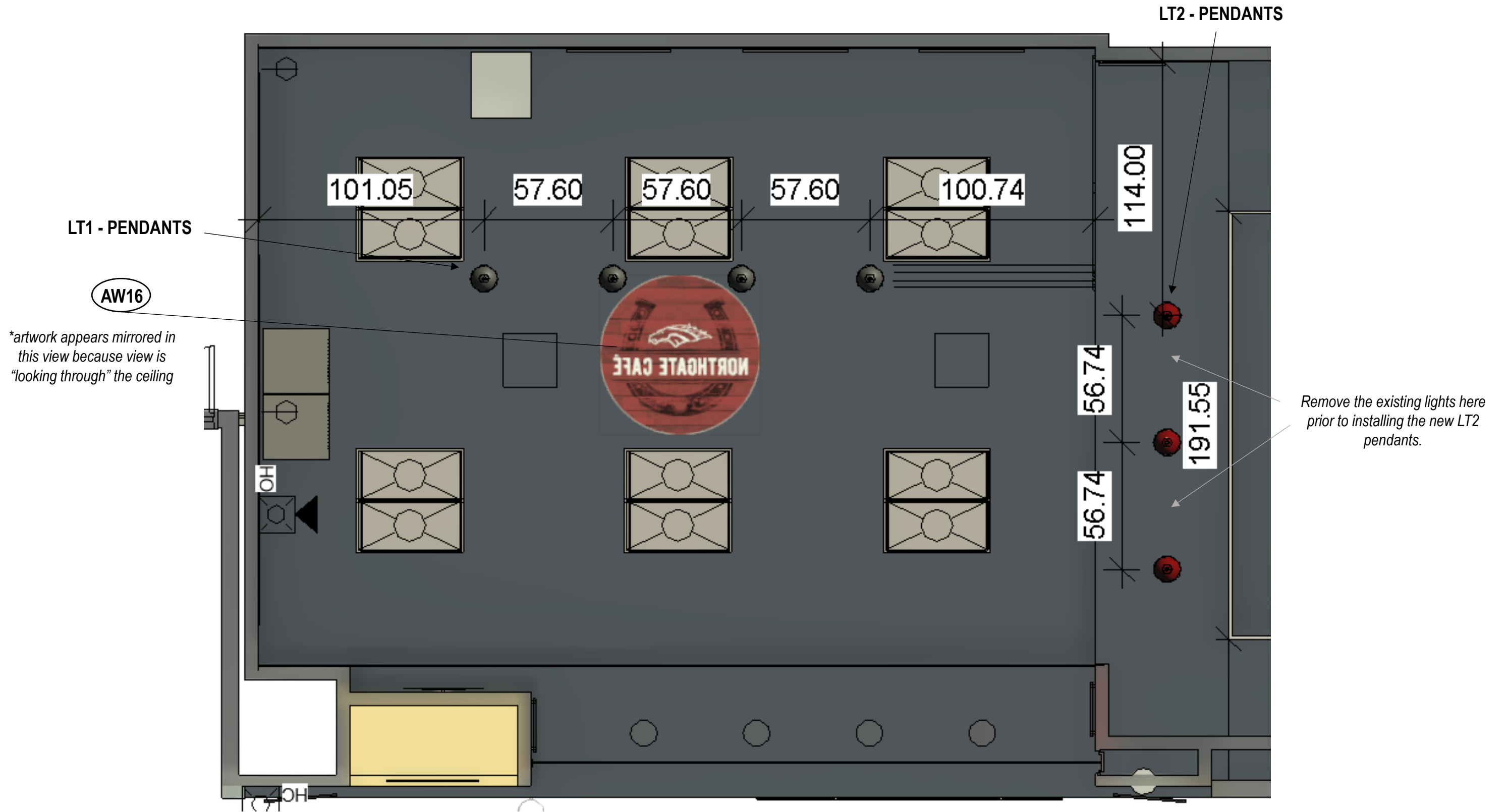


AW6
Direct print on 6mm white PVC.
Mounted to wall with screws and snap caps.
Size: 275.3125"W x 112"H

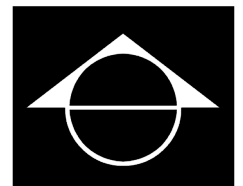
AW10

Second surface print on 6mm clear acrylic.
Wall mounted over layer 2 with 1" silver standoffs.
Layer Two: Cork adhered to 6mm white PVC backer. Wall mounted with snap caps.
Size: 24"W x 36"H





REFLECTED CEILING PLAN



LIGHTING RECOMMENDATIONS

**Recommendation only. To be purchased and installed by school.*

LT1 - PENDANTS
Barn Light Electric
Colby Cord Pendant Light
QTY. 4



LIGHT SOURCE ▶	STANDARD BULB E26/GU24
FINISHES ▶	GALVANIZED
CORDS ▶	TRD
CEILING CANOPY FINISH ▶	SAME AS SHADE
SHADE ACCESSORY ▶	NONE

LT2 - PENDANTS
Barn Light Electric
Cherokee Uplight Stem
Pendant Light
QTY. 3

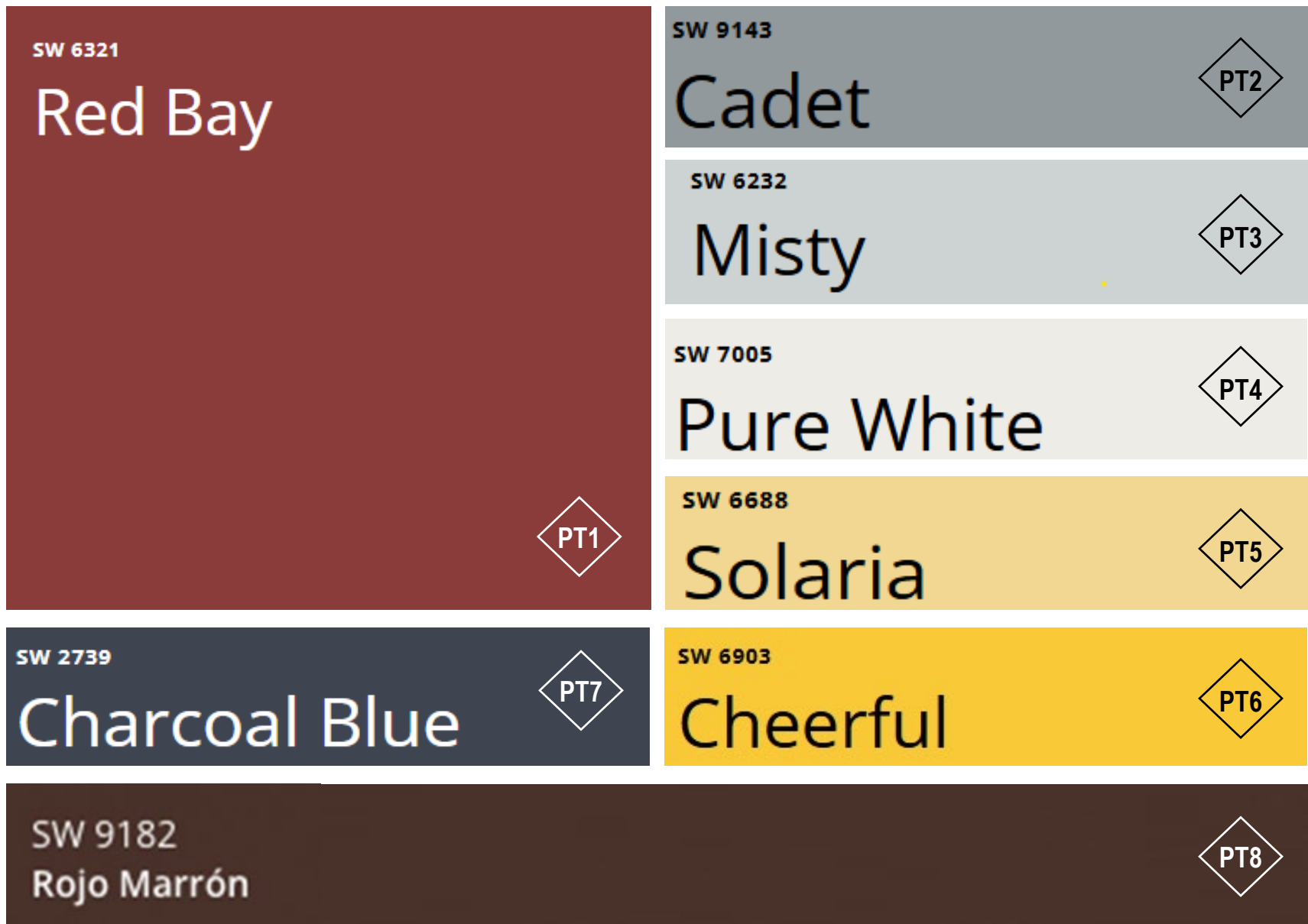


LIGHT SOURCE ▶	STANDARD BULB E26/GU24
SHADE SIZE ▶	14" SHADE
FINISHES ▶	BARN RED
MOUNTING OPTIONS ▶	12" STEM - 1/2" DIAMETER
MOUNTING FINISH ▶	SAME AS SHADE
CANOPY ▶	STANDARD CANOPY
GLASS OPTION ▶	FROSTED GLASS
SOCKET TYPE ▶	STANDARD BULB/E26

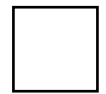


AW16
Direct print on Gatorplast
Mounted to the ceiling with
screws and snap caps.
Overall Size: 72" Round





School is responsible for materials and labor



PH is responsible for materials and labor

PREPARATION

Walls need to be properly prepped and sanded for proper paint adhesion. We then recommend at least one coat of standard Bonding Primer.

PAINT & SHEEN

We recommend all paint is Pre-Cat latex epoxy paint (all single component) in a satin sheen. These recommendations are not a requirement if the paint professional has reasoning for a different specification.



PROJECT HISTORY

PRELIM DATE: 07.19.24

UPDATED INTERNALLY (sizing of AW1 opt2 best per yield): 07.22.24

REVISION 1: 08.30.24

- Change all reds to be deeper (use WA Port laminate as a base red)
- AW1 (same materials and sizes, different imagery)
- AW2, AW11-13 (show option with write-n-wipe)

REVISION 2: 09.19.24

- Remove WR unit
- Laminate #4 – change to Northgate Café
- Elevation A – change to Northgate Café (both); update font (option two)
- AW2, AW11-13 – remove writable option, signs to be able to swap out as needed (mounting to be removeable)
- AW3-6 – all words to be food/nutrition related
- AW9, 10, 14 – to say Northgate Cafe

REVISION 3: 10.11.24

- Update all dimensions for AW3-7 per site verifications.
- 3M piece needed for AW3 where access panel is located.

FINAL BOOK APPROVAL

*Signing below indicates all project furniture quantities, colors, laminates, paint, graphic content & all other design elements have been reviewed and will receive no additional revisions. Any revisions requested beyond final book approval will incur additional charges and extended lead times.

**Client indicates an understanding that materials, colors, and artwork in this book are digital representations only and there may be variation in appearance due to screen calibration and/or color print anomalies.

Print Name: _____ Title: _____

Signature: _____ Date: _____



TERMS & CONDITIONS

TRASH REMOVAL

Dumpsters and trash haul away are not part of any provided installation pricing. Any waste, dunnage or packaging materials from delivery and installation will be compacted and neatly left on site. If dumpsters are required, special arrangements will be made with costs included on quote.

NEW or REMODEL PROJECTS

Palmer Hamilton is NOT responsible for site verifications unless they have entered into a design agreement contract with the customer. Dealer/end-user takes full responsibility of ensuring furniture and décor will fit. Please *verify* room dimensions prior to ordering. If drawing was scaled, traced or copied, please field verify all room dimensions for accuracy. If field dimensions can not be obtained, late shipments may occur.

Do not scale off these plans. If scaled plans are needed, please contact the project manager.

Palmer Hamilton is not responsible for changes, or deletions not reviewed and approved in advanced by Palmer Hamilton.

If half-walls or furnishings are to be clipped-down to floor, the Dealer/End-user is responsible to inform Palmer Hamilton of the locations. Palmer Hamilton is not responsible or liable for any electrical or plumbing that may be in the floors.

Please advise Palmer Hamilton if there is Asbestos in or around the location of the installation.

ADA COMPLIANT SEATING

A minimum of 5% but not less than one table shall be placed for wheelchair compliance. Palmer Hamilton is not responsible if the client has requested to provide less than this number in their facility. It is the responsibility of the end user to meet the compliancy standards.

It is also the responsibility of the end user to know their fire code capacity limits.

ELECTRICAL

Palmer Hamilton will suggest and supply the light fixtures if requested by the customer.

Palmer Hamilton installers do not install light fixtures as our installers are not electrical contractors and do not hold local licenses. School is responsible for all wiring and hooking up of the light fixtures. Palmer Hamilton will supply a lighting fixture plan of requested locations for the Schools electrician to use for placement of lighting fixtures

WINDOWS

School is responsible for any/all repair of window glass, trim and window caulking if necessary, prior to the installation.

School is responsible for cleaning of windows for window cling installation. If windows are not cleaned prior to installation, Palmer Hamilton will assess an additional charge for cleaning.

School is responsible for removing any window treatments that are not staying in new design.

WALLS

School is responsible for cleaning walls of any and all hooks, bulletin boards not remaining in design, loose wiring, removable clocks, conduit if not necessary.

Repair/Patching of any broken drywall and cracks in CMU, prior to installation.

Any newly constructed walls must be primed and painted prior to installation.

Any painting that is not supplied by Palmer Hamilton needs to be completed fourteen (14) days prior to our installation to properly cure.

CEILING

Palmer Hamilton does not sell or install standard ceiling tiles. Palmer Hamilton will remove or replace tiles if it is part of a décor item only. Our installers will only install any décor that might be attached to the ceiling and not to the tile grid for safety reasons as required.

FLOORING

Palmer Hamilton may specify a suggested flooring, but takes no liability in regard to floor performance, installation, and/or upkeep.

Any new flooring must be completed fourteen (14) days prior to installation to allow ample curing time of adhesives, and cleaning of flooring must also be completed prior to Palmer Hamilton installers being onsite for installation.

If Nonstandard glides are needed, it is the responsibility of the end-user to inform Palmer Hamilton of the type needed and cost will be added to the quote.

Vinyl Base trim must be completed prior to Palmer Hamilton furniture installation, unless the decision was made during the design phase by the client to have Palmer Hamilton installers install the base trim.

EXISTING EQUIPMENT AND FURNITURE

Please remove all equipment and furniture that is not to be in the new design plan prior to Palmer Hamilton's arrival.

I agree to terms & conditions

Signature _____ Date: _____

