

# MAINTENANCE ORDINARY UPKEEP - PLUMBING AND FINISHES REPAIR WORK ( NOT AN ACCESSIBILITY UPGRADE ) AT

## SILVERWOOD ELEMENTARY SCHOOL 1649 CLAYCORD AVE., CA 94521



### MT DIABLO UNIFIED SCHOOL DISTRICT - CONTRA COSTA COUNTY



1936 Carlotta Dr.,  
Concord, CA 94519



Architecture • Planning • Interiors

3211 Romina Way  
Lafayette, California 94549  
925.949.8333 tel.

STRUCTURAL ENGINEER  
TSA STRUCTURAL ENGINEERS

433 AIRPORT BLVD., #106E  
BURLINGAME, CA 94010  
TEL. (650) 620-9555

### ADMINISTRATIVE REQUIREMENTS

D.S.A. FILE No. 7-H5  
PART 1, TITLE 24, C.C.R.  
P.T.N. XXX  
A. ADDENDA AND CONSTRUCTION CHANGE DOCUMENTS AS PER SECTION 4-338: NO WORK SHALL COMMENCE UNTIL APPROVED BY DSA

B. INSPECTOR APPROVED BY DSA (CLASS-3 MIN.)

C. INSPECTOR AND CONTINUOUS INSPECTION OF WORK PER SECTION 4-333(b) AND 4-342

D. TEST AND TESTING LABORATORY PER SECTION 4-335 (OWNER SHALL PAY THE TESTING LABORATORY)

E. SPECIAL INSPECTION PER SECTION 4-333(c)

F. CONTRACTOR SHALL SUBMIT VERIFIED REPORT (FORM DSA 6) PER SECTION 4-336 & 4-343(C)

G. ADMINISTRATION OF CONSTRUCTION PER PART 1, TITLE 24, C.C.R., DUTIES OF ARCHITECT, STRUCTURAL ENGINEER OR PROFESSIONAL ENGINEER PER SECTION 4-333(e) AND 4-341; DUTIES OF CONTRACTOR PER SECTION 4-343; VERIFIED REPORTS (FORM DSA 6) PER SECTION 4-336

H. A COPY OF PART 1, 2, 3, 4 & 5 OF TITLE 24 SHALL BE KEPT & AVAILABLE IN THE FIELD DURING CONSTRUCTION

K. DSA SHALL BE NOTIFIED ON START OF CONSTRUCTION & PRIOR TO PLACEMENT OF CONCRETE, PER SEC. 4-331

L. SUPERVISION OF CONSTRUCTION BY DSA PER SECTION 4-334

L. DSA IS NOT SUBJECT TO ARBITRATION

M. PER SECTION 4-317(C), PART 1, TITLE 24, C.C.R.: THE INTENT OF THESE DRAWINGS AND SPECIFICATIONS IS THAT THE WORK OF THE ALTERATION, REHABILITATION OR RECONSTRUCTION IS TO BE IN ACCORDANCE WITH TITLE 24, C.C.R.. SHOULD ANY EXISTING CONDITIONS SUCH AS DETERIORATION OR NON COMPLYING CONSTRUCTION BE DISCOVERED WHICH IS NOT COVERED BY THE CONSTRUCTION DOCUMENTS WHEREIN THE FINISHED WORK WILL NOT COMPLY WITH TITLE 24, C.C.R. A CONSTRUCTION CHANGE DOCUMENT (CCD) OR A SEPARATE SET OF PLANS AND SPECIFICATIONS, DETAILING AND SPECIFYING THE REQUIRED WORK SHALL BE SUBMITTED TO AND APPROVED BY THE DSA BEFORE PROCEEDING WITH THE WORK.

N. THE INTENT OF THESE DRAWINGS IS TO MODIFY THE FACILITY FOR ACCESSIBILITY IN ACCORDANCE WITH TITLE 24, CALIFORNIA CODE OF REGULATIONS. SHOULD ANY CONDITIONS DEVELOP NOT COVERED BY THE CONTRACT DOCUMENTS SUCH THAT THE FINISHED WORK WILL NOT COMPLY WITH SAID TITLE 24, CALIFORNIA CODE OF REGULATIONS, A CONSTRUCTION CHANGE DOCUMENT (CCD) DETAILING AND SPECIFYING THE REQUIRED WORK SHALL BE SUBMITTED TO AND APPROVED BY THE DSA-AC BEFORE PROCEEDING WITH THE WORK.

O. CHANGES TO THE APPROVED DRAWINGS AND SPECIFICATIONS SHALL BE MADE BY ADDENDA OR CONSTRUCTION CHANGE DOCUMENT (CCD) APPROVED BY DSA AS REQUIRED BY SECTION 4-338, PART 1, TITLE 24, C.C.R.

P. A "DSA" CERTIFIED PROJECT INSPECTOR EMPLOYED BY THE DISTRICT (OWNER) AND APPROVED BY THE DSA SHALL PROVIDE CONTINUOUS INSPECTION OF THE WORK. THE DUTIES OF THE INSPECTOR ARE DEFINED IN SECTION 4-342, PART 1, TITLE-24 C.C.R.

Q. A "DSA" ACCEPTED TESTING LABORATORY DIRECTLY EMPLOYED BY THE DISTRICT (OWNER) SHALL CONDUCT ALL THE REQUIRED TESTS AND INSPECTIONS OF THE PROJECT.

### SCOPE OF WORK

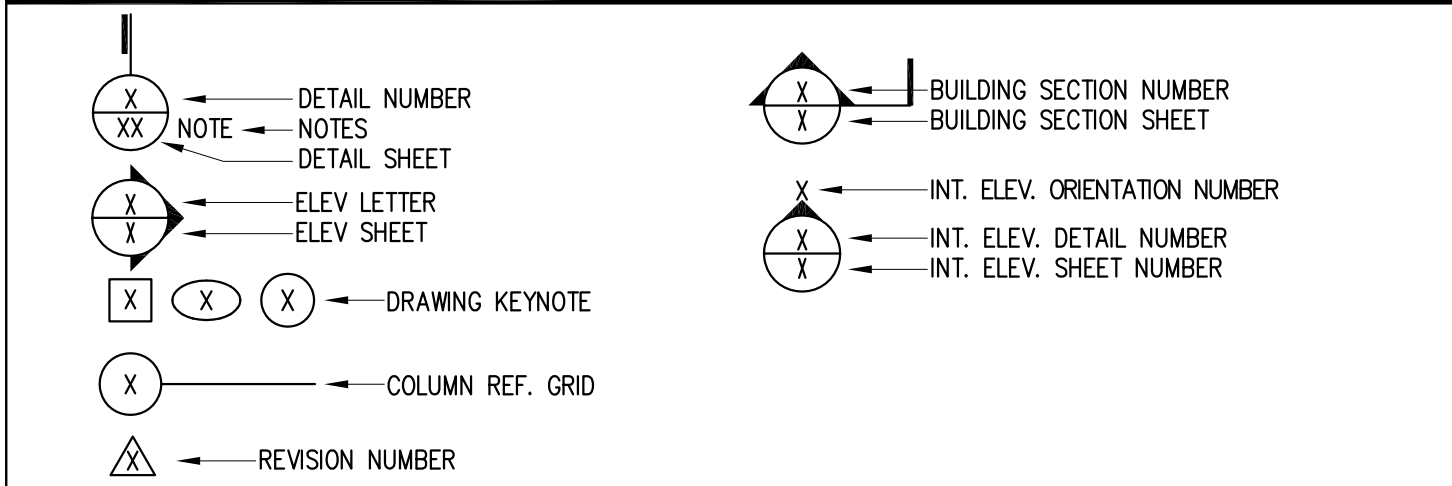
THE SCOPE OF WORK OF THIS PROJECT IS LIMITED TO THE SCHOOL'S RESTROOM ( BOYS AND GIRLS ) AT THE YARD TOILET ( BUT IS NOT LIMITED ) TO INSTALLING NEW TOILET FIXTURES AND ACCESSORIES, REPLACING (E) CERAMIC TILES WITH (N), (N) EXHAUST FAN, PAINTING AND GENERAL MAINTENANCE AND UPKEEP OF THE RESTROOMS. THIS SCOPE IS NOT AN ACCESS COMPLIANCE UPGRADE.

ACCESS NOTE:  
PER 2016 CBC, SECTION 11B, CHAPTER 11B-202.4 EXCEPTION:

PROJECTS CONSISTING ONLY OF HEATING, VENTILATION, AIR CONDITIONING, RE-ROOFING, ELECTRICAL WORK NOT INVOLVING PLACEMENT OF SWITCHES AND RECEPTACLES, COSMETIC WORK THAT DOES NOT AFFECT ITEMS REGULATED BY THIS CODE, SUCH AS PAINTING, EQUIPMENT NOT CONSIDERED TO BE PART OF THE ARCHITECTURE OF THE BUILDING OR AREA, SUCH AS COMPUTER TERMINALS AND OFFICE EQUIPMENT SHALL NOT BE REQUIRED TO COMPLY WITH SECTION 11B-202.4 UNLESS THEY AFFECT THE USABILITY OF THE BUILDING OR FACILITY.

NOTE: THE SCOPE OF WORK IS LIMITED TO MAINTENANCE / FINISHES AND REPLACEMENT OF FIXTURES

### SYMBOLS



### APPLICABLE CODES WITHIN LIMIT OF WORK

Code	Description	Year
2016 California Administrative Code (CAC), Part 1, Title 24 CCR*		
2016 California Building Code (CBC), Part 2, Title 24 CCR (2015 International Building Code, Vol. 1 & 2, and 2016 California amendments)		
2016 California Electrical Code (CEC), Part 3, Title 24 CCR (2014 National Electrical Code and 2016 California Amendments)		
2016 California Mechanical Code (CMC), Part 4, Title 24 CCR (2015 IAPMO Uniform Mechanical Code and 2016 California amendments)		
2016 California Plumbing Code (CPC), Part 5, Title 24 CCR (2015 IAPMO Uniform Plumbing Code and 2016 California amendments)		
2016 California Energy Code (CEC), Part 6, Title 24 CCR		
2016 California Fire Code (CFC), Part 9, Title 24 CCR (2015 International Fire Code and 2016 California Amendments)		
2016 California Existing Building Code (CEBC), Part 10, Title 24 CCR (2015 International Existing Building Code and 2016 California Amendments)		
2016 California Green Building Standards Code (CALGreen), Part 11, Title 24 CCR		
2016 California Referenced Standards Code, Part 12, Title 24 CCR		
Title 19 CCR, Public Safety, State Fire Marshal Regulations		
2013 ASME A17.1/CSA B44-13 Safety Code for Elevators and Escalators		
NATIONAL STANDARDS		
NFPA 13	Standard for the Installation of Sprinkler Systems (CA amended)	2016 Edition
NFPA 14	Standard for the Installation of Standpipe and Hose Systems	2013 Edition
NFPA 17	Standard for Dry Chemical Extinguishing Systems	2013 Edition
NFPA 17A	Standard for Wet Chemical Extinguishing Systems	2013 Edition
NFPA 20	Standard for the Installation of Stationary Pumps for Fire Protection	2016 Edition
NFPA 22	Standard for Water Tanks for Private Fire Protection	2013 Edition
NFPA 24	Standard for the Installation of Private Fire Service Mains and Their Appurtenances	2016 Edition
NFPA 72	National Fire Alarm and Signaling Code (CA amended)	2016 Edition
NFPA 80	Standard for Fire Doors and Other Opening Protectives	2016 Edition
NFPA 2001	Standard on Clean Agent Fire Extinguishing Systems	2015 Edition
UL 300	Standard for Fire Testing of Fire Extinguishing Systems for Protection of Commercial Cooking Equipment	2005 (R2010)
UL 464	Audible Signaling Devices for Fire Alarm and Signaling Systems, Including Accessories	2003 Edition
UL 521	Standard for Heat Detectors for Fire Protective Signaling Systems	1999 Edition
UL 1971	Standard for Signaling Devices for the Hearing Impaired	2002 Edition
ICC 300	Standard for Bleachers, Folding and Telescopic Seating, and Grandstands	2012 Edition

### PROJECT REQUIREMENTS

- ALL DEMOLITION & CONSTRUCTION WORK SHALL COMPLY WITH 2013 CFC CHAPTER 33 "FIRE SAFETY DURING CONSTRUCTION AND DEMOLITION"
- EMERGENCY VEHICLE ACCESS ROADS AND ON-SITE FIRE HYDRANTS SHALL BE IN SERVICE AND OPERABLE PRIOR TO LOADING THE SITE WITH COMBUSTIBLE MATERIAL.
- EXISTING ACCESSIBLE ROUTES TO ALL FACILITIES AND BUILDING THAT ARE OPERATIONAL DURING CONSTRUCTION PHASE SHALL REMAIN UNOBSTRUCTED, SAFE AND USABLE BY PEOPLE WITH DISABILITIES.
- ALL MATERIAL AND WORKMANSHIP SHALL CONFORM TO THE CURRENT EDITION OF THE CALIFORNIA BUILDING CODE, CMC, CPC, CEC AND ALL APPLICABLE LOCAL CODES, ORDINANCES, AND STATE AMENDMENTS.
- THE CONTRACTOR SHALL CHECK ALL DRAWINGS IMMEDIATELY UPON THEIR RECEIPT AND SHALL VERIFY ALL DIMENSIONS AND SITE CONDITIONS BEFORE STARTING WORK. ARCHITECTS AND ENGINEERS SHALL BE NOTIFIED OF ANY DISCREPANCIES.
- WHEN DETAILS LABELED "TYPICAL" OR "SIMILAR" ARE GIVEN ON DRAWINGS, THE CONTRACTOR SHALL APPLY THE INTENT OF THE DETAIL TO ALL SIMILAR CONDITIONS THAT IT APPLIES.
- CONNECTIONS AND IMPLIED CONSTRUCTION ASSEMBLIES THAT ARE NOT SPECIFICALLY DESCRIBED OR DETAILED SHALL BE CONSTRUCTED USING STANDARD CONSTRUCTION PRACTICES IN COMPLIANCE WITH THE GOVERNING CODES AND ORDINANCES.

### ABBREVIATIONS

⊙	At	JAN.	Janitor
A.C.T.	Acoustic Ceiling Tile	JST.	Joist
ACS	Accessible	JT.	Joint
ADJ.	Adjacent, Adjustable	LAM.	Laminated
A.F.F.	Above Finish Floor	LEV.	Level
AL.	Aluminum	LOC.	Location
A.T.C.	Acoustic Tile Ceiling	MAX.	Maximum
BD.	Board	M.D.F.	Medium Density Fiberboard
BLKG.	Blocking	MECH.	Mechanical
BM.	Beam	MEZZ.	Mezzanine
B.O.	Bottom Of	MFR.	Manufacturer
BOT.	Bottom	MIN.	Minimum
BRG.	Bearing	MISC.	Miscellaneous
BTWN.	Between	MTD.	Mounted
CAB.	Cabinet	MTL.	Metal
CER.	Ceramic	(N)	New
C.J.	Control Joint	N.I.C.	Not In Contract
CL.	Center Line	NO.	Number
CL.	Closet	NOM.	Nominal
CLG.	Ceiling	N.T.S.	Not To Scale
CLR.	Clear	O.C.	On Center
C.M.U.	Concrete Masonry Unit	O.D.	Outside Diameter
COL.	Column	OPNG.	Opening
CONC.	Concrete	OPP.	Opposite
CONST.	Construction	O.H.	Oval Head
CONT.	Continuous	P.H.W.S.	Power Head Wood Screw
COORD.	Coordinate	P. LAM.	Plastic Laminate
C.R.	Cold Rolled	R	Property Line
C.T.	Ceramic Tile	PL.	Plate
CTR	Counter	PLY.	Plywood
CTS&K.	Countersink	PLYWD.	Plywood
DBL.	Double	PT.	Paint
DCA.	Drilled Concrete Anchor	PTD.	Painted
DET.	Detail	PTN.	Partition
D.F.	Drinking Fountain	Q.T.	Quarry Tile
DIA.	Diameter	QTY.	Quantity
DIM.	Dimension	R.	Radius
DISP.	Dispenser	RAD.	Radius
DN.	Down	R.D.	Roof Drain
DR.	Door	RE:	Refer To
DTL.	Detail	REQ.	Required/Requirements
DWG.	Drawing	RES.	Resilient
(E)	Existing	RESIL.	Resilient
EA.	Each	R.H.	Round Head
E.J.	Expansion Joint	R.H.W.S.	Round Head Wood Screw
EL.	Elevation	RM.	Room
ELEC.	Electrical	R.O.	Rough Opening
EO	Electrical Outlet	S.C.	Solid Core / Seat Cover
EQ.	Equal	SCHED.	Schedule
EQUIP.	Equipment	SECT.	Section
E.W.C.	Electric Water Cooler	S.E.D.	See Electrical Drawings
EXIST.	Existing	SFD	Smoke Fire Damper
EXP.	Expansion	SHT.	Sheet
EXP. JT.	Expansion Joint	SIM.	Similar
EXT.	Exterior	S.I.M.D.	See Mechanical Drawings
F.D.	Floor Drain	S.M.S.	Sheet Metal Screw
F.E.	Fire Extinguisher	S.P.D.	See Plumbing Drawings
F.E.C.	Fire Extinguisher Cabinet	S.S.	Stainless Steel
F.H.	Flat Head	S.S.D.	See Structural Drawings
F.H.C.	Fire Hose Cabinet	S.T.S.	Self-Drilling, Self-Tapping
FIN.	Finish	S.M.S.	Sheet Metal Screw
FLR.	Floor	STD.	Standard
FLUOR.	Fluorescent	STL.	Steel
F.O.	Face Of	STRUCT.	Structural
F.O.S.	Face Of Stud	SUSP.	Suspended
F.O.W.	Face Of Wall	THK.	Thick
F.S.	Full Size	T.O.	Top Of
FURR.	Furring	T.O.C.	Top Of Concrete
GA.	Gauge	T.O.S.	Top Of Steel
GALV.	Galvanized	TYP.	Typical
G.B.	Grab Bar	U.O.N.	Unless Otherwise Noted
G.D.	Garbage Disposal	UP.	Upper
GYP.	Gypsum Wallboard	V.C.T.	Vinyl Composition Tile
H.B.	Hose Bibb	VEN.	Veneer
H.C.	Hollow Core	VER.	Verify
HDWD.	Hardwood	VEST.	Vestibule
H.M.	Hollow Metal	V.I.F.	Verify In Field
HR.	Hour	W/	With
HT.	Height	W.C.	Wall Covering
I.D.	Inside Diameter	WD.	Wood
I.F.	Inside Face	W.R.	Water Resistant
INS.	Insulation	WR	Waste Receptacle
INT.	Interior	W.S.	Wood Screw
INTER.	Intermediate		

### DRAWING INDEX

A-000	TITLE SHEET
A-001	SITE PLAN / ACCESS INFO
A-200	DEMOLITION AND PROPOSED PLANS AT YARD TOILET
A-300	GENERAL CONSTRUCTION NOTES & SCHEDULES
A-500	DETAILS
A-510	DETAILS
SSP	STRUCTURAL SPECIFICATIONS

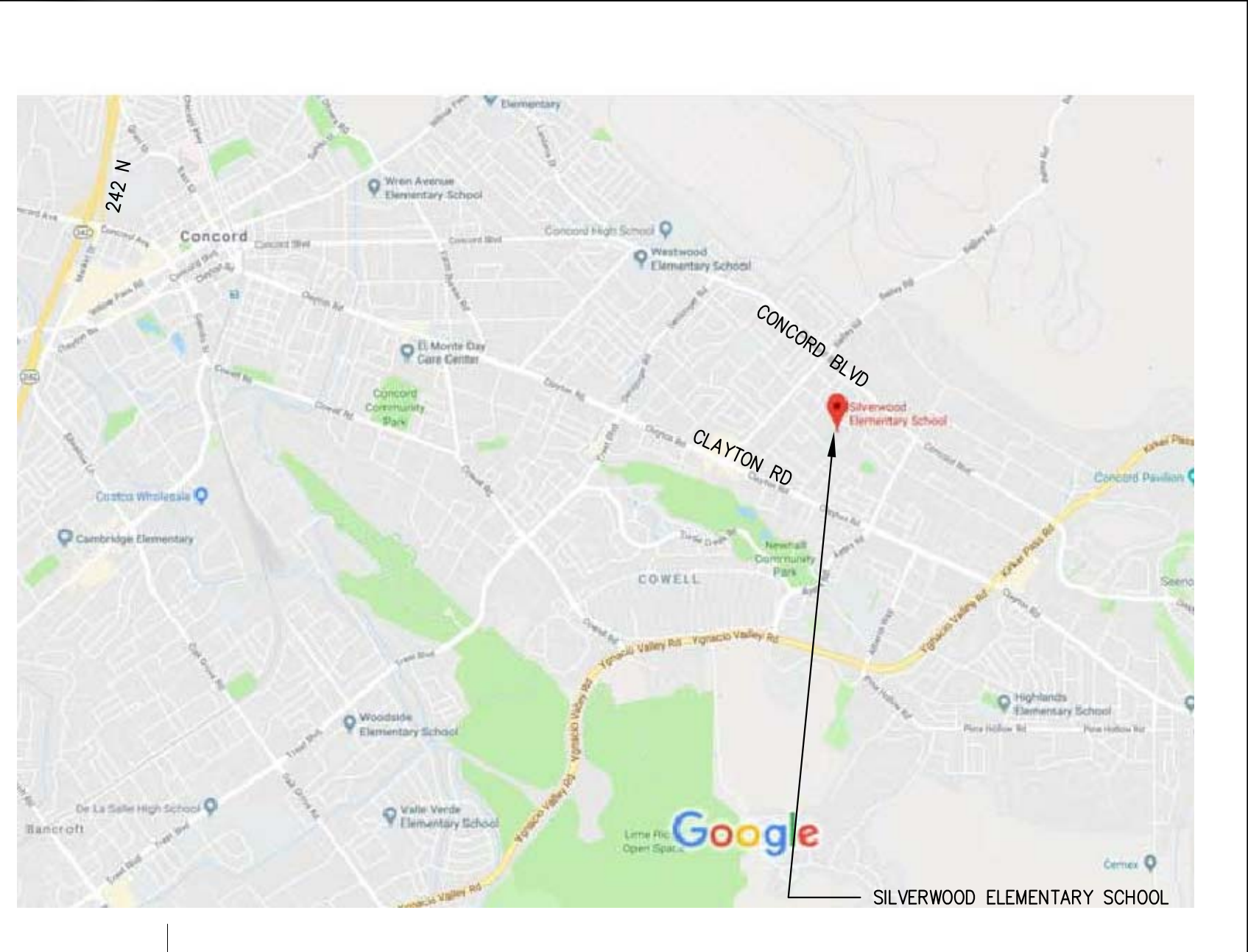
INCLUDED FOR DSA REFERENCE ONLY - AS BUILT DRAWINGS

THE DRAWINGS AND/OR SPECIFICATIONS LISTED BELOW HAVE BEEN PREPARED BY OTHER DESIGN PROFESSIONALS OR CONSULTANTS WHO ARE LICENSED AND/OR AUTHORIZED TO PREPARE SUCH DRAWINGS IN CALIFORNIA. THESE DOCUMENTS HAVE BEEN EXAMINED BY ME FOR DESIGN INTENT AND THEY APPEAR TO MEET THE APPROPRIATE REQUIREMENTS OF TITLE 24 AND THE CALIFORNIA CODE OF REGULATIONS. THE ITEMS LISTED BELOW HAVE BEEN COORDINATED WITH MY PLANS AND SPECIFICATIONS AND ARE ACCEPTABLE FOR INCORPORATION INTO THE CONSTRUCTION OF THIS PROJECT FOR WHICH I AM THE INDIVIDUAL DESIGNATED TO BE IN GENERAL RESPONSIBLE CHARGE.

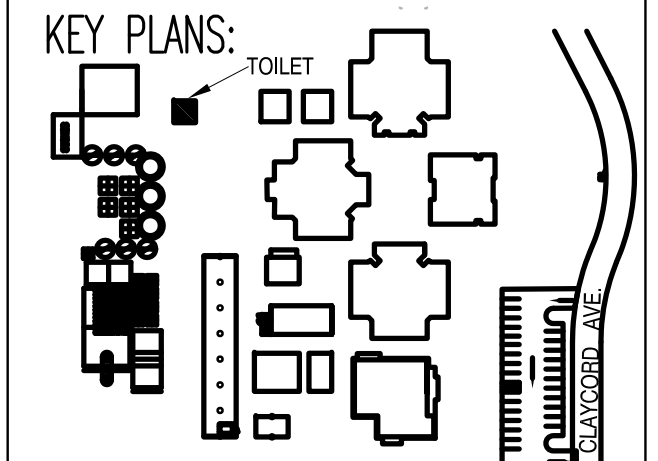
NONE

H. MAX PEYVAN \_\_\_\_\_ DATE \_\_\_\_\_  
 LICENSE NUMBER: C-27121 EXPIRATION DATE: 09/30/2019

### PROJECT LOCATION



PROJECT TITLE:  
**MAINTENANCE WORK  
 PLUMBING AND FINISHES  
 AT STUDENTS'  
 RESTROOMS  
 SILVERWOOD  
 ELEMENTARY SCHOOL**



REVISIONS:

date	description	symbol
	DISTRICT REVIEW	
1/30/2018	BID SUBMITTAL	

PHD ARCHITECTS JOB #  
**17-215**

SCALE:  
**AS NOTED**

DATE:  
**1/30/18**

SHEET NAME & NUMBER:  
**TITLE SHEET**  
**A-000**

# BID & CONSTRUCTION REQUIREMENTS

THE CONTRACTOR IS REQUIRED TO VERIFY IN FIELD ACTUAL EXISTING EXPOSED CONDITION AND EXTENT OF DEMOLITION AND CONSTRUCTION REQUIRED TO PERFORM THE JOB PRIOR TO BID - NOT ALL EXISTING CONDITIONS ARE SHOWN ON THE DRAWINGS.

THE ABOVE IS APPLICABLE FOR THE EXTERIOR AND THE INTERIOR OF THE BUILDING WITHIN THE AREA OF THE SCOPE OF WORK.




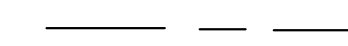

IT IS UNDERSTOOD THAT THESE APPROVED DRAWINGS ARE SHOWING THE INTENT OF THE SCOPE OF WORK AND ASSUMPTIONS HAVE BEEN MADE. CONTINGENCY FOR REMOVAL/RE-ROUTING, RE-CONSTRUCTING, RE-SIZING EXISTING INTERIOR & EXTERIOR UTILITY LINES SUCH AS (BUT NOT LIMITED TO) GAS, SEWER, WATER, DRAINS, CLEAN-OUTS, WALL & CEILING MOUNTED FIRE ALARM EQUIPMENT, MONITOR DEVICES & SENSORS, LIGHTING FIXTURES & EQUIPMENT, ELECTRICAL BOXES, PLUGS & SWITCHES AND RELATED CABLES & CONDUITS (CONCEALED AND NOT) MUST BE INCLUDED ON THE BASE BID. THE DISTRICT HAS MADE AVAILABLE ALL AS-BUILT INFORMATION FOR THE CONTRACTOR TO ASSES SCOPE AS ACCURATE AS POSSIBLE PRIOR TO FINAL BID.

WITH THE ABOVE THE CONTRACTOR IS ADVISED AND AGREES THAT THE DISTRICT WILL NOT NEGOTIATE ADDITIONAL COMPENSATIONS ON ITEMS NOT SHOWN ON THE DRAWINGS BUT, VISIBLE AND/OR EXPOSED AND REASONABLY ASSUMED FROM THE PROJECT SCOPE AND OBVIOUSLY REQUIRED TO BE PERFORMED IN ORDER TO ATTAIN A COMPLETE AND FINISHED PRODUCT

# EXISTING BUILDING DATA

BUILDING	DESCRIPTION	AREA	OCC.	CONTS. TYPE	DSA #
TOILET BLDG	BOYS' TOILET	200 SQ. FT	E-1	V-B	28782
	GIRLS' TOILET	200 SQ. FT	E-1	V-B	8342

# SHEET LEGEND

	SCOPE OF WORK		(E) FIRE HYDRANT
	NO WORK IS PROPOSED IN (E) BUILDING		(E) PROPERTY LINE
			(E) CHAIN LINK FENCE & GATE



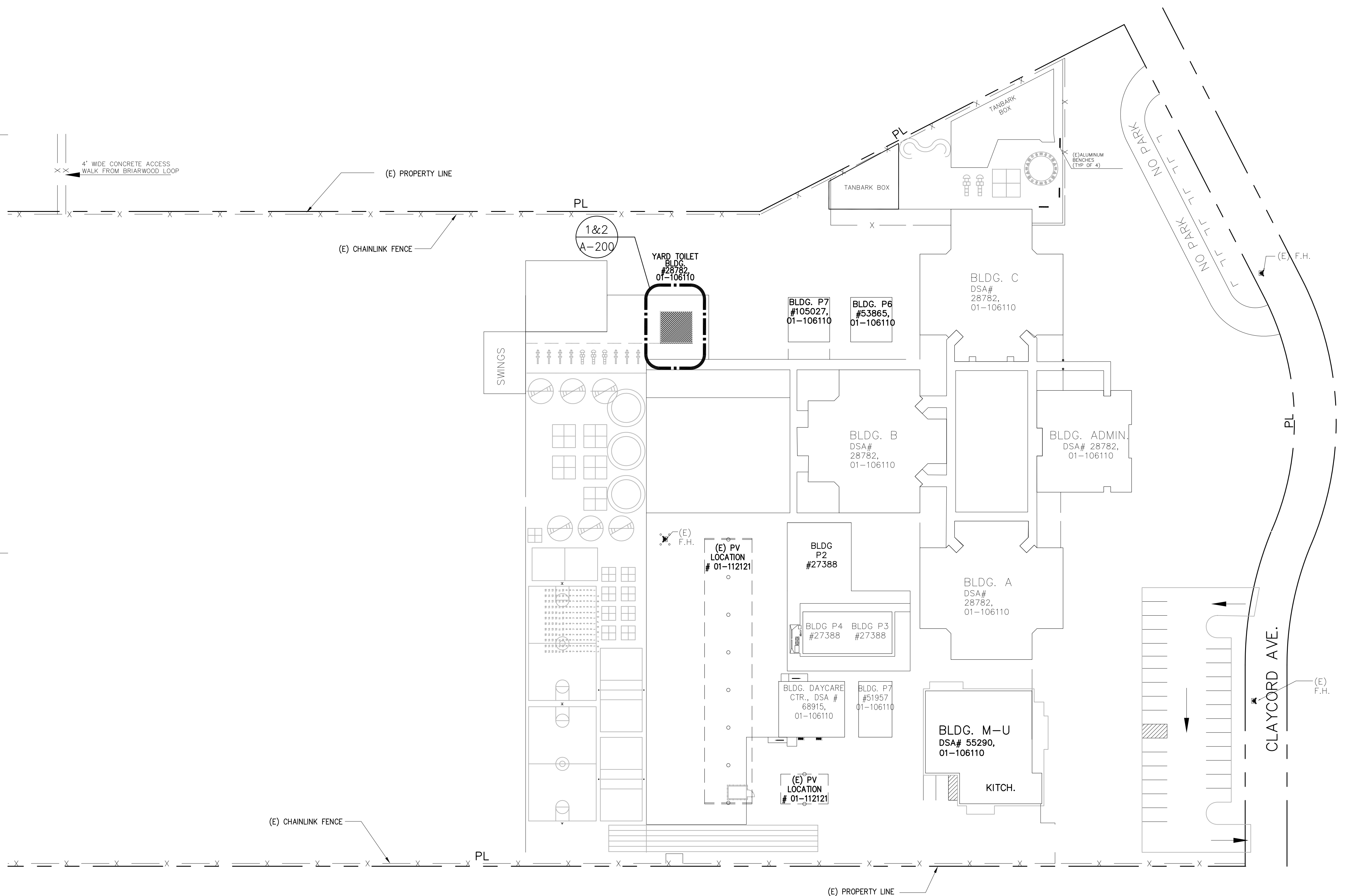
1936 Carlotta Dr.,  
Concord, CA 94519



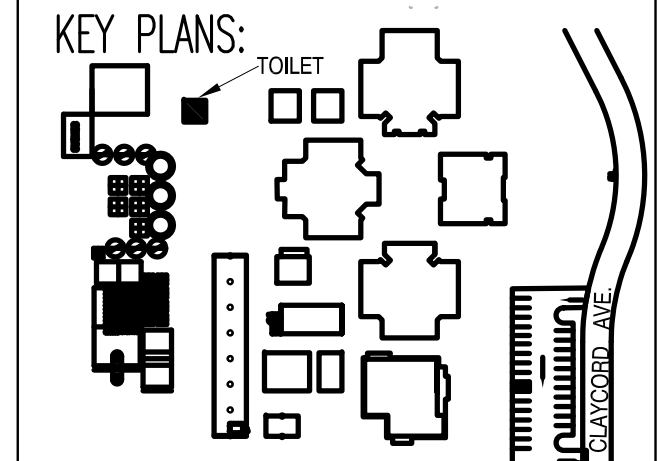
ARCHITECTS, INC.

Architecture • Planning • Interiors  
3211 Ronino Way  
Lafayette, California 94549  
925.949.8333 tel.

STRUCTURAL ENGINEER  
TSA STRUCTURAL ENGINEERS  
433 AIRPORT BLVD., #106E  
BURLINGAME, CA 94010  
TEL. (650) 620-9555



PROJECT TITLE:  
MAINTENANCE WORK  
PLUMBING AND FINISHES  
AT STUDENTS'  
RESTROOMS  
SILVERWOOD  
ELEMENTARY SCHOOL



REVISIONS:

date	description	symbol
	DISTRICT REVIEW	
1/30/2018	BID SUBMITTAL	

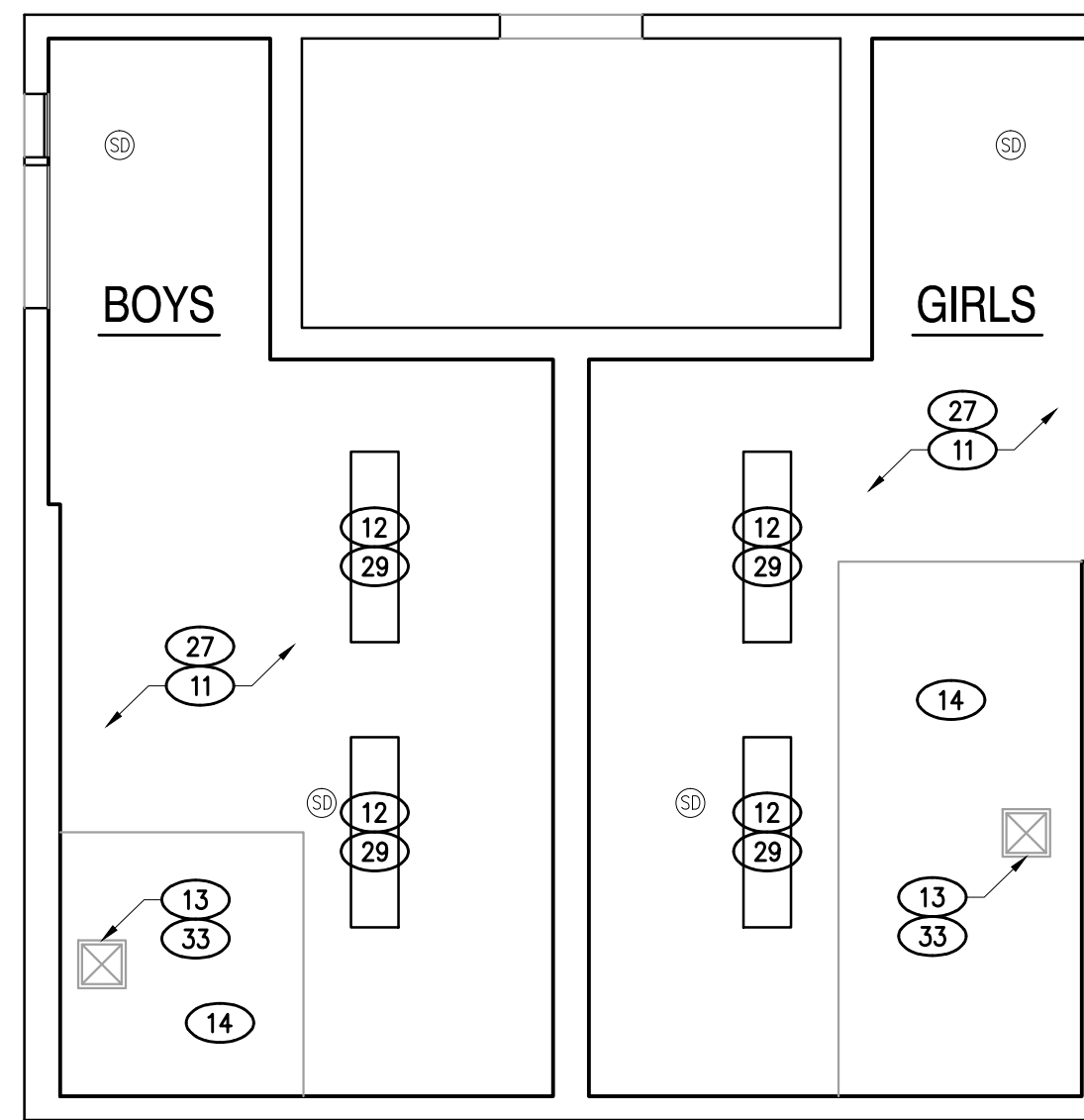
PHD ARCHITECTS JOB #  
17-215

SCALE:  
AS NOTED

DATE:  
1/30/18

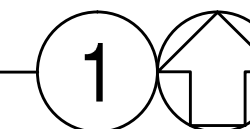
SHEET NAME & NUMBER:  
SITE PLAN /  
ACCESS INFO.  
**A-001**

SILVERWOOD ES - EXISTING SITE PLAN  
SCALE: 1" = 40' - 0"



BOYS' AND GIRLS' TOILET ROOM DEMOLITION PLAN

SCALE: 1/4"=1'-0"

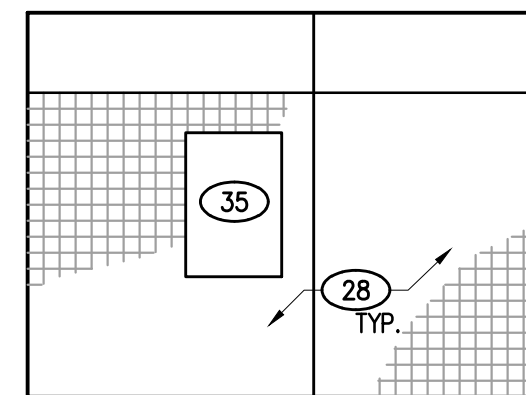


DEMOLITION KEYNOTES

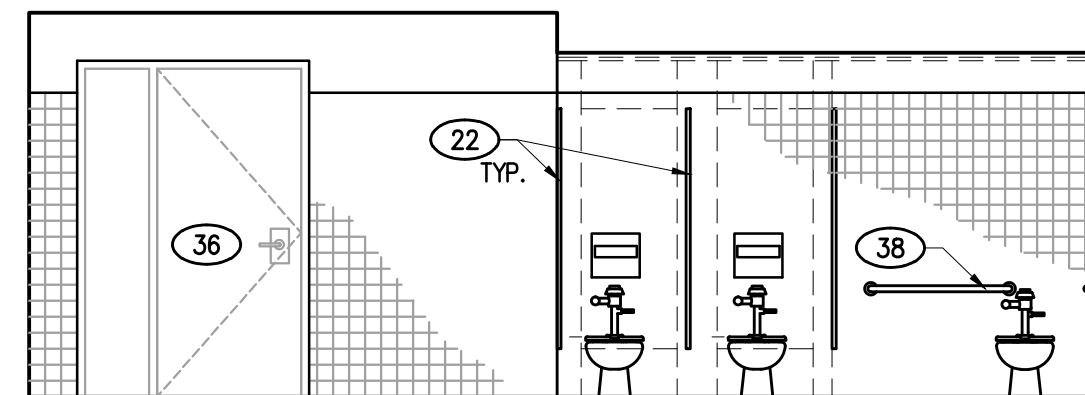
- 1 REMOVE (E) 4X4 WALL TILES FLR TO CEILING AND ASSEMBLY AS REQUIRED TO PREPARE FOR (N) CERAMIC WALL TILES. INCLUDE ALL DEMOLITION REQUIRED FOR THE INSTALLATION OF (N) BLOORING FOR TOILET ACCESSORIES. CUT, CAP AND PROTECT (E) PLUMBING / ELECTRICAL LINES AS NEEDED.
- 2 DEMOLISH THE (E) FINISH FLOOR ASSEMBLY (INCLUDING THE GROUT BED) & BASE ASSEMBLY AS REQUIRED. REMOVE ALL FLOOR MOUNTED CLEAN-OUT COVERS & DRAIN (FOR REPLACEMENT). (NOTES: THE GROUT BED THICKNESS VARIES, MIN. 1/2". THE EXISTING FINISHED TILE FLOOR SLOPES TOWARDS THE DRAINS)
- 3 REMOVE ALL (E) TOILET ACCESSORIES & ASSEMBLY (AS APPLICABLE BUT NOT LIMITED TO): SOAP DISPENSER, PAPER DISPENSER, MIRROR, WASTE RECEPTACLE ETC.) - SALVAGE ACCESSORIES IN GOOD WORKING ORDER AND DELIVER TO DISTRICT MAINTENANCE OFFICE.
- 4 (E) TOILET PARTITIONS, TOILET PAPER DISPENSER, DOORS AND ASSEMBLY TO BE RE-INSTALLED.
- 5 REMOVE (E) LAVATORY & ASSEMBLY. SALVAGE ALL FAUCETS AND DELIVER TO DISTRICT MAINTENANCE OFFICE.
- 6 REMOVE (E) TOILET/URNAL FIXTURE & ASSEMBLY. SALVAGE ALL FLUSHMETERS AND DELIVER TO DISTRICT MAINTENANCE OFFICE.
- 7 REMOVE AND REINSTALLED (E) GRAB BAR.
- 8 REMOVE THE EXISTING FLOOR DRAIN STRAINER (TOP COVER) & PREPARE FOR NEW (V.I.F.) - MIN. 2 FLOOR DRAIN PER ROOM UNLESS OTHERWISE NOTED
- 9 REMOVE (E) SIGNAGE, PATCH & PAINT WALL & DOOR TO MATCH (E).
- 10 REMOVE (E) DRINKING FOUNTAIN AND DELIVER TO DISTRICT MAINTENANCE OFFICE.
- 11 (E) CEMENT PLASTER CEILING TO REMAIN.
- 12 REMOVE THE (E) LIGHT FIXTURES & ASSEMBLY. REPLACE WITH (N). REPLACE THE (E) LIGHT SWITCH CONTROL PLATE WITH NEW KEYLESS LIGHT SWITCH
- 13 DEMO (E) CEILING MOUNTED EXHAUST FAN & ALL RELATED ASSEMBLY FOR REPLACEMENT.
- 14 (E) DROP CEILING.

CONSTRUCTION KEYNOTES

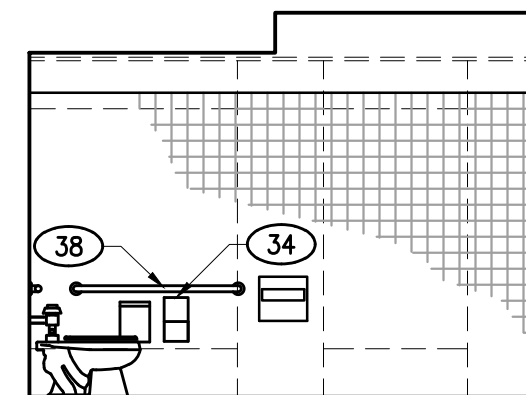
- NOTES:
1. ALL ITEMS INDICATED ON THE KEY NOTES ARE NEW UNLESS OTHERWISE NOTED
  2. CONSTRUCTION KEY-NOTES MUST BE COORDINATED WITH
- 21 DRINKING FOUNTAIN & RAILGUARD, PER  $\frac{1}{A.510}$
  - 22 REINSTALLED (E) TOILET PARTITIONS / DOORS AND ASSEMBLY. PROVIDE CONT. LEVELED, FINISHED BACKING FOR CONTINUOUS PARTITION VERTICAL ANCHORAGE.
  - 23 DOOR SIGN, PER  $\frac{3}{A.500}$
  - 24 ROOM ID. SIGN, PER  $\frac{11}{A.500}$
  - 25 CERAMIC TILE FLOOR SYSTEM (SLOPE 1/8" FT. MIN. TO 1/4" FT. MAX.) TO THE FLOOR DRAIN(S). NEW FLOOR NOT TO EXCEED 1:48 SLOPE IN ALL DIRECTIONS. FINISH FLOOR MUST BE SLIP RESISTANT FOR THE USE INTENDED.
  - 26 TOILET FIXTURE - SEE FIXTURE SCHEDULE  $\frac{-}{A.300}$
  - 27 WALL AND CEILING: MATCH EXISTING ASSEMBLY THICKNESS FOR PATCH, INCLUDE LEVELING (MUD) TO ACHIEVE PLANE & LEVEL 5 FINISH. SEE  $\frac{10}{A.500}$
  - 28 CERAMIC WALL TILES WITH COVED BASE, ALL WALLS @ 6"-6". PATCH OR MATCH (E) ASSEMBLY THICKNESS TO ACHIEVE LEVEL 5 FINISH. SEE  $\frac{10}{A.500}$  FINISH SCHEDULES AND DETAIL  $\frac{10}{A.500}$  FOR PATCHING.  $\frac{-}{A.300}$
  - 29 CEILING MOUNTED (NOT-SUSPENDED) LIGHT FIXTURE (14lb). INSTALL PER MANUFACT. RECOMMENDATIONS. CONNECT TO THE (E) WIRING. WHERE REQD., PATCH CEILING OR MATCH (E) ASSEMBLY THICKNESS TO ACHIEVE PLANE AND LEVEL 5 FINISH. SEE DETAIL  $\frac{10}{A.500}$  FOR PATCHING. MAINTAIN 12" FR. (E) SMOKE DETECTOR. SEE CUT SHEETS
  - 30 WHERE NOTED URINAL SCREEN (24" WIDE) @ URINAL. BRACE TO WALL & FLOOR WHERE NOTED PARTITION SCREEN (HEIGHT OF TOILET PARTITION) BRACE FLR TO CLG.
  - 31 PROVIDE DRAIN STRAINER (TOP COVER), FLUSH W/ FINISH FLOOR. MIN. 2 PER ROOM UN-SAME FOR C.O.
  - 32 PAPER TOWEL DISPENSER, SEE TOILET-FIXTURES SCHEDULE.
  - 33 EXHAUST FAN GRILLE AND ASSEMBLY PER CONST. NOTE # 1 A-300. EXHAUST FAN SWITCH TO INTERLOCK WITH KEYLESS LIGHT SWITCH (ON-ON).PATCH AND RE-CONSTRUCT THE ROOF AS REQD. (CLASS A MIN.)
  - 34 REINSTALLED (E) TOILET PAPER DISPENSER (STD. STALL)
  - 35 MIRROR
  - 36 REPAIR (E) DOOR/ FRAME AND LOUVERS LIKE NEW.
  - 37 OPEN POSITION DOOR SIGN. SEE  $\frac{12}{A.500}$
  - 38 REINSTALLED (E) GRAB BAR. SEE A.300 ACCESS FOR MOUNTING HT



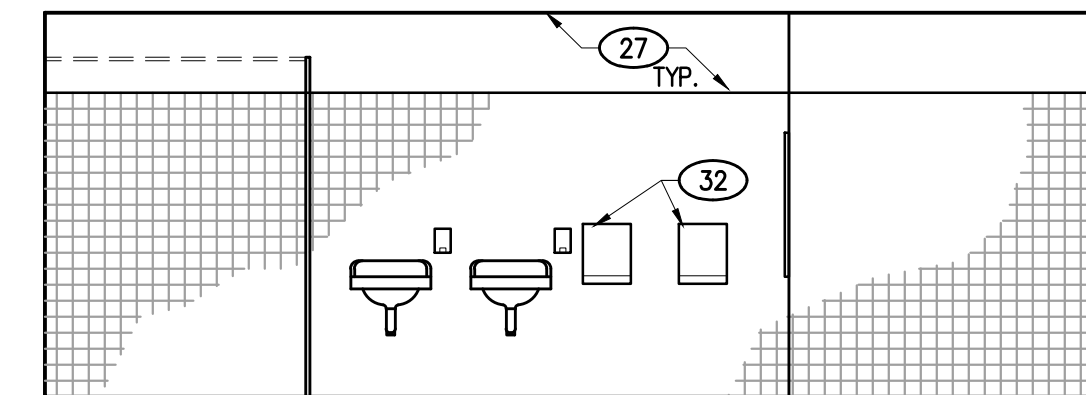
A



B



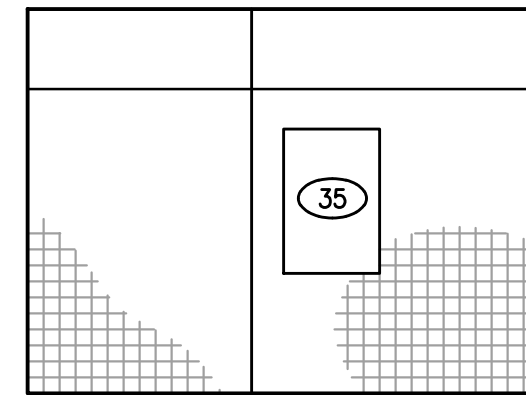
C



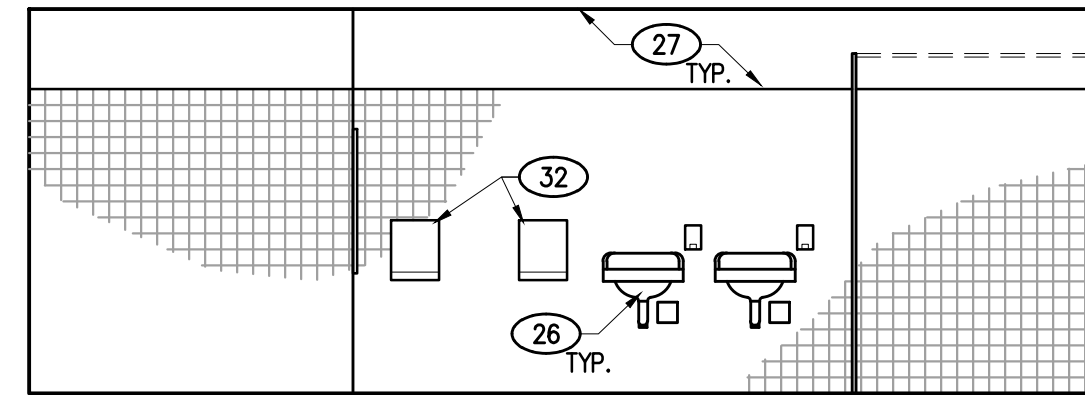
D

GIRLS' TOILET ROOM INTERIOR ELEVATIONS

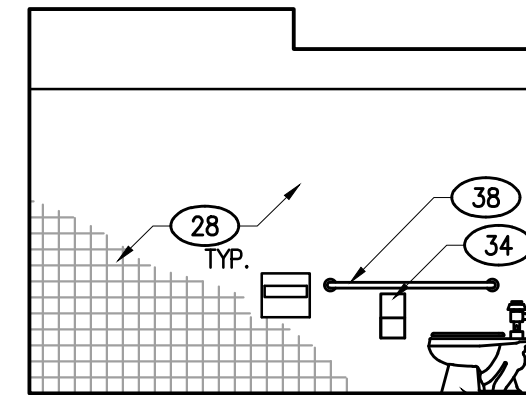
SCALE: 1/4"=1'-0"



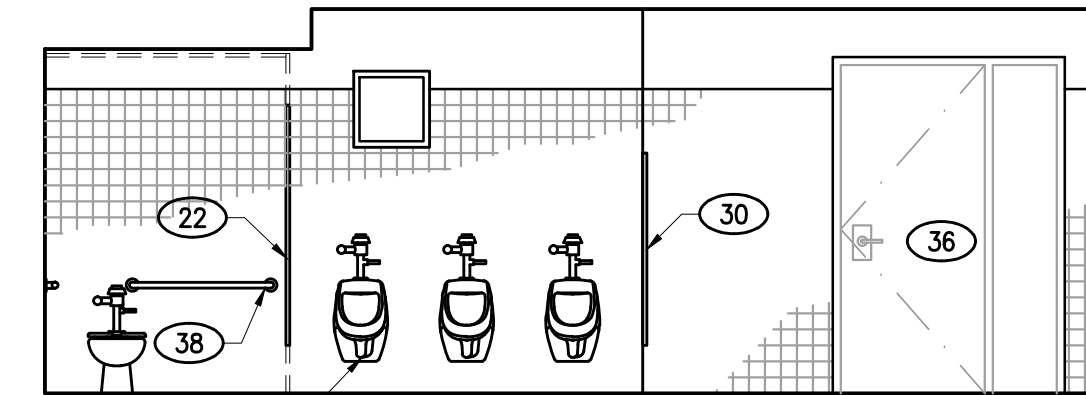
A



B



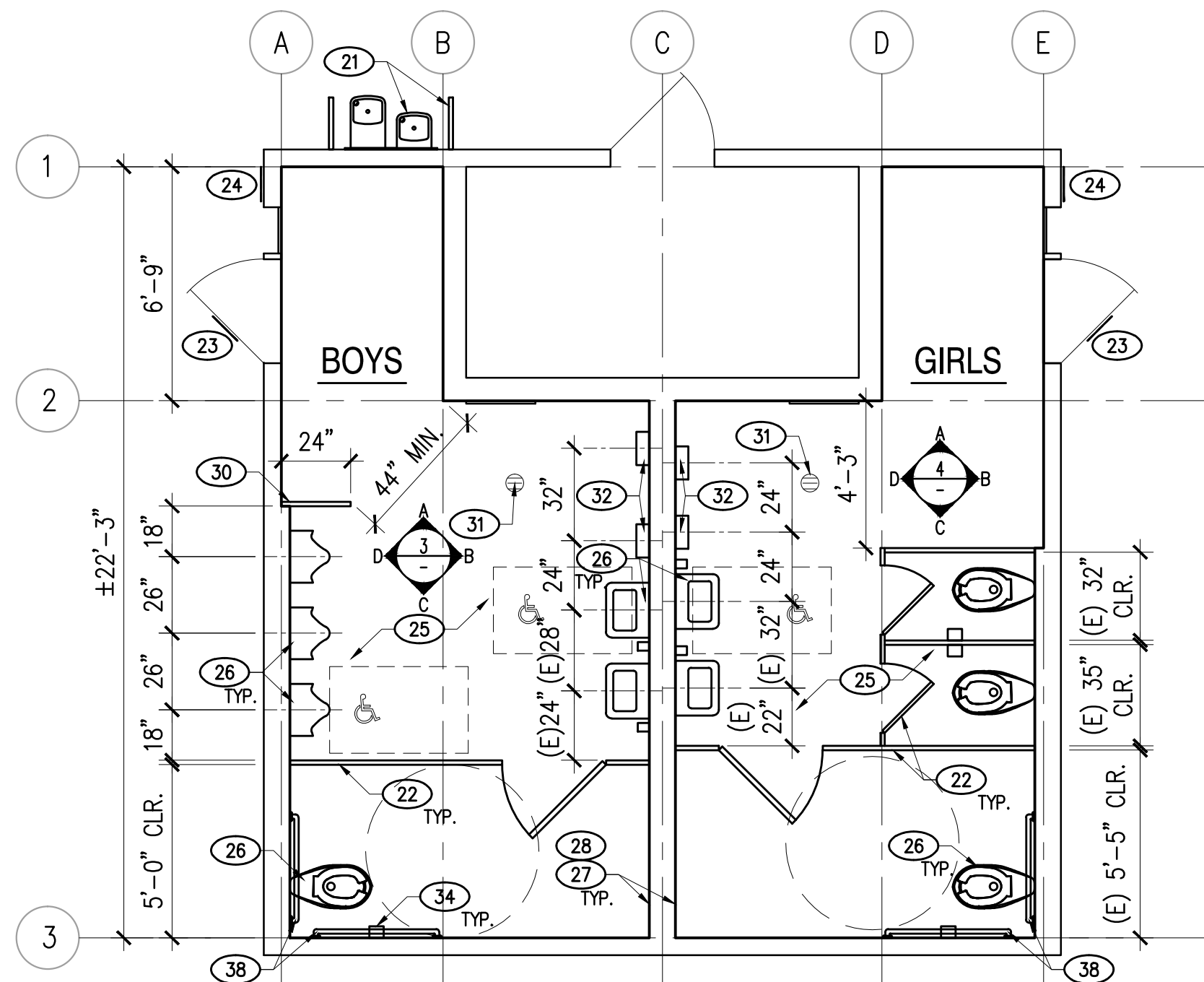
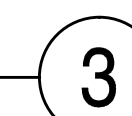
C



D

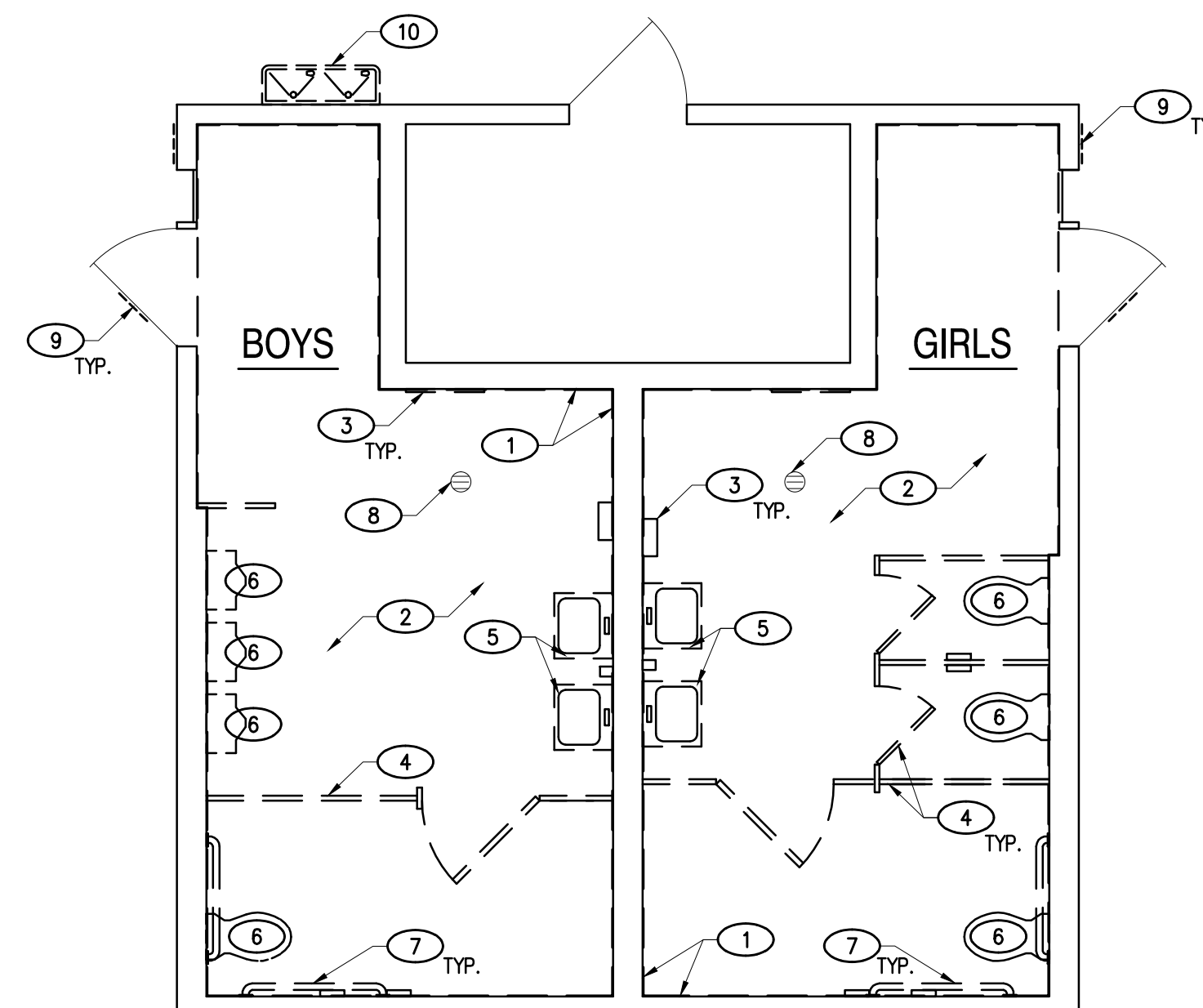
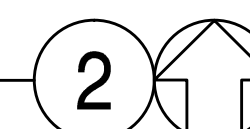
BOYS' TOILET ROOM INTERIOR ELEVATIONS

SCALE: 1/4"=1'-0"



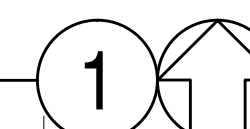
BOYS' AND GIRLS' TOILET ROOM PROPOSED FLOOR PLAN

SCALE: 1/4"=1'-0"



BOYS' AND GIRLS' TOILET ROOM DEMOLITION PLAN

SCALE: 1/4"=1'-0"



LEGEND

- $\frac{\#}{\#}$  SEE SHT A-300 FOR PLUMBING SCHEDULE
- $\frac{\#}{\#}$  SEE SHT A-300 FOR DOOR SCHEDULE
- $\frac{\#}{\#}$  SEE SHT A-300 FOR TOILET ACCESSORIES SCHEDULE
- W/M WALL MOUNTED
- F/M FLOOR MOUNTED

1936 Carlotta Dr.,  
Concord, CA 94519

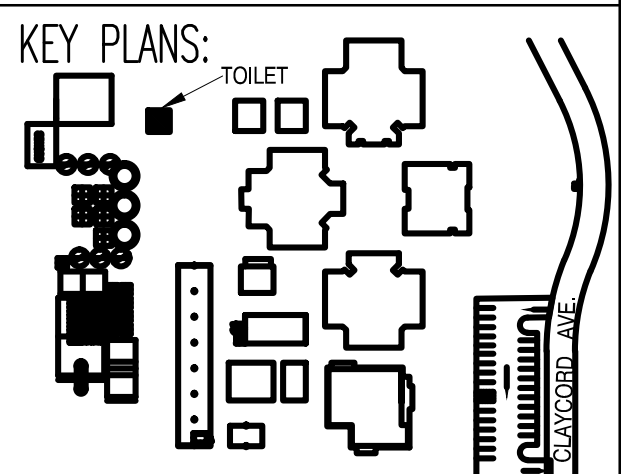


3211 Ronino Way  
Lafayette, California 94549  
925.949.8333 tel.

STRUCTURAL ENGINEER  
TSA STRUCTURAL ENGINEERS

433 AIRPORT BLVD., #106E  
BURLINGAME, CA 94010  
TEL. (650) 620-9555

PROJECT TITLE:  
MAINTENANCE WORK  
PLUMBING AND FINISHES  
AT STUDENTS'  
RESTROOMS  
SILVERWOOD  
ELEMENTARY SCHOOL



REVISIONS:

date	description	symbol
	DISTRICT REVIEW	
12/20/2017	DSA PROJECT SUBMITTAL	

PHD ARCHITECTS JOB #  
17-215

SCALE:  
AS NOTED

DATE:  
12/20/17

SHEET NAME & NUMBER:  
DEMOLITION, FLOOR AND  
RCP PLANS

A-200





1936 Carlotta Dr.,  
Concord, CA 94519



Architecture • Planning • Interiors  
3211 Ronino Way  
Lafayette, California 94549  
925.949.8333 tel.

STRUCTURAL ENGINEER  
TSA STRUCTURAL ENGINEERS  
433 AIRPORT BLVD., #106E  
BURLINGAME, CA 94010  
TEL. (650) 620-9555

PROJECT TITLE:  
MAINTENANCE WORK  
PLUMBING AND FINISHES  
AT STUDENTS'  
RESTROOMS

KEY PLANS:

REVISIONS:		
date	description	symbol
1/30/2018	BID SUBMITTAL	

PHD ARCHITECTS JOB #  
17-215

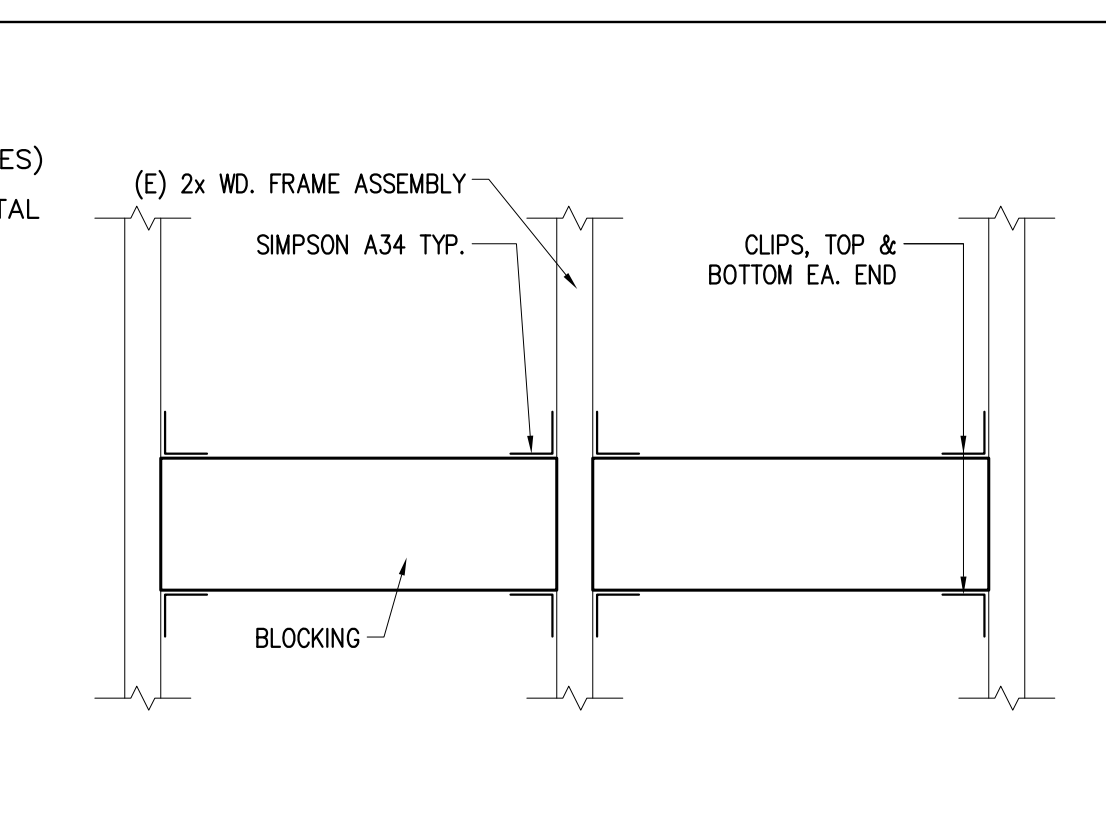
SCALE:  
AS NOTED

DATE:  
1/30/18

SHEET NAME & NUMBER:

DETAILS

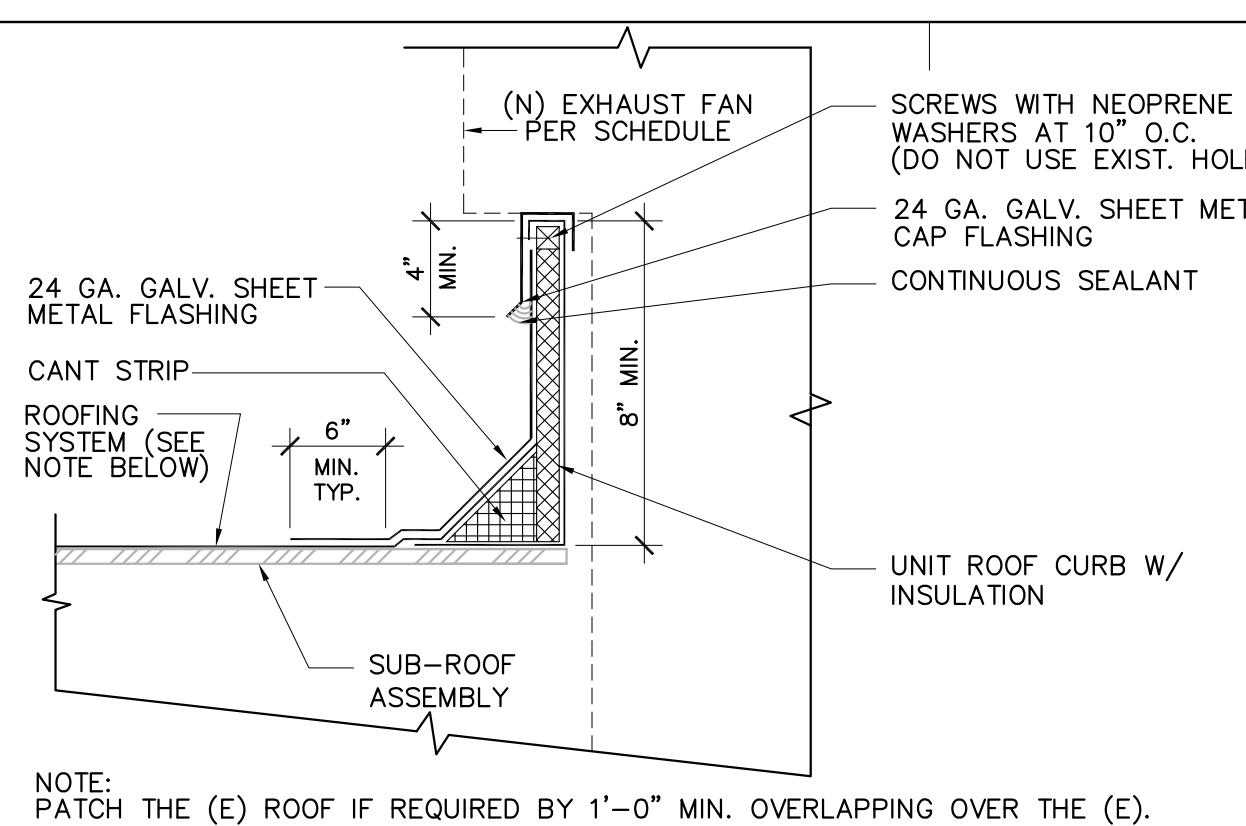
A-500



BLOCKING

SCALE: 1-1/2"=1'-0"

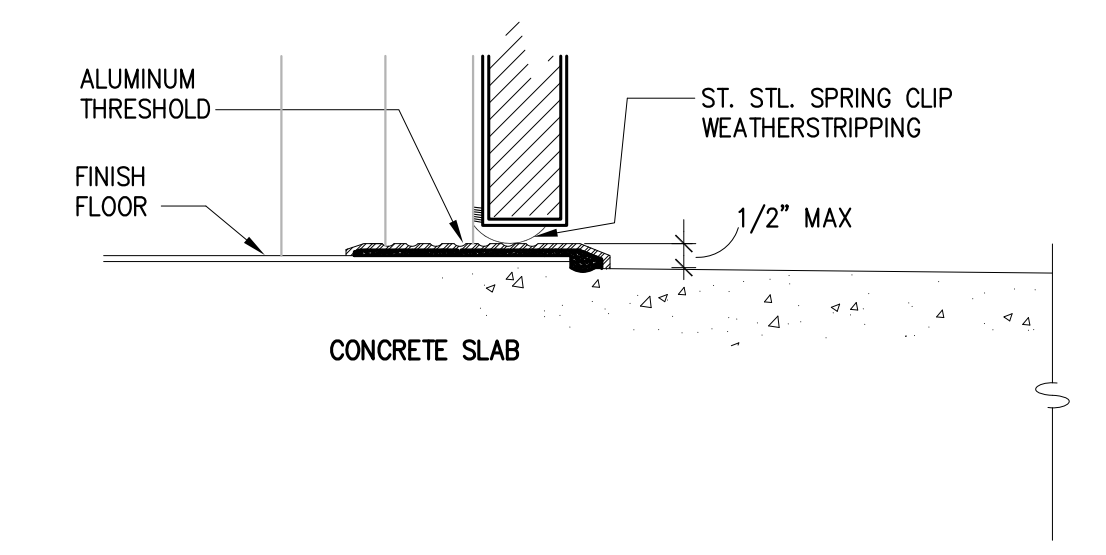
4



TYP. ROOF FLASHING @ EXHAUST FAN

SCALE: 1-1/2"=1'-0"

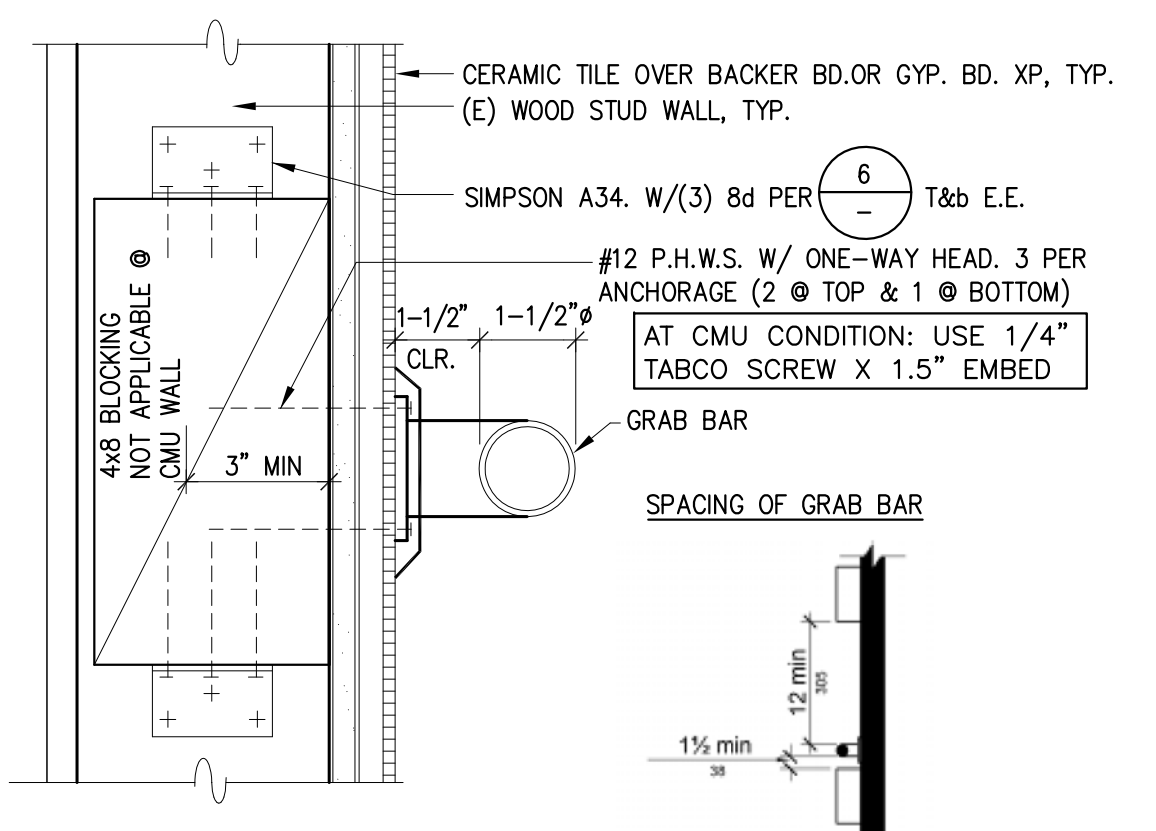
8



DOOR THRESHOLD

SCALE: 3"=1'-0"

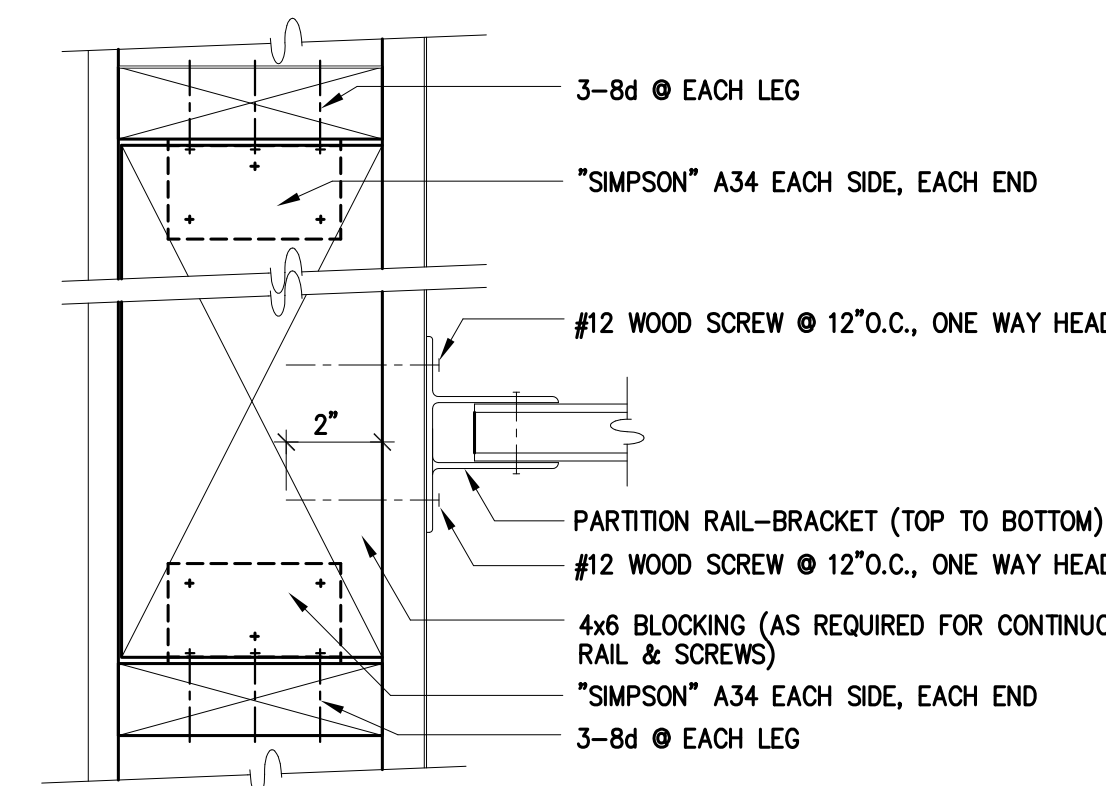
3



GRAB BAR ANCHORAGE

SCALE: 3"=1'-0"

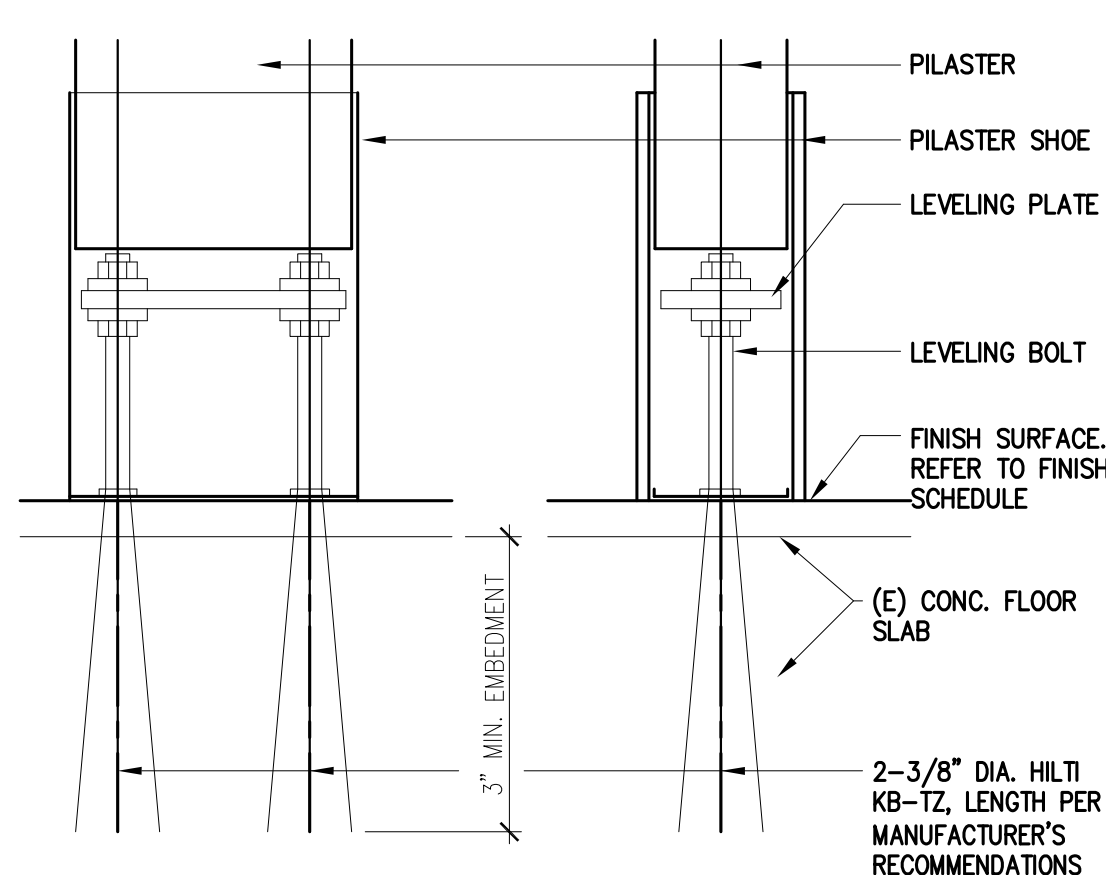
7



TOILET PTN ANCHORAGE - @ WALL

SCALE 3"=1'-0" IF REQUIRED

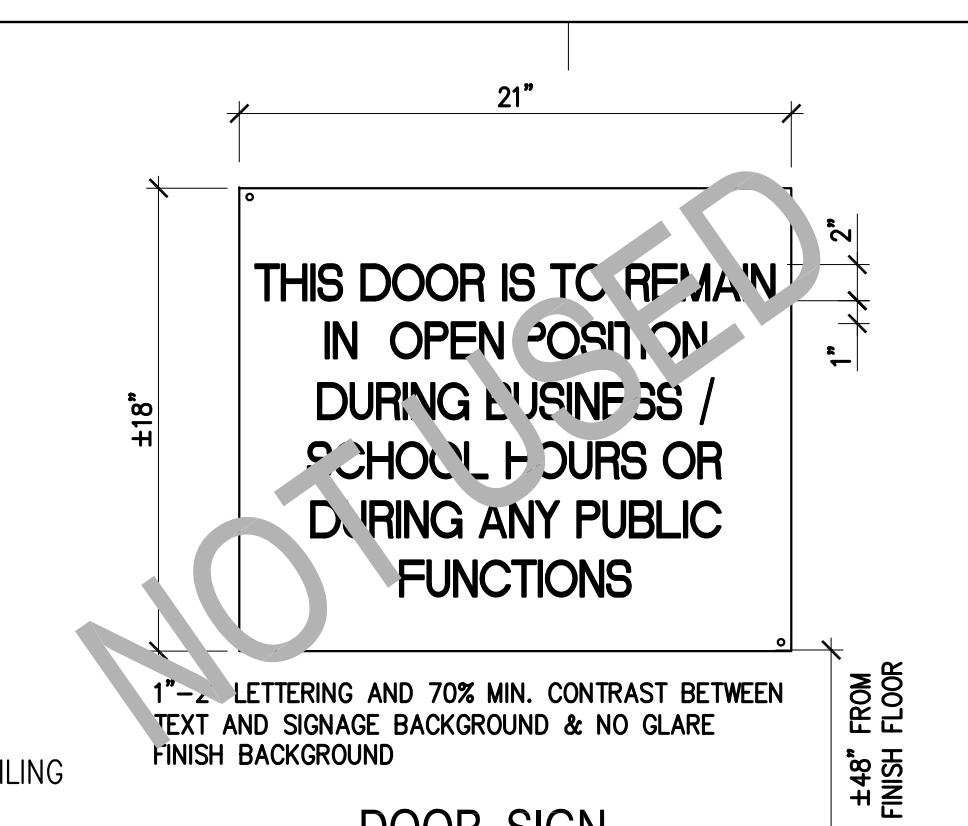
2



TOILET PARTITION MOUNTING @ BASE

SCALE: 1-1/2"=1'-0" IF REQUIRED

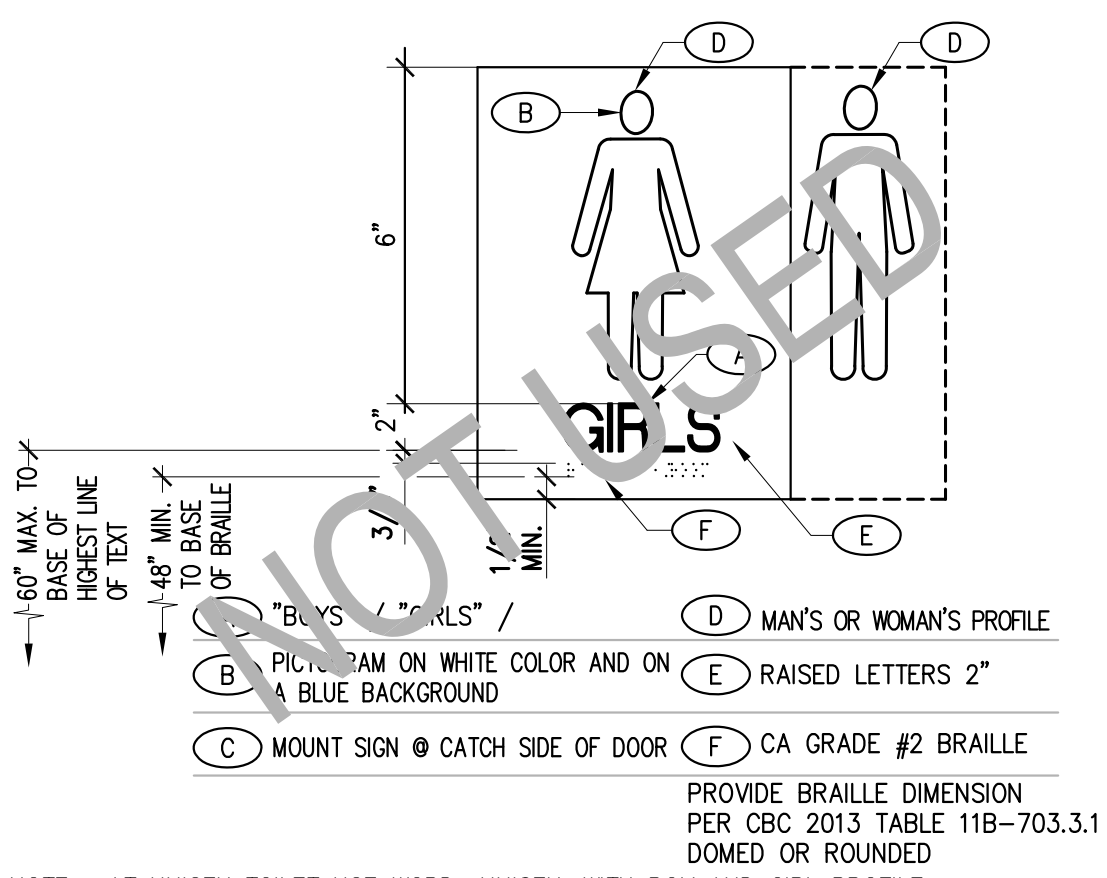
1



OPEN POSITION DOOR SIGN

SCALE: 1/4"=1'-0"

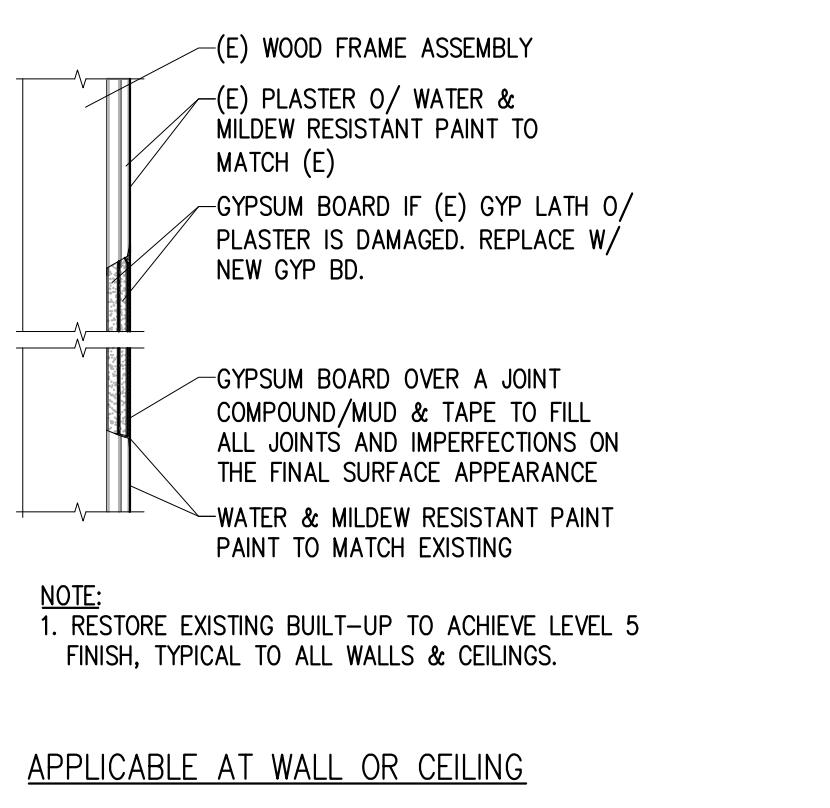
12



WALL ID SIGN @ TOILET

SCALE: 3"=1'-0"

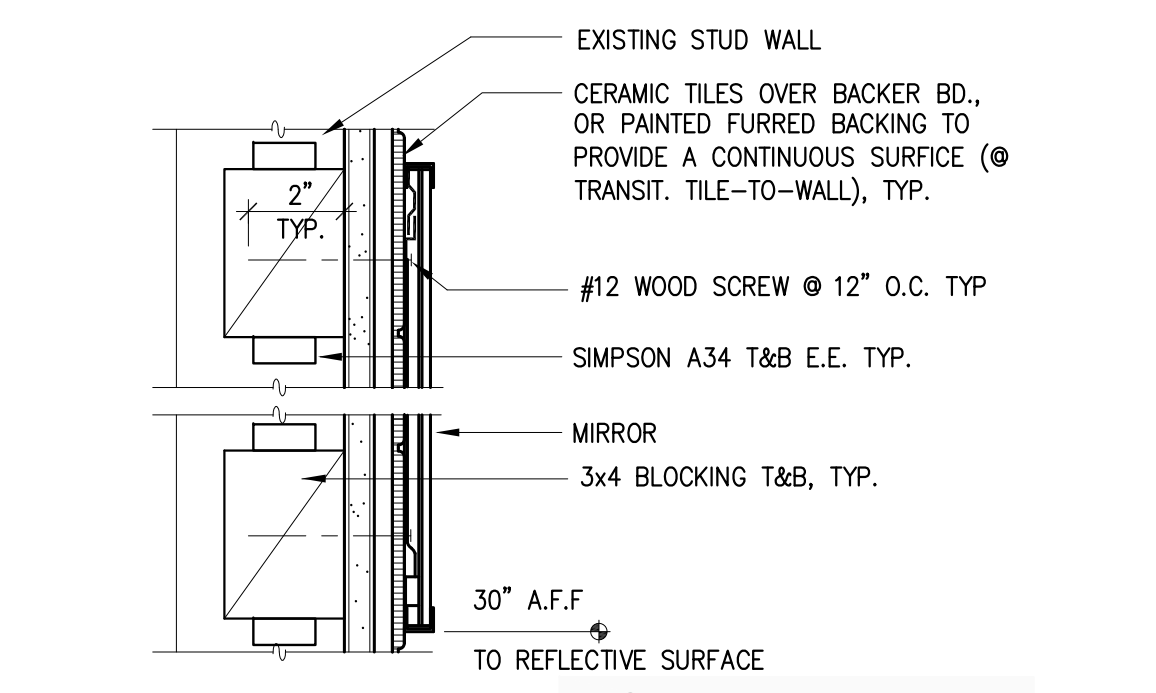
11



GYP. BOARD PATCH / FINISH WHERE REQUIRED

SCALE: 1-1/2"=1'-0"

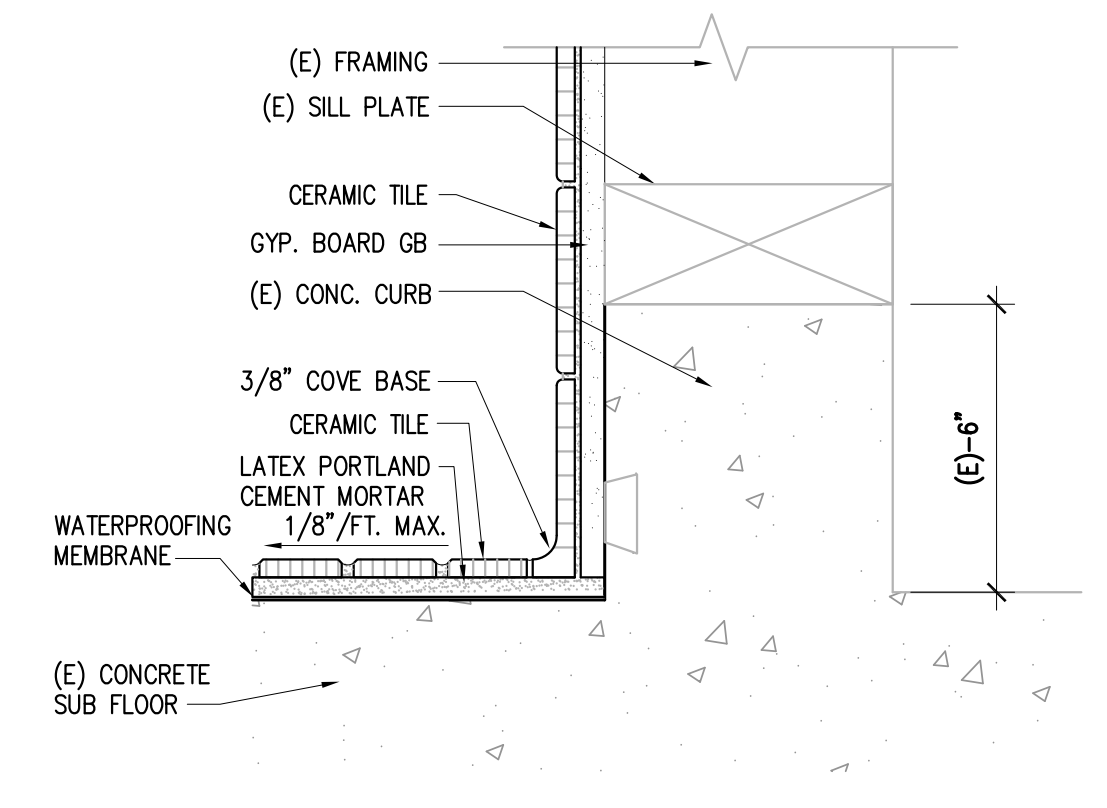
10



MIRROR MOUNTING

SCALE 3"=1'-0"

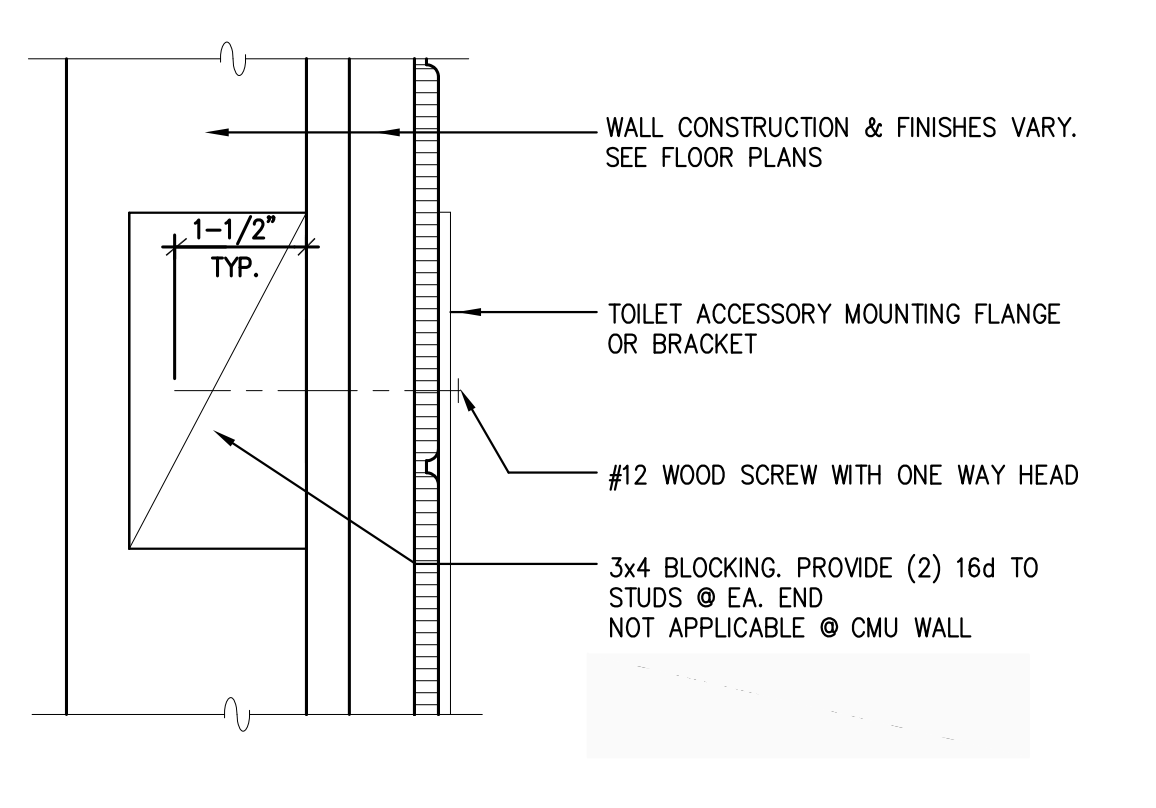
6



CERAMIC TILE COVE BASE @ TOILET ROOM

SCALE 3"=1'-0"

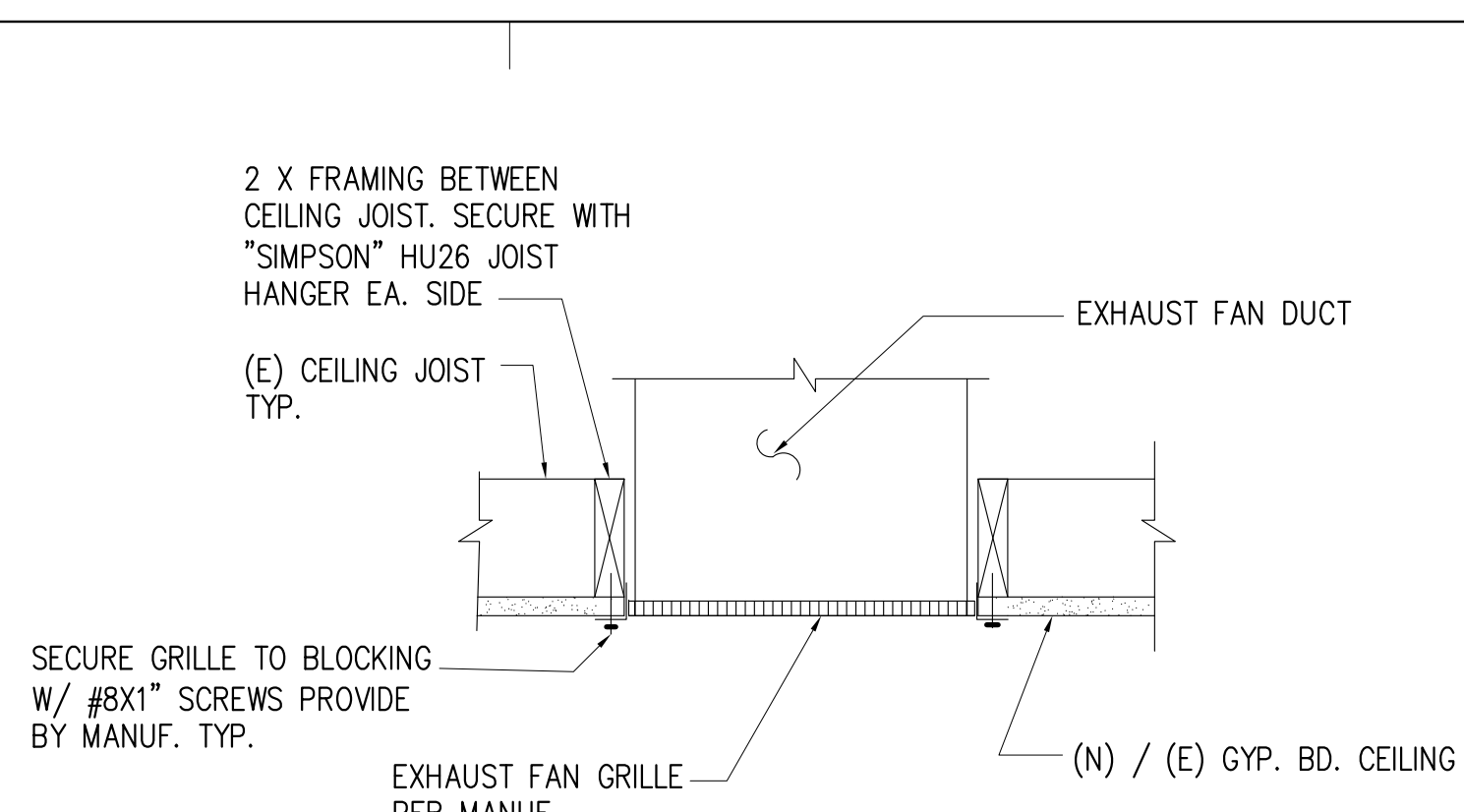
9



TYPICAL MOUNT FOR TOILET ACCESSORIES

SCALE 6"=1'-0"

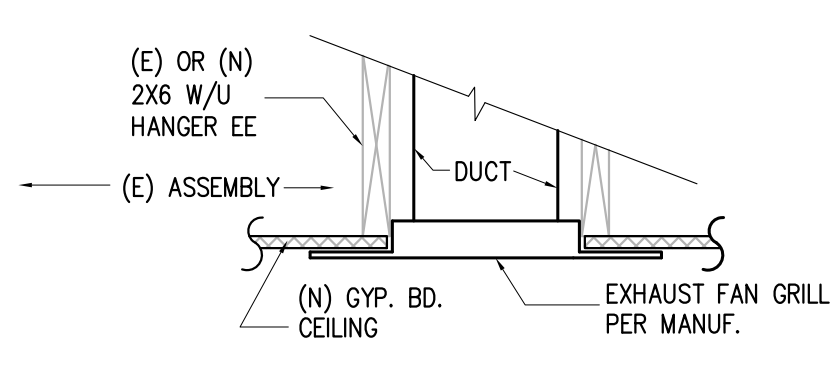
5



EXHAUST FAN MOUNTING GRILLE

SCALE NTS

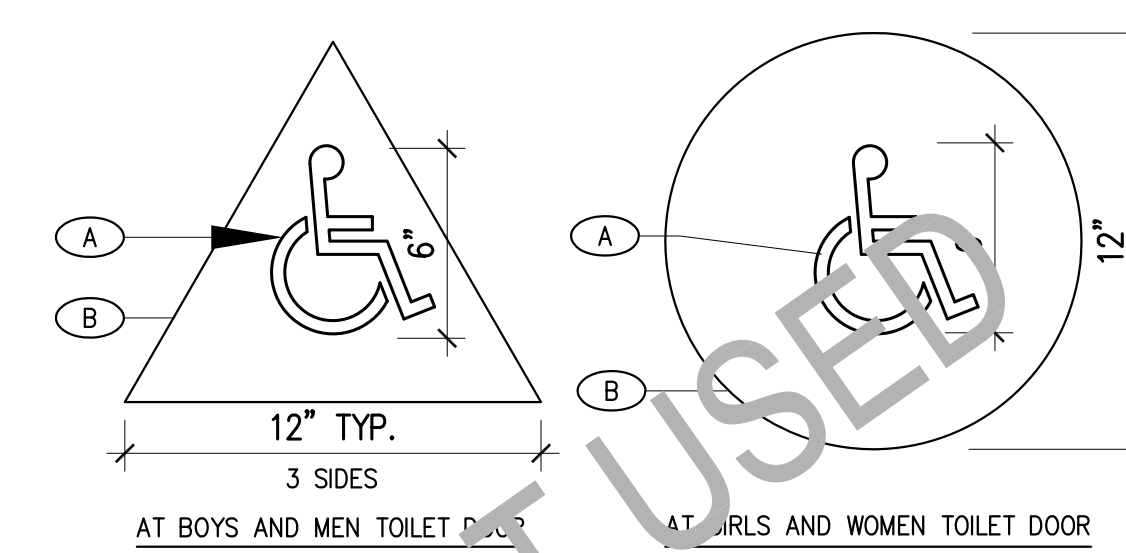
16



EXHAUST FAN GRILLE

SCALE 1-1/2"=1'-0"

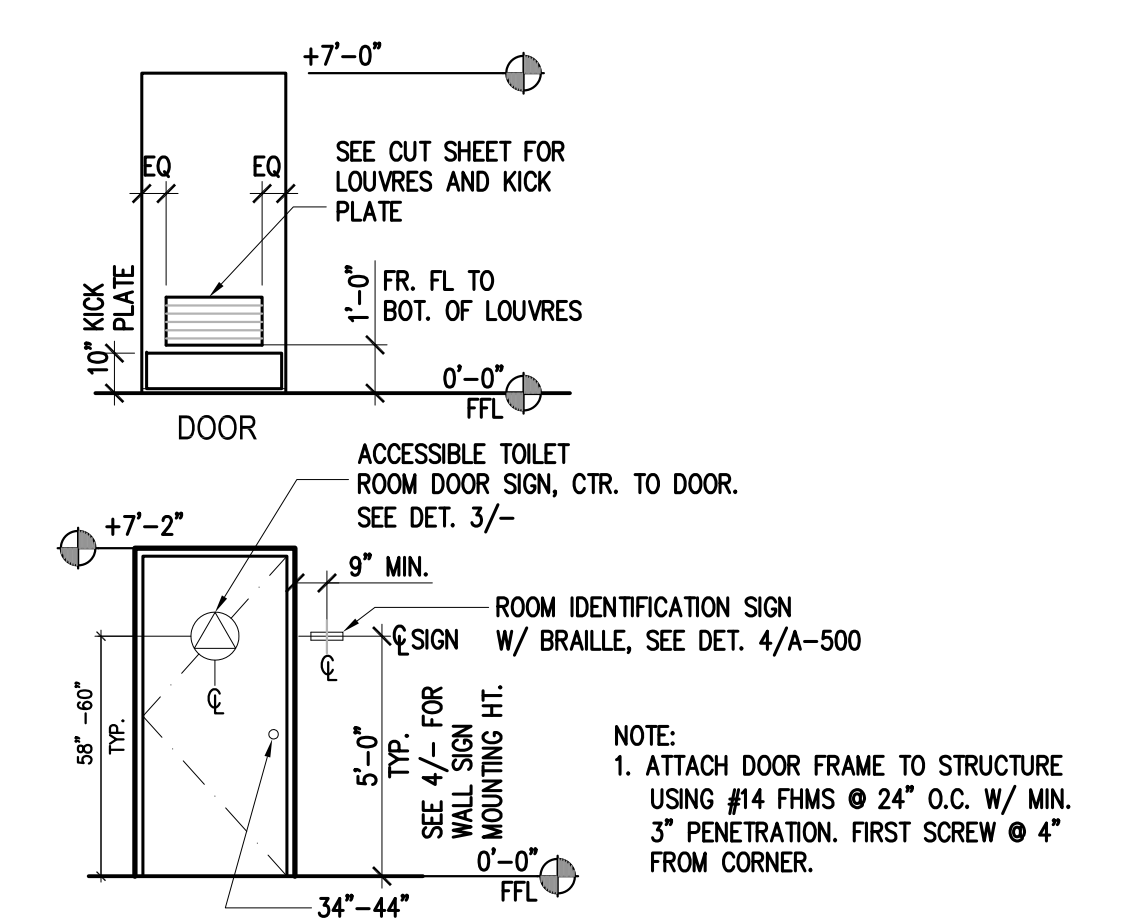
15



ACCESSIBLE TOILET ROOM DOOR SIGNAGE @ BOYS AND GIRLS

NOT TO SCALE

14



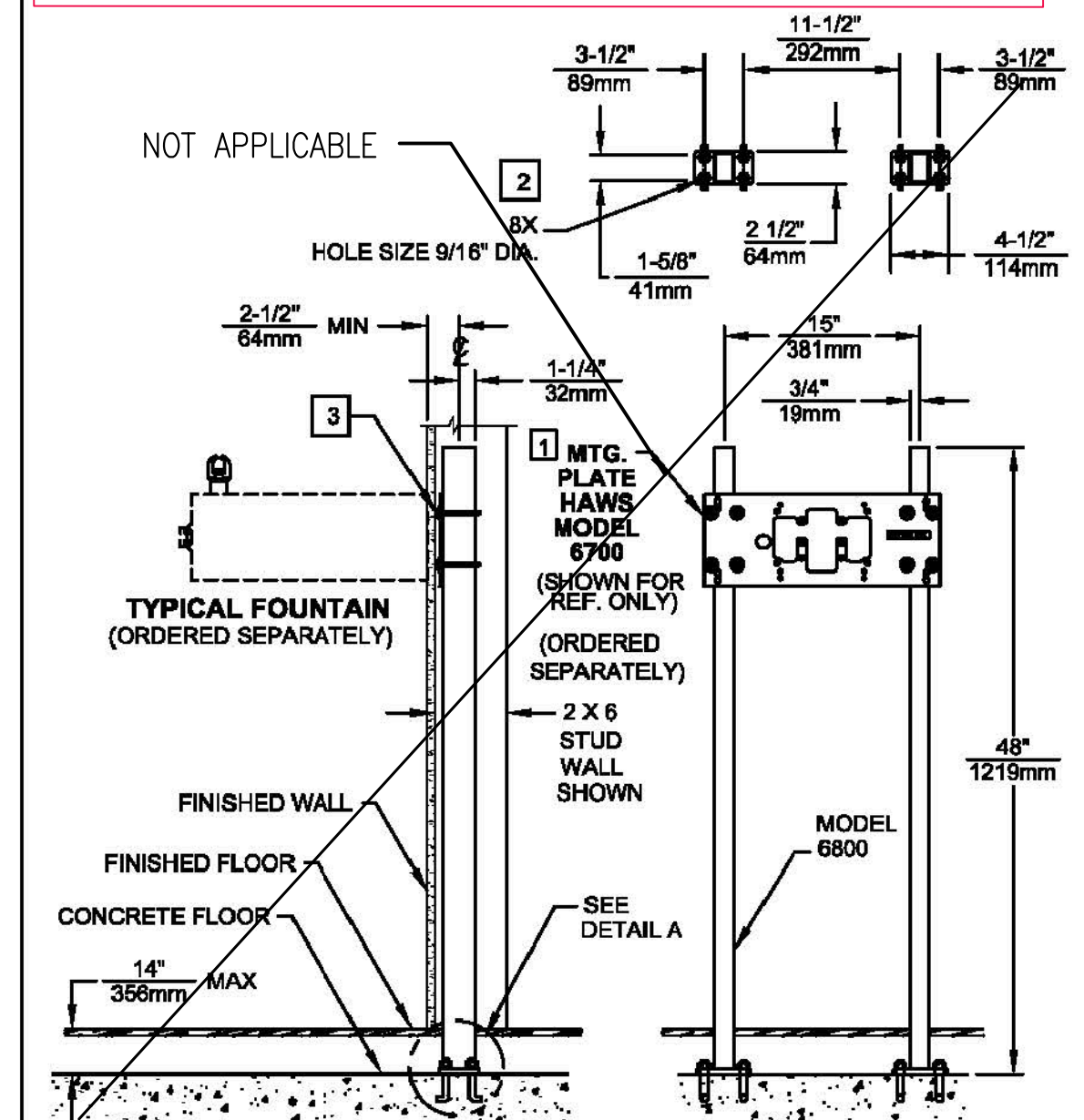
RESTROOM DOOR

SCALE: 1/4"=1'-0"

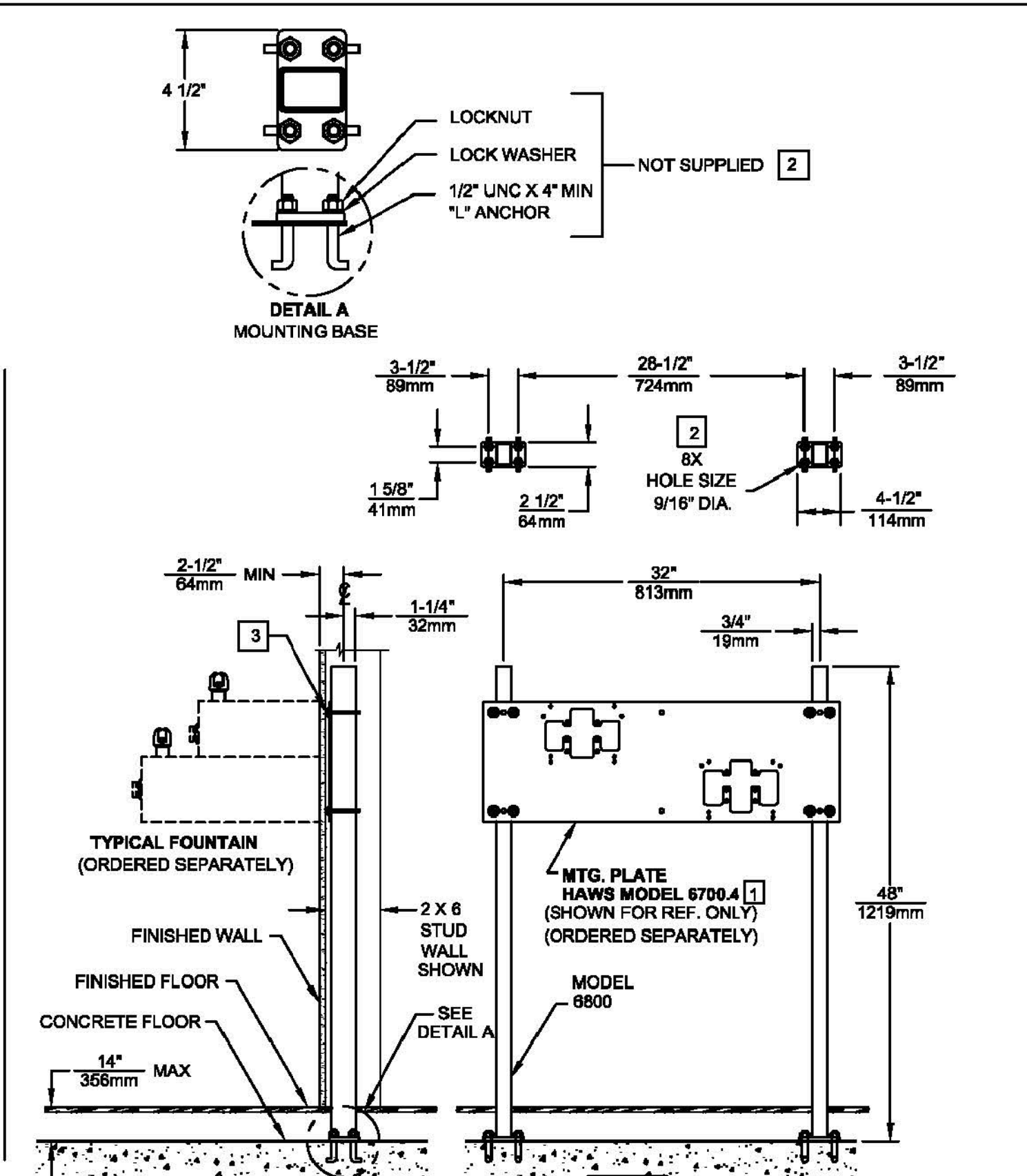
13

THIS DOCUMENT IS TRUE AND CORRECT AT TIME OF PUBLICATION. CONTINUED PRODUCT IMPROVEMENTS MAKE SPECIFICATIONS AND MEASUREMENTS SUBJECT TO CHANGE WITHOUT NOTICE.

- NOTE:**
- THE 6800 SUPPORT CARRIER CAN ALSO BE USED WITH MOUNTING PLATE MODELS 6705, 6710, 6715 AND 6717.
  - ANCHORING SYSTEM - MINIMUM REQUIREMENTS: 1/2" UNC X 4" MIN. "L" ANCHORS (QTY 8) AND ASSOCIATED HARDWARE (NOT SUPPLIED). SEE MOUNTING BASE DETAIL A.
  - WHEN PLACED IN A 2 X 4 STUD WALL, U-BOLTS (SUPPLIED WITH ASSOCIATED HARDWARE) MUST BE TRIMMED AFTER BACK PANEL HEIGHT IS ADJUSTED.



FOR MODELS: 1001, 1025 1047, 1075, 1105, 1107L, AND 1109



FOR MODELS: 1011, 1117L, 1119 AND 1119.14

**Haws**

MANUFACTURED BY: HAWSCO CORPORATION, SPARKS, NEVADA 89431  
 (775) 359-4712 FAX (775) 358-7424  
 E-MAIL: HAWSCO@HAWSCO.COM  
 WEBSITE: WWW.HAWSCO.COM

MODEL(S): 6800  
 PART NUMBER: 0002080019  
 DRAWING NO.: 10408C00  
 REV: 13

SCALE: 1:1 DRAWING TYPE: INSTALLATION SIZE: A1 SHEET 1 OF 1

**ATTENTION**  
 THIS CHAIR CARRIER IS USED WITH SEVERAL DIFFERENT MODELS. FOR FOUNTAIN ROUGH-IN HEIGHTS AND MOUNTING PLATE ORIENTATION SEE THE MOST CURRENT INSTALLATION INSTRUCTIONS SUPPLIED WITH THE FOUNTAIN AND MOUNTING PLATE BEING USED PRIOR TO INSTALLING THIS UNIT.

©2011 Haws Corporation - All Rights Reserved. HAWSCO® and other trademarks used in these materials are the exclusive property of Haws Corporation.

**Haws** model 6800 Support Frame

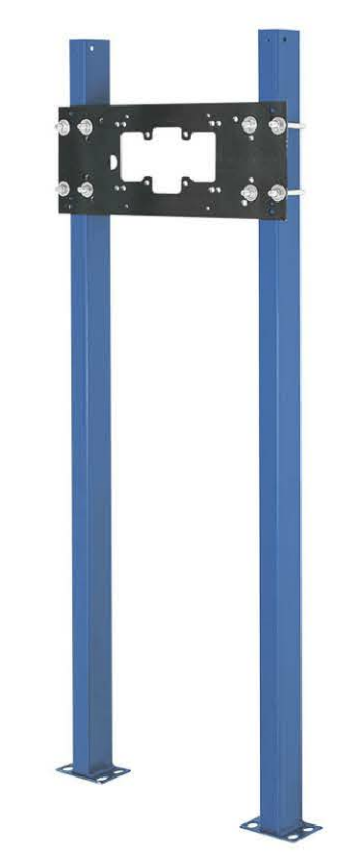
**FEATURES & BENEFITS**

**MOUNTING**  
 Painted steel support posts with mounting feet, and heavy duty cad plated U-bolts provide the maximum mounting strength for many Haws wall mounted drinking fountains.

**OPTIONS**

- Mounting Plate: Model 6715 "Hi-Lo" mounting plate for Haws fountain model 1501.
- Mounting Plate: Model 6700 universal mounting plate for most wall mounted fountains. Priced Separately
- Mounting Plate: Model 6700.4 "Hi-Lo" universal mounting plate for most dual bubbler fountains. Priced Separately
- Mounting Plate: Model 6710 mounting plate.

To see all options for this model, visit [www.hawSCO.com](http://www.hawSCO.com)



**SPECIFICATIONS**

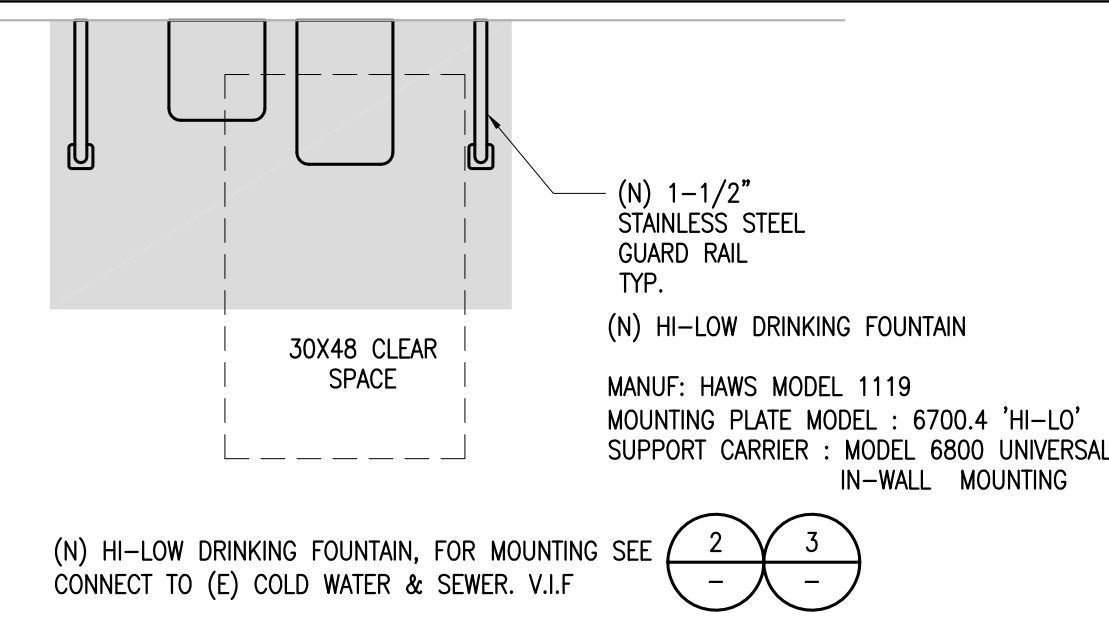
Model 6800 universal support shall include dual steel tube supports with integral 3/16" (.47 cm) steel mounting feet along with u-bolts and hardware.

**APPLICATIONS**

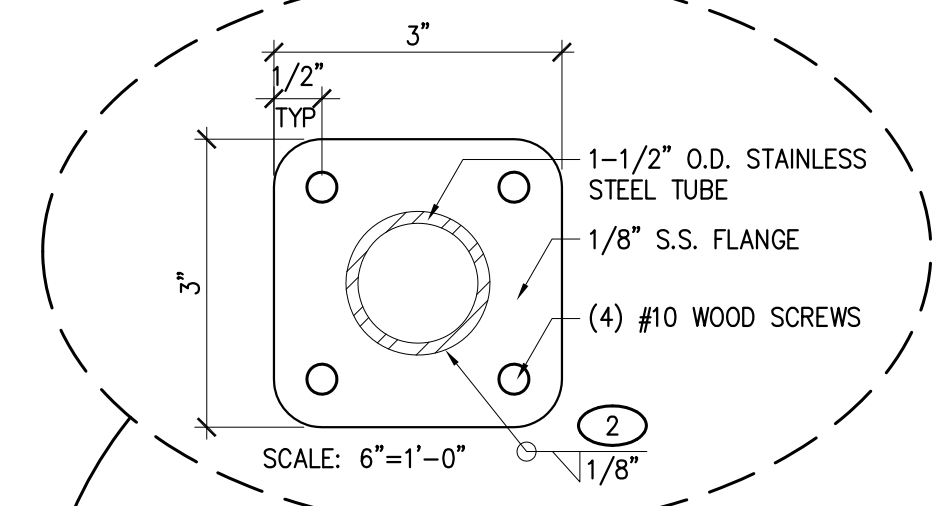
Haws produces this mounting frame to assist in the installation process as well as to provide a solid base for the wall mounted designed fountains. Mounting plates and frames meet the requirements solely for the specified applicable fountains and are not designed to be used in the installation of any unspecified fountain.

**3 DRINKING FOUNTAIN SUPPORT CARRIER AND MOUNTING PLATE – MANUF. INSTALLATION**  
 Scale: NONE

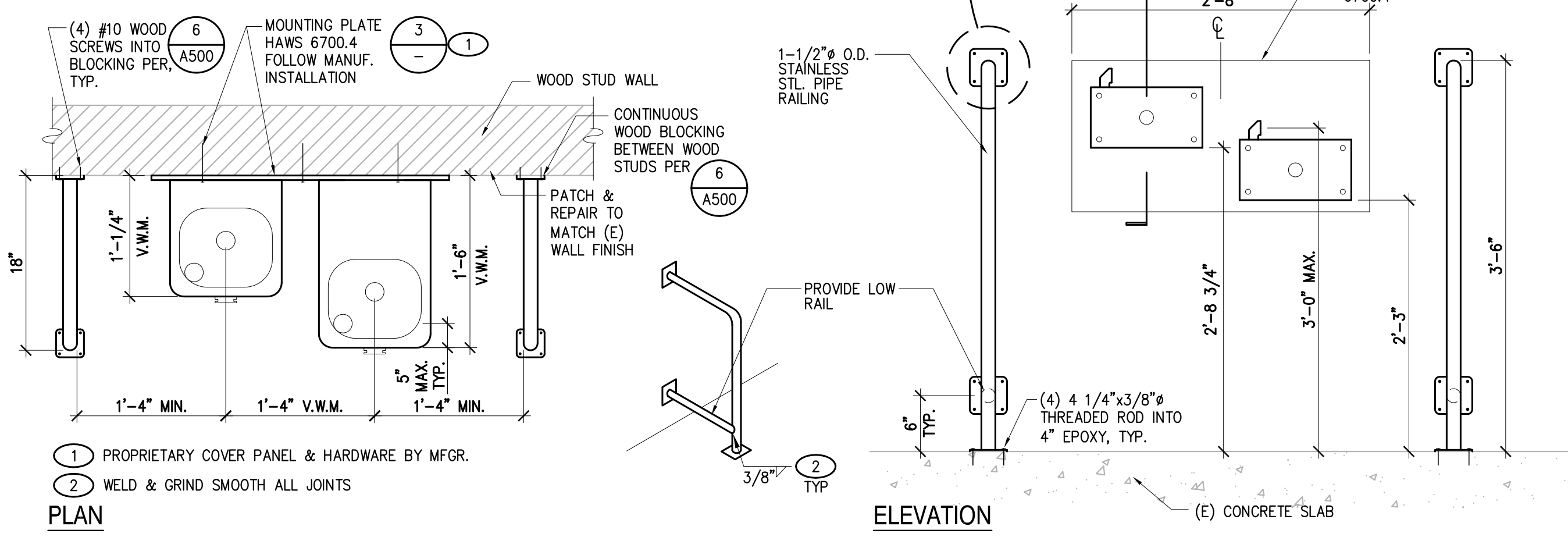
**CONTRACTOR INSTALL WATER FOUNTAIN  
 OWNER FINISH**



**1 PROPOSED DRINKING FOUNTAIN – TYP. PLAN**  
 Scale: 1/2"=1'-0"



- CONTRACTOR SHALL VISIT, EXAMINE & COORDINATE ALL REROUTING OF (E) PIPES, CONDUITS & DUCTS AS NEEDED IN FIELD.
- ALL PENETRATION AT WALLS TO BE FIRE SEALED & AIR TIGHT.
- PATCH & PAINT ALL DAMAGED AREAS WITHIN LIMIT OF WORK TO MATCH (E).



**2 DRINKING FOUNTAIN AND BARRIER MOUNTING – EXTERIOR**  
 Scale: 1"=1'-0"

**W.T. DIABLO UNIFIED SCHOOL DISTRICT**

1936 Carlotta Dr.,  
 Concord, CA 94519

**PHD ARCHITECTS, INC.**  
 Architecture • Planning • Interiors  
 3211 Ronimo Way  
 Lafayette, California 94549  
 925.949.8333 tel.

**STRUCTURAL ENGINEER**  
 TSA STRUCTURAL ENGINEERS  
 433 AIRPORT BLVD., #106E  
 BURLINGAME, CA 94010  
 TEL: (650) 620-9555

PROJECT TITLE:  
**MAINTENANCE WORK  
 PLUMBING AND FINISHES  
 AT STUDENTS'  
 RESTROOMS**

KEY PLANS:

**REVISIONS:**

date	description	symbol
1/30/2018	BID SUBMITTAL	

PHD ARCHITECTS JOB #  
 17-215

SCALE: AS NOTED DATE: 1/30/18

SHEET NAME & NUMBER:  
 DETAILS

**A-510**

