



# Attendance Boundary Articulation: Schools in the Clayton Area

Presented by Felicia Stuckey-Smith  
Director, Student Services  
April 25, 2016

# **Clayton Attendance Area**

Should the Board designate  
**A New Attendance Area?**

*OR*

Should the Board maintain the designated  
**School Choice Area?**

# *School Attendance Boundaries*

## *Board Policy 5116*

The Governing Board has responsibility for establishing attendance zones in way as to facilitate the educational program. The number and location of schools necessary to serve the student population will be guided by the following criteria in determining school attendance boundaries:

- 1. Educational needs of students
- 2. Proximity of students to school plants
- 3. Safety of students
- 4. Ages of students served
- 5. Nature of the educational program housed
- 6. Racial/ethnic balance
- 7. School capacity and enrollment data
- 8. Projections of future demographic changes indicating where the total school age population will be living.

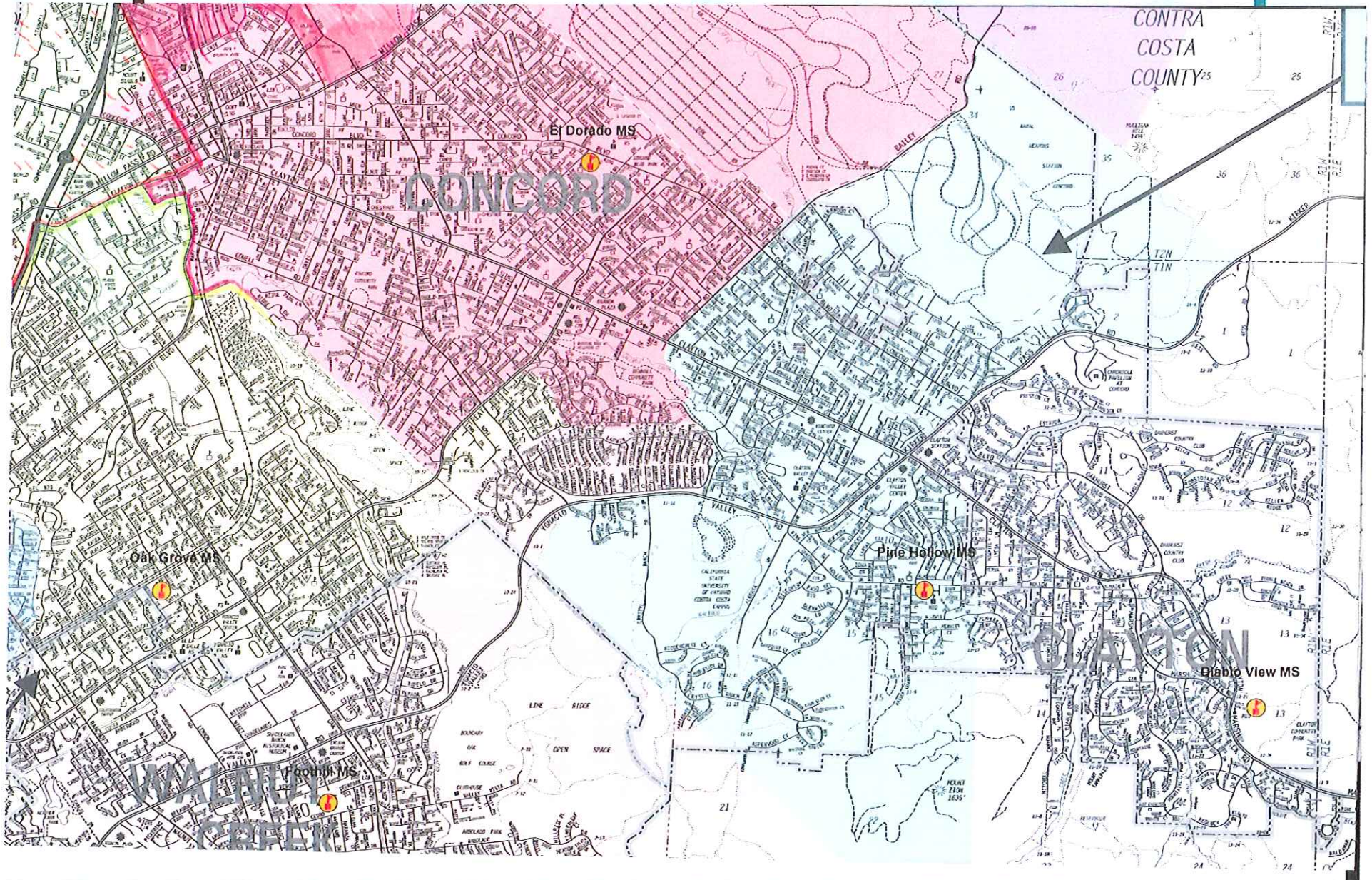
# Considerations

- Geography
- Space Available
- Impact

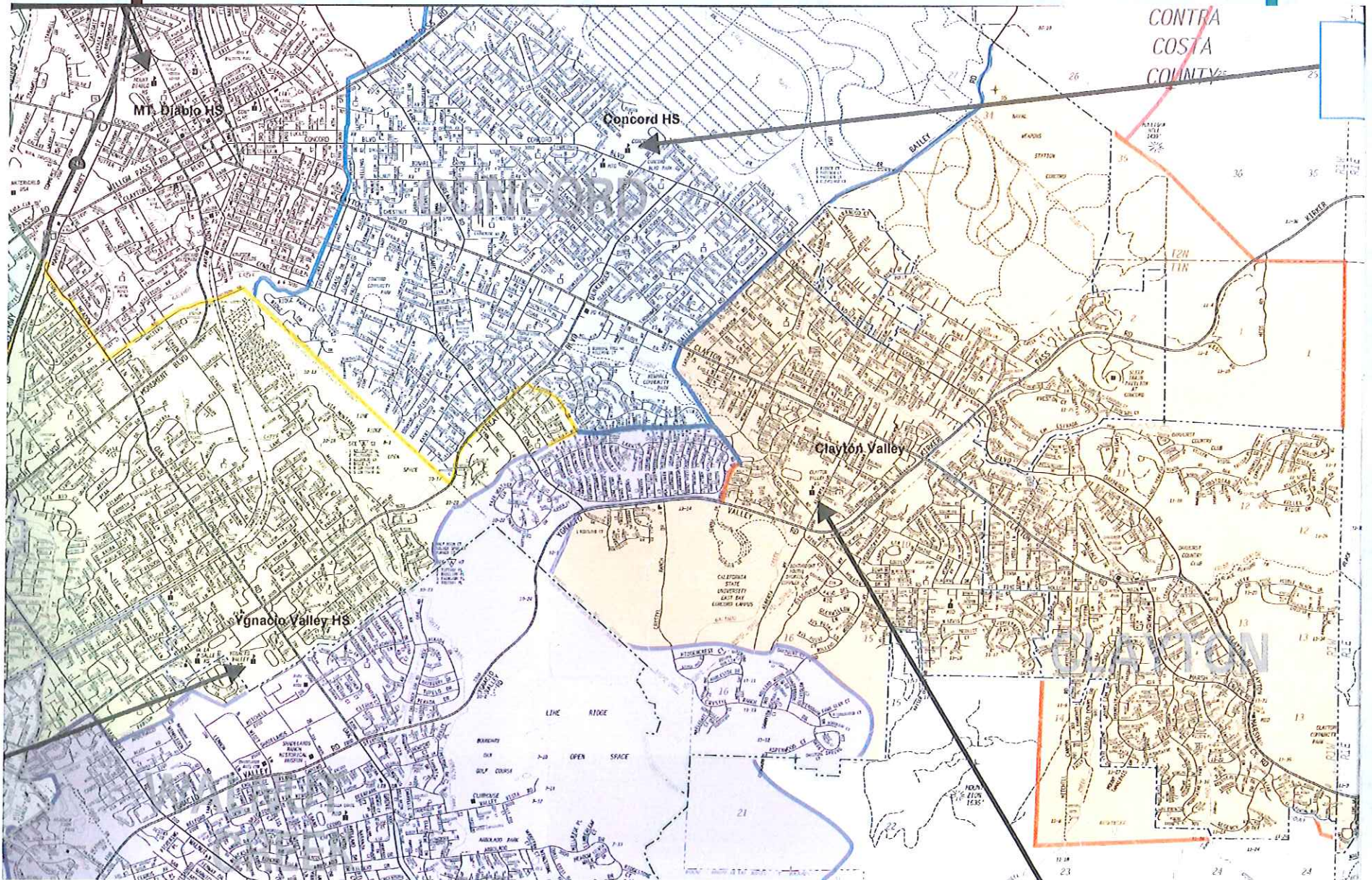
# What is the Student Attendance Area?

- TK-12<sup>th</sup> grade, students are assigned resident schools based upon address.
- The student attendance area (school boundary) is based upon the designated location of the resident schools.

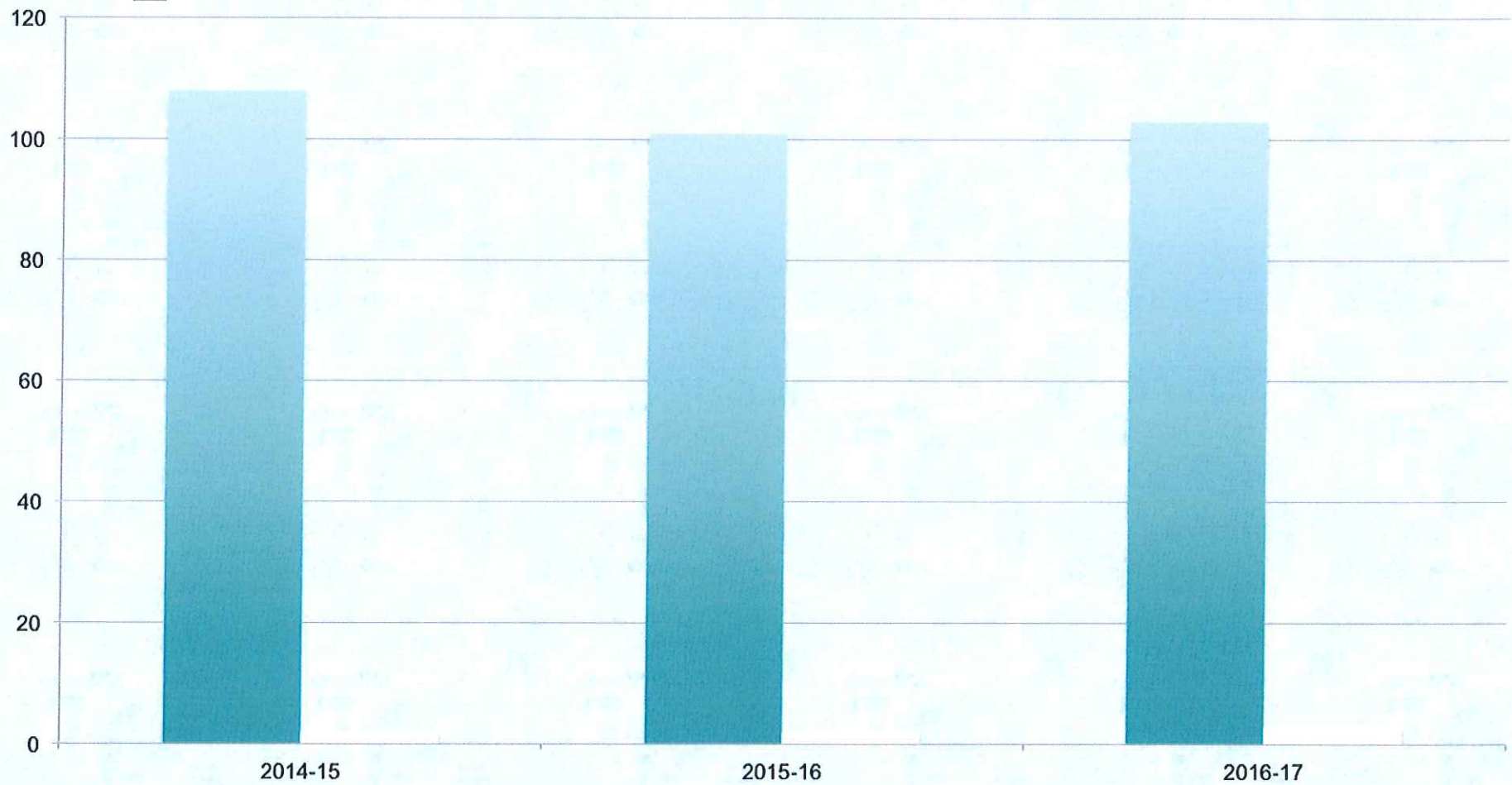
# MIDDLE SCHOOL ATTENDANCE AREAS – 2016



# HIGH SCHOOL ATTENDANCE AREAS – 2016

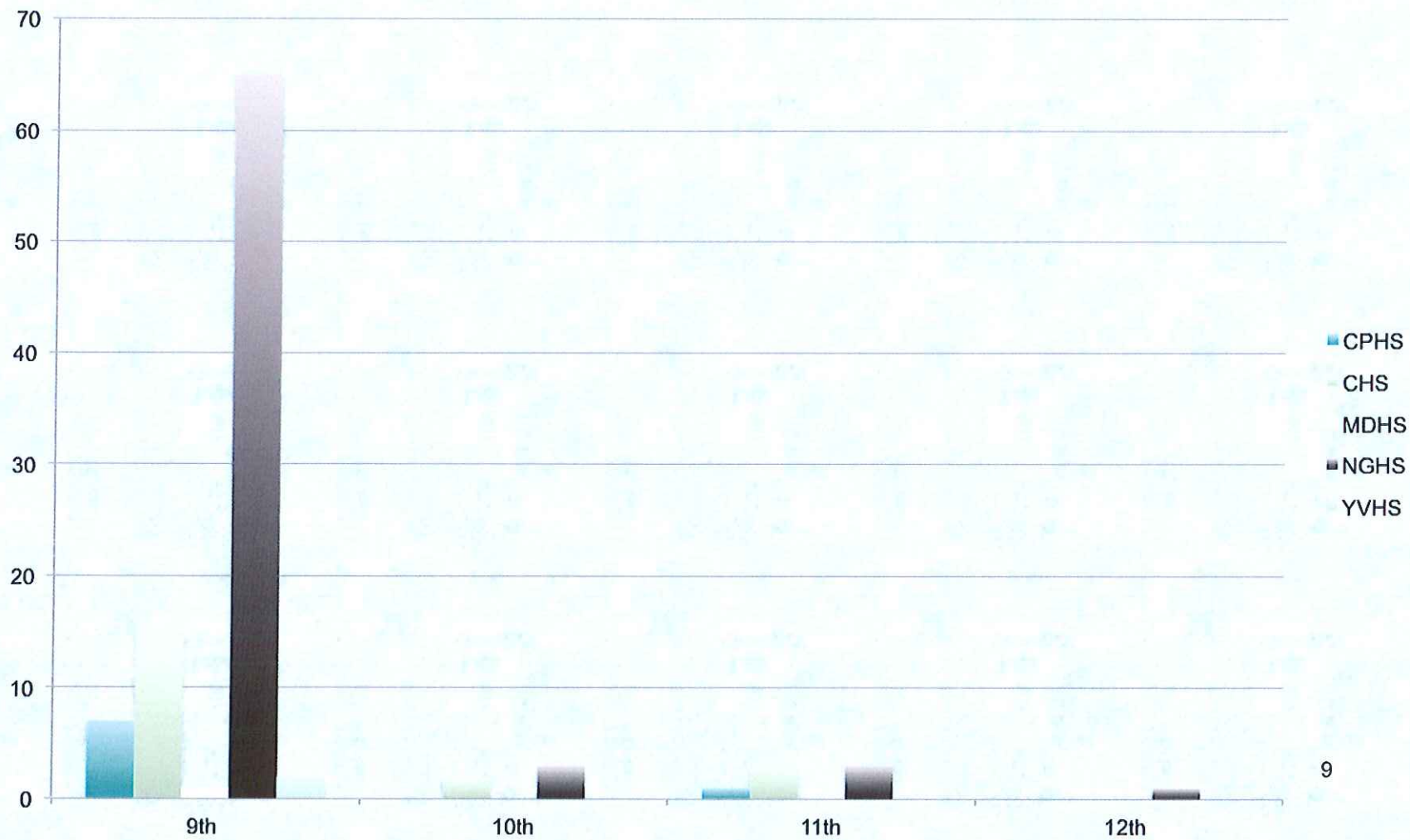


## Requests for enrollment in MDUSD High Schools, By Year





# 2016-2017 Requests by High School



# Current Enrollment by High School

High School School \ Grad	Total Enrollment				Grand Total
	9	10	11	12	
College Park High School	525	536	519	429	2009
Concord High School	430	439	329	308	1506
Mt Diablo High School	351	362	305	269	1287
Northgate High School	383	436	390	388	1597
Ygnacio Valley High School	354	308	244	203	1109
<b>Total</b>	<b>2043</b>	<b>2081</b>	<b>1787</b>	<b>1597</b>	<b>7508</b>

## *Current Student Enrollment: by Zip Code*

- 6<sup>th</sup>-8<sup>th</sup> grade students by zip code

○ 94517 Clayton	436
○ 94519 Concord	1
○ 94520 Concord	0
○ 94521 Concord	534
<b>Total</b>	<b>971 students</b>

- 8<sup>th</sup> Grade Students who live in the Option area: 369
- DVMS 8<sup>th</sup> graders: 158
- PHMS 8<sup>th</sup> graders: 151      DVMS + PHMS = 309

## *Current Student Enrollment: by Zip Code*

■ K-5 grade students	1,933
■ 6 <sup>th</sup> -8 grade students	971
<b>Total</b>	<b>2,904</b>

## Current School Process

What is the current enrollment process?

- **A-** In 2012 the Board designated a student's residence as a grey area (Option)
  - Parents are given a choice of high schools
  - Parents completes a Choice Transfer form by selecting specific high schools
  - Student Service administrator assigns a high school based on parent's preference and space availability
  - Once approved student enrolls at the assigned school. The school becomes the students' resident school

## New Attendance Area

*Where will students be assigned?*

- **A-**If the Board designates a new attendance area-
  - Students are assigned a resident high school
  - Students' cumulative records are automatically sent to the resident school
  - New students register at their resident school
  - Parents can opt to transfer to another school

# Board Considerations

- Staff requests input from the Board on the high school attendance boundaries in the Clayton area.
- Geography
- Space Available
- Impact

# Staff Recommendation for a high school attendance area

- Staff recommends the Board of Education designate the following feeder patterns:

Elementary School- Middle School- High School

- Ayers-Pine Hollow Middle-Concord High
- Silverwood -Pine Hollow Middle- Northgate High
- Highlands-Pine Hollow Middle-Northgate High
- Mt. Diablo-Diablo View Middle- Northgate High



# [ Mt. Diablo Unified School ]

We remain committed  
to providing  
**our students**  
a high quality education  
at all high schools in our district.