



MT. DIABLO UNIFIED SCHOOL DISTRICT

Expanded Learning Opportunities Grant (ELO)

May 26 2021, Board Meeting

Dr. Lisa Gonzales, Chief Business Officer

Stephanie Roberts, Director of Partnerships & MTSS

Jennifer Sachs, Chief - Educational Services

Through Line

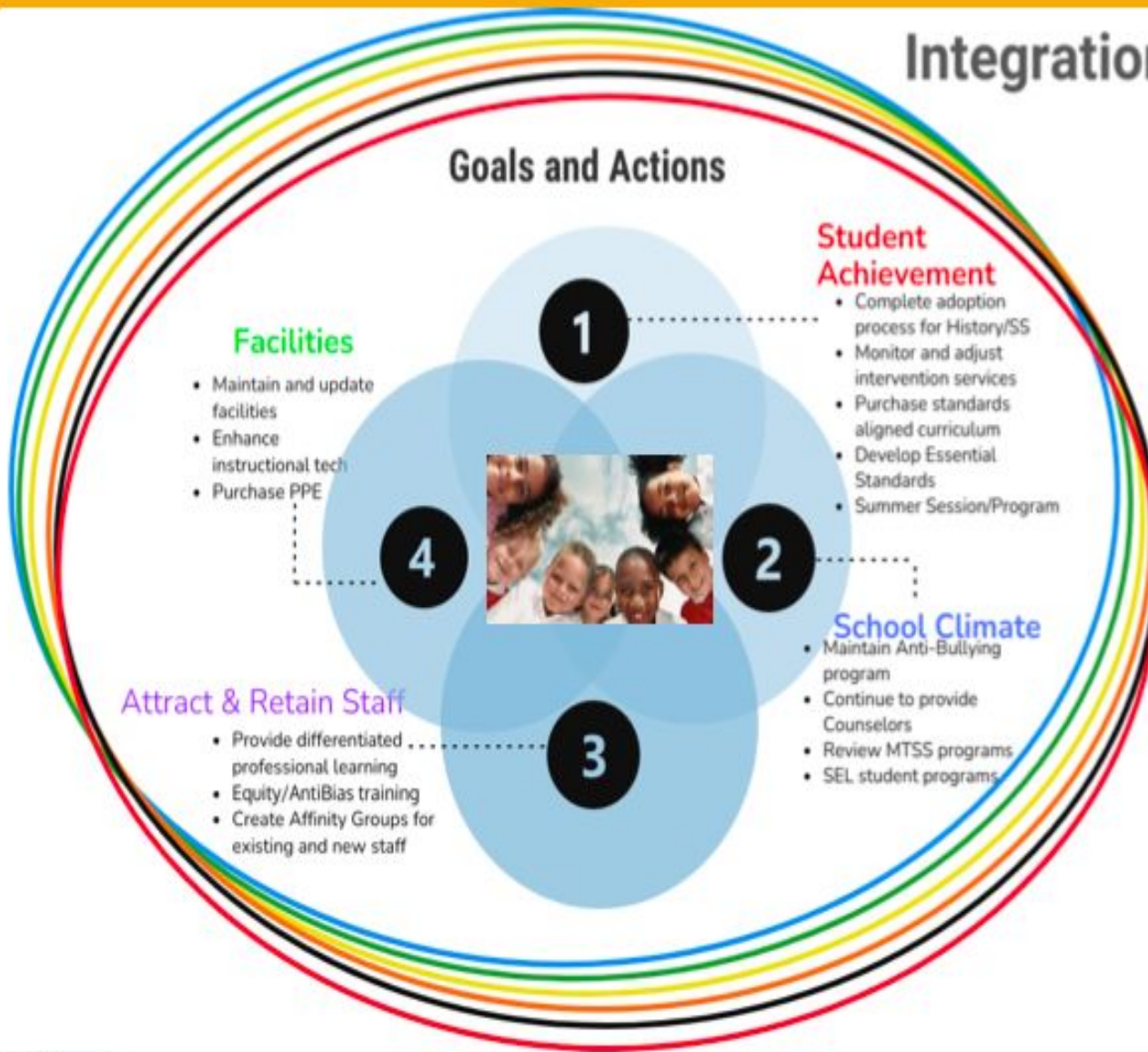


Students Programs Funding Metrics

Measurement



Integration of Funding



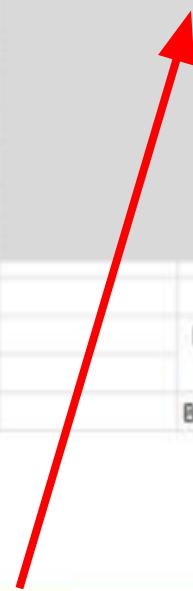
- Learning Loss Mitigation
- ESSER-F
- SB117
- AB 86 COVID Relief
- LCFF
- Categoricals

Source Determination:

- **Prioritization of need**
 - Immediate
 - Other
- **Timing of Goal/Action**
 - Immediate
 - Time bound
 - Long range
- **Type of program/service**
 - Distance learning
 - Specific to COVID safe environment
 - Enhanced learning
 - Intervention
 - Technology

Accounting & Compliance Schedule

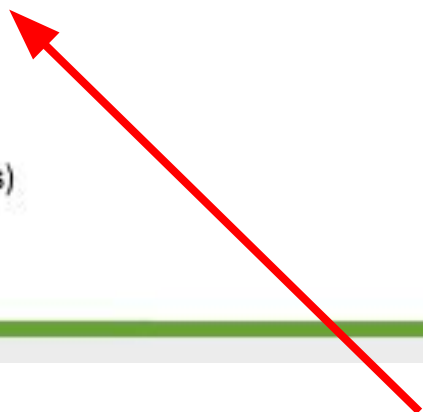
Program	SB98 Learning Loss Mitigation (LLM)			SB117 COVID-19 relief	Elementary & Secondary School Emergency Relief (ESSER)			AB86- In Person Instruction (IPI) and Expanded Learning Opportunities (ELO)		
	LLM	LLM	LLM		ESSER I	ESSER II	ESSER III	IPI	ELO	ELO paras
Program Acronym	Federal	Federal	State	State	Federal	Federal	Federal	State	State	State
Source	GEER	CRF	Prop 98	Prop 98	CARES	CRSAA	ARP	Prop 98	Prop 98	Prop 98
Funding	Sep-22	May-21	Jun-21	n/a	Sep-22	Sep-23	Sep-24	Aug-22	Aug-22	Aug-22
Spending deadline	3215	3220	7420	7388	3210	3212	32137	7422	7425	7426
Resource	U	U	F	F	U	U	U	F	F	F
Unearned Revenue/Fund Bal	8290	8290	8590	8590	8290	8290	8290	8590	8590	8590
SACS Revenue Code	Federal requirements:									
Excess interest earned	YES	NO			YES	YES	YES			
Private School Equitable Services	YES	NO			YES	NO	NO			
Supplement not supplant	NO	NO			NO	NO	NO			
Maintenance of Effort	YES	NO			YES	YES	YES			
NEW Maintenance of Equity	n/a	n/a			NO	NO	YES			
Indirect Costs	YES	NO			YES	YES	YES			
Cash dependent on reporting	YES	NO			YES	YES	YES			
State requirements:										
Plan required	Learning Continuity & Attendance Plan (in place of 2020-21 LCAP)							Expanded Learning Opportunity Grant Plan Board Adoption by June 1, 2021		



Time Restrictions

Resource	Program Name	Fiscal Yr Funding	FROM		SPENDING PERIOD THROUGH					
			2019-20	2020-21	2020-21	2020-21	2022-23	2022-23	2023-24	2024-25
			13-Mar-20		31-May-21	30-Jun-21	31-Aug-22	30-Sep-22	9/30/2023	9/30/2024
7388	COVID-19	Prop 98								
3215	LLM	GEER								
3220	LLM	CRF								
7420	LLM	Prop 98								
3210	ESSER I	CARES								
3212	ESSER II	CRSAA								
3213?	ESSER III	ARP								
7422	IPI	Prop 98								
7425	ELO	Prop 98								
7426	ELO paras	Prop 98								

- Learning Loss Mitigation (LLM)
- Elementary & Secondary School Emergency Relief Funds (ESSER)
- In Person Instruction (IPI)
- Expanded Learning Opportunities (ELO)
- Expanded Learning Opportunities 10% reserve for paraprofessionals (ELO paras)



Guiding Questions - Considerations

6

Stakeholder feedback

- What have we learned?
- What services do students need?

Timing (immediate vs. long term)

- Funding - time bound?
- One-time? temporary? ongoing?

Analysis

- What services are we already providing?
- How does it tie into the LCAP but not duplicate?
-



ELO Alignment to District Plans & Focus

MDUSD Expanded Learning Opportunities (ELO) Plan and Alignment

Item	Notes	ELO Grant component	other ELO #	LCAP connection	SRI Review	Themes	Large scale district initiatives
					<i>C-coherence, E-equity, A-accountability, and AU-autonomy</i>		
1. Extending instructional learning time							
Summer school	Supplemental instruction and supports targeting students experiencing learning loss and those that have been disproportionately impacted by pandemic	1	2,5,6	Action 1.05			Extended learning Academic/SEL support
Contract for online tutoring for students	Contract for online tutoring for additional support and assistance for students FEV Tutoring. Propose to serve an additional 2500 students	1	2, 6	Action 1.03	6C	E	Academic support
CARES Westwood Elementary School Expanded Learning Program	Run a school year after school program at Westwood to support underserved students and consistent support within the CHS feeder pattern. (50% unduplicated students)	1		Action 1.05	6B, 6C	E	Academic support SEL support Supplemental support
College and Career Field trips	Field trips for students to have access and learn about colleges, careers, and trades	1	2, 3, 6				Extended learning Supplemental support
2. Accelerating progress to close learning gaps through the implementation, expansion, or enhancement of learning supports (tutoring, 1-1, small group, learning recovery programs. training in accelerated learning, achievement gap, and engagement)							
Intervention Teachers	Math/Early Literacy/STEM intervention to target instruction and support to students (20 FTE)	2	6	Action 1.03	9B	A	Academic support
Paraprofessionals	Instructional assistants (IA) to assist teachers with academic and SEL interventions.	2		Action 1.04	10D	A	Academic support SEL support

Feedback Gathered (LCAP/ELO process)

8

Qualitative Feedback

- Advisory Groups (ARAB, BAC, CAC, DELAC, PAC, SAC)
- Focus Groups (advisory reps, labor reps, staff, admins, students, parents/ guardians)
- Community Input meetings
- Community surveys

Quantitative Feedback

- California Accountability Dashboard data
- Attendance data
- Climate & engagement data
- Graduation data
- Local indicators
- Reclassification rates
- Suspension data
-

Expanded Learning Opportunities ⁹

Grant (AB86 - ELO) - \$19,493,127

- Shall use at least 85% of the ELO Grant for expenditures related to providing in-person services pursuant to the list of allowable costs
- Shall use at least 10% of the grant to hire paraprofessionals to provide supplemental instruction and support through duration of program
- May expend up to 15% of the grant to increase or improve services for students participating in distance learning



7 Supplemental Instruction & Support Strategies

10

1. Expanded Learning Time

- \$4,200,000
- Summer school teachers, office support, administrators, bus driver; CARES expansion, online tutoring, college & career field trips

2. Accelerating Progress to Close Learning Gaps

- \$6,370,000
- Paraprofessionals, LindaMood Bell teachers, AVID coordinator sections, induction teachers, substitutes, TIL stipends, NGSS garden project, tech support, educational technology programs

3. Integrated Student Supports to Address Barriers to Learning

- \$1,920,000
- Counselors, lead counselor hours, MTSS model and professional development, MTSS lead teachers, Foster/HOPE teacher and assistant director, SEL program and professional development, parent/community support, teletherapy health, social work specialist, community liaison, Google classroom, telehealth, Kinolved Attendance Program

7 Supplemental Instruction & Support Strategies

11

4. Community Learning Hubs/ Technology Access

- \$4,734,000
- Chromebook one-to-one and teacher refresh program, hotspots
- Router, firewall

5. Supports for Credit Deficiency, Increase/Improve College Eligibility

- \$900,000
- Secondary teachers for credit recovery, credit deficiency program, Naviance, APEX

6. Additional Academic Services for Students (diagnostics, benchmarks, assessments)

- \$996,000
- Aeries, ParentSquare, Illuminate, iReady, ESGI, Unique licenses

7. Staff Training (trauma informed practices, social emotional, academic, equity)

- \$375,000
- Crisis prevention institute, professional development, student leadership & voice, Mindful Life contract