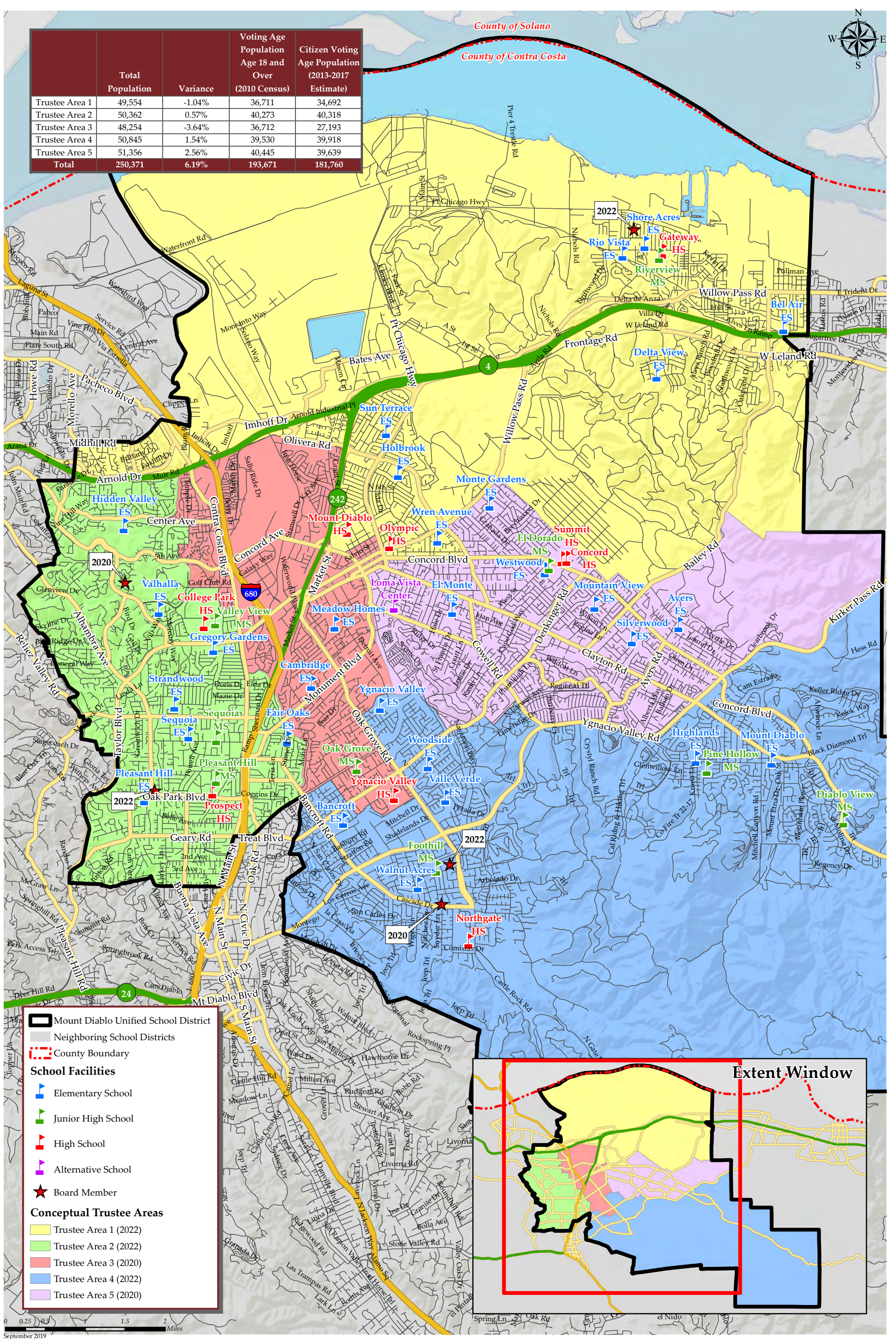


MT DIABLO UNIFIED SCHOOL DISTRICT CONCEPTUAL TRUSTEE AREAS - SCENARIO PURPLE A

	Total Population	Variance	Voting Age Population Age 18 and Over (2010 Census)	Citizen Voting Age Population (2013-2017 Estimate)
Trustee Area 1	49,554	-1.04%	36,711	34,692
Trustee Area 2	50,362	0.57%	40,273	40,318
Trustee Area 3	48,254	-3.64%	36,712	27,193
Trustee Area 4	50,845	1.54%	39,530	39,918
Trustee Area 5	51,356	2.56%	40,445	39,639
Total	250,371	6.19%	193,671	181,760



September 2019

MT DIABLO UNIFIED SCHOOL DISTRICT
CONCEPTUAL TRUSTEE AREAS - SCENARIO PURPLE A

Total Population (2010 Census)						
	Trustee Area 1	Trustee Area 2	Trustee Area 3	Trustee Area 4	Trustee Area 5	Variance
Population	49,554	50,362	48,254	50,845	51,356	
Population Variance	-520	288	-1,820	771	1,282	6.19%
Hispanic/Latino	18,739	6,053	21,562	4,779	10,157	
	37.82%	12.02%	44.68%	9.40%	19.78%	
White	17,367	35,529	16,939	36,539	31,086	
	35.05%	70.55%	35.10%	71.86%	60.53%	
Black/	3,901	997	2,048	739	1,332	
African American	7.87%	1.98%	4.24%	1.45%	2.59%	
American Indian/ Alaska Native	178	118	138	116	159	
	0.36%	0.23%	0.29%	0.23%	0.31%	
Asian	7,078	5,452	5,589	6,501	6,092	
	14.28%	10.83%	11.58%	12.79%	11.86%	
Native Hawaiian/ Other Pacific Islander	365	80	353	101	215	
	0.74%	0.16%	0.73%	0.20%	0.42%	
Other	133	91	108	136	137	
	0.27%	0.18%	0.22%	0.27%	0.27%	
Two or More Races	1,793	2,042	1,517	1,934	2,178	
	3.62%	4.05%	3.14%	3.80%	4.24%	

Population 18 and Over (2010 Census)						
	Trustee Area 1	Trustee Area 2	Trustee Area 3	Trustee Area 4	Trustee Area 5	
Population	36,711	40,273	36,712	39,530	40,445	
Population Variance	-2,023	1,539	-2,022	796	1,711	
	-5.22%	3.97%	-5.22%	2.05%	4.42%	
Hispanic/Latino	12,082	4,211	14,297	3,244	6,886	
	32.91%	10.46%	38.94%	8.21%	17.03%	
White	14,656	29,395	14,691	29,354	25,908	
	39.92%	72.99%	40.02%	74.26%	64.06%	
Black/	2,794	741	1,565	596	1,026	
African American	7.61%	1.84%	4.26%	1.51%	2.54%	
American Indian/ Alaska Native	153	105	113	83	130	
	0.42%	0.26%	0.31%	0.21%	0.32%	
Asian	5,636	4,604	4,771	5,161	4,997	
	15.35%	11.43%	13.00%	13.06%	12.36%	
Native Hawaiian/ Other Pacific Islander	256	64	245	83	162	
	0.70%	0.16%	0.67%	0.21%	0.40%	
Other	94	64	73	81	93	
	0.26%	0.16%	0.20%	0.20%	0.23%	
Two or More Races	1,040	1,089	957	928	1,243	
	2.83%	2.70%	2.61%	2.35%	3.07%	

Citizens by Voting Age Population Estimate (2013-2017)						
	Trustee Area 1	Trustee Area 2	Trustee Area 3	Trustee Area 4	Trustee Area 5	
Population	34,692	40,318	27,193	39,918	39,639	
Population Variance	-1,660	3,966	-9,159	3,566	3,287	
	-4.57%	10.91%	-25.20%	9.81%	9.04%	
Hispanic/Latino	9,039	3,994	6,777	3,716	6,243	
	26.05%	9.91%	24.92%	9.31%	15.75%	
White	14,960	29,608	13,569	29,618	25,951	
	43.12%	73.44%	49.90%	74.20%	65.47%	
Black/	3,214	1,076	1,797	531	1,642	
African American	9.26%	2.67%	6.61%	1.33%	4.14%	
American Indian/ Alaska Native	153	70	58	95	88	
	0.44%	0.17%	0.21%	0.24%	0.22%	
Asian	5,815	3,770	3,695	4,717	4,242	
	16.76%	9.35%	13.59%	11.82%	10.70%	
Native Hawaiian/ Other Pacific Islander	255	194	87	70	120	
	0.74%	0.48%	0.32%	0.18%	0.30%	
Other	0	0	0	0	0	
	0.00%	0.00%	0.00%	0.00%	0.00%	
Two or More Races	1,256	1,606	1,210	1,171	1,353	
	3.62%	3.98%	4.45%	2.93%	3.41%	

ACS Age Groups (2017 Estimates) ^[1]						
	Trustee Area 1	Trustee Area 2	Trustee Area 3	Trustee Area 4	Trustee Area 5	
Under 18 Years Old	24.53%	19.16%	22.88%	21.49%	19.90%	
18-24 Years Old	10.06%	6.58%	9.71%	6.13%	7.67%	
25-34 Years Old	14.82%	14.21%	19.97%	9.81%	14.66%	
35-54 Years Old	28.01%	28.09%	26.72%	27.31%	26.77%	
55-64 Years Old	12.60%	14.74%	10.96%	15.13%	14.32%	
Over 64 Years Old	9.98%	17.20%	9.76%	20.13%	16.68%	
Total	100.00%	100.00%	100.00%	100.00%	100.00%	

ACS Renters vs Owners (2017 Estimates) ^[1]						
	Trustee Area 1	Trustee Area 2	Trustee Area 3	Trustee Area 4	Trustee Area 5	
Total Owners	61.13%	62.82%	36.51%	81.54%	68.67%	
Total Renters	38.87%	37.18%	63.49%	18.46%	31.33%	
Total	100.00%	100.00%	100.00%	100.00%	100.00%	

ACS Profile Income by Household (2017 Estimates) ^[1]						
	Trustee Area 1	Trustee Area 2	Trustee Area 3	Trustee Area 4	Trustee Area 5	
Income \$0-25k	18.09%	11.48%	19.21%	7.72%	11.19%	
Income \$25-50k	19.25%	11.17%	24.06%	10.14%	14.60%	
Income \$50-100k	31.16%	24.58%	32.14%	23.10%	31.19%	
Income \$100-150k	16.30%	22.49%	16.05%	18.41%	24.99%	
Income \$150k+	15.19%	30.28%	8.56%	40.63%	18.04%	
Total	100.00%	100.00%	100.00%	100.00%	100.00%	

[1] Based off estimates prepared by the Census Bureau

School Boundaries						
	Trustee Area 1	Trustee Area 2	Trustee Area 3	Trustee Area 4	Trustee Area 5	
School Boundaries	Ayers ES	Fair Oaks ES	Bancroft ES	Ayers ES	Ayers ES	
	Bel Air ES	Gregory Gardens ES	Cambridge ES	Bancroft ES	El Monte ES	
	Delta View ES	Hidden Valley ES	El Monte ES	Highlands ES	Highlands ES	
	Halbrook ES	Pleasant Hill ES	Fair Oaks ES	Mt. Diablo ES	Monte Gardens ES	
	Hidden Valley ES	Strandwood ES	Gregory Gardens ES	Valle Verde ES	Mountain View ES	
	Monte Gardens ES	Valhalla ES	Hidden Valley ES	Walnut Acres ES	Silverwood ES	
	Mountain View ES	Pleasant Hill MS	Holbrook ES	Woodside ES	Westwood ES	
	Rio Vista ES	Valley View MS	Meadow Homes ES	Foothill MS	Woodside ES	
	Shores Acres ES	College Park HS	Sun Terrace ES	Oak Grove MS	Wren Avenue ES	
	Sun Terrace ES	Ygnacio Valley HS	Woodside ES	Pine Hollow MS	El Dorado MS	
	West Wood ES		Wren Avenue ES	Choice HS	Foothill MS	
	Wren Avenue ES		Ygnacio Valley ES	Northgate HS	Oak Grove MS	
	El Dorado MS		El Dorado MS	Ygnacio Valley HS	Pine Hollow MS	
	Pine Hollow MS		Oak Grove MS		Choice HS	
	Riverview MS		Pleasant Hill MS		Concord HS	
	Valley View MS		Valley View MS		Mt.Diablo HS	
	Choice HS		College Park HS		Northgate HS	
	College Park HS		Mt. Diablo HS		Ygnacio Valley HS	
	Concord HS		Ygnacio Valley HS			
	Mt. Diablo HS					