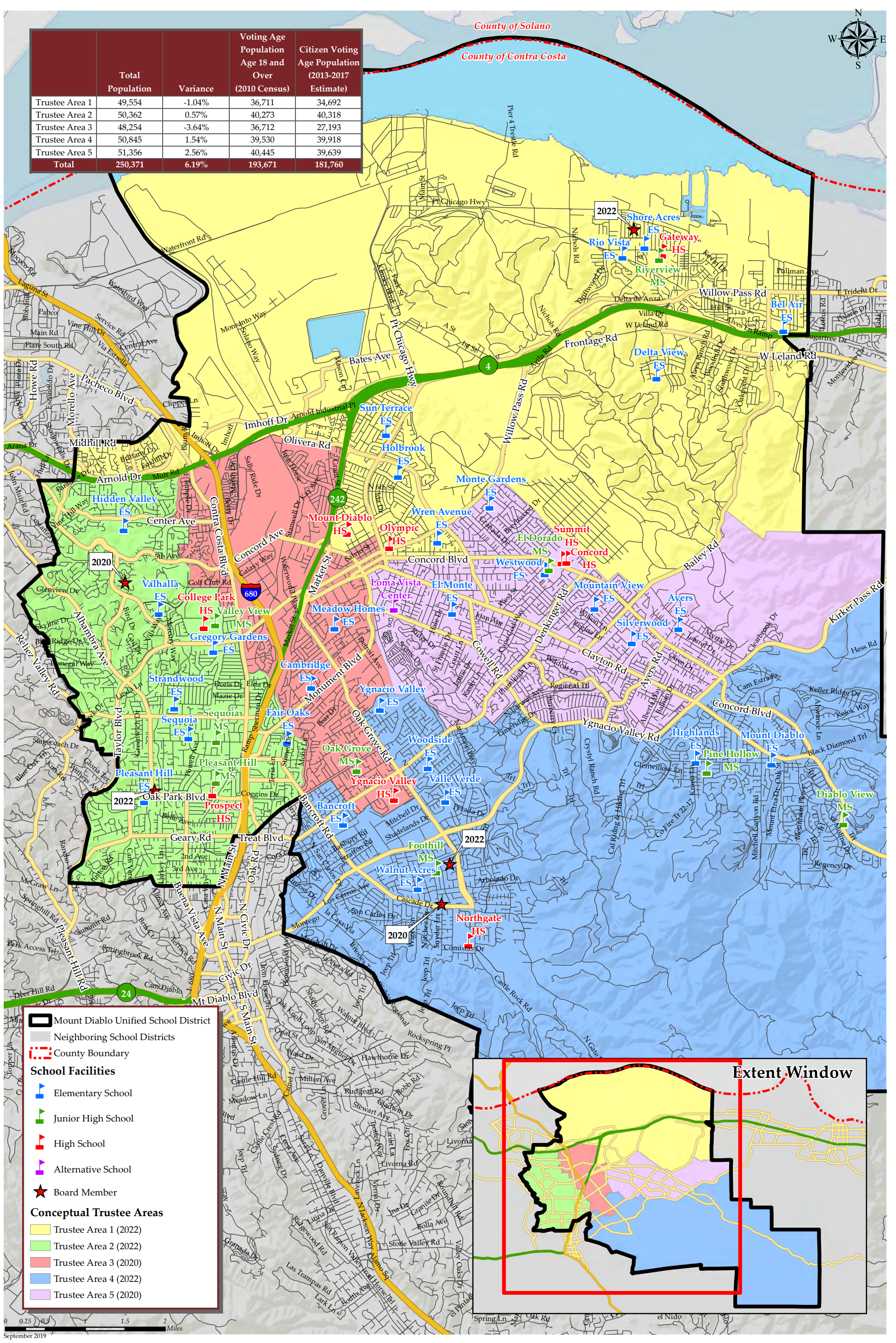


MT DIABLO UNIFIED SCHOOL DISTRICT CONCEPTUAL TRUSTEE AREAS - SCENARIO PURPLE A

	Total Population	Variance	Voting Age Population Age 18 and Over (2010 Census)	Citizen Voting Age Population (2013-2017 Estimate)
Trustee Area 1	49,554	-1.04%	36,711	34,692
Trustee Area 2	50,362	0.57%	40,273	40,318
Trustee Area 3	48,254	-3.64%	36,712	27,193
Trustee Area 4	50,845	1.54%	39,530	39,918
Trustee Area 5	51,356	2.56%	40,445	39,639
Total	250,371	6.19%	193,671	181,760



September 2019

MT DIABLO UNIFIED SCHOOL DISTRICT
CONCEPTUAL TRUSTEE AREAS - SCENARIO PURPLE A

Total Population (2010 Census)						
	Trustee Area 1	Trustee Area 2	Trustee Area 3	Trustee Area 4	Trustee Area 5	Variance
Population	49,554	50,362	48,254	50,845	51,356	
Population Variance	-520	288	-1,820	771	1,282	
	-1.04%	0.57%	-3.64%	1.54%	2.56%	6.19%
Hispanic/Latino	18,739	6,053	21,562	4,779	10,157	
	37.82%	12.02%	44.68%	9.40%	19.78%	
White	17,367	35,529	16,939	36,539	31,086	
	35.05%	70.55%	35.10%	71.86%	60.53%	
Black/ African American	3,901	997	2,048	739	1,332	
	7.87%	1.98%	4.24%	1.45%	2.59%	
American Indian/ Alaska Native	178	118	138	116	159	
	0.36%	0.23%	0.29%	0.23%	0.31%	
Asian	7,078	5,452	5,589	6,501	6,092	
	14.28%	10.83%	11.58%	12.79%	11.86%	
Native Hawaiian/ Other Pacific Islander	365	80	353	101	215	
	0.74%	0.16%	0.73%	0.20%	0.42%	
Other	133	91	108	136	137	
	0.27%	0.18%	0.22%	0.27%	0.27%	
Two or More Races	1,793	2,042	1,517	1,934	2,178	
	3.62%	4.05%	3.14%	3.80%	4.24%	

Population 18 and Over (2010 Census)						
	Trustee Area 1	Trustee Area 2	Trustee Area 3	Trustee Area 4	Trustee Area 5	
Population	36,711	40,273	36,712	39,530	40,445	
Population Variance	-2,023	1,539	-2,022	796	1,711	
	-5.22%	3.97%	-5.22%	2.05%	4.42%	
Hispanic/Latino	12,082	4,211	14,297	3,244	6,886	
	32.91%	10.46%	38.94%	8.21%	17.03%	
White	14,656	29,395	14,691	29,354	25,908	
	39.92%	72.99%	40.02%	74.26%	64.06%	
Black/ African American	2,794	741	1,565	596	1,026	
	7.61%	1.84%	4.26%	1.51%	2.54%	
American Indian/ Alaska Native	153	105	113	83	130	
	0.42%	0.26%	0.31%	0.21%	0.32%	
Asian	5,636	4,604	4,771	5,161	4,997	
	15.35%	11.43%	13.00%	13.06%	12.36%	
Native Hawaiian/ Other Pacific Islander	256	64	245	83	162	
	0.70%	0.16%	0.67%	0.21%	0.40%	
Other	94	64	73	81	93	
	0.26%	0.16%	0.20%	0.20%	0.23%	
Two or More Races	1,040	1,089	957	928	1,243	
	2.83%	2.70%	2.61%	2.35%	3.07%	

Citizens by Voting Age Population Estimate (2013-2017)						
	Trustee Area 1	Trustee Area 2	Trustee Area 3	Trustee Area 4	Trustee Area 5	
Population	34,692	40,318	27,193	39,918	39,639	
Population Variance	-1,660	3,966	-9,159	3,566	3,287	
	-4.57%	10.91%	-25.20%	9.81%	9.04%	
Hispanic/Latino	9,039	3,994	6,777	3,716	6,243	
	26.05%	9.91%	24.92%	9.31%	15.75%	
White	14,960	29,608	13,569	29,618	25,951	
	43.12%	73.44%	49.90%	74.20%	65.47%	
Black/ African American	3,214	1,076	1,797	531	1,642	
	9.26%	2.67%	6.61%	1.33%	4.14%	
American Indian/ Alaska Native	153	70	58	95	88	
	0.44%	0.17%	0.21%	0.24%	0.22%	
Asian	5,815	3,770	3,695	4,717	4,242	
	16.76%	9.35%	13.59%	11.82%	10.70%	
Native Hawaiian/ Other Pacific Islander	255	194	87	70	120	
	0.74%	0.48%	0.32%	0.18%	0.30%	
Other	0	0	0	0	0	
	0.00%	0.00%	0.00%	0.00%	0.00%	
Two or More Races	1,256	1,606	1,210	1,171	1,353	
	3.62%	3.98%	4.45%	2.93%	3.41%	

ACS Age Groups (2017 Estimates) ^[1]						
	Trustee Area 1	Trustee Area 2	Trustee Area 3	Trustee Area 4	Trustee Area 5	
Under 18 Years Old	24.53%	19.16%	22.88%	21.49%	19.90%	
18-24 Years Old	10.06%	6.58%	9.71%	6.13%	7.67%	
25-34 Years Old	14.82%	14.21%	19.97%	9.81%	14.66%	
35-54 Years Old	28.01%	28.09%	26.72%	27.31%	26.77%	
55-64 Years Old	12.60%	14.74%	10.96%	15.13%	14.32%	
Over 64 Years Old	9.98%	17.20%	9.76%	20.13%	16.68%	
Total	100.00%	100.00%	100.00%	100.00%	100.00%	

ACS Renters vs Owners (2017 Estimates) ^[1]						
	Trustee Area 1	Trustee Area 2	Trustee Area 3	Trustee Area 4	Trustee Area 5	
Total Owners	61.13%	62.82%	36.51%	81.54%	68.67%	
Total Renters	38.87%	37.18%	63.49%	18.46%	31.33%	
Total	100.00%	100.00%	100.00%	100.00%	100.00%	

ACS Profile Income by Household (2017 Estimates) ^[1]						
	Trustee Area 1	Trustee Area 2	Trustee Area 3	Trustee Area 4	Trustee Area 5	
Income \$0-25k	18.09%	11.48%	19.21%	7.72%	11.19%	
Income \$25-50k	19.25%	11.17%	24.06%	10.14%	14.60%	
Income \$50-100k	31.16%	24.58%	32.14%	23.10%	31.19%	
Income \$100-150k	16.30%	22.49%	16.05%	18.41%	24.99%	
Income \$150k+	15.19%	30.28%	8.56%	40.63%	18.04%	
Total	100.00%	100.00%	100.00%	100.00%	100.00%	

[1] Based off estimates prepared by the Census Bureau